

Converting Colors

CIELCh(77, 18.901, 40.746)

Have a look what the booklet for
CIELCh(77, 18.901, 40.746) contains.

CIELCh(77, 19.027, 40.269)	3
<i>Conversions</i>	4
<i>Details</i>	6
<i>Harmonies</i>	11
<i>Previews</i>	20
<i>Color Blindness Simulation</i>	23
<i>CSS Examples</i>	26

Color

CIELCh(77, 19.027, 40.269)

Conversions

Conversions Part 1

Format	Color
Hex	E1B4A8
RGB	225, 180, 168
RGB Percent	88%, 71%, 66%
CMY	0.1173, 0.2937, 0.3408
CMYK	0.00, 0.20, 0.25, 0.12
HSL	13°, 49%, 77%
HSV	13°, 25%, 88%
XYZ	54.4961, 51.5317, 44.1633
YIQ	192.0870, 30.6720, 5.8080

Conversions

Conversions Part 2

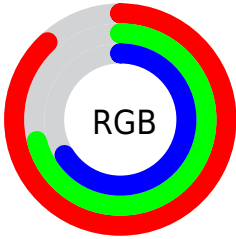
Format	Color
RYB	225, 183, 168
Decimal	14791848
CIELab	77.00, 14.52, 12.30
CIElCh	77, 19.027, 40.269
Yxy	51.5317, 0.3628, 0.3431
Android (android.graphics.Color)	4292981928 (0xFFE1B4A8)
YUV	192.0870, -11.8749, 28.8647
Hunter-Lab	71.7856, 9.8835, 13.7740

Details

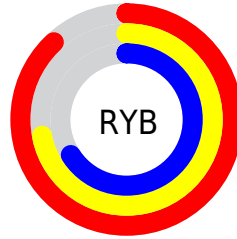
The CIELCh color **77, 19.027, 40.269** is a light color, and the websafe version is hex **CC9999**. A complement of this color would be **83, 16.043, 221.938**, and the grayscale version is **78, 0.009, 296.813**.

A 20% lighter version of the original color is **95, 9.636, 63.288**, and **57, 19.124, 39.989** is the 20% darker color. If you saturate the color by 10%, you get **72, 27.673, 40.350**, and if you desaturate by 10%, it is **82, 11.044, 40.335**.

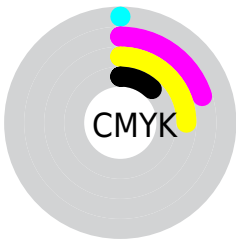
Distribution



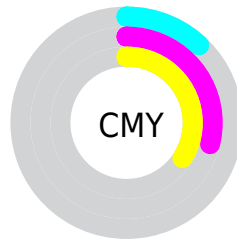
- Red (88%)
- Green (71%)
- Blue (66%)



- Red (88%)
- Yellow (72%)
- Blue (66%)



- Cyan (0%)
- Magenta (20%)
- Yellow (25%)
- Black (12%)



- Cyan (12%)
- Magenta (29%)
- Yellow (34%)

Brightness & Saturation Gradients

These gradients show how the CIELCh color 77, 19.027, 40.269 changes by changing the brightness by 10 percent. The first figure shows a shift by +10% for each color and the second figure -10%.

Similar to the brightness gradients but the following saturation gradients show a change of the CIELCh color 77, 19.027, 40.269 by changing the saturation by 10% instead.

77, 19.027, 40.269

77, 19.027, 40.269

100, 19.027,
40.269

67, 19.027, 40.269

97, 19.027, 40.269

57, 19.027, 40.269

47, 19.027, 40.269

37, 19.027, 40.269

27, 19.027, 40.269

17, 19.027, 40.269

7, 19.027, 40.269

0, 19.027, 40.269

77, 19.027, 40.269

77, 19.027, 40.269

72, 27.673, 40.350

82, 11.044, 40.335

68, 37.003, 40.600

87, 3.683, 40.420

63, 46.985, 41.060

92, 3.113, 221.044

59, 57.501, 41.742

97, 9.011, 211.524

56, 68.259, 42.590

98, 10.141,
198.830

53, 78.593, 43.382

51, 87.070, 43.548

50, 90.289, 43.517

Harmonies

Complementary

The Complementary color scheme is a pair of colors which are on the opposite of each other on the color wheel.



77, 19.027, 40.269



83, 16.043, 221.938

Rectangle

The Rectangle color scheme consists of four colors that form a rectangle on the color wheel.



77, 19.027, 40.269



77, 19.027, 90.269



77, 19.027, 220.269



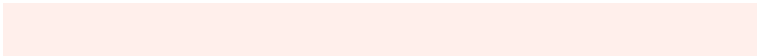
77, 19.027, 270.269

Sweetspot

The Sweet Spot groups the original color and five complimentary colors.



77, 19.026, 40.277



96, 6.191, 40.414



75, 31.914, 332.143



50, 4.427, 40.400



0, 0.000, 0.000



53, 0.007, 296.813

Same Dimension

The Same Dimension uses a secret algorithm to generate beautiful new colors.



77, 19.026, 40.277



84, 25.453, 40.293



84, 21.995, 90.507



44, 3.984, 40.401



39, 74.696, 43.929



8, 22.191, 32.887

Inverse Universe

The Inverse Universe completely reimagines the original color for something new.



83, 16.043, 221.938



91, 20.669, 222.306



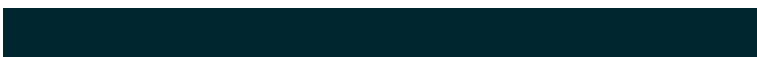
75, 22.087, 277.410



46, 3.758, 221.126



54, 33.445, 237.711



13, 13.554, 230.257

Previews

White Background



This preview shows how the CIELCh color 77, 19.027, 40.269 looks on a white background.

Color Contrast Check

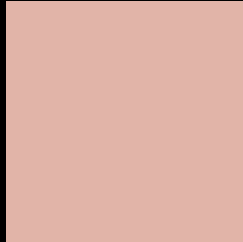
Large Text (above 18pt) WCAG AA × Fail

Any Text WCAG AA × Fail

Large Text (above 18pt) WCAG AAA × Fail

Any Text WCAG AAA × Fail

Black Background



This preview shows how the CIELCh color 77, 19.027, 40.269 looks on a black background.

Color Contrast Check

Large Text (above 18pt) WCAG AA ✓ Pass

Any Text WCAG AA ✓ Pass

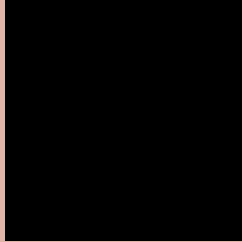
Large Text (above 18pt) WCAG AAA ✓ Pass

Any Text WCAG AAA ✓ Pass

If you want to check with other color combinations, try the [Color Contrast Checker](#).

CIELCh 77, 19.027, 40.269

Background



This preview shows how black text looks on a background with the CIELCh color 77, 19.027, 40.269.



This preview shows how white text looks on a background with the CIELCh color 77, 19.027, 40.269.

Color Blindness Simulation

Color vision deficiency is a very complex topic, and I could not describe the different causes any better than Wikipedia does, so if you want to learn more, you should check out their [article about color blindness](#).

Dichromacy



Original Color

77, 19.027, 40.269

Protanopia

77, 9.580, 90.597

Deuteranopia

77, 16.000, 52.390



Tritanopia
77, 20.498, 1.503

Trichromacy



Original Color
77, 19.027, 40.269

Protanomaly
77, 11.760, 62.686

Deuteranomaly
77, 17.129, 48.152

Tritanomaly
77, 18.978, 14.604

Monochromacy



Original Color
77, 19.027, 40.269

Achromatopsia
78, 0.009, 296.813

Achromatomaly
77, 6.619, 43.525

CSS Examples

Text

The CSS property to change the color of the text to CIELCh 77, 19.027, 40.269 is called "color". The color property can be set on classes, ids or directly on the HTML element.

This example shows how text in the color `rgb(225, 180, 168)` looks like.

```
.text, #text, p{  
    color:rgb(225, 180, 168)  
}
```

If you want to add a text shadow in that color use the text-shadow property, you can generate a text shadow directly with our [CSS Text Shadow Generator](#).

Here you see how black text with a 4 pixel rgb(225, 180, 168) colored shadow looks like.

```
.shadow{ text-shadow: 4px 4px 2px rgb(225, 180, 168) }
```

Border

The CSS property to change the border of an element to CIELCh 77, 19.027, 40.269 is called "border". The border property can be set on classes, ids or directly on the HTML element.

This example shows the color as border, it can be applied via the CSS property "border" or "border-color".

```
.border, #border, table{ border:4px solid rgb(225, 180, 168) }
```

If only the border color should be changed use the property `border-color`.

```
.border{ border-color:rgb(225, 180, 168) }
```

If you want to add a box shadow in that color use:

Here you see how a box with a 4 pixel `rgb(225, 180, 168)` colored shadow looks like.

```
.boxshadow{ -moz-box-shadow:4px 4px 4px  
4px rgb(225, 180, 168); -webkit-box-  
shadow:4px 4px 4px 4px rgb(225, 180, 168);  
box-shadow:4px 4px 4px 4px rgb(225, 180,  
168) }
```

Background

The CSS property to change the background color of an element to CIELCh 77, 19.027, 40.269 is called "background". The background property can be set on classes, ids or directly on the HTML element.

```
.background, #background, body{  
background: rgb(225, 180, 168) }
```

If only the background color should be changed can be used:

```
.background{ background-color: rgb(225,  
180, 168) }
```

This example shows the color as background, it is applied via the CSS property "background".

To optimize and compress your CSS code, you can use our [online CSS compressor and optimizer](#) based on csstidy. If you want to create a linear or radial gradient as background or border, check our [CSS Gradient Generator](#).

Hey! You found this booklet interesting? Support Converting Colors with the new Membership Option!

The pro membership hides all ads, plus gives you double the colors in the color bucket, and more awesome pro features!

[Learn more, Memberships starting at \\$2.50/m!](#)

**Follow me
on Twitter!**

@ConvertingColor