

Converting Colors

CIELCh(77, 19.466, 3.594)

Have a look what the booklet for
CIELCh(77, 19.466, 3.594) contains.

CIELCh(77, 19.110, 3.247)	3
<i>Conversions</i>	4
<i>Details</i>	6
<i>Harmonies</i>	11
<i>Previews</i>	20
<i>Color Blindness Simulation</i>	23
<i>CSS Examples</i>	26

Color

CIELCh(77, 19.110, 3.247)

Conversions

Conversions Part 1

Format	Color
Hex	E2B2BD
RGB	226, 178, 189
RGB Percent	89%, 70%, 74%
CMY	0.1147, 0.3029, 0.2598
CMYK	0.00, 0.21, 0.16, 0.11
HSL	346°, 45%, 79%
HSV	346°, 21%, 89%
XYZ	56.3112, 51.5317, 54.9807
YIQ	193.6060, 25.0770, 13.5970

Conversions

Conversions Part 2

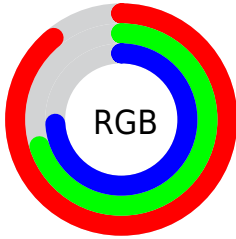
Format	Color
R _Y B	226, 178, 189
Decimal	14856893
CIE _{Lab}	77.00, 19.08, 1.08
CIE _{LCh}	77, 19.110, 3.247
Yxy	51.5317, 0.3458, 0.3165
Android (android.graphics.Color)	4293046973 (0xFFE2B2BD)
YUV	193.6060, -2.2708, 28.4095
Hunter-Lab	71.7856, 14.3968, 4.8397

Details

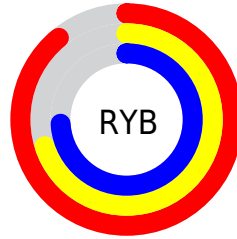
The CIELCh color **77, 19.110, 3.247** is a light color, and the websafe version is hex **FFCCCC**. A complement of this color would be **86, 17.658, 179.089**, and the grayscale version is **78, 0.009, 296.813**.

A 20% lighter version of the original color is **95, 9.381, 343.016**, and **57, 19.173, 2.737** is the 20% darker color. If you saturate the color by 10%, you get **71, 28.671, 4.618**, and if you desaturate by 10%, it is **83, 9.884, 2.087**.

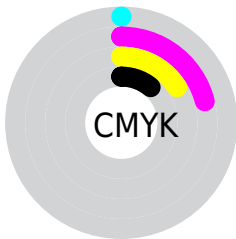
Distribution



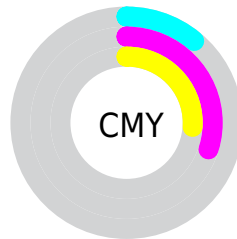
- Red (89%)
- Green (70%)
- Blue (74%)



- Red (89%)
- Yellow (70%)
- Blue (74%)



- Cyan (0%)
- Magenta (21%)
- Yellow (16%)
- Black (11%)



- Cyan (11%)
- Magenta (30%)
- Yellow (26%)

Brightness & Saturation Gradients

These gradients show how the CIELCh color 77, 19.110, 3.247 changes by changing the brightness by 10 percent. The first figure shows a shift by +10% for each color and the second figure -10%.

Similar to the brightness gradients but the following saturation gradients show a change of the CIELCh color 77, 19.110, 3.247 by changing the saturation by 10% instead.

 77, 19.110, 3.247  77, 19.110, 3.247

 100, 19.110, 3.247  67, 19.110, 3.247

 97, 19.110, 3.247  57, 19.110, 3.247

 47, 19.110, 3.247

 37, 19.110, 3.247

 27, 19.110, 3.247

 17, 19.110, 3.247

 7, 19.110, 3.247

 0, 19.110, 3.247

 77, 19.110, 3.247  77, 19.110, 3.247

71, 28.671, 4.618

83, 9.884, 2.087

66, 38.420, 6.272

89, 1.079, 0.662

61, 48.097, 8.320

95, 7.281, 180.403

56, 57.350, 10.898

98, 9.929, 198.845

53, 65.776, 14.166

50, 73.049, 18.272

48, 79.094, 23.244

47, 83.714, 27.981

Harmonies

Complementary

The Complementary color scheme is a pair of colors which are on the opposite of each other on the color wheel.



77, 19.110, 3.247



86, 17.658, 179.089

Rectangle

The Rectangle color scheme consists of four colors that form a rectangle on the color wheel.



77, 19.110, 3.247



77, 19.110, 53.247



77, 19.110, 183.247



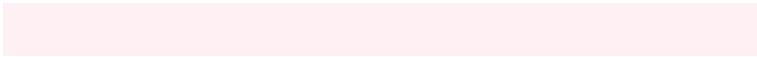
77, 19.110, 233.247

Sweetspot

The Sweet Spot groups the original color and five complimentary colors.



77, 19.108, 3.252



96, 5.743, 1.513



77, 28.909, 318.727



51, 3.815, 1.587



0, 0.000, 0.000



53, 0.007, 296.813

Same Dimension

The Same Dimension uses a secret algorithm to generate beautiful new colors.



77, 19.108, 3.252



83, 26.073, 3.893



80, 15.342, 46.430



44, 4.940, 1.889



37, 68.940, 26.967



6, 25.285, 11.205

Inverse Universe

The Inverse Universe completely reimagines the original color for something new.



77, 19.108, 3.252



83, 26.073, 3.893



83, 13.457, 229.018



44, 4.940, 1.889



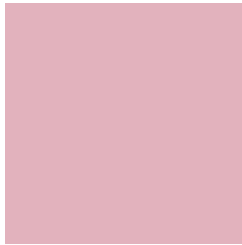
37, 68.940, 26.967



6, 25.285, 11.205

Previews

White Background



This preview shows how the CIELCh color 77, 19.110, 3.247 looks on a white background.

Color Contrast Check

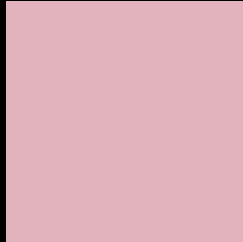
Large Text (above 18pt) WCAG AA × Fail

Any Text WCAG AA × Fail

Large Text (above 18pt) WCAG AAA × Fail

Any Text WCAG AAA × Fail

Black Background



This preview shows how the CIE LCh color 77, 19.110, 3.247 looks on a black background.

Color Contrast Check

Large Text (above 18pt) WCAG AA ✓ Pass

Any Text WCAG AA ✓ Pass

Large Text (above 18pt) WCAG AAA ✓ Pass

Any Text WCAG AAA ✓ Pass

If you want to check with other color combinations, try the [Color Contrast Checker](#).

CIELCh 77, 19.110, 3.247

Background



This preview shows how black text looks on a background with the CIELCh color 77, 19.110, 3.247.



This preview shows how white text looks on a background with the CIELCh color 77, 19.110, 3.247.

Color Blindness Simulation

Color vision deficiency is a very complex topic, and I could not describe the different causes any better than Wikipedia does, so if you want to learn more, you should check out their [article about color blindness](#).

Dichromacy



Original Color

77, 19.110, 3.247

Protanopia

77, 3.425, 309.167

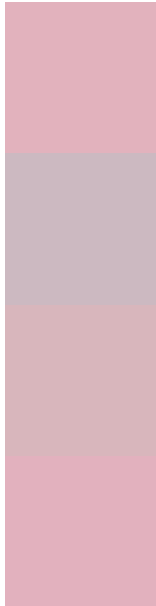
Deuteranopia

77, 10.037, 7.924



Tritanopia
77, 19.934, 359.203

Trichromacy



Original Color
77, 19.110, 3.247

Protanomaly
77, 8.287, 348.914

Deuteranomaly
77, 13.258, 6.552

Tritanomaly
77, 19.775, 0.662

Monochromacy



Original Color
77, 19.110, 3.247

Achromatopsia
78, 0.009, 296.813

Achromatomaly
77, 7.067, 2.324

CSS Examples

Text

The CSS property to change the color of the text to CIELCh 77, 19.110, 3.247 is called "color". The color property can be set on classes, ids or directly on the HTML element.

This example shows how text in the color `rgb(226, 178, 189)` looks like.

```
.text, #text, p{  
    color:rgb(226, 178, 189)  
}
```

If you want to add a text shadow in that color use the text-shadow property, you can generate a text shadow directly with our [CSS Text Shadow Generator](#).

Here you see how black text with a 4 pixel rgb(226, 178, 189) colored shadow looks like.

```
.shadow{ text-shadow: 4px 4px 2px rgb(226, 178, 189) }
```

Border

The CSS property to change the border of an element to CIELCh 77, 19.110, 3.247 is called "border". The border property can be set on classes, ids or directly on the HTML element.

This example shows the color as border, it can be applied via the CSS property "border" or "border-color".

```
.border, #border, table{ border:4px solid rgb(226, 178, 189) }
```

If only the border color should be changed use the property `border-color`.

```
.border{ border-color:rgb(226, 178, 189) }
```

If you want to add a box shadow in that color use:

Here you see how a box with a 4 pixel `rgb(226, 178, 189)` colored shadow looks like.

```
.boxshadow{ -moz-box-shadow:4px 4px 4px  
4px rgb(226, 178, 189); -webkit-box-  
shadow:4px 4px 4px 4px rgb(226, 178, 189);  
box-shadow:4px 4px 4px 4px rgb(226, 178,  
189) }
```

Background

The CSS property to change the background color of an element to CIELCh 77, 19.110, 3.247 is called "background". The background property can be set on classes, ids or directly on the HTML element.

```
.background, #background, body{  
background: rgb(226, 178, 189) }
```

If only the background color should be changed can be used:

```
.background{ background-color: rgb(226,  
178, 189) }
```

This example shows the color as background, it is applied via the CSS property "background".

To optimize and compress your CSS code, you can use our [online CSS compressor and optimizer](#) based on csstidy. If you want to create a linear or radial gradient as background or border, check our [CSS Gradient Generator](#).

Hey! You found this booklet interesting? Support Converting Colors with the new Membership Option!

The pro membership hides all ads, plus gives you double the colors in the color bucket, and more awesome pro features!

[Learn more, Memberships starting at \\$2.50/m!](#)

**Follow me
on Twitter!**

@ConvertingColor