

Converting Colors

CIELCh(77, 21.320, 22.623)

Have a look what the booklet for
CIELCh(77, 21.320, 22.623) contains.

CIELCh(77, 21.111, 22.607)	3
<i>Conversions</i>	4
<i>Details</i>	6
<i>Harmonies</i>	11
<i>Previews</i>	20
<i>Color Blindness Simulation</i>	23
<i>CSS Examples</i>	26

Color

CIELCh(77, 21.111, 22.607)

Conversions

Conversions Part 1

Format	Color
Hex	E7B1B0
RGB	231, 177, 176
RGB Percent	91%, 69%, 69%
CMY	0.0944, 0.3061, 0.3100
CMYK	0.00, 0.23, 0.24, 0.09
HSL	1°, 53%, 80%
HSV	1°, 24%, 91%
XYZ	56.4761, 51.5317, 48.0139
YIQ	193.0320, 32.5050, 11.1370

Conversions

Conversions Part 2

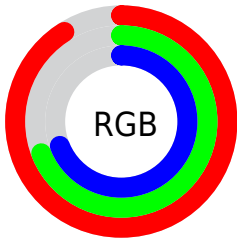
Format	Color
R _Y B	231, 177, 176
Decimal	15184304
CIE Lab	77.00, 19.49, 8.12
CIE LCh	77, 21.111, 22.607
Yxy	51.5317, 0.3620, 0.3303
Android (android.graphics.Color)	4293374384 (0xFFE7B1B0)
YUV	193.0320, -8.3968, 33.2979
Hunter-Lab	71.7856, 14.8069, 10.5937

Details

The CIELCh color **77, 21.111, 22.607** is a light color, and the websafe version is hex **CC9999**. A complement of this color would be **88, 17.964, 199.913**, and the grayscale version is **78, 0.009, 296.813**.

A 20% lighter version of the original color is **94, 7.972, 23.550**, and **57, 20.937, 21.712** is the 20% darker color. If you saturate the color by 10%, you get **71, 31.143, 23.728**, and if you desaturate by 10%, it is **83, 11.767, 21.751**.

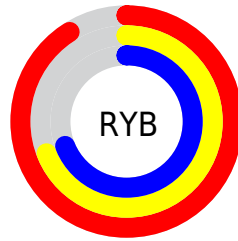
Distribution



Red (91%)

Green (69%)

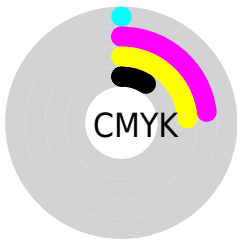
Blue (69%)



Red (91%)

Yellow (69%)

Blue (69%)

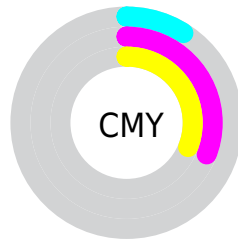


Cyan (0%)

Magenta (23%)

Yellow (24%)

Black (9%)



Cyan (9%)

Magenta (31%)

Yellow (31%)

Brightness & Saturation Gradients

These gradients show how the CIELCh color 77, 21.111, 22.607 changes by changing the brightness by 10 percent. The first figure shows a shift by +10% for each color and the second figure -10%.

Similar to the brightness gradients but the following saturation gradients show a change of the CIELCh color 77, 21.111, 22.607 by changing the saturation by 10% instead.

77, 21.111, 22.607

77, 21.111, 22.607

100, 21.111,
22.607

67, 21.111, 22.607

97, 21.111, 22.607

57, 21.111, 22.607

47, 21.111, 22.607

37, 21.111, 22.607

27, 21.111, 22.607

17, 21.111, 22.607

7, 21.111, 22.607

0, 21.111, 22.607

77, 21.111, 22.607

77, 21.111, 22.607

71, 31.143, 23.728

83, 11.767, 21.751

66, 41.799, 25.191

89, 3.122, 20.966

61, 52.916, 27.104

96, 4.863, 200.799

56, 64.222, 29.562

98, 8.209, 198.967

53, 75.316, 32.582

50, 85.544, 35.932

49, 93.506, 38.827

48, 96.793, 40.145

Harmonies

Complementary

The Complementary color scheme is a pair of colors which are on the opposite of each other on the color wheel.



77, 21.111, 22.607



88, 17.964, 199.913

Rectangle

The Rectangle color scheme consists of four colors that form a rectangle on the color wheel.



77, 21.111, 22.607



77, 21.111, 72.607



77, 21.111, 202.607



77, 21.111, 252.607

Sweetspot

The Sweet Spot groups the original color and five complimentary colors.



77, 21.109, 22.613



95, 6.289, 21.246



78, 34.753, 326.197



50, 4.096, 21.291



0, 0.000, 0.000



53, 0.007, 296.813

Same Dimension

The Same Dimension uses a secret algorithm to generate beautiful new colors.



77, 21.109, 22.613



81, 28.441, 23.172



84, 18.262, 74.184



45, 4.730, 21.425



37, 79.731, 40.178



7, 26.754, 22.675

Inverse Universe

The Inverse Universe completely reimagines the original color for something new.



88, 17.964, 199.913



95, 23.241, 199.708



80, 17.238, 260.797



47, 4.453, 200.578



65, 37.374, 199.262



18, 15.744, 198.808

Previews

White Background



This preview shows how the CIELCh color 77, 21.111, 22.607 looks on a white background.

Color Contrast Check

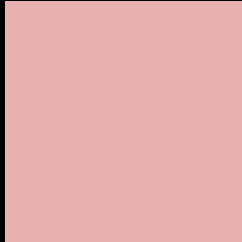
Large Text (above 18pt) WCAG AA × Fail

Any Text WCAG AA × Fail

Large Text (above 18pt) WCAG AAA × Fail

Any Text WCAG AAA × Fail

Black Background



This preview shows how the CIELCh color 77, 21.111, 22.607 looks on a black background.

Color Contrast Check

Large Text (above 18pt) WCAG AA ✓ Pass

Any Text WCAG AA ✓ Pass

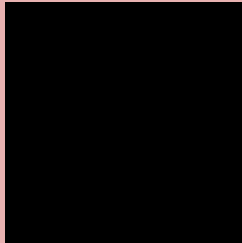
Large Text (above 18pt) WCAG AAA ✓ Pass

Any Text WCAG AAA ✓ Pass

If you want to check with other color combinations, try the [Color Contrast Checker](#).

CIELCh 77, 21.111, 22.607

Background



This preview shows how black text looks on a background with the CIELCh color 77, 21.111, 22.607.

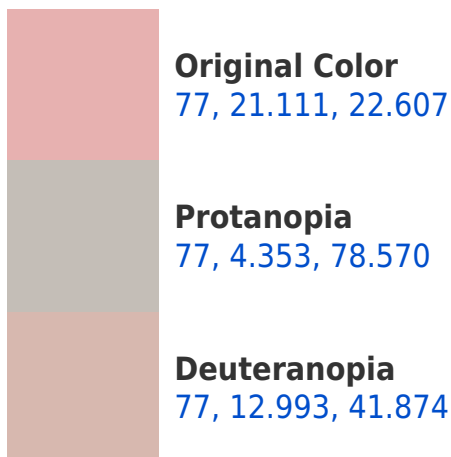


This preview shows how white text looks on a background with the CIELCh color 77, 21.111, 22.607.

Color Blindness Simulation

Color vision deficiency is a very complex topic, and I could not describe the different causes any better than Wikipedia does, so if you want to learn more, you should check out their [article about color blindness](#).

Dichromacy





Tritanopia
77, 22.739, 3.762

Trichromacy



Original Color
77, 21.111, 22.607

Protanomaly
77, 9.573, 36.219

Deuteranomaly
77, 15.946, 32.139

Tritanomaly
77, 21.898, 10.159

Monochromacy



Original Color
77, 21.111, 22.607

Achromatopsia
78, 0.009, 296.813

Achromatomaly
78, 7.540, 19.947

CSS Examples

Text

The CSS property to change the color of the text to CIELCh 77, 21.111, 22.607 is called "color". The color property can be set on classes, ids or directly on the HTML element.

This example shows how text in the color `rgb(231, 177, 176)` looks like.

```
.text, #text, p{  
    color:rgb(231, 177, 176)  
}
```

If you want to add a text shadow in that color use the text-shadow property, you can generate a text shadow directly with our [CSS Text Shadow Generator](#).

Here you see how black text with a 4 pixel rgb(231, 177, 176) colored shadow looks like.

```
.shadow{ text-shadow: 4px 4px 2px rgb(231, 177, 176) }
```

Border

The CSS property to change the border of an element to CIELCh 77, 21.111, 22.607 is called "border". The border property can be set on classes, ids or directly on the HTML element.

This example shows the color as border, it can be applied via the CSS property "border" or "border-color".

```
.border, #border, table{ border:4px solid rgb(231, 177, 176) }
```

If only the border color should be changed use the property border-color.

```
.border{ border-color:rgb(231, 177, 176) }
```

If you want to add a box shadow in that color use:

Here you see how a box with a 4 pixel rgb(231, 177, 176) colored shadow looks like.

```
.boxshadow{ -moz-box-shadow:4px 4px 4px  
4px rgb(231, 177, 176); -webkit-box-  
shadow:4px 4px 4px 4px rgb(231, 177, 176);  
box-shadow:4px 4px 4px 4px rgb(231, 177,  
176) }
```

Background

The CSS property to change the background color of an element to CIELCh 77, 21.111, 22.607 is called "background". The background property can be set on classes, ids or directly on the HTML element.

```
.background, #background, body{  
background: rgb(231, 177, 176) }
```

If only the background color should be changed can be used:

```
.background{ background-color: rgb(231,  
177, 176) }
```

This example shows the color as background, it is applied via the CSS property "background".

To optimize and compress your CSS code, you can use our [online CSS compressor and optimizer](#) based on csstidy. If you want to create a linear or radial gradient as background or border, check our [CSS Gradient Generator](#).

Hey! You found this booklet interesting? Support Converting Colors with the new Membership Option!

The pro membership hides all ads, plus gives you double the colors in the color bucket, and more awesome pro features!

[Learn more, Memberships starting at \\$2.50/m!](#)

**Follow me
on Twitter!**

@ConvertingColor