

Converting Colors

CIELCh(77, 24.096, 9.981)

Have a look what the booklet for
CIELCh(77, 24.096, 9.981) contains.

CIELCh(77, 24.316, 10.267)	3
<i>Conversions</i>	4
<i>Details</i>	6
<i>Harmonies</i>	11
<i>Previews</i>	20
<i>Color Blindness Simulation</i>	23
<i>CSS Examples</i>	26

Color

CIELCh(77, 24.316, 10.267)

Conversions

Conversions Part 1

Format	Color
Hex	ECAEB7
RGB	236, 174, 183
RGB Percent	93%, 68%, 72%
CMY	0.0745, 0.3176, 0.2823
CMYK	0.00, 0.26, 0.22, 0.07
HSL	351°, 62%, 80%
HSV	351°, 26%, 93%
XYZ	58.2837, 51.5317, 51.6814
YIQ	193.5640, 34.0630, 15.9430

Conversions

Conversions Part 2

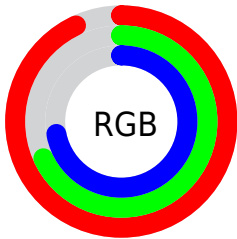
Format	Color
R _Y B	236, 174, 183
Decimal	15511223
CIE Lab	77.00, 23.93, 4.33
CIE LCh	77, 24.316, 10.267
Yxy	51.5317, 0.3609, 0.3191
Android (android.graphics.Color)	4293701303 (0xFFECAEB7)
YUV	193.5640, -5.2081, 37.2164
Hunter-Lab	71.7856, 19.3018, 7.5646

Details

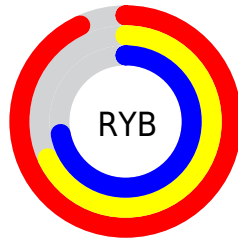
The CIELCh color **77, 24.316, 10.267** is a light color, and the websafe version is hex **CC9999**. A complement of this color would be **89, 21.397, 185.283**, and the grayscale version is **78, 0.009, 296.813**.

A 20% lighter version of the original color is **93, 10.093, 352.810**, and **57, 24.324, 10.297** is the 20% darker color. If you saturate the color by 10%, you get **71, 34.410, 11.773**, and if you desaturate by 10%, it is **83, 14.639, 9.041**.

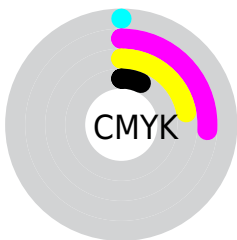
Distribution



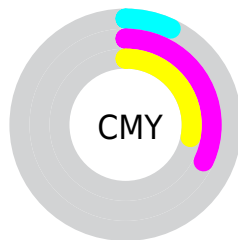
- Red (93%)
- Green (68%)
- Blue (72%)



- Red (93%)
- Yellow (68%)
- Blue (72%)



- Cyan (0%)
- Magenta (26%)
- Yellow (22%)
- Black (7%)



- Cyan (7%)
- Magenta (32%)
- Yellow (28%)

Brightness & Saturation Gradients

These gradients show how the CIELCh color 77, 24.316, 10.267 changes by changing the brightness by 10 percent. The first figure shows a shift by +10% for each color and the second figure -10%.

Similar to the brightness gradients but the following saturation gradients show a change of the CIELCh color 77, 24.316, 10.267 by changing the saturation by 10% instead.

77, 24.316, 10.267

77, 24.316, 10.267

100, 24.316,
10.267

67, 24.316, 10.267

97, 24.316, 10.267

57, 24.316, 10.267

47, 24.316, 10.267

37, 24.316, 10.267

27, 24.316, 10.267

17, 24.316, 10.267

7, 24.316, 10.267

0, 24.316, 10.267

77, 24.316, 10.267

77, 24.316, 10.267

71, 34.410, 11.773

83, 14.639, 9.041

66, 44.755, 13.646

89, 5.475, 7.967

61, 55.069, 16.017

96, 3.155, 187.417

57, 64.993, 19.032

99, 6.510, 199.095

53, 74.157, 22.813

51, 82.307, 27.361

50, 89.298, 32.356

49, 91.687, 34.078

Harmonies

Complementary

The Complementary color scheme is a pair of colors which are on the opposite of each other on the color wheel.



77, 24.316, 10.267



89, 21.397, 185.283

Rectangle

The Rectangle color scheme consists of four colors that form a rectangle on the color wheel.



77, 24.316, 10.267



77, 24.316, 60.267



77, 24.316, 190.267



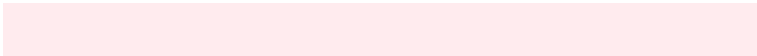
77, 24.316, 240.267

Sweetspot

The Sweet Spot groups the original color and five complimentary colors.



77, 24.314, 10.271



95, 7.480, 8.156



78, 37.904, 321.499



50, 5.340, 8.315



0, 0.000, 0.000



53, 0.007, 296.813

Same Dimension

The Same Dimension uses a secret algorithm to generate beautiful new colors.



77, 24.314, 10.271



79, 32.015, 11.113



82, 19.712, 55.571



46, 4.985, 8.306



38, 74.462, 33.182



7, 28.025, 16.752

Inverse Universe

The Inverse Universe completely reimagines the original color for something new.



77, 24.314, 10.271



79, 32.015, 11.113



84, 17.157, 240.846



46, 4.985, 8.306



38, 74.462, 33.182



7, 28.025, 16.752

Previews

White Background



This preview shows how the CIELCh color 77, 24.316, 10.267 looks on a white background.

Color Contrast Check

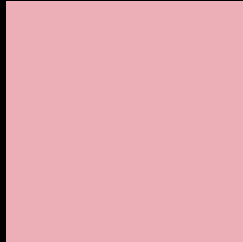
Large Text (above 18pt) WCAG AA × Fail

Any Text WCAG AA × Fail

Large Text (above 18pt) WCAG AAA × Fail

Any Text WCAG AAA × Fail

Black Background



This preview shows how the CIELCh color 77, 24.316, 10.267 looks on a black background.

Color Contrast Check

Large Text (above 18pt) WCAG AA ✓ Pass

Any Text WCAG AA ✓ Pass

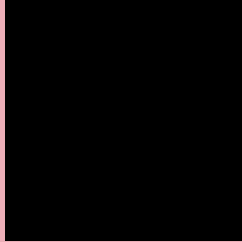
Large Text (above 18pt) WCAG AAA ✓ Pass

Any Text WCAG AAA ✓ Pass

If you want to check with other color combinations, try the [Color Contrast Checker](#).

CIELCh 77, 24.316, 10.267

Background



This preview shows how black text looks on a background with the CIELCh color 77, 24.316, 10.267.

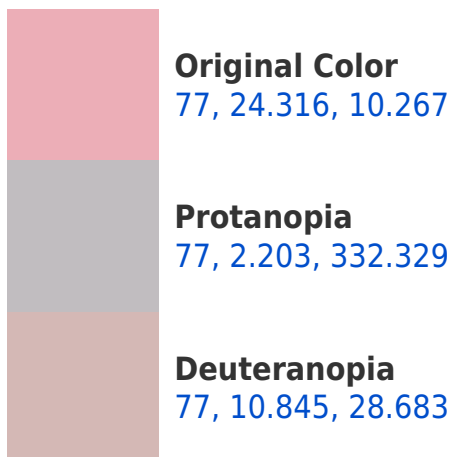


This preview shows how white text looks on a background with the CIELCh color 77, 24.316, 10.267.

Color Blindness Simulation

Color vision deficiency is a very complex topic, and I could not describe the different causes any better than Wikipedia does, so if you want to learn more, you should check out their [article about color blindness](#).

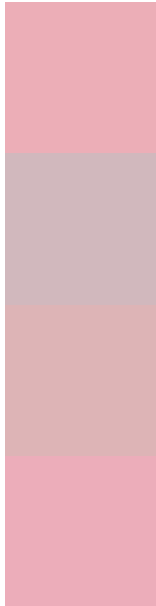
Dichromacy





Tritanopia
77, 25.123, 4.487

Trichromacy



Original Color
77, 24.316, 10.267

Protanomaly
77, 9.780, 4.338

Deuteranomaly
77, 15.780, 16.853

Tritanomaly
77, 25.020, 5.672

Monochromacy



Original Color
77, 24.316, 10.267

Achromatopsia
78, 0.009, 296.813

Achromatomaly
78, 8.418, 9.094

CSS Examples

Text

The CSS property to change the color of the text to CIELCh 77, 24.316, 10.267 is called "color". The color property can be set on classes, ids or directly on the HTML element.

This example shows how text in the color `rgb(236, 174, 183)` looks like.

```
.text, #text, p{  
    color:rgb(236, 174, 183)  
}
```

If you want to add a text shadow in that color use the text-shadow property, you can generate a text shadow directly with our [CSS Text Shadow Generator](#).

Here you see how black text with a 4 pixel rgb(236, 174, 183) colored shadow looks like.

```
.shadow{ text-shadow: 4px 4px 2px rgb(236, 174, 183) }
```

Border

The CSS property to change the border of an element to CIELCh 77, 24.316, 10.267 is called "border". The border property can be set on classes, ids or directly on the HTML element.

This example shows the color as border, it can be applied via the CSS property "border" or "border-color".

```
.border, #border, table{ border:4px solid rgb(236, 174, 183) }
```

If only the border color should be changed use the property `border-color`.

```
.border{ border-color:rgb(236, 174, 183) }
```

If you want to add a box shadow in that color use:

Here you see how a box with a 4 pixel `rgb(236, 174, 183)` colored shadow looks like.

```
.boxshadow{ -moz-box-shadow:4px 4px 4px  
4px rgb(236, 174, 183); -webkit-box-  
shadow:4px 4px 4px 4px rgb(236, 174, 183);  
box-shadow:4px 4px 4px 4px rgb(236, 174,  
183) }
```

Background

The CSS property to change the background color of an element to CIELCh 77, 24.316, 10.267 is called "background". The background property can be set on classes, ids or directly on the HTML element.

```
.background, #background, body{  
background: rgb(236, 174, 183) }
```

If only the background color should be changed can be used:

```
.background{ background-color: rgb(236,  
174, 183) }
```

This example shows the color as background, it is applied via the CSS property "background".

To optimize and compress your CSS code, you can use our [online CSS compressor and optimizer](#) based on csstidy. If you want to create a linear or radial gradient as background or border, check our [CSS Gradient Generator](#).

Hey! You found this booklet interesting? Support Converting Colors with the new Membership Option!

The pro membership hides all ads, plus gives you double the colors in the color bucket, and more awesome pro features!

[Learn more, Memberships starting at \\$2.50/m!](#)

**Follow me
on Twitter!**

@ConvertingColor