

Converting Colors

CIELCh(77, 25.573, 72.885)

Have a look what the booklet for
CIELCh(77, 25.573, 72.885) contains.

CIELCh(77, 25.755, 73.210)	3
<i>Conversions</i>	4
<i>Details</i>	6
<i>Harmonies</i>	11
<i>Previews</i>	20
<i>Color Blindness Simulation</i>	23
<i>CSS Examples</i>	26

Color

CIELCh(77, 25.755, 73.210)

Conversions

Conversions Part 1

Format	Color
Hex	DCB891
RGB	220, 184, 145
RGB Percent	86%, 72%, 57%
CMY	0.1373, 0.2785, 0.4314
CMYK	0.00, 0.16, 0.34, 0.14
HSL	31°, 52%, 72%
HSV	31°, 34%, 86%
XYZ	51.7574, 51.5317, 34.0010
YIQ	190.3180, 33.9750, -4.4970

Conversions

Conversions Part 2

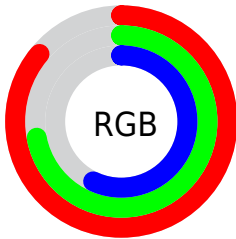
Format	Color
RYB	214, 220, 145
Decimal	14465169
CIELab	77.00, 7.44, 24.66
CIELCh	77, 25.755, 73.210
Yxy	51.5317, 0.3770, 0.3753
Android (android.graphics.Color)	4292655249 (0xFFDCB891)
YUV	190.3180, -22.3418, 26.0311
Hunter-Lab	71.7856, 3.0735, 22.1674

Details

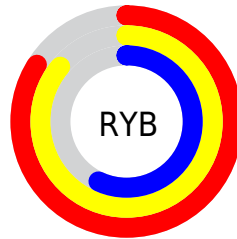
The CIELCh color $77, 25.755, 73.210$ is a light color, and the websafe version is hex `FFCC99`. A complement of this color would be $72, 23.686, 263.185$, and the grayscale version is $77, 0.009, 296.813$.

A 20% lighter version of the original color is $95, 21.703, 93.299$, and $57, 25.914, 73.048$ is the 20% darker color. If you saturate the color by 10%, you get $74, 34.032, 71.905$, and if you desaturate by 10%, it is $80, 17.804, 74.508$.

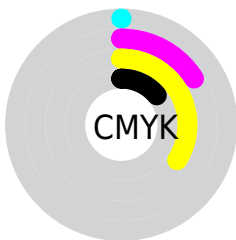
Distribution



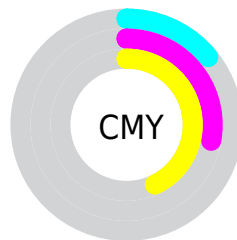
- Red (86%)
- Green (72%)
- Blue (57%)



- Red (84%)
- Yellow (86%)
- Blue (57%)



- Cyan (0%)
- Magenta (16%)
- Yellow (34%)
- Black (14%)



- Cyan (14%)
- Magenta (28%)
- Yellow (43%)

Brightness & Saturation Gradients

These gradients show how the CIELCh color 77, 25.755, 73.210 changes by changing the brightness by 10 percent. The first figure shows a shift by +10% for each color and the second figure -10%.

Similar to the brightness gradients but the following saturation gradients show a change of the CIELCh color 77, 25.755, 73.210 by changing the saturation by 10% instead.

■ 77, 25.755, 73.210

■ 77, 25.755, 73.210

■ 100, 25.755,
73.210

■ 67, 25.755, 73.210

■ 97, 25.755, 73.210

■ 57, 25.755, 73.210

■ 47, 25.755, 73.210

■ 37, 25.755, 73.210

■ 27, 25.755, 73.210

■ 17, 25.755, 73.210

■ 7, 25.755, 73.210

■ 0, 25.755, 73.210

■ 77, 25.755, 73.210

■ 77, 25.755, 73.210

74, 34.032, 71.905

80, 17.804, 74.508

71, 42.580, 70.568

83, 10.187, 75.770

68, 51.251, 69.177

86, 2.891, 76.928

66, 59.722, 67.658

90, 4.110, 258.371

63, 67.367, 65.849

93, 10.844,
259.497

61, 73.198, 63.455

96, 9.931, 222.317

59, 75.806, 61.807

98, 11.808,
198.717

Harmonies

Complementary

The Complementary color scheme is a pair of colors which are on the opposite of each other on the color wheel.



77, 25.755, 73.210



72, 23.686, 263.185

Rectangle

The Rectangle color scheme consists of four colors that form a rectangle on the color wheel.



77, 25.755, 73.210



77, 25.755, 123.210



77, 25.755, 253.210



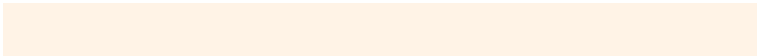
77, 25.755, 303.210

Sweetspot

The Sweet Spot groups the original color and five complimentary colors.



77, 25.755, 73.217



96, 8.078, 76.260



69, 34.229, 347.893



51, 5.528, 76.088



0, 0.000, 0.000



53, 0.007, 296.813

Same Dimension

The Same Dimension uses a secret algorithm to generate beautiful new colors.



77, 25.755, 73.217



86, 35.468, 72.268



86, 38.577, 107.629



44, 4.052, 76.338



47, 63.291, 62.458



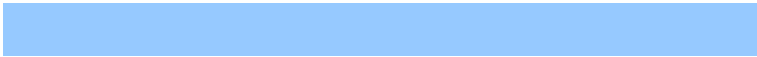
11, 18.373, 62.122

Inverse Universe

The Inverse Universe completely reimagines the original color for something new.



72, 23.686, 263.185



79, 31.982, 264.856



63, 42.006, 295.061



44, 3.975, 258.862



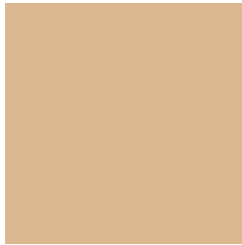
36, 56.023, 285.758



7, 18.687, 275.718

Previews

White Background



This preview shows how the CIELCh color 77, 25.755, 73.210 looks on a white background.

Color Contrast Check

Large Text (above 18pt) WCAG AA × Fail

Any Text WCAG AA × Fail

Large Text (above 18pt) WCAG AAA × Fail

Any Text WCAG AAA × Fail

Black Background



This preview shows how the CIELCh color 77, 25.755, 73.210 looks on a black background.

Color Contrast Check

Large Text (above 18pt) WCAG AA ✓ Pass

Any Text WCAG AA ✓ Pass

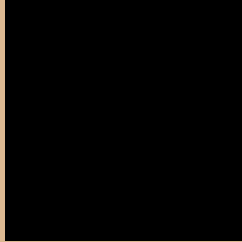
Large Text (above 18pt) WCAG AAA ✓ Pass

Any Text WCAG AAA ✓ Pass

If you want to check with other color combinations, try the [Color Contrast Checker](#).

CIELCh 77, 25.755, 73.210

Background



This preview shows how black text looks on a background with the CIELCh color 77, 25.755, 73.210.



This preview shows how white text looks on a background with the CIELCh color 77, 25.755, 73.210.

Color Blindness Simulation

Color vision deficiency is a very complex topic, and I could not describe the different causes any better than Wikipedia does, so if you want to learn more, you should check out their [article about color blindness](#).

Dichromacy



Original Color

77, 25.755, 73.210

Protanopia

77, 22.989, 94.886

Deuteranopia

77, 26.662, 69.042



Tritanopia
77, 19.037, 359.753

Trichromacy



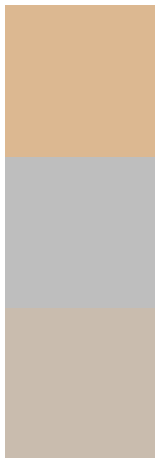
Original Color
77, 25.755, 73.210

Protanomaly
77, 23.531, 86.871

Deuteranomaly
77, 26.388, 69.723

Tritanomaly
77, 17.147, 31.426

Monochromacy



Original Color
77, 25.755, 73.210

Achromatopsia
77, 0.009, 296.813

Achromatomaly
77, 9.000, 75.699

CSS Examples

Text

The CSS property to change the color of the text to CIELCh 77, 25.755, 73.210 is called "color". The color property can be set on classes, ids or directly on the HTML element.

This example shows how text in the color `rgb(220, 184, 145)` looks like.

```
.text, #text, p{  
    color:rgb(220, 184, 145)  
}
```

If you want to add a text shadow in that color use the text-shadow property, you can generate a text shadow directly with our [CSS Text Shadow Generator](#).

Here you see how black text with a 4 pixel rgb(220, 184, 145) colored shadow looks like.

```
.shadow{ text-shadow: 4px 4px 2px rgb(220, 184, 145) }
```

Border

The CSS property to change the border of an element to CIELCh 77, 25.755, 73.210 is called "border". The border property can be set on classes, ids or directly on the HTML element.

This example shows the color as border, it can be applied via the CSS property "border" or "border-color".

```
.border, #border, table{ border:4px solid rgb(220, 184, 145) }
```

If only the border color should be changed use the property `border-color`.

```
.border{ border-color:rgb(220, 184, 145) }
```

If you want to add a box shadow in that color use:

Here you see how a box with a 4 pixel `rgb(220, 184, 145)` colored shadow looks like.

```
.boxshadow{ -moz-box-shadow:4px 4px 4px  
4px rgb(220, 184, 145); -webkit-box-  
shadow:4px 4px 4px 4px rgb(220, 184, 145);  
box-shadow:4px 4px 4px 4px rgb(220, 184,  
145) }
```

Background

The CSS property to change the background color of an element to CIELCh 77, 25.755, 73.210 is called "background". The background property can be set on classes, ids or directly on the HTML element.

```
.background, #background, body{  
background: rgb(220, 184, 145) }
```

If only the background color should be changed can be used:

```
.background{ background-color: rgb(220,  
184, 145) }
```

This example shows the color as background, it is applied via the CSS property "background".

To optimize and compress your CSS code, you can use our [online CSS compressor and optimizer](#) based on csstidy. If you want to create a linear or radial gradient as background or border, check our [CSS Gradient Generator](#).

Hey! You found this booklet interesting? Support Converting Colors with the new Membership Option!

The pro membership hides all ads, plus gives you double the colors in the color bucket, and more awesome pro features!

[Learn more, Memberships starting at \\$2.50/m!](#)

**Follow me
on Twitter!**

@ConvertingColor