

Converting Colors

CIELCh(77, 29.100, 4.766)

Have a look what the booklet for
CIELCh(77, 29.100, 4.766) contains.

CIELCh(77, 29.226, 4.179)	3
<i>Conversions</i>	4
<i>Details</i>	6
<i>Harmonies</i>	11
<i>Previews</i>	20
<i>Color Blindness Simulation</i>	23
<i>CSS Examples</i>	26

Color

CIELCh(77, 29.226, 4.179)

Conversions

Conversions Part 1

Format	Color
Hex	F3AABB
RGB	243, 170, 187
RGB Percent	95%, 67%, 73%
CMY	0.0461, 0.3324, 0.2658
CMYK	0.00, 0.30, 0.23, 0.05
HSL	346°, 76%, 81%
HSV	346°, 30%, 95%
XYZ	60.4596, 51.5317, 53.9031
YIQ	193.7650, 38.0510, 20.7630

Conversions

Conversions Part 2

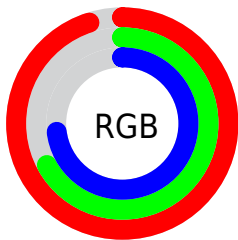
Format	Color
R _Y B	243, 170, 187
Decimal	15968955
CIE Lab	77.00, 29.15, 2.13
CIE LCh	77, 29.226, 4.179
Yxy	51.5317, 0.3644, 0.3106
Android (android.graphics.Color)	4294159035 (0xFFF3AABB)
YUV	193.7650, -3.3351, 43.1791
Hunter-Lab	71.7856, 24.7122, 5.7297

Details

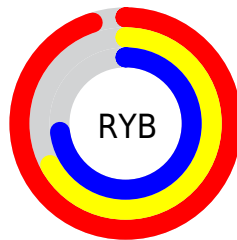
The CIELCh color $77, 29.226, 4.179$ is a light color, and the websafe version is hex `CC9999`. A complement of this color would be $91, 26.088, 177.886$, and the grayscale version is $78, 0.009, 296.813$.

A 20% lighter version of the original color is $93, 13.569, 340.138$, and $57, 29.446, 4.187$ is the 20% darker color. If you saturate the color by 10%, you get $71, 39.568, 5.805$, and if you desaturate by 10%, it is $83, 19.092, 2.838$.

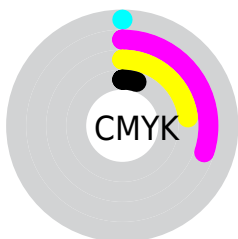
Distribution



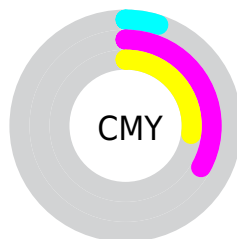
- Red (95%)
- Green (67%)
- Blue (73%)



- Red (95%)
- Yellow (67%)
- Blue (73%)



- Cyan (0%)
- Magenta (30%)
- Yellow (23%)
- Black (5%)



- Cyan (5%)
- Magenta (33%)
- Yellow (27%)

Brightness & Saturation Gradients

These gradients show how the CIELCh color 77, 29.226, 4.179 changes by changing the brightness by 10 percent. The first figure shows a shift by +10% for each color and the second figure -10%.

Similar to the brightness gradients but the following saturation gradients show a change of the CIELCh color 77, 29.226, 4.179 by changing the saturation by 10% instead.

 77, 29.226, 4.179

 77, 29.226, 4.179

 100, 29.226, 4.179

 67, 29.226, 4.179

 97, 29.226, 4.179

 57, 29.226, 4.179

 47, 29.226, 4.179

 37, 29.226, 4.179

 27, 29.226, 4.179

 17, 29.226, 4.179

 7, 29.226, 4.179

 0, 29.226, 4.179

 77, 29.226, 4.179

 77, 29.226, 4.179

71, 39.568, 5.805

83, 19.092, 2.838

66, 49.864, 7.810

89, 9.331, 1.686

61, 59.739, 10.332

96, 0.022, 333.326

57, 68.761, 13.533

99, 4.057, 199.311

54, 76.563, 17.566

52, 83.034, 22.484

51, 88.547, 27.948

Harmonies

Complementary

The Complementary color scheme is a pair of colors which are on the opposite of each other on the color wheel.



77, 29.226, 4.179



91, 26.088, 177.886

Rectangle

The Rectangle color scheme consists of four colors that form a rectangle on the color wheel.



77, 29.226, 4.179



77, 29.226, 54.179



77, 29.226, 184.179



77, 29.226, 234.179

Sweetspot

The Sweet Spot groups the original color and five complimentary colors.



77, 29.223, 4.182



94, 8.690, 1.577



77, 43.558, 319.119



49, 6.060, 1.737



0, 0.000, 0.000



53, 0.007, 296.813

Same Dimension

The Same Dimension uses a secret algorithm to generate beautiful new colors.



77, 29.223, 4.182



77, 36.788, 5.129



81, 23.861, 46.149



48, 5.315, 1.628



39, 71.862, 26.923



9, 29.876, 15.100

Inverse Universe

The Inverse Universe completely reimagines the original color for something new.



77, 29.223, 4.182



77, 36.788, 5.129



86, 19.651, 229.953



48, 5.315, 1.628



39, 71.862, 26.923



9, 29.876, 15.100

Previews

White Background



This preview shows how the CIELCh color 77, 29.226, 4.179 looks on a white background.

Color Contrast Check

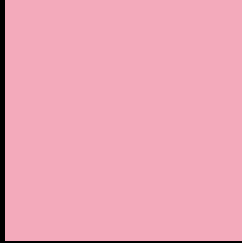
Large Text (above 18pt) WCAG AA × Fail

Any Text WCAG AA × Fail

Large Text (above 18pt) WCAG AAA × Fail

Any Text WCAG AAA × Fail

Black Background



This preview shows how the CIELCh color 77, 29.226, 4.179 looks on a black background.

Color Contrast Check

Large Text (above 18pt) WCAG AA ✓ Pass

Any Text WCAG AA ✓ Pass

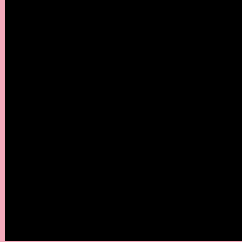
Large Text (above 18pt) WCAG AAA ✓ Pass

Any Text WCAG AAA ✓ Pass

If you want to check with other color combinations, try the [Color Contrast Checker](#).

CIELCh 77, 29.226, 4.179

Background



This preview shows how black text looks on a background with the CIELCh color 77, 29.226, 4.179.



This preview shows how white text looks on a background with the CIELCh color 77, 29.226, 4.179.

Color Blindness Simulation

Color vision deficiency is a very complex topic, and I could not describe the different causes any better than Wikipedia does, so if you want to learn more, you should check out their [article about color blindness](#).

Dichromacy



Original Color

77, 29.226, 4.179

Protanopia

77, 4.976, 303.282

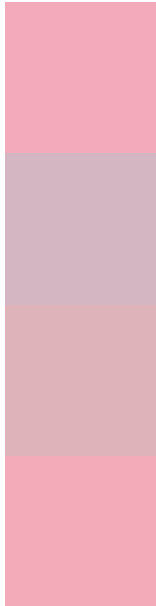
Deuteranopia

77, 10.262, 17.229



Tritanopia
77, 28.473, 8.043

Trichromacy



Original Color
77, 29.226, 4.179

Protanomaly
77, 12.594, 349.804

Deuteranomaly
77, 17.172, 8.354

Tritanomaly
77, 28.547, 6.992

Monochromacy



Original Color
77, 29.226, 4.179

Achromatopsia
78, 0.009, 296.813

Achromatomaly
78, 10.794, 0.042

CSS Examples

Text

The CSS property to change the color of the text to CIELCh 77, 29.226, 4.179 is called "color". The color property can be set on classes, ids or directly on the HTML element.

This example shows how text in the color `rgb(243, 170, 187)` looks like.

```
.text, #text, p{  
    color:rgb(243, 170, 187)  
}
```

If you want to add a text shadow in that color use the text-shadow property, you can generate a text shadow directly with our [CSS Text Shadow Generator](#).

Here you see how black text with a 4 pixel rgb(243, 170, 187) colored shadow looks like.

```
.shadow{ text-shadow: 4px 4px 2px rgb(243, 170, 187) }
```

Border

The CSS property to change the border of an element to CIELCh 77, 29.226, 4.179 is called "border". The border property can be set on classes, ids or directly on the HTML element.

This example shows the color as border, it can be applied via the CSS property "border" or "border-color".

```
.border, #border, table{ border:4px solid rgb(243, 170, 187) }
```

If only the border color should be changed use the property `border-color`.

```
.border{ border-color:rgb(243, 170, 187) }
```

If you want to add a box shadow in that color use:

Here you see how a box with a 4 pixel `rgb(243, 170, 187)` colored shadow looks like.

```
.boxshadow{ -moz-box-shadow:4px 4px 4px  
4px rgb(243, 170, 187); -webkit-box-  
shadow:4px 4px 4px 4px rgb(243, 170, 187);  
box-shadow:4px 4px 4px 4px rgb(243, 170,  
187) }
```

Background

The CSS property to change the background color of an element to CIELCh 77, 29.226, 4.179 is called "background". The background property can be set on classes, ids or directly on the HTML element.

```
.background, #background, body{  
background: rgb(243, 170, 187) }
```

If only the background color should be changed can be used:

```
.background{ background-color: rgb(243,  
170, 187) }
```

This example shows the color as background, it is applied via the CSS property "background".

To optimize and compress your CSS code, you can use our [online CSS compressor and optimizer](#) based on csstidy. If you want to create a linear or radial gradient as background or border, check our [CSS Gradient Generator](#).

Hey! You found this booklet interesting? Support Converting Colors with the new Membership Option!

The pro membership hides all ads, plus gives you double the colors in the color bucket, and more awesome pro features!

[Learn more, Memberships starting at \\$2.50/m!](#)

**Follow me
on Twitter!**

@ConvertingColor