

Converting Colors

CIELCh(77, 34.169, 3.723)

Have a look what the booklet for
CIELCh(77, 34.169, 3.723) contains.

CIELCh(77, 34.169, 3.723)	3
<i>Conversions</i>	4
<i>Details</i>	6
<i>Harmonies</i>	11
<i>Previews</i>	20
<i>Color Blindness Simulation</i>	23
<i>CSS Examples</i>	26

Color

CIELCh(77, 34.169, 3.723)

Conversions

Conversions Part 1

Format	Color
Hex	FBA6BB
RGB	251, 166, 187
RGB Percent	98%, 65%, 73%
CMY	0.0145, 0.3480, 0.2656
CMYK	0.00, 0.34, 0.25, 0.01
HSL	345°, 92%, 82%
HSV	345°, 34%, 99%
XYZ	62.5710, 51.5317, 53.8122
YIQ	193.8090, 43.9190, 24.5510

Conversions

Conversions Part 2

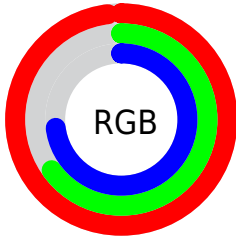
Format	Color
R _Y B	251, 166, 187
Decimal	16492219
CIE Lab	77.00, 34.10, 2.22
CIE LCh	77, 34.169, 3.723
Yxy	51.5317, 0.3726, 0.3069
Android (android.graphics.Color)	4294682299 (0xFFFBA6BB)
YUV	193.8090, -3.3568, 50.1565
Hunter-Lab	71.7856, 29.9624, 5.8047

Details

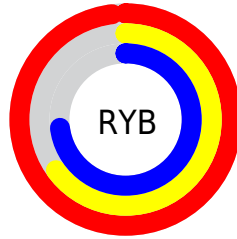
The CIELCh color **77, 34.169, 3.723** is a light color, and the websafe version is hex **FF9999**. A complement of this color would be **93, 30.202, 176.386**, and the grayscale version is **78, 0.009, 296.813**.

A 20% lighter version of the original color is **92, 16.013, 337.915**, and **57, 34.205, 3.754** is the 20% darker color. If you saturate the color by 10%, you get **71, 44.790, 5.474**, and if you desaturate by 10%, it is **83, 23.643, 2.288**.

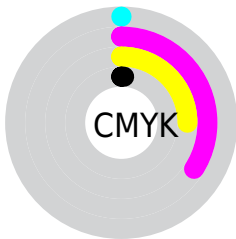
Distribution



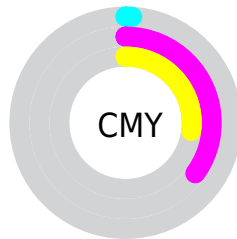
- Red (98%)
- Green (65%)
- Blue (73%)



- Red (98%)
- Yellow (65%)
- Blue (73%)



- Cyan (0%)
- Magenta (34%)
- Yellow (25%)
- Black (1%)



- Cyan (1%)
- Magenta (35%)
- Yellow (27%)

Brightness & Saturation Gradients

These gradients show how the CIELCh color 77, 34.169, 3.723 changes by changing the brightness by 10 percent. The first figure shows a shift by +10% for each color and the second figure -10%.

Similar to the brightness gradients but the following saturation gradients show a change of the CIELCh color 77, 34.169, 3.723 by changing the saturation by 10% instead.

77, 34.169, 3.723

77, 34.169, 3.723

100, 34.169, 3.723

67, 34.169, 3.723

97, 34.169, 3.723

57, 34.169, 3.723

47, 34.169, 3.723

37, 34.169, 3.723

27, 34.169, 3.723

17, 34.169, 3.723

7, 34.169, 3.723

0, 34.169, 3.723

77, 34.169, 3.723

77, 34.169, 3.723

71, 44.790, 5.474

83, 23.643, 2.288

66, 55.191, 7.646

90, 13.428, 1.073

61, 64.944, 10.389

96, 3.635, 359.935

58, 73.599, 13.872

100, 1.289,
199.838

55, 80.854, 18.236

53, 86.750, 23.471

53, 90.015, 26.905

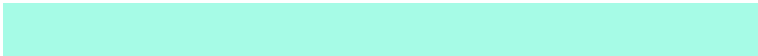
Harmonies

Complementary

The Complementary color scheme is a pair of colors which are on the opposite of each other on the color wheel.



77, 34.169, 3.723



93, 30.202, 176.386

Rectangle

The Rectangle color scheme consists of four colors that form a rectangle on the color wheel.



77, 34.169, 3.723



77, 34.169, 53.723



77, 34.169, 183.723



77, 34.169, 233.723

Sweetspot

The Sweet Spot groups the original color and five complimentary colors.



77, 34.166, 3.726



93, 9.736, 0.647



77, 50.270, 318.767



49, 6.664, 0.802



0, 0.000, 0.000



53, 0.007, 296.813

Same Dimension

The Same Dimension uses a secret algorithm to generate beautiful new colors.



77, 34.166, 3.726



74, 42.288, 4.947



81, 28.252, 44.319



49, 5.438, 0.591



40, 72.003, 25.820



9, 30.773, 15.306

Inverse Universe

The Inverse Universe completely reimagines the original color for something new.



77, 34.166, 3.726



74, 42.288, 4.947



88, 22.476, 228.098



49, 5.438, 0.591



40, 72.003, 25.820



9, 30.773, 15.306

Previews

White Background



This preview shows how the CIELCh color 77, 34.169, 3.723 looks on a white background.

Color Contrast Check

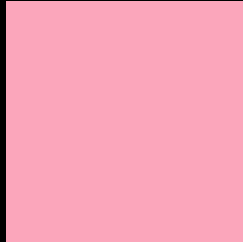
Large Text (above 18pt) WCAG AA × Fail

Any Text WCAG AA × Fail

Large Text (above 18pt) WCAG AAA × Fail

Any Text WCAG AAA × Fail

Black Background



This preview shows how the CIELCh color 77, 34.169, 3.723 looks on a black background.

Color Contrast Check

Large Text (above 18pt) WCAG AA ✓ Pass

Any Text WCAG AA ✓ Pass

Large Text (above 18pt) WCAG AAA ✓ Pass

Any Text WCAG AAA ✓ Pass

If you want to check with other color combinations, try the [Color Contrast Checker](#).

CIELCh 77, 34.169, 3.723

Background



This preview shows how black text looks on a background with the CIELCh color 77, 34.169, 3.723.

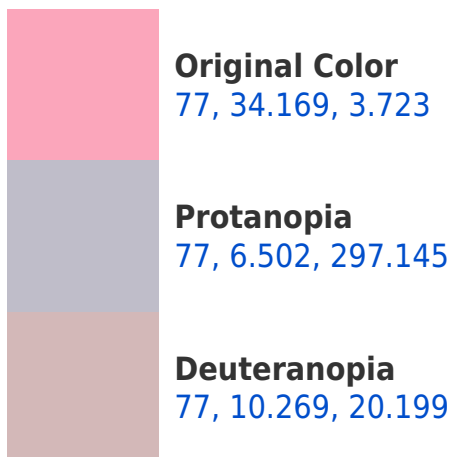


This preview shows how white text looks on a background with the CIELCh color 77, 34.169, 3.723.

Color Blindness Simulation

Color vision deficiency is a very complex topic, and I could not describe the different causes any better than Wikipedia does, so if you want to learn more, you should check out their [article about color blindness](#).

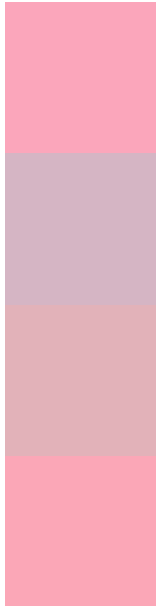
Dichromacy





Tritanopia
77, 33.197, 10.599

Trichromacy



Original Color
77, 34.169, 3.723

Protanomaly
77, 14.373, 346.670

Deuteranomaly
77, 18.718, 9.561

Tritanomaly
77, 33.346, 7.885

Monochromacy



Original Color
77, 34.169, 3.723

Achromatopsia
78, 0.009, 296.813

Achromatomaly
78, 12.401, 0.318

CSS Examples

Text

The CSS property to change the color of the text to CIELCh 77, 34.169, 3.723 is called "color". The color property can be set on classes, ids or directly on the HTML element.

This example shows how text in the color `rgb(251, 166, 187)` looks like.

```
.text, #text, p{  
    color:rgb(251, 166, 187)  
}
```

If you want to add a text shadow in that color use the text-shadow property, you can generate a text shadow directly with our [CSS Text Shadow Generator](#).

Here you see how black text with a 4 pixel rgb(251, 166, 187) colored shadow looks like.

```
.shadow{ text-shadow: 4px 4px 2px rgb(251, 166, 187) }
```

Border

The CSS property to change the border of an element to CIELCh 77, 34.169, 3.723 is called "border". The border property can be set on classes, ids or directly on the HTML element.

This example shows the color as border, it can be applied via the CSS property "border" or "border-color".

```
.border, #border, table{ border:4px solid rgb(251, 166, 187) }
```

If only the border color should be changed use the property `border-color`.

```
.border{ border-color:rgb(251, 166, 187) }
```

If you want to add a box shadow in that color use:

Here you see how a box with a 4 pixel `rgb(251, 166, 187)` colored shadow looks like.

```
.boxshadow{ -moz-box-shadow:4px 4px 4px  
4px rgb(251, 166, 187); -webkit-box-  
shadow:4px 4px 4px 4px rgb(251, 166, 187);  
box-shadow:4px 4px 4px 4px rgb(251, 166,  
187) }
```

Background

The CSS property to change the background color of an element to CIELCh 77, 34.169, 3.723 is called "background". The background property can be set on classes, ids or directly on the HTML element.

```
.background, #background, body{  
background: rgb(251, 166, 187) }
```

If only the background color should be changed can be used:

```
.background{ background-color: rgb(251,  
166, 187) }
```

This example shows the color as background, it is applied via the CSS property "background".

To optimize and compress your CSS code, you can use our [online CSS compressor and optimizer](#) based on csstidy. If you want to create a linear or radial gradient as background or border, check our [CSS Gradient Generator](#).

Hey! You found this booklet interesting? Support Converting Colors with the new Membership Option!

The pro membership hides all ads, plus gives you double the colors in the color bucket, and more awesome pro features!

[Learn more, Memberships starting at \\$2.50/m!](#)

**Follow me
on Twitter!**

@ConvertingColor