

Converting Colors

CIELCh(77, 35.682, 12.564)

Have a look what the booklet for
CIELCh(77, 35.682, 12.564) contains.

CIELCh(77, 35.569, 12.535)	3
<i>Conversions</i>	4
<i>Details</i>	6
<i>Harmonies</i>	11
<i>Previews</i>	20
<i>Color Blindness Simulation</i>	23
<i>CSS Examples</i>	26

Color

CIELCh(77, 35.569, 12.535)

Conversions

Conversions Part 1

Format	Color
Hex	FFA5B1
RGB	255, 165, 177
RGB Percent	100%, 65%, 69%
CMY	0.0000, 0.3517, 0.3047
CMYK	0.00, 0.35, 0.30, 0.00
HSL	352°, 100%, 82%
HSV	352°, 35%, 100%
XYZ	62.8408, 51.5317, 48.3891
YIQ	193.2780, 49.7880, 22.8120

Conversions

Conversions Part 2

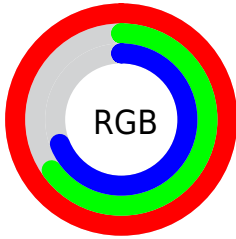
Format	Color
RYB	255, 165, 177
Decimal	16754097
CIELab	77.00, 34.72, 7.72
CIELCh	77, 35.569, 12.535
Yxy	51.5317, 0.3861, 0.3166
Android (android.graphics.Color)	4294944177 (0xFFFFA5B1)
YUV	193.2780, -8.0251, 54.1302
Hunter-Lab	71.7856, 30.6333, 10.2838

Details

The CIELCh color **77, 35.569, 12.535** is a light color, and the websafe version is hex **FF9999**. A complement of this color would be **94, 29.522, 185.420**, and the grayscale version is **78, 0.009, 296.813**.

A 20% lighter version of the original color is **91, 13.757, 353.648**, and **57, 35.410, 12.129** is the 20% darker color. If you saturate the color by 10%, you get **71, 46.480, 14.323**, and if you desaturate by 10%, it is **83, 24.704, 11.016**.

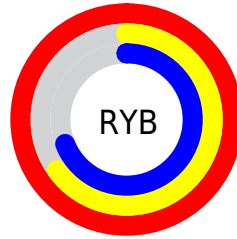
Distribution



Red (100%)

Green (65%)

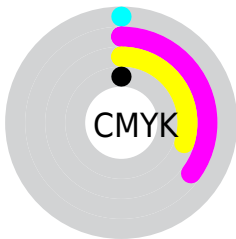
Blue (69%)



Red (100%)

Yellow (65%)

Blue (69%)

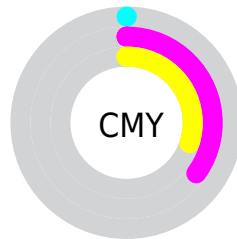


Cyan (0%)

Magenta (35%)

Yellow (30%)

Black (0%)



Cyan (0%)

Magenta (35%)

Yellow (30%)


Brightness & Saturation Gradients

These gradients show how the CIELCh color 77, 35.569, 12.535 changes by changing the brightness by 10 percent. The first figure shows a shift by +10% for each color and the second figure -10%.

Similar to the brightness gradients but the following saturation gradients show a change of the CIELCh color 77, 35.569, 12.535 by changing the saturation by 10% instead.

 77, 35.569, 12.535

 77, 35.569, 12.535

 100, 35.569,
12.535

 67, 35.569, 12.535

 97, 35.569, 12.535

 57, 35.569, 12.535

 47, 35.569, 12.535

 37, 35.569, 12.535

 27, 35.569, 12.535

 17, 35.569, 12.535

 7, 35.569, 12.535

 0, 35.569, 12.535

 77, 35.569, 12.535

 77, 35.569, 12.535

71, 46.480, 14.323

83, 24.704, 11.016

66, 57.556, 16.654

90, 14.459, 9.812

61, 68.287, 19.621

96, 4.779, 8.745

58, 78.276, 23.349

100, 0.012,
296.813

55, 87.224, 27.835

54, 94.912, 32.754

53, 98.166, 34.960

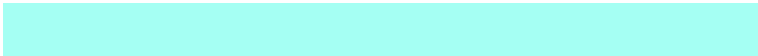
Harmonies

Complementary

The Complementary color scheme is a pair of colors which are on the opposite of each other on the color wheel.



77, 35.569, 12.535



94, 29.522, 185.420

Rectangle

The Rectangle color scheme consists of four colors that form a rectangle on the color wheel.



77, 35.569, 12.535



77, 35.569, 62.535



77, 35.569, 192.535



77, 35.569, 242.535

Sweetspot

The Sweet Spot groups the original color and five complimentary colors.



77, 35.435, 12.486



93, 10.350, 9.365



78, 54.013, 321.905



48, 6.984, 9.508



0, 0.000, 0.000



53, 0.007, 296.813

Same Dimension

The Same Dimension uses a secret algorithm to generate beautiful new colors.



77, 35.435, 12.486



73, 42.958, 13.694



84, 29.044, 54.913



50, 5.325, 9.209



40, 78.310, 34.087



10, 32.380, 21.706

Inverse Universe

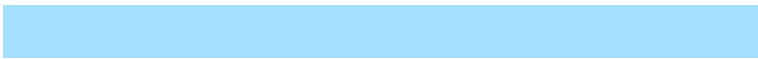
The Inverse Universe completely reimagines the original color for something new.



77, 35.435, 12.486



73, 42.958, 13.694



86, 23.911, 242.361



50, 5.325, 9.209



40, 78.310, 34.087



10, 32.380, 21.706

Previews

White Background



This preview shows how the CIELCh color 77, 35.569, 12.535 looks on a white background.

Color Contrast Check

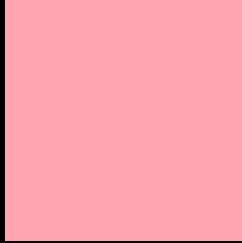
Large Text (above 18pt) WCAG AA × Fail

Any Text WCAG AA × Fail

Large Text (above 18pt) WCAG AAA × Fail

Any Text WCAG AAA × Fail

Black Background



This preview shows how the CIELCh color 77, 35.569, 12.535 looks on a black background.

Color Contrast Check

Large Text (above 18pt) WCAG AA ✓ Pass

Any Text WCAG AA ✓ Pass

Large Text (above 18pt) WCAG AAA ✓ Pass

Any Text WCAG AAA ✓ Pass

If you want to check with other color combinations, try the [Color Contrast Checker](#).

CIELCh 77, 35.569, 12.535

Background



This preview shows how black text looks on a background with the CIELCh color 77, 35.569, 12.535.

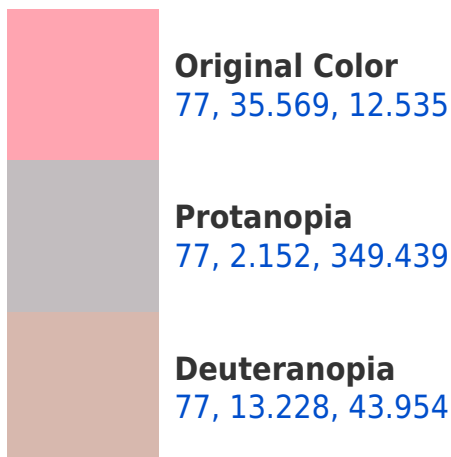


This preview shows how white text looks on a background with the CIELCh color 77, 35.569, 12.535.

Color Blindness Simulation

Color vision deficiency is a very complex topic, and I could not describe the different causes any better than Wikipedia does, so if you want to learn more, you should check out their [article about color blindness](#).

Dichromacy





Tritanopia
77, 35.587, 11.686

Trichromacy



Original Color
77, 35.569, 12.535



Protanomaly
77, 14.038, 7.409



Deuteranomaly
77, 20.780, 24.050



Tritanomaly
77, 35.587, 11.686

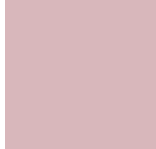
Monochromacy



Original Color
77, 35.569, 12.535



Achromatopsia
78, 0.009, 296.813



Achromatomaly
77, 12.696, 10.787

CSS Examples

Text

The CSS property to change the color of the text to CIELCh 77, 35.569, 12.535 is called "color". The color property can be set on classes, ids or directly on the HTML element.

This example shows how text in the color `rgb(255, 165, 177)` looks like.

```
.text, #text, p{  
    color:rgb(255, 165, 177)  
}
```

If you want to add a text shadow in that color use the text-shadow property, you can generate a text shadow directly with our [CSS Text Shadow Generator](#).

Here you see how black text with a 4 pixel rgb(255, 165, 177) colored shadow looks like.

```
.shadow{ text-shadow: 4px 4px 2px rgb(255, 165, 177) }
```

Border

The CSS property to change the border of an element to CIELCh 77, 35.569, 12.535 is called "border". The border property can be set on classes, ids or directly on the HTML element.

This example shows the color as border, it can be applied via the CSS property "border" or "border-color".

```
.border, #border, table{ border:4px solid rgb(255, 165, 177) }
```

If only the border color should be changed use the property border-color.

```
.border{ border-color:rgb(255, 165, 177) }
```

If you want to add a box shadow in that color use:

Here you see how a box with a 4 pixel rgb(255, 165, 177) colored shadow looks like.

```
.boxshadow{ -moz-box-shadow:4px 4px 4px  
4px rgb(255, 165, 177); -webkit-box-  
shadow:4px 4px 4px 4px rgb(255, 165, 177);  
box-shadow:4px 4px 4px 4px rgb(255, 165,  
177) }
```

Background

The CSS property to change the background color of an element to CIELCh 77, 35.569, 12.535 is called "background". The background property can be set on classes, ids or directly on the HTML element.

```
.background, #background, body{  
background: rgb(255, 165, 177) }
```

If only the background color should be changed can be used:

```
.background{ background-color: rgb(255,  
165, 177) }
```

This example shows the color as background, it is applied via the CSS property "background".

To optimize and compress your CSS code, you can use our [online CSS compressor and optimizer](#) based on csstidy. If you want to create a linear or radial gradient as background or border, check our [CSS Gradient Generator](#).

Hey! You found this booklet interesting? Support Converting Colors with the new Membership Option!

The pro membership hides all ads, plus gives you double the colors in the color bucket, and more awesome pro features!

[Learn more, Memberships starting at \\$2.50/m!](#)

**Follow me
on Twitter!**

@ConvertingColor