

Converting Colors

CIELCh(77, 35.812, 4.078)

Have a look what the booklet for
CIELCh(77, 35.812, 4.078) contains.

CIELCh(77, 35.761, 3.904)	3
<i>Conversions</i>	4
<i>Details</i>	6
<i>Harmonies</i>	11
<i>Previews</i>	20
<i>Color Blindness Simulation</i>	23
<i>CSS Examples</i>	26

Color

CIELCh(77, 35.761, 3.904)

Conversions

Conversions Part 1

Format	Color
Hex	FEA5BB
RGB	254, 165, 187
RGB Percent	100%, 65%, 73%
CMY	0.0042, 0.3532, 0.2669
CMYK	0.00, 0.35, 0.26, 0.00
HSL	345°, 98%, 82%
HSV	345°, 35%, 100%
XYZ	63.2559, 51.5317, 53.5919
YIQ	194.1190, 45.9820, 25.7100

Conversions

Conversions Part 2

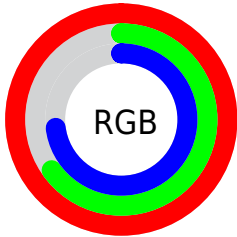
Format	Color
R_{YB}	254, 165, 187
Decimal	16688571
CIE _{Lab}	77.00, 35.68, 2.43
CIE _{LCh}	77, 35.761, 3.904
Yxy	51.5317, 0.3757, 0.3060
Android (android.graphics.Color)	4294878651 (0xFFFEA5BB)
YUV	194.1190, -3.5097, 52.5156
Hunter-Lab	71.7856, 31.6653, 5.9867

Details

The CIELCh color **77, 35.761, 3.904** is a light color, and the websafe version is hex **FF9999**. A complement of this color would be **94, 31.460, 176.231**, and the grayscale version is **78, 0.009, 296.813**.

A 20% lighter version of the original color is **91, 16.628, 337.466**, and **57, 35.851, 4.058** is the 20% darker color. If you saturate the color by 10%, you get **71, 46.464, 5.701**, and if you desaturate by 10%, it is **83, 25.119, 2.436**.

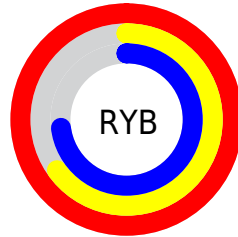
Distribution



Red (100%)

Green (65%)

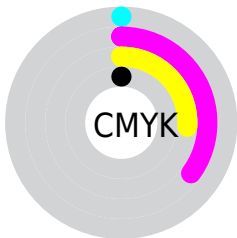
Blue (73%)



Red (100%)

Yellow (65%)

Blue (73%)

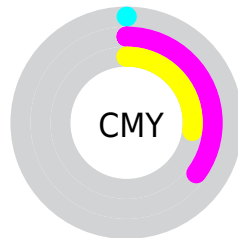


Cyan (0%)

Magenta (35%)

Yellow (26%)

Black (0%)



Cyan (0%)

Magenta (35%)

Yellow (27%)

Brightness & Saturation Gradients

These gradients show how the CIELCh color 77, 35.761, 3.904 changes by changing the brightness by 10 percent. The first figure shows a shift by +10% for each color and the second figure -10%.

Similar to the brightness gradients but the following saturation gradients show a change of the CIELCh color 77, 35.761, 3.904 by changing the saturation by 10% instead.

 77, 35.761, 3.904  77, 35.761, 3.904

 100, 35.761, 3.904  67, 35.761, 3.904

 97, 35.761, 3.904  57, 35.761, 3.904

 47, 35.761, 3.904

 37, 35.761, 3.904

 27, 35.761, 3.904

 17, 35.761, 3.904

 7, 35.761, 3.904

 0, 35.761, 3.904

 77, 35.761, 3.904

 77, 35.761, 3.904

71, 46.464, 5.701

83, 25.119, 2.436

66, 56.897, 7.936

90, 14.770, 1.197

61, 66.617, 10.763

96, 4.838, 0.075

58, 75.178, 14.351

100, 0.370,
201.172

55, 82.310, 18.832

54, 88.102, 24.165

53, 90.744, 26.922

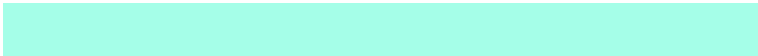
Harmonies

Complementary

The Complementary color scheme is a pair of colors which are on the opposite of each other on the color wheel.



77, 35.761, 3.904



94, 31.460, 176.231

Rectangle

The Rectangle color scheme consists of four colors that form a rectangle on the color wheel.



77, 35.761, 3.904



77, 35.761, 53.904



77, 35.761, 183.904



77, 35.761, 233.904

Sweetspot

The Sweet Spot groups the original color and five complimentary colors.



77, 35.758, 3.907



93, 10.736, 0.742



77, 52.520, 318.819



48, 7.236, 0.893



0, 0.000, 0.000



53, 0.007, 296.813

Same Dimension

The Same Dimension uses a secret algorithm to generate beautiful new colors.



77, 35.758, 3.907



73, 43.364, 5.116



82, 29.663, 44.306



50, 5.529, 0.578



40, 72.748, 25.860



10, 31.715, 16.159

Inverse Universe

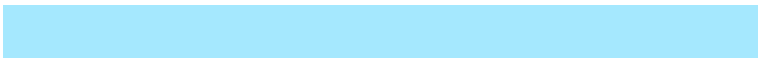
The Inverse Universe completely reimagines the original color for something new.



77, 35.758, 3.907



73, 43.364, 5.116



88, 23.371, 228.249



50, 5.529, 0.578



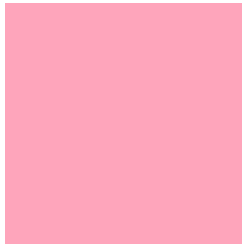
40, 72.748, 25.860



10, 31.715, 16.159

Previews

White Background



This preview shows how the CIELCh color 77, 35.761, 3.904 looks on a white background.

Color Contrast Check

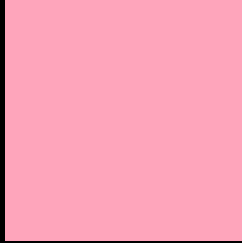
Large Text (above 18pt) WCAG AA × Fail

Any Text WCAG AA × Fail

Large Text (above 18pt) WCAG AAA × Fail

Any Text WCAG AAA × Fail

Black Background



This preview shows how the CIELCh color 77, 35.761, 3.904 looks on a black background.

Color Contrast Check

Large Text (above 18pt) WCAG AA ✓ Pass

Any Text WCAG AA ✓ Pass

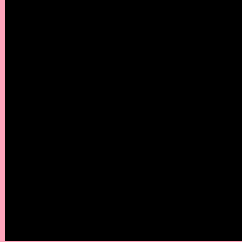
Large Text (above 18pt) WCAG AAA ✓ Pass

Any Text WCAG AAA ✓ Pass

If you want to check with other color combinations, try the [Color Contrast Checker](#).

CIELCh 77, 35.761, 3.904

Background



This preview shows how black text looks on a background with the CIELCh color 77, 35.761, 3.904.



This preview shows how white text looks on a background with the CIELCh color 77, 35.761, 3.904.

Color Blindness Simulation

Color vision deficiency is a very complex topic, and I could not describe the different causes any better than Wikipedia does, so if you want to learn more, you should check out their [article about color blindness](#).

Dichromacy



Original Color

77, 35.761, 3.904

Protanopia

77, 6.502, 297.145

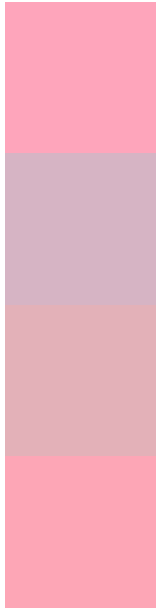
Deuteranopia

77, 10.693, 23.081



Tritanopia
77, 34.390, 11.155

Trichromacy



Original Color
77, 35.761, 3.904

Protanomaly
77, 15.291, 346.650

Deuteranomaly
77, 19.507, 10.109

Tritanomaly
77, 34.516, 8.532

Monochromacy



Original Color
77, 35.761, 3.904

Achromatopsia
78, 0.009, 296.813

Achromatomaly
77, 13.134, 1.554

CSS Examples

Text

The CSS property to change the color of the text to CIELCh 77, 35.761, 3.904 is called "color". The color property can be set on classes, ids or directly on the HTML element.

This example shows how text in the color `rgb(254, 165, 187)` looks like.

```
.text, #text, p{  
    color:rgb(254, 165, 187)  
}
```

If you want to add a text shadow in that color use the text-shadow property, you can generate a text shadow directly with our [CSS Text Shadow Generator](#).

Here you see how black text with a 4 pixel rgb(254, 165, 187) colored shadow looks like.

```
.shadow{ text-shadow: 4px 4px 2px rgb(254, 165, 187) }
```

Border

The CSS property to change the border of an element to CIELCh 77, 35.761, 3.904 is called "border". The border property can be set on classes, ids or directly on the HTML element.

This example shows the color as border, it can be applied via the CSS property "border" or "border-color".

```
.border, #border, table{ border:4px solid rgb(254, 165, 187) }
```

If only the border color should be changed use the property `border-color`.

```
.border{ border-color:rgb(254, 165, 187) }
```

If you want to add a box shadow in that color use:

Here you see how a box with a 4 pixel `rgb(254, 165, 187)` colored shadow looks like.

```
.boxshadow{ -moz-box-shadow:4px 4px 4px  
4px rgb(254, 165, 187); -webkit-box-  
shadow:4px 4px 4px 4px rgb(254, 165, 187);  
box-shadow:4px 4px 4px 4px rgb(254, 165,  
187) }
```

Background

The CSS property to change the background color of an element to CIELCh 77, 35.761, 3.904 is called "background". The background property can be set on classes, ids or directly on the HTML element.

```
.background, #background, body{  
background: rgb(254, 165, 187) }
```

If only the background color should be changed can be used:

```
.background{ background-color: rgb(254,  
165, 187) }
```

This example shows the color as background, it is applied via the CSS property "background".

To optimize and compress your CSS code, you can use our [online CSS compressor and optimizer](#) based on csstidy. If you want to create a linear or radial gradient as background or border, check our [CSS Gradient Generator](#).

Hey! You found this booklet interesting? Support Converting Colors with the new Membership Option!

The pro membership hides all ads, plus gives you double the colors in the color bucket, and more awesome pro features!

[Learn more, Memberships starting at \\$2.50/m!](#)

**Follow me
on Twitter!**

@ConvertingColor