

Converting Colors

CIELCh(77, 36.698, 0.978)

Have a look what the booklet for
CIELCh(77, 36.698, 0.978) contains.

CIELCh(77, 36.965, 1.199)	3
<i>Conversions</i>	4
<i>Details</i>	6
<i>Harmonies</i>	11
<i>Previews</i>	20
<i>Color Blindness Simulation</i>	23
<i>CSS Examples</i>	26

Color

CIELCh(77, 36.965, 1.199)

Conversions

Conversions Part 1

Format	Color
Hex	FFA4BE
RGB	255, 164, 190
RGB Percent	100%, 64%, 75%
CMY	0.0000, 0.3568, 0.2549
CMYK	0.00, 0.36, 0.25, 0.00
HSL	343°, 100%, 82%
HSV	343°, 36%, 100%
XYZ	63.8134, 51.5317, 55.3012
YIQ	194.1730, 45.8900, 27.3780

Conversions

Conversions Part 2

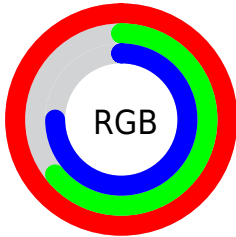
Format	Color
R_{YB}	255, 164, 190
Decimal	16753854
CIE Lab	77.00, 36.96, 0.77
CIE LCh	77, 36.965, 1.199
Yxy	51.5317, 0.3740, 0.3020
Android (android.graphics.Color)	4294943934 (0xFFFFA4BE)
YUV	194.1730, -2.0573, 53.3453
Hunter-Lab	71.7856, 33.0518, 4.5749

Details

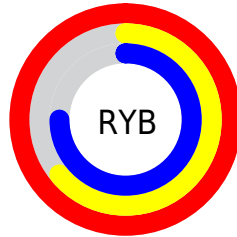
The CIELCh color $77, 36.965, 1.199$ is a light color, and the websafe version is hex `FF99CC`. A complement of this color would be $94, 32.987, 173.322$, and the grayscale version is $78, 0.009, 296.813$.

A 20% lighter version of the original color is $91, 18.323, 333.504$, and $57, 36.696, 0.936$ is the 20% darker color. If you saturate the color by 10%, you get $71, 47.659, 2.970$, and if you desaturate by 10%, it is $83, 26.230, 359.740$.

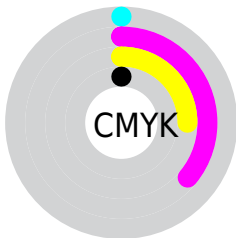
Distribution



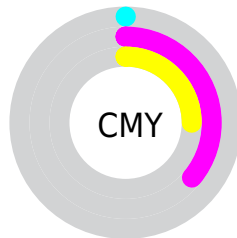
- Red (100%)
- Green (64%)
- Blue (75%)



- Red (100%)
- Yellow (64%)
- Blue (75%)



- Cyan (0%)
- Magenta (36%)
- Yellow (25%)
- Black (0%)



- Cyan (0%)
- Magenta (36%)
- Yellow (25%)

Brightness & Saturation Gradients

These gradients show how the CIELCh color 77, 36.965, 1.199 changes by changing the brightness by 10 percent. The first figure shows a shift by +10% for each color and the second figure -10%.

Similar to the brightness gradients but the following saturation gradients show a change of the CIELCh color 77, 36.965, 1.199 by changing the saturation by 10% instead.

 77, 36.965, 1.199

 77, 36.965, 1.199

 100, 36.965, 1.199

 67, 36.965, 1.199

 97, 36.965, 1.199

 57, 36.965, 1.199

 47, 36.965, 1.199

 37, 36.965, 1.199

 27, 36.965, 1.199

 17, 36.965, 1.199

 7, 36.965, 1.199

 0, 36.965, 1.199

 77, 36.965, 1.199

 77, 36.965, 1.199

71, 47.659, 2.970

83, 26.230,
359.740

66, 57.959, 5.164

90, 15.721,
358.504

62, 67.389, 7.933

58, 75.484, 11.452

96, 5.577, 357.390

56, 81.970, 15.874

100, 0.012,
296.813

54, 86.986, 21.209

54, 88.977, 23.635

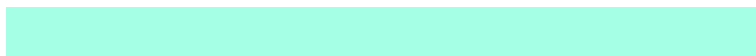
Harmonies

Complementary

The Complementary color scheme is a pair of colors which are on the opposite of each other on the color wheel.



77, 36.965, 1.199



94, 32.987, 173.322

Rectangle

The Rectangle color scheme consists of four colors that form a rectangle on the color wheel.



77, 36.965, 1.199



77, 36.965, 51.199



77, 36.965, 181.199



77, 36.965, 231.199

Sweetspot

The Sweet Spot groups the original color and five complimentary colors.



77, 36.960, 1.200



93, 10.921, 357.979



76, 53.148, 317.276



48, 7.359, 358.128



0, 0.000, 0.000



53, 0.007, 296.813

Same Dimension

The Same Dimension uses a secret algorithm to generate beautiful new colors.



77, 36.960, 1.200



73, 44.811, 2.459



80, 31.199, 39.329



50, 5.627, 357.815



40, 71.193, 22.544



10, 31.522, 13.729

Inverse Universe

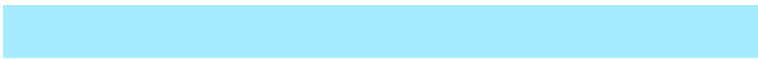
The Inverse Universe completely reimagines the original color for something new.



77, 36.960, 1.200



73, 44.811, 2.459



90, 24.139, 221.361



50, 5.627, 357.815



40, 71.193, 22.544



10, 31.522, 13.729

Previews

White Background



This preview shows how the CIELCh color 77, 36.965, 1.199 looks on a white background.

Color Contrast Check

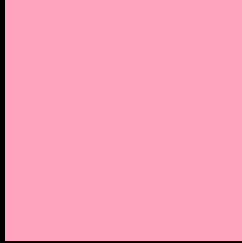
Large Text (above 18pt) WCAG AA × Fail

Any Text WCAG AA × Fail

Large Text (above 18pt) WCAG AAA × Fail

Any Text WCAG AAA × Fail

Black Background



This preview shows how the CIELCh color 77, 36.965, 1.199 looks on a black background.

Color Contrast Check

Large Text (above 18pt) WCAG AA ✓ Pass

Any Text WCAG AA ✓ Pass

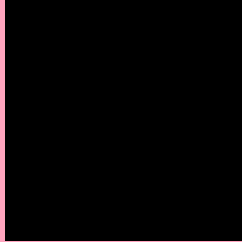
Large Text (above 18pt) WCAG AAA ✓ Pass

Any Text WCAG AAA ✓ Pass

If you want to check with other color combinations, try the [Color Contrast Checker](#).

CIELCh 77, 36.965, 1.199

Background



This preview shows how black text looks on a background with the CIELCh color 77, 36.965, 1.199.

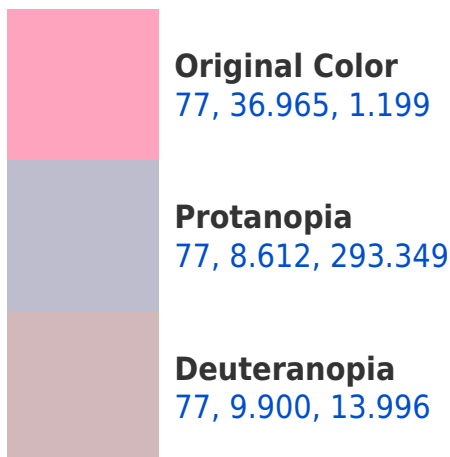


This preview shows how white text looks on a background with the CIELCh color 77, 36.965, 1.199.

Color Blindness Simulation

Color vision deficiency is a very complex topic, and I could not describe the different causes any better than Wikipedia does, so if you want to learn more, you should check out their [article about color blindness](#).

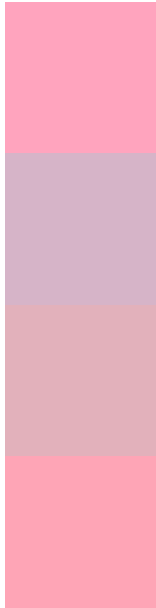
Dichromacy





Tritanopia
77, 34.754, 12.196

Trichromacy



Original Color
77, 36.965, 1.199

Protanomaly
77, 16.529, 340.411

Deuteranomaly
77, 19.382, 5.174

Tritanomaly
77, 35.364, 8.102

Monochromacy



Original Color
77, 36.965, 1.199

Achromatopsia
78, 0.009, 296.813

Achromatomaly
77, 13.478, 357.227

CSS Examples

Text

The CSS property to change the color of the text to CIELCh 77, 36.965, 1.199 is called "color". The color property can be set on classes, ids or directly on the HTML element.

This example shows how text in the color `rgb(255, 164, 190)` looks like.

```
.text, #text, p{  
    color:rgb(255, 164, 190)  
}
```

If you want to add a text shadow in that color use the text-shadow property, you can generate a text shadow directly with our [CSS Text Shadow Generator](#).

Here you see how black text with a 4 pixel rgb(255, 164, 190) colored shadow looks like.

```
.shadow{ text-shadow: 4px 4px 2px rgb(255, 164, 190) }
```

Border

The CSS property to change the border of an element to CIELCh 77, 36.965, 1.199 is called "border". The border property can be set on classes, ids or directly on the HTML element.

This example shows the color as border, it can be applied via the CSS property "border" or "border-color".

```
.border, #border, table{ border:4px solid rgb(255, 164, 190) }
```

If only the border color should be changed use the property `border-color`.

```
.border{ border-color:rgb(255, 164, 190) }
```

If you want to add a box shadow in that color use:

Here you see how a box with a 4 pixel `rgb(255, 164, 190)` colored shadow looks like.

```
.boxshadow{ -moz-box-shadow:4px 4px 4px  
4px rgb(255, 164, 190); -webkit-box-  
shadow:4px 4px 4px 4px rgb(255, 164, 190);  
box-shadow:4px 4px 4px 4px rgb(255, 164,  
190) }
```

Background

The CSS property to change the background color of an element to CIELCh 77, 36.965, 1.199 is called "background". The background property can be set on classes, ids or directly on the HTML element.

```
.background, #background, body{  
background: rgb(255, 164, 190) }
```

If only the background color should be changed can be used:

```
.background{ background-color: rgb(255,  
164, 190) }
```

This example shows the color as background, it is applied via the CSS property "background".

To optimize and compress your CSS code, you can use our [online CSS compressor and optimizer](#) based on csstidy. If you want to create a linear or radial gradient as background or border, check our [CSS Gradient Generator](#).

Hey! You found this booklet interesting? Support Converting Colors with the new Membership Option!

The pro membership hides all ads, plus gives you double the colors in the color bucket, and more awesome pro features!

[Learn more, Memberships starting at \\$2.50/m!](#)

**Follow me
on Twitter!**

@ConvertingColor