

Converting Colors

CIELCh(77, 6.033, 14.731)

Have a look what the booklet for
CIELCh(77, 6.033, 14.731) contains.

CIELCh(77, 6.033, 14.731)	3
<i>Conversions</i>	4
<i>Details</i>	6
<i>Harmonies</i>	11
<i>Previews</i>	20
<i>Color Blindness Simulation</i>	23
<i>CSS Examples</i>	26

Color

CIELCh(77, 6.033, 14.731)

Conversions

Conversions Part 1

Format	Color
Hex	CABABB
RGB	202, 186, 187
RGB Percent	79%, 73%, 73%
CMY	0.2061, 0.2688, 0.2649
CMYK	0.00, 0.08, 0.07, 0.21
HSL	356°, 13%, 76%
HSV	356°, 8%, 79%
XYZ	51.1494, 51.5317, 54.5142
YIQ	190.8980, 9.2150, 3.7030

Conversions

Conversions Part 2

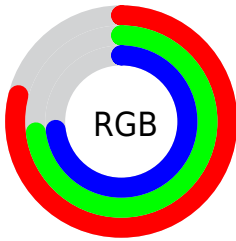
Format	Color
R _Y B	202, 186, 187
Decimal	13286075
CIE Lab	77.00, 5.83, 1.53
CIE LCh	77, 6.033, 14.731
Yxy	51.5317, 0.3254, 0.3278
Android (android.graphics.Color)	4291476155 (0xFFCABABB)
YUV	190.8980, -1.9217, 9.7365
Hunter-Lab	71.7856, 1.5618, 5.2249

Details

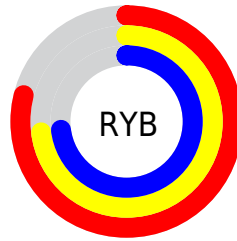
The CIELCh color **77, 6.033, 14.731** is a light color, and the websafe version is hex **CCCCCC**. A complement of this color would be **80, 5.772, 193.782**, and the grayscale version is **77, 0.009, 296.813**.

A 20% lighter version of the original color is **97, 4.656, 13.291**, and **57, 6.035, 14.579** is the 20% darker color. If you saturate the color by 10%, you get **71, 14.149, 15.709**, and if you desaturate by 10%, it is **83, 1.540, 194.455**.

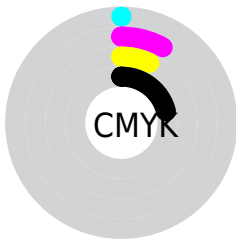
Distribution



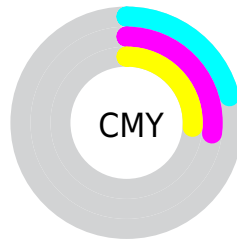
- Red (79%)
- Green (73%)
- Blue (73%)



- Red (79%)
- Yellow (73%)
- Blue (73%)



- Cyan (0%)
- Magenta (8%)
- Yellow (7%)
- Black (21%)



- Cyan (21%)
- Magenta (27%)
- Yellow (26%)

Brightness & Saturation Gradients

These gradients show how the CIELCh color 77, 6.033, 14.731 changes by changing the brightness by 10 percent. The first figure shows a shift by +10% for each color and the second figure -10%.

Similar to the brightness gradients but the following saturation gradients show a change of the CIELCh color 77, 6.033, 14.731 by changing the saturation by 10% instead.

 77, 6.033, 14.731  77, 6.033, 14.731

 100, 6.033, 14.731  67, 6.033, 14.731

 97, 6.033, 14.731  57, 6.033, 14.731

 47, 6.033, 14.731


 37, 6.033, 14.731

 27, 6.033, 14.731

 17, 6.033, 14.731

 7, 6.033, 14.731

 0, 6.033, 14.731

 77, 6.033, 14.731  77, 6.033, 14.731

71, 14.149, 15.709

83, 1.540, 194.455

66, 22.810, 16.858

88, 8.590, 193.552

61, 31.958, 18.300

94, 15.162,
193.013

56, 41.463, 20.140

97, 17.349,
198.355

52, 51.107, 22.498

48, 60.594, 25.489

45, 69.586, 29.156

43, 77.691, 33.305

42, 84.210, 37.193

Harmonies

Complementary

The Complementary color scheme is a pair of colors which are on the opposite of each other on the color wheel.



77, 6.033, 14.731



80, 5.772, 193.782

Rectangle

The Rectangle color scheme consists of four colors that form a rectangle on the color wheel.



77, 6.033, 14.731



77, 6.033, 64.731



77, 6.033, 194.731



77, 6.033, 244.731

Sweetspot

The Sweet Spot groups the original color and five complimentary colors.



77, 6.031, 14.748



99, 1.804, 14.025



77, 10.218, 323.015



53, 1.025, 13.998



0, 0.000, 0.000



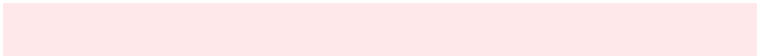
53, 0.007, 296.813

Same Dimension

The Same Dimension uses a secret algorithm to generate beautiful new colors.



77, 6.031, 14.748



94, 8.317, 14.861



79, 5.009, 66.922



40, 4.378, 14.886



34, 73.062, 37.253



4, 17.949, 16.337

Inverse Universe

The Inverse Universe completely reimagines the original color for something new.



77, 6.031, 14.748



94, 8.317, 14.861



78, 4.881, 248.886



40, 4.378, 14.886



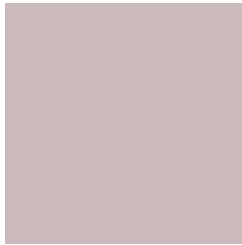
34, 73.062, 37.253



4, 17.949, 16.337

Previews

White Background



This preview shows how the CIELCh color 77, 6.033, 14.731 looks on a white background.

Color Contrast Check

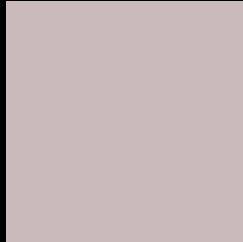
Large Text (above 18pt) WCAG AA × Fail

Any Text WCAG AA × Fail

Large Text (above 18pt) WCAG AAA × Fail

Any Text WCAG AAA × Fail

Black Background



This preview shows how the CIELCh color 77, 6.033, 14.731 looks on a black background.

Color Contrast Check

Large Text (above 18pt) WCAG AA ✓ Pass

Any Text WCAG AA ✓ Pass

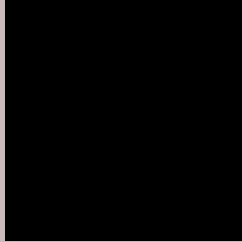
Large Text (above 18pt) WCAG AAA ✓ Pass

Any Text WCAG AAA ✓ Pass

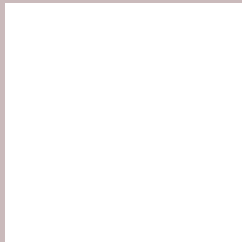
If you want to check with other color combinations, try the [Color Contrast Checker](#).

CIELCh 77, 6.033, 14.731

Background



This preview shows how black text looks on a background with the CIELCh color 77, 6.033, 14.731.



This preview shows how white text looks on a background with the CIELCh color 77, 6.033, 14.731.

Color Blindness Simulation

Color vision deficiency is a very complex topic, and I could not describe the different causes any better than Wikipedia does, so if you want to learn more, you should check out their [article about color blindness](#).

Dichromacy



Original Color

77, 6.033, 14.731

Protanopia

77, 1.856, 19.269

Deuteranopia

77, 9.663, 7.401



Tritanopia
77, 10.298, 333.417

Trichromacy



Original Color
77, 6.033, 14.731

Protanomaly
77, 3.357, 19.518

Deuteranomaly
77, 8.435, 9.104

Tritanomaly
77, 7.958, 342.725

Monochromacy



Original Color
77, 6.033, 14.731

Achromatopsia
77, 0.009, 296.813

Achromatomaly
77, 2.296, 5.872

CSS Examples

Text

The CSS property to change the color of the text to CIELCh 77, 6.033, 14.731 is called "color". The color property can be set on classes, ids or directly on the HTML element.

This example shows how text in the color `rgb(202, 186, 187)` looks like.

```
.text, #text, p{  
    color:rgb(202, 186, 187)  
}
```

If you want to add a text shadow in that color use the text-shadow property, you can generate a text shadow directly with our [CSS Text Shadow Generator](#).

Here you see how black text with a 4 pixel rgb(202, 186, 187) colored shadow looks like.

```
.shadow{ text-shadow: 4px 4px 2px rgb(202, 186, 187) }
```

Border

The CSS property to change the border of an element to CIELCh 77, 6.033, 14.731 is called "border". The border property can be set on classes, ids or directly on the HTML element.

This example shows the color as border, it can be applied via the CSS property "border" or "border-color".

```
.border, #border, table{ border:4px solid rgb(202, 186, 187) }
```

If only the border color should be changed use the property `border-color`.

```
.border{ border-color:rgb(202, 186, 187) }
```

If you want to add a box shadow in that color use:

Here you see how a box with a 4 pixel `rgb(202, 186, 187)` colored shadow looks like.

```
.boxshadow{ -moz-box-shadow:4px 4px 4px  
4px rgb(202, 186, 187); -webkit-box-  
shadow:4px 4px 4px 4px rgb(202, 186, 187);  
box-shadow:4px 4px 4px 4px rgb(202, 186,  
187) }
```

Background

The CSS property to change the background color of an element to CIELCh 77, 6.033, 14.731 is called "background". The background property can be set on classes, ids or directly on the HTML element.

```
.background, #background, body{  
background: rgb(202, 186, 187) }
```

If only the background color should be changed can be used:

```
.background{ background-color: rgb(202,  
186, 187) }
```

This example shows the color as background, it is applied via the CSS property "background".

To optimize and compress your CSS code, you can use our [online CSS compressor and optimizer](#) based on csstidy. If you want to create a linear or radial gradient as background or border, check our [CSS Gradient Generator](#).

Hey! You found this booklet interesting? Support Converting Colors with the new Membership Option!

The pro membership hides all ads, plus gives you double the colors in the color bucket, and more awesome pro features!

[Learn more, Memberships starting at \\$2.50/m!](#)

**Follow me
on Twitter!**

@ConvertingColor