

Converting Colors

CIELCh(77, 6.323, 19.833)

Have a look what the booklet for
CIELCh(77, 6.323, 19.833) contains.

CIELCh(77, 6.399, 19.844)	3
<i>Conversions</i>	4
<i>Details</i>	6
<i>Harmonies</i>	11
<i>Previews</i>	20
<i>Color Blindness Simulation</i>	23
<i>CSS Examples</i>	26

Color

CIELCh(77, 6.399, 19.844)

Conversions

Conversions Part 1

Format	Color
Hex	CBBABA
RGB	203, 186, 186
RGB Percent	80%, 73%, 73%
CMY	0.2028, 0.2695, 0.2695
CMYK	0.00, 0.08, 0.08, 0.20
HSL	0°, 14%, 76%
HSV	0°, 8%, 80%
XYZ	51.2190, 51.5317, 53.8597
YIQ	191.0830, 10.1320, 3.6040

Conversions

Conversions Part 2

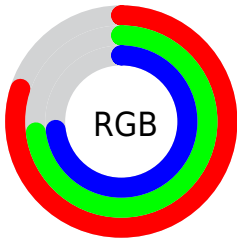
Format	Color
RYB	203, 186, 186
Decimal	13351610
CIELab	77.00, 6.02, 2.17
CIELCh	77, 6.399, 19.844
Yxy	51.5317, 0.3270, 0.3290
Android (android.graphics.Color)	4291541690 (0xFFCBBABA)
YUV	191.0830, -2.5059, 10.4512
Hunter-Lab	71.7856, 1.7348, 5.7655

Details

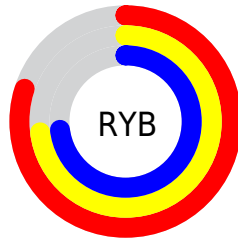
The CIELCh color $77, 6.399, 19.844$ is a light color, and the websafe version is hex `CCCCCC`. A complement of this color would be $81, 6.071, 199.061$, and the grayscale version is $77, 0.009, 296.813$.

A 20% lighter version of the original color is $96, 4.629, 19.576$, and $57, 6.431, 20.011$ is the 20% darker color. If you saturate the color by 10%, you get $71, 14.609, 20.692$, and if you desaturate by 10%, it is $83, 1.201, 199.805$.

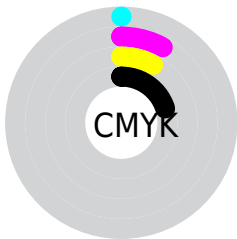
Distribution



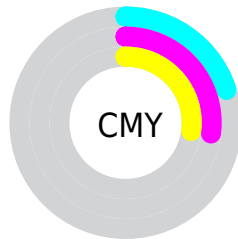
- Red (80%)
- Green (73%)
- Blue (73%)



- Red (80%)
- Yellow (73%)
- Blue (73%)



- Cyan (0%)
- Magenta (8%)
- Yellow (8%)
- Black (20%)



- Cyan (20%)
- Magenta (27%)
- Yellow (27%)

Brightness & Saturation Gradients

These gradients show how the CIELCh color 77, 6.399, 19.844 changes by changing the brightness by 10 percent. The first figure shows a shift by +10% for each color and the second figure -10%.

Similar to the brightness gradients but the following saturation gradients show a change of the CIELCh color 77, 6.399, 19.844 by changing the saturation by 10% instead.

 77, 6.399, 19.844

 77, 6.399, 19.844

 100, 6.399, 19.844

 67, 6.399, 19.844

 97, 6.399, 19.844

 57, 6.399, 19.844

 47, 6.399, 19.844

 37, 6.399, 19.844

 27, 6.399, 19.844

 17, 6.399, 19.844

 7, 6.399, 19.844

 0, 6.399, 19.844

 77, 6.399, 19.844

 77, 6.399, 19.844

71, 14.609, 20.692

83, 1.201, 199.805

66, 23.446, 21.721

89, 8.228, 198.930

61, 32.872, 23.053

94, 14.737,
198.521

56, 42.776, 24.793

97, 17.092,
198.372

52, 52.953, 27.050

48, 63.097, 29.905

45, 72.781, 33.306

43, 81.254, 36.834

42, 87.218, 39.561

Harmonies

Complementary

The Complementary color scheme is a pair of colors which are on the opposite of each other on the color wheel.



77, 6.399, 19.844



81, 6.071, 199.061

Rectangle

The Rectangle color scheme consists of four colors that form a rectangle on the color wheel.



77, 6.399, 19.844



77, 6.399, 69.844



77, 6.399, 199.844



77, 6.399, 249.844

Sweetspot

The Sweet Spot groups the original color and five complimentary colors.



77, 6.398, 19.861



98, 2.701, 19.361



77, 11.078, 324.875



52, 2.054, 19.462



0, 0.000, 0.000



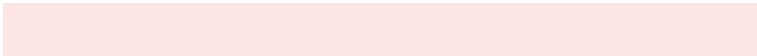
53, 0.007, 296.813

Same Dimension

The Same Dimension uses a secret algorithm to generate beautiful new colors.



77, 6.398, 19.861



93, 9.257, 20.001



79, 5.522, 74.340



40, 4.368, 19.943



34, 75.551, 39.826



4, 17.908, 19.416

Inverse Universe

The Inverse Universe completely reimagines the original color for something new.



81, 6.071, 199.061



98, 8.685, 198.952



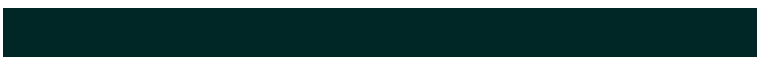
78, 5.420, 256.561



42, 4.118, 198.996



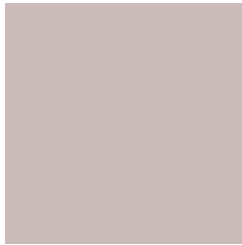
62, 36.289, 196.420



13, 13.510, 196.413

Previews

White Background



This preview shows how the CIELCh color 77, 6.399, 19.844 looks on a white background.

Color Contrast Check

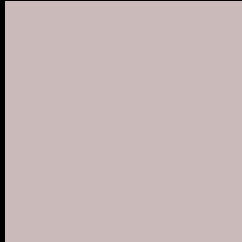
Large Text (above 18pt) WCAG AA × Fail

Any Text WCAG AA × Fail

Large Text (above 18pt) WCAG AAA × Fail

Any Text WCAG AAA × Fail

Black Background



This preview shows how the CIELCh color 77, 6.399, 19.844 looks on a black background.

Color Contrast Check

Large Text (above 18pt) WCAG AA ✓ Pass

Any Text WCAG AA ✓ Pass

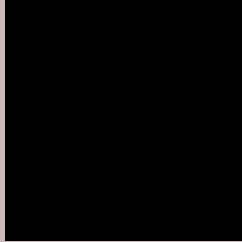
Large Text (above 18pt) WCAG AAA ✓ Pass

Any Text WCAG AAA ✓ Pass

If you want to check with other color combinations, try the [Color Contrast Checker](#).

CIELCh 77, 6.399, 19.844

Background



This preview shows how black text looks on a background with the CIELCh color 77, 6.399, 19.844.



This preview shows how white text looks on a background with the CIELCh color 77, 6.399, 19.844.

Color Blindness Simulation

Color vision deficiency is a very complex topic, and I could not describe the different causes any better than Wikipedia does, so if you want to learn more, you should check out their [article about color blindness](#).

Dichromacy



Original Color

77, 6.399, 19.844

Protanopia

77, 1.928, 35.390

Deuteranopia

77, 9.954, 10.939



Tritanopia
77, 11.197, 334.374

Trichromacy



Original Color
77, 6.399, 19.844

Protanomaly
77, 3.400, 28.566

Deuteranomaly
77, 8.744, 13.065

Tritanomaly
77, 8.570, 345.839

Monochromacy



Original Color
77, 6.399, 19.844

Achromatopsia
77, 0.009, 296.813

Achromatomaly
77, 2.229, 19.347

CSS Examples

Text

The CSS property to change the color of the text to CIELCh 77, 6.399, 19.844 is called "color". The color property can be set on classes, ids or directly on the HTML element.

This example shows how text in the color `rgb(203, 186, 186)` looks like.

```
.text, #text, p{  
    color:rgb(203, 186, 186)  
}
```

If you want to add a text shadow in that color use the text-shadow property, you can generate a text shadow directly with our [CSS Text Shadow Generator](#).

Here you see how black text with a 4 pixel rgb(203, 186, 186) colored shadow looks like.

```
.shadow{ text-shadow: 4px 4px 2px rgb(203, 186, 186) }
```

Border

The CSS property to change the border of an element to CIELCh 77, 6.399, 19.844 is called "border". The border property can be set on classes, ids or directly on the HTML element.

This example shows the color as border, it can be applied via the CSS property "border" or "border-color".

```
.border, #border, table{ border:4px solid rgb(203, 186, 186) }
```

If only the border color should be changed use the property `border-color`.

```
.border{ border-color:rgb(203, 186, 186) }
```

If you want to add a box shadow in that color use:

Here you see how a box with a 4 pixel `rgb(203, 186, 186)` colored shadow looks like.

```
.boxshadow{ -moz-box-shadow:4px 4px 4px  
4px rgb(203, 186, 186); -webkit-box-  
shadow:4px 4px 4px 4px rgb(203, 186, 186);  
box-shadow:4px 4px 4px 4px rgb(203, 186,  
186) }
```

Background

The CSS property to change the background color of an element to CIELCh 77, 6.399, 19.844 is called "background". The background property can be set on classes, ids or directly on the HTML element.

```
.background, #background, body{  
background: rgb(203, 186, 186) }
```

If only the background color should be changed can be used:

```
.background{ background-color: rgb(203,  
186, 186) }
```

This example shows the color as background, it is applied via the CSS property "background".

To optimize and compress your CSS code, you can use our [online CSS compressor and optimizer](#) based on csstidy. If you want to create a linear or radial gradient as background or border, check our [CSS Gradient Generator](#).

Hey! You found this booklet interesting? Support Converting Colors with the new Membership Option!

The pro membership hides all ads, plus gives you double the colors in the color bucket, and more awesome pro features!

[Learn more, Memberships starting at \\$2.50/m!](#)

**Follow me
on Twitter!**

@ConvertingColor