

Converting Colors

CIELCh(77, 68.736, 14.151)

Have a look what the booklet for
CIELCh(77, 68.736, 14.151) contains.

CIELCh(70, 49.991, 6.607)	3
<i>Conversions</i>	4
<i>Details</i>	6
<i>Harmonies</i>	11
<i>Previews</i>	20
<i>Color Blindness Simulation</i>	23
<i>CSS Examples</i>	26

Color

CIELCh(70, 49.991, 6.607)

Conversions

Conversions Part 1

Format	Color
Hex	FF85A3
RGB	255, 133, 163
RGB Percent	100%, 52%, 64%
CMY	0.0000, 0.4795, 0.3619
CMYK	0.00, 0.48, 0.36, 0.00
HSL	345°, 100%, 76%
HSV	345°, 48%, 100%
XYZ	56.4751, 40.7494, 39.4034
YIQ	172.8980, 63.0820, 35.1940

Conversions

Conversions Part 2

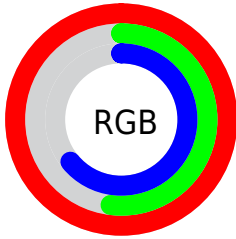
Format	Color
R_{YB}	255, 133, 163
Decimal	16745891
CIE _{Lab}	70.00, 49.66, 5.75
CIE _{LCh}	70, 49.991, 6.607
Yxy	40.7494, 0.4133, 0.2983
Android (android.graphics.Color)	4294935971 (0xFFFF85A3)
YUV	172.8980, -4.8797, 72.0035
Hunter-Lab	63.8353, 46.2075, 8.0869

Details

The CIELCh color **70, 49.991, 6.607** is a light color, and the websafe version is hex **FF6699**. A complement of this color would be **93, 41.531, 174.831**, and the grayscale version is **71, 0.009, 296.813**.

A 20% lighter version of the original color is **83, 28.469, 349.583**, and **50, 49.615, 6.645** is the 20% darker color. If you saturate the color by 10%, you get **65, 60.012, 8.845**, and if you desaturate by 10%, it is **76, 38.987, 4.539**.

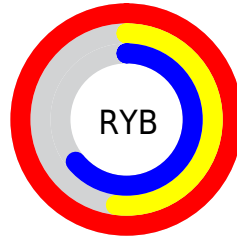
Distribution



Red (100%)

Green (52%)

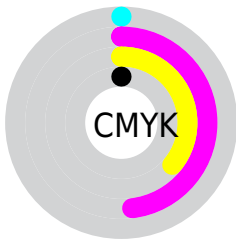
Blue (64%)



Red (100%)

Yellow (52%)

Blue (64%)

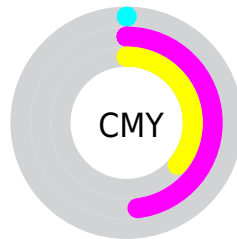


Cyan (0%)

Magenta (48%)

Yellow (36%)

Black (0%)



Cyan (0%)

Magenta (48%)

Yellow (36%)

Brightness & Saturation Gradients

These gradients show how the CIELCh color 70, 49.991, 6.607 changes by changing the brightness by 10 percent. The first figure shows a shift by +10% for each color and the second figure -10%.

Similar to the brightness gradients but the following saturation gradients show a change of the CIELCh color 70, 49.991, 6.607 by changing the saturation by 10% instead.

 70, 49.991, 6.607

 70, 49.991, 6.607

 100, 49.991, 6.607

 60, 49.991, 6.607

 90, 49.991, 6.607

 50, 49.991, 6.607

 40, 49.991, 6.607

 30, 49.991, 6.607

 20, 49.991, 6.607

 10, 49.991, 6.607

 0, 49.991, 6.607

 70, 49.991, 6.607

 70, 49.991, 6.607

 65, 60.012, 8.845

 76, 38.987, 4.539

■ 61, 69.485, 11.882

■ 82, 28.264, 2.982

■ 57, 77.695, 15.728

■ 88, 17.783, 1.683

■ 55, 84.463, 20.479

■ 95, 7.693, 0.551

■ 54, 90.027, 25.982

100, 0.012,
296.813

■ 54, 91.156, 27.099

Harmonies

Complementary

The Complementary color scheme is a pair of colors which are on the opposite of each other on the color wheel.



70, 49.991, 6.607



93, 41.531, 174.831

Rectangle

The Rectangle color scheme consists of four colors that form a rectangle on the color wheel.



70, 49.991, 6.607



70, 49.991, 56.607



70, 49.991, 186.607



70, 49.991, 236.607

Sweetspot

The Sweet Spot groups the original color and five complimentary colors.



70, 49.694, 6.450



91, 13.749, 1.223



69, 71.757, 319.320



47, 9.539, 1.472



0, 0.000, 0.000



53, 0.007, 296.813

Same Dimension

The Same Dimension uses a secret algorithm to generate beautiful new colors.



70, 49.694, 6.450



65, 60.065, 8.859



76, 42.930, 44.308



50, 5.525, 0.723



40, 72.834, 26.025



10, 31.726, 16.276

Inverse Universe

The Inverse Universe completely reimagines the original color for something new.



70, 49.694, 6.450



65, 60.065, 8.859



85, 30.389, 230.174



50, 5.525, 0.723



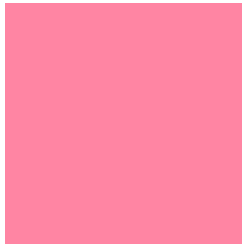
40, 72.834, 26.025



10, 31.726, 16.276

Previews

White Background



This preview shows how the CIELCh color 70, 49.991, 6.607 looks on a white background.

Color Contrast Check

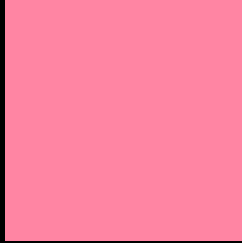
Large Text (above 18pt) WCAG AA × Fail

Any Text WCAG AA × Fail

Large Text (above 18pt) WCAG AAA × Fail

Any Text WCAG AAA × Fail

Black Background



This preview shows how the CIE LCh color 70, 49.991, 6.607 looks on a black background.

Color Contrast Check

Large Text (above 18pt) WCAG AA ✓ Pass

Any Text WCAG AA ✓ Pass

Large Text (above 18pt) WCAG AAA ✓ Pass

Any Text WCAG AAA ✓ Pass

If you want to check with other color combinations, try the [Color Contrast Checker](#).

CIELCh 70, 49.991, 6.607

Background



This preview shows how black text looks on a background with the CIELCh color 70, 49.991, 6.607.

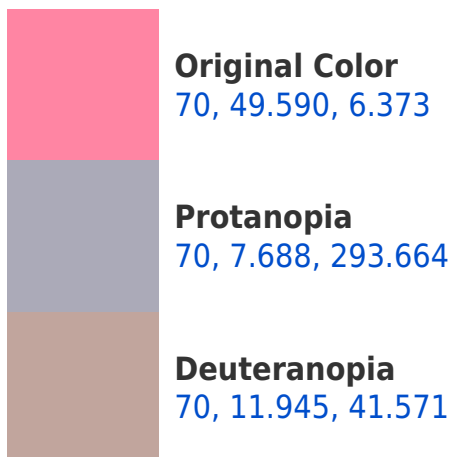


This preview shows how white text looks on a background with the CIELCh color 70, 49.991, 6.607.

Color Blindness Simulation

Color vision deficiency is a very complex topic, and I could not describe the different causes any better than Wikipedia does, so if you want to learn more, you should check out their [article about color blindness](#).

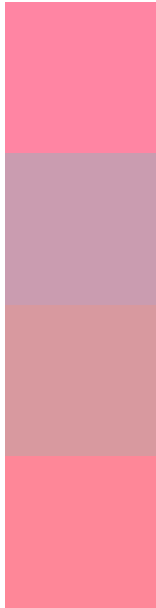
Dichromacy





Tritanopia
70, 48.039, 18.291

Trichromacy



Original Color
70, 49.590, 6.373

Protanomaly
69, 20.614, 349.474

Deuteranomaly
69, 25.227, 14.493

Tritanomaly
70, 48.163, 13.979

Monochromacy



Original Color
70, 49.590, 6.373

Achromatopsia
71, 0.009, 296.813

Achromatomaly
69, 18.404, 2.221

CSS Examples

Text

The CSS property to change the color of the text to CIELCh 70, 49.991, 6.607 is called "color". The color property can be set on classes, ids or directly on the HTML element.

This example shows how text in the color `rgb(255, 133, 163)` looks like.

```
.text, #text, p{  
    color:rgb(255, 133, 163)  
}
```

If you want to add a text shadow in that color use the text-shadow property, you can generate a text shadow directly with our [CSS Text Shadow Generator](#).

Here you see how black text with a 4 pixel rgb(255, 133, 163) colored shadow looks like.

```
.shadow{ text-shadow: 4px 4px 2px rgb(255, 133, 163) }
```

Border

The CSS property to change the border of an element to CIELCh 70, 49.991, 6.607 is called "border". The border property can be set on classes, ids or directly on the HTML element.

This example shows the color as border, it can be applied via the CSS property "border" or "border-color".

```
.border, #border, table{ border:4px solid rgb(255, 133, 163) }
```

If only the border color should be changed use the property `border-color`.

```
.border{ border-color:rgb(255, 133, 163) }
```

If you want to add a box shadow in that color use:

Here you see how a box with a 4 pixel `rgb(255, 133, 163)` colored shadow looks like.

```
.boxshadow{ -moz-box-shadow:4px 4px 4px  
4px rgb(255, 133, 163); -webkit-box-  
shadow:4px 4px 4px 4px rgb(255, 133, 163);  
box-shadow:4px 4px 4px 4px rgb(255, 133,  
163) }
```

Background

The CSS property to change the background color of an element to CIELCh 70, 49.991, 6.607 is called "background". The background property can be set on classes, ids or directly on the HTML element.

```
.background, #background, body{  
background: rgb(255, 133, 163) }
```

If only the background color should be changed can be used:

```
.background{ background-color: rgb(255,  
133, 163) }
```

This example shows the color as background, it is applied via the CSS property "background".

To optimize and compress your CSS code, you can use our [online CSS compressor and optimizer](#) based on csstidy. If you want to create a linear or radial gradient as background or border, check our [CSS Gradient Generator](#).

Hey! You found this booklet interesting? Support Converting Colors with the new Membership Option!

The pro membership hides all ads, plus gives you double the colors in the color bucket, and more awesome pro features!

[Learn more, Memberships starting at \\$2.50/m!](#)

**Follow me
on Twitter!**

@ConvertingColor