

Converting Colors

CIELCh(77, 7.098, 72.013)

Have a look what the booklet for
CIELCh(77, 7.098, 72.013) contains.

CIELCh(77, 7.029, 69.027)	3
<i>Conversions</i>	4
<i>Details</i>	6
<i>Harmonies</i>	11
<i>Previews</i>	20
<i>Color Blindness Simulation</i>	23
<i>CSS Examples</i>	26

Color

CIELCh(77, 7.029, 69.027)

Conversions

Conversions Part 1

Format	Color
Hex	C8BCB2
RGB	200, 188, 178
RGB Percent	78%, 74%, 70%
CMY	0.2152, 0.2623, 0.3015
CMYK	0.00, 0.06, 0.11, 0.22
HSL	27°, 17%, 74%
HSV	27°, 11%, 78%
XYZ	49.9074, 51.5317, 49.4974
YIQ	190.4480, 10.3620, -0.5660

Conversions

Conversions Part 2

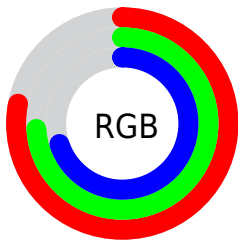
Format	Color
RYB	200, 196, 178
Decimal	13155506
CIELab	77.00, 2.52, 6.56
CIELCh	77, 7.029, 69.027
Yxy	51.5317, 0.3307, 0.3414
Android (android.graphics.Color)	4291345586 (0xFFC8BCB2)
YUV	190.4480, -6.1369, 8.3771
Hunter-Lab	71.7856, -1.5266, 9.3685

Details

The CIELCh color $77, 7.029, 69.027$ is a light color, and the websafe version is hex `CCCCCC`. A complement of this color would be $76, 6.792, 251.791$, and the grayscale version is $77, 0.009, 296.813$.

A 20% lighter version of the original color is $97, 6.439, 71.741$, and $57, 7.248, 71.093$ is the 20% darker color. If you saturate the color by 10%, you get $74, 13.794, 67.922$, and if you desaturate by 10%, it is $80, 0.613, 69.590$.

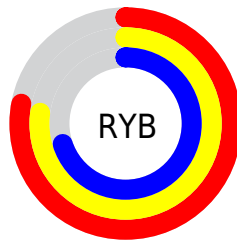
Distribution



Red (78%)

Green (74%)

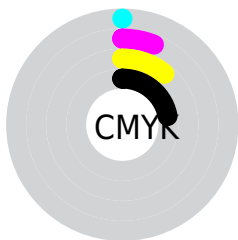
Blue (70%)



Red (78%)

Yellow (77%)

Blue (70%)

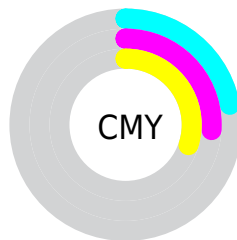


Cyan (0%)

Magenta (6%)

Yellow (11%)

Black (22%)



Cyan (22%)

Magenta (26%)

Yellow (30%)

Brightness & Saturation Gradients

These gradients show how the CIELCh color 77, 7.029, 69.027 changes by changing the brightness by 10 percent. The first figure shows a shift by +10% for each color and the second figure -10%.

Similar to the brightness gradients but the following saturation gradients show a change of the CIELCh color 77, 7.029, 69.027 by changing the saturation by 10% instead.

 77, 7.029, 69.027

 77, 7.029, 69.027

 100, 7.029, 69.027

 67, 7.029, 69.027

 97, 7.029, 69.027

 57, 7.029, 69.027

 47, 7.029, 69.027

 37, 7.029, 69.027

 27, 7.029, 69.027

 17, 7.029, 69.027

 7, 7.029, 69.027

 0, 7.029, 69.027

 77, 7.029, 69.027

 77, 7.029, 69.027

74, 13.794, 67.922

80, 0.613, 69.590

71, 20.936, 66.781

84, 5.488, 251.449

67, 28.471, 65.644

87, 11.308,
252.513

64, 36.383, 64.515

90, 15.662,
249.588

61, 44.599, 63.378

59, 52.921, 62.181

93, 15.184,
223.486

56, 60.920, 60.790

96, 17.594,
200.699

54, 67.787, 58.931

52, 72.592, 56.793

96, 18.064,
198.310

Harmonies

Complementary

The Complementary color scheme is a pair of colors which are on the opposite of each other on the color wheel.



77, 7.029, 69.027



76, 6.792, 251.791

Rectangle

The Rectangle color scheme consists of four colors that form a rectangle on the color wheel.



77, 7.029, 69.027



77, 7.029, 119.027



77, 7.029, 249.027



77, 7.029, 299.027

Sweetspot

The Sweet Spot groups the original color and five complimentary colors.



77, 7.029, 69.046



99, 2.282, 69.802



75, 10.503, 341.893



52, 1.735, 69.755



0, 0.000, 0.000



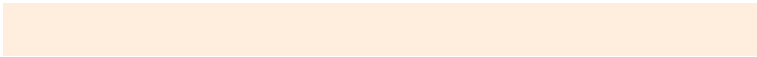
53, 0.007, 296.813

Same Dimension

The Same Dimension uses a secret algorithm to generate beautiful new colors.



77, 7.029, 69.046



95, 10.179, 68.804



80, 11.086, 107.003



40, 3.592, 69.222



42, 62.152, 57.398



7, 12.979, 52.215

Inverse Universe

The Inverse Universe completely reimagines the original color for something new.



76, 6.792, 251.791



94, 9.757, 252.088



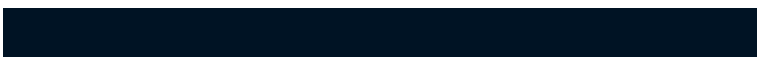
74, 11.341, 289.293



40, 3.491, 251.582



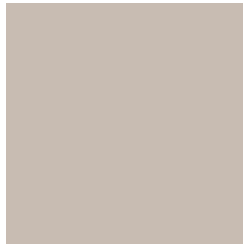
37, 46.775, 278.766



5, 13.298, 266.035

Previews

White Background



This preview shows how the CIELCh color 77, 7.029, 69.027 looks on a white background.

Color Contrast Check

Large Text (above 18pt) WCAG AA × Fail

Any Text WCAG AA × Fail

Large Text (above 18pt) WCAG AAA × Fail

Any Text WCAG AAA × Fail

Black Background



This preview shows how the CIELCh color 77, 7.029, 69.027 looks on a black background.

Color Contrast Check

Large Text (above 18pt) WCAG AA ✓ Pass

Any Text WCAG AA ✓ Pass

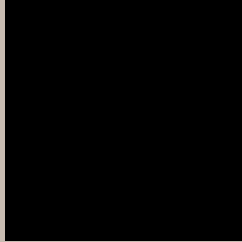
Large Text (above 18pt) WCAG AAA ✓ Pass

Any Text WCAG AAA ✓ Pass

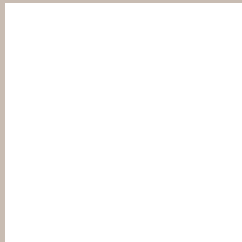
If you want to check with other color combinations, try the [Color Contrast Checker](#).

CIELCh 77, 7.029, 69.027

Background



This preview shows how black text looks on a background with the CIELCh color 77, 7.029, 69.027.

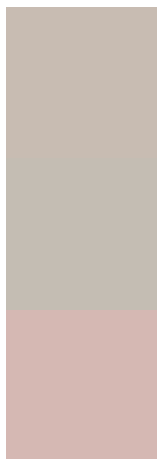


This preview shows how white text looks on a background with the CIELCh color 77, 7.029, 69.027.

Color Blindness Simulation

Color vision deficiency is a very complex topic, and I could not describe the different causes any better than Wikipedia does, so if you want to learn more, you should check out their [article about color blindness](#).

Dichromacy



Original Color

77, 7.029, 69.027

Protanopia

77, 5.957, 83.194

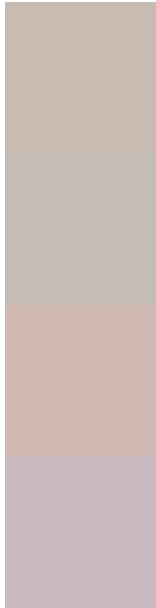
Deuteranopia

77, 11.483, 33.631



Tritanopia
77, 10.051, 331.845

Trichromacy



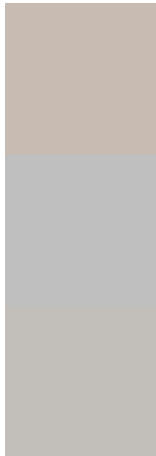
Original Color
77, 7.029, 69.027

Protanomaly
77, 6.136, 79.992

Deuteranomaly
77, 9.386, 39.942

Tritanomaly
77, 6.553, 355.768

Monochromacy



Original Color
77, 7.029, 69.027

Achromatopsia
77, 0.009, 296.813

Achromatomaly
77, 2.593, 74.786

CSS Examples

Text

The CSS property to change the color of the text to CIELCh 77, 7.029, 69.027 is called "color". The color property can be set on classes, ids or directly on the HTML element.

This example shows how text in the color `rgb(200, 188, 178)` looks like.

```
.text, #text, p{  
    color:rgb(200, 188, 178)  
}
```

If you want to add a text shadow in that color use the text-shadow property, you can generate a text shadow directly with our [CSS Text Shadow Generator](#).

Here you see how black text with a 4 pixel rgb(200, 188, 178) colored shadow looks like.

```
.shadow{ text-shadow: 4px 4px 2px rgb(200, 188, 178) }
```

Border

The CSS property to change the border of an element to CIELCh 77, 7.029, 69.027 is called "border". The border property can be set on classes, ids or directly on the HTML element.

This example shows the color as border, it can be applied via the CSS property "border" or "border-color".

```
.border, #border, table{ border:4px solid rgb(200, 188, 178) }
```

If only the border color should be changed use the property border-color.

```
.border{ border-color:rgb(200, 188, 178) }
```

If you want to add a box shadow in that color use:

Here you see how a box with a 4 pixel rgb(200, 188, 178) colored shadow looks like.

```
.boxshadow{ -moz-box-shadow:4px 4px 4px  
4px rgb(200, 188, 178); -webkit-box-  
shadow:4px 4px 4px 4px rgb(200, 188, 178);  
box-shadow:4px 4px 4px 4px rgb(200, 188,  
178) }
```

Background

The CSS property to change the background color of an element to CIELCh 77, 7.029, 69.027 is called "background". The background property can be set on classes, ids or directly on the HTML element.

```
.background, #background, body{  
background: rgb(200, 188, 178) }
```

If only the background color should be changed can be used:

```
.background{ background-color: rgb(200,  
188, 178) }
```

This example shows the color as background, it is applied via the CSS property "background".

To optimize and compress your CSS code, you can use our [online CSS compressor and optimizer](#) based on csstidy. If you want to create a linear or radial gradient as background or border, check our [CSS Gradient Generator](#).

Hey! You found this booklet interesting? Support Converting Colors with the new Membership Option!

The pro membership hides all ads, plus gives you double the colors in the color bucket, and more awesome pro features!

[Learn more, Memberships starting at \\$2.50/m!](#)

**Follow me
on Twitter!**

@ConvertingColor