

Converting Colors

CIELCh(77, 7.324, 20.693)

Have a look what the booklet for
CIELCh(77, 7.324, 20.693) contains.

CIELCh(77, 7.164, 19.915)	3
<i>Conversions</i>	4
<i>Details</i>	6
<i>Harmonies</i>	11
<i>Previews</i>	20
<i>Color Blindness Simulation</i>	23
<i>CSS Examples</i>	26

Color

CIELCh(77, 7.164, 19.915)

Conversions

Conversions Part 1

Format	Color
Hex	CDBABA
RGB	205, 186, 186
RGB Percent	80%, 73%, 73%
CMY	0.1968, 0.2713, 0.2713
CMYK	0.00, 0.09, 0.09, 0.20
HSL	0°, 16%, 77%
HSV	0°, 9%, 80%
XYZ	51.4901, 51.5317, 53.5864
YIQ	191.6810, 11.3240, 4.0280

Conversions

Conversions Part 2

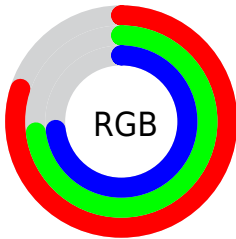
Format	Color
R _Y B	205, 186, 186
Decimal	13482682
CIE Lab	77.00, 6.74, 2.44
CIE LCh	77, 7.164, 19.915
Yxy	51.5317, 0.3288, 0.3290
Android (android.graphics.Color)	4291672762 (0xFFCDBABA)
YUV	191.6810, -2.8007, 11.6808
Hunter-Lab	71.7856, 2.4088, 5.9913

Details

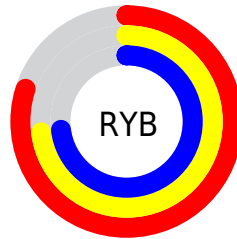
The CIELCh color **77, 7.164, 19.915** is a light color, and the websafe version is hex **CCCCCC**. A complement of this color would be **81, 6.757, 199.000**, and the grayscale version is **78, 0.009, 296.813**.

A 20% lighter version of the original color is **96, 4.629, 19.576**, and **57, 7.251, 20.105** is the 20% darker color. If you saturate the color by 10%, you get **71, 15.482, 20.773**, and if you desaturate by 10%, it is **83, 0.538, 200.431**.

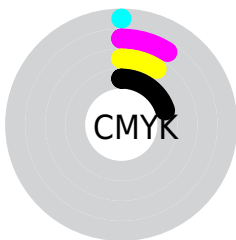
Distribution



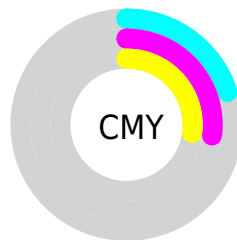
- Red (80%)
- Green (73%)
- Blue (73%)



- Red (80%)
- Yellow (73%)
- Blue (73%)



- Cyan (0%)
- Magenta (9%)
- Yellow (9%)
- Black (20%)



- Cyan (20%)
- Magenta (27%)
- Yellow (27%)

Brightness & Saturation Gradients

These gradients show how the CIELCh color 77, 7.164, 19.915 changes by changing the brightness by 10 percent. The first figure shows a shift by +10% for each color and the second figure -10%.

Similar to the brightness gradients but the following saturation gradients show a change of the CIELCh color 77, 7.164, 19.915 by changing the saturation by 10% instead.

 77, 7.164, 19.915  77, 7.164, 19.915

 100, 7.164, 19.915  67, 7.164, 19.915

 97, 7.164, 19.915  57, 7.164, 19.915

 47, 7.164, 19.915

 37, 7.164, 19.915

 27, 7.164, 19.915

 17, 7.164, 19.915

 7, 7.164, 19.915

 0, 7.164, 19.915

 77, 7.164, 19.915  77, 7.164, 19.915

71, 15.482, 20.773

83, 0.538, 200.431

66, 24.430, 21.827

89, 7.658, 198.971

61, 33.965, 23.194

94, 14.251,
198.550

56, 43.965, 24.978

97, 16.620,
198.402

52, 54.216, 27.289

48, 64.399, 30.204

45, 74.068, 33.646

44, 82.409, 37.142

43, 88.230, 39.804

Harmonies

Complementary

The Complementary color scheme is a pair of colors which are on the opposite of each other on the color wheel.



77, 7.164, 19.915



81, 6.757, 199.000

Rectangle

The Rectangle color scheme consists of four colors that form a rectangle on the color wheel.



77, 7.164, 19.915



77, 7.164, 69.915



77, 7.164, 199.915



77, 7.164, 249.915

Sweetspot

The Sweet Spot groups the original color and five complimentary colors.



77, 7.162, 19.930



98, 2.702, 19.358



78, 12.364, 324.927



52, 2.054, 19.459



0, 0.000, 0.000



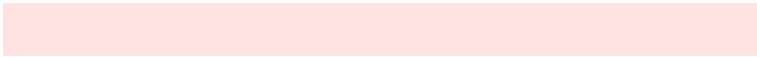
53, 0.007, 296.813

Same Dimension

The Same Dimension uses a secret algorithm to generate beautiful new colors.



77, 7.162, 19.930



92, 10.224, 20.078



79, 6.174, 74.235



40, 4.369, 19.940



34, 75.551, 39.825



4, 17.908, 19.414

Inverse Universe

The Inverse Universe completely reimagines the original color for something new.



81, 6.757, 199.000



98, 9.529, 198.889



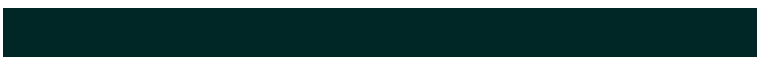
78, 6.043, 256.681



42, 4.118, 198.993



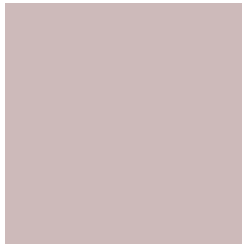
62, 36.291, 196.414



13, 13.511, 196.409

Previews

White Background



This preview shows how the CIELCh color 77, 7.164, 19.915 looks on a white background.

Color Contrast Check

Large Text (above 18pt) WCAG AA × Fail

Any Text WCAG AA × Fail

Large Text (above 18pt) WCAG AAA × Fail

Any Text WCAG AAA × Fail

Black Background



This preview shows how the CIELCh color 77, 7.164, 19.915 looks on a black background.

Color Contrast Check

Large Text (above 18pt) WCAG AA ✓ Pass

Any Text WCAG AA ✓ Pass

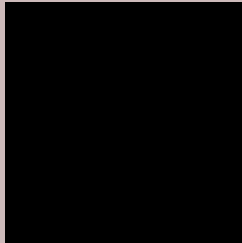
Large Text (above 18pt) WCAG AAA ✓ Pass

Any Text WCAG AAA ✓ Pass

If you want to check with other color combinations, try the [Color Contrast Checker](#).

CIELCh 77, 7.164, 19.915

Background



This preview shows how black text looks on a background with the CIELCh color 77, 7.164, 19.915.



This preview shows how white text looks on a background with the CIELCh color 77, 7.164, 19.915.

Color Blindness Simulation

Color vision deficiency is a very complex topic, and I could not describe the different causes any better than Wikipedia does, so if you want to learn more, you should check out their [article about color blindness](#).

Dichromacy



Original Color


77, 7.164, 19.915

Protanopia

77, 1.928, 35.390

Deuteranopia

77, 9.900, 13.996



Tritanopia
77, 11.366, 339.032

Trichromacy



Original Color
77, 7.164, 19.915

Protanomaly
77, 3.773, 27.706

Deuteranomaly
77, 8.711, 16.554

Tritanomaly
77, 9.197, 348.550

Monochromacy



Original Color
77, 7.164, 19.915

Achromatopsia
78, 0.009, 296.813

Achromatomaly
78, 2.601, 19.409

CSS Examples

Text

The CSS property to change the color of the text to CIELCh 77, 7.164, 19.915 is called "color". The color property can be set on classes, ids or directly on the HTML element.

This example shows how text in the color `rgb(205, 186, 186)` looks like.

```
.text, #text, p{  
    color:rgb(205, 186, 186)  
}
```

If you want to add a text shadow in that color use the text-shadow property, you can generate a text shadow directly with our [CSS Text Shadow Generator](#).

Here you see how black text with a 4 pixel rgb(205, 186, 186) colored shadow looks like.

```
.shadow{ text-shadow: 4px 4px 2px rgb(205, 186, 186) }
```

Border

The CSS property to change the border of an element to CIELCh 77, 7.164, 19.915 is called "border". The border property can be set on classes, ids or directly on the HTML element.

This example shows the color as border, it can be applied via the CSS property "border" or "border-color".

```
.border, #border, table{ border:4px solid rgb(205, 186, 186) }
```

If only the border color should be changed use the property `border-color`.

```
.border{ border-color:rgb(205, 186, 186) }
```

If you want to add a box shadow in that color use:

Here you see how a box with a 4 pixel `rgb(205, 186, 186)` colored shadow looks like.

```
.boxshadow{ -moz-box-shadow:4px 4px 4px  
4px rgb(205, 186, 186); -webkit-box-  
shadow:4px 4px 4px 4px rgb(205, 186, 186);  
box-shadow:4px 4px 4px 4px rgb(205, 186,  
186) }
```

Background

The CSS property to change the background color of an element to CIELCh 77, 7.164, 19.915 is called "background". The background property can be set on classes, ids or directly on the HTML element.

```
.background, #background, body{  
background: rgb(205, 186, 186) }
```

If only the background color should be changed can be used:

```
.background{ background-color: rgb(205,  
186, 186) }
```

This example shows the color as background, it is applied via the CSS property "background".

To optimize and compress your CSS code, you can use our [online CSS compressor and optimizer](#) based on csstidy. If you want to create a linear or radial gradient as background or border, check our [CSS Gradient Generator](#).

Hey! You found this booklet interesting? Support Converting Colors with the new Membership Option!

The pro membership hides all ads, plus gives you double the colors in the color bucket, and more awesome pro features!

[Learn more, Memberships starting at \\$2.50/m!](#)

**Follow me
on Twitter!**

@ConvertingColor