

Converting Colors

CIELCh(77, 8.131, 44.825)

Have a look what the booklet for
CIELCh(77, 8.131, 44.825) contains.

CIELCh(77, 7.927, 43.695)	3
<i>Conversions</i>	4
<i>Details</i>	6
<i>Harmonies</i>	11
<i>Previews</i>	20
<i>Color Blindness Simulation</i>	23
<i>CSS Examples</i>	26

Color

CIELCh(77, 7.927, 43.695)

Conversions

Conversions Part 1

Format	Color
Hex	CDBAB4
RGB	205, 186, 180
RGB Percent	80%, 73%, 71%
CMY	0.1952, 0.2697, 0.2932
CMYK	0.00, 0.09, 0.12, 0.20
HSL	14°, 20%, 76%
HSV	14°, 12%, 80%
XYZ	51.1105, 51.5317, 50.5546
YIQ	190.9970, 13.2500, 2.1620

Conversions

Conversions Part 2

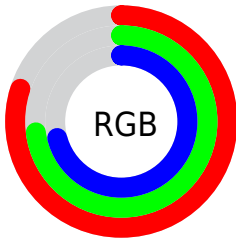
Format	Color
R _Y B	205, 188, 180
Decimal	13482676
CIE Lab	77.00, 5.73, 5.48
CIE LCh	77, 7.927, 43.695
Yxy	51.5317, 0.3336, 0.3364
Android (android.graphics.Color)	4291672756 (0xFFCDBAB4)
YUV	190.9970, -5.4215, 12.2806
Hunter-Lab	71.7856, 1.4649, 8.4953

Details

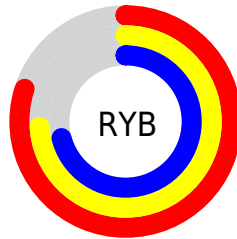
The CIELCh color $77, 7.927, 43.695$ is a light color, and the websafe version is hex `CCCCCC`. A complement of this color would be $79, 7.363, 224.907$, and the grayscale version is $77, 0.009, 296.813$.

A 20% lighter version of the original color is $96, 5.569, 52.870$, and $57, 8.128, 44.742$ is the 20% darker color. If you saturate the color by 10%, you get $73, 15.028, 43.470$, and if you desaturate by 10%, it is $81, 1.364, 43.745$.

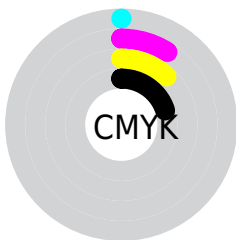
Distribution



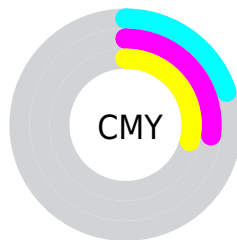
- Red (80%)
- Green (73%)
- Blue (71%)



- Red (80%)
- Yellow (74%)
- Blue (71%)



- Cyan (0%)
- Magenta (9%)
- Yellow (12%)
- Black (20%)



- Cyan (20%)
- Magenta (27%)
- Yellow (29%)


Brightness & Saturation Gradients

These gradients show how the CIELCh color 77, 7.927, 43.695 changes by changing the brightness by 10 percent. The first figure shows a shift by +10% for each color and the second figure -10%.

Similar to the brightness gradients but the following saturation gradients show a change of the CIELCh color 77, 7.927, 43.695 by changing the saturation by 10% instead.

 77, 7.927, 43.695  77, 7.927, 43.695

 100, 7.927, 43.695  67, 7.927, 43.695

 97, 7.927, 43.695  57, 7.927, 43.695

 47, 7.927, 43.695

 37, 7.927, 43.695

 27, 7.927, 43.695

 17, 7.927, 43.695

 7, 7.927, 43.695

 0, 7.927, 43.695

 77, 7.927, 43.695  77, 7.927, 43.695

73, 15.028, 43.470

81, 1.364, 43.745

68, 22.716, 43.321

86, 4.712, 224.681

64, 31.018, 43.312

91, 10.356,
225.087

60, 39.932, 43.472

95, 14.642,
211.579

56, 49.391, 43.816

53, 59.204, 44.313

97, 16.489,
198.411

50, 68.922, 44.816

48, 77.543, 44.923

46, 82.964, 44.672

Harmonies

Complementary

The Complementary color scheme is a pair of colors which are on the opposite of each other on the color wheel.



77, 7.927, 43.695



79, 7.363, 224.907

Rectangle

The Rectangle color scheme consists of four colors that form a rectangle on the color wheel.



77, 7.927, 43.695



77, 7.927, 93.695



77, 7.927, 223.695



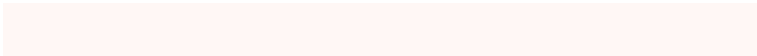
77, 7.927, 273.695

Sweetspot

The Sweet Spot groups the original color and five complimentary colors.



77, 7.926, 43.712



98, 3.003, 43.857



76, 13.856, 332.480



52, 2.141, 43.862



0, 0.000, 0.000



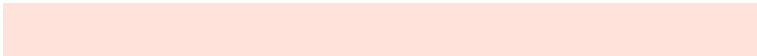
53, 0.007, 296.813

Same Dimension

The Same Dimension uses a secret algorithm to generate beautiful new colors.



77, 7.926, 43.712



92, 11.780, 43.634



80, 10.037, 94.622



41, 3.631, 43.784



37, 70.393, 45.103



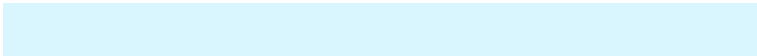
6, 15.698, 33.136

Inverse Universe

The Inverse Universe completely reimagines the original color for something new.



79, 7.363, 224.907



95, 10.727, 225.082



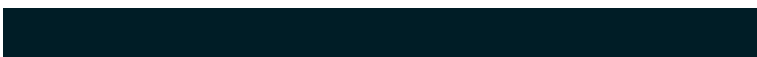
76, 10.107, 277.673



42, 3.434, 224.767



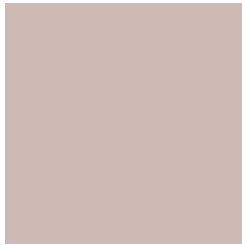
49, 32.736, 243.784



9, 11.771, 233.318

Previews

White Background



This preview shows how the CIELCh color 77, 7.927, 43.695 looks on a white background.

Color Contrast Check

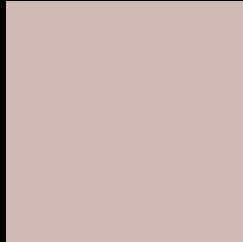
Large Text (above 18pt) WCAG AA × Fail

Any Text WCAG AA × Fail

Large Text (above 18pt) WCAG AAA × Fail

Any Text WCAG AAA × Fail

Black Background



This preview shows how the CIELCh color 77, 7.927, 43.695 looks on a black background.

Color Contrast Check

Large Text (above 18pt) WCAG AA ✓ Pass

Any Text WCAG AA ✓ Pass

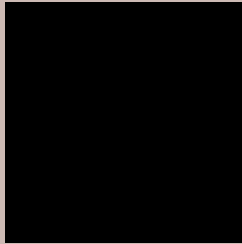
Large Text (above 18pt) WCAG AAA ✓ Pass

Any Text WCAG AAA ✓ Pass

If you want to check with other color combinations, try the [Color Contrast Checker](#).

CIELCh 77, 7.927, 43.695

Background



This preview shows how black text looks on a background with the CIELCh color 77, 7.927, 43.695.



This preview shows how white text looks on a background with the CIELCh color 77, 7.927, 43.695.

Color Blindness Simulation

Color vision deficiency is a very complex topic, and I could not describe the different causes any better than Wikipedia does, so if you want to learn more, you should check out their [article about color blindness](#).

Dichromacy



Original Color


77, 7.927, 43.695

Protanopia

77, 4.358, 78.567

Deuteranopia

77, 10.845, 28.683



Tritanopia
77, 11.646, 340.280

Trichromacy



Original Color
77, 7.927, 43.695

Protanomaly
77, 5.588, 61.583

Deuteranomaly
77, 9.798, 32.659

Tritanomaly
77, 9.043, 355.671

Monochromacy



Original Color
77, 7.927, 43.695

Achromatopsia
77, 0.009, 296.813

Achromatomaly
77, 2.813, 41.757

CSS Examples

Text

The CSS property to change the color of the text to CIELCh 77, 7.927, 43.695 is called "color". The color property can be set on classes, ids or directly on the HTML element.

This example shows how text in the color `rgb(205, 186, 180)` looks like.

```
.text, #text, p{  
    color:rgb(205, 186, 180)  
}
```

If you want to add a text shadow in that color use the text-shadow property, you can generate a text shadow directly with our [CSS Text Shadow Generator](#).

Here you see how black text with a 4 pixel rgb(205, 186, 180) colored shadow looks like.

```
.shadow{ text-shadow: 4px 4px 2px rgb(205, 186, 180) }
```

Border

The CSS property to change the border of an element to CIELCh 77, 7.927, 43.695 is called "border". The border property can be set on classes, ids or directly on the HTML element.

This example shows the color as border, it can be applied via the CSS property "border" or "border-color".

```
.border, #border, table{ border:4px solid rgb(205, 186, 180) }
```

If only the border color should be changed use the property border-color.

```
.border{ border-color:rgb(205, 186, 180) }
```

If you want to add a box shadow in that color use:

Here you see how a box with a 4 pixel rgb(205, 186, 180) colored shadow looks like.

```
.boxshadow{ -moz-box-shadow:4px 4px 4px  
4px rgb(205, 186, 180); -webkit-box-  
shadow:4px 4px 4px 4px rgb(205, 186, 180);  
box-shadow:4px 4px 4px 4px rgb(205, 186,  
180) }
```

Background

The CSS property to change the background color of an element to CIELCh 77, 7.927, 43.695 is called "background". The background property can be set on classes, ids or directly on the HTML element.

```
.background, #background, body{  
background: rgb(205, 186, 180) }
```

If only the background color should be changed can be used:

```
.background{ background-color: rgb(205,  
186, 180) }
```

This example shows the color as background, it is applied via the CSS property "background".

To optimize and compress your CSS code, you can use our [online CSS compressor and optimizer](#) based on csstidy. If you want to create a linear or radial gradient as background or border, check our [CSS Gradient Generator](#).

Hey! You found this booklet interesting? Support Converting Colors with the new Membership Option!

The pro membership hides all ads, plus gives you double the colors in the color bucket, and more awesome pro features!

[Learn more, Memberships starting at \\$2.50/m!](#)

**Follow me
on Twitter!**

@ConvertingColor