

Converting Colors

CIELCh(77, 8.675, 2.772)

Have a look what the booklet for
CIELCh(77, 8.675, 2.772) contains.

CIELCh(77, 8.678, 2.150)	3
<i>Conversions</i>	4
<i>Details</i>	6
<i>Harmonies</i>	11
<i>Previews</i>	20
<i>Color Blindness Simulation</i>	23
<i>CSS Examples</i>	26

Color

CIELCh(77, 8.678, 2.150)

Conversions

Conversions Part 1

Format	Color
Hex	CFB9BE
RGB	207, 185, 190
RGB Percent	81%, 73%, 75%
CMY	0.1892, 0.2755, 0.2559
CMYK	0.00, 0.11, 0.08, 0.19
HSL	346°, 19%, 77%
HSV	346°, 11%, 81%
XYZ	52.2274, 51.5317, 55.7682
YIQ	192.1480, 11.5070, 6.2190

Conversions

Conversions Part 2

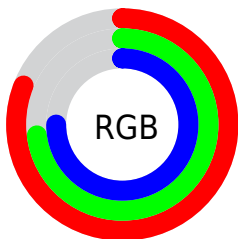
Format	Color
RYB	207, 185, 190
Decimal	13613502
CIELab	77.00, 8.67, 0.33
CIELCh	77, 8.678, 2.150
Yxy	51.5317, 0.3274, 0.3230
Android (android.graphics.Color)	4291803582 (0xFFCFB9BE)
YUV	192.1480, -1.0590, 13.0252
Hunter-Lab	71.7856, 4.2422, 4.1892

Details

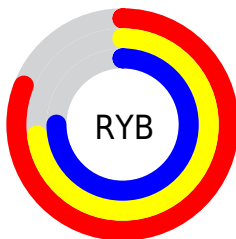
The CIELCh color $77, 8.678, 2.150$ is a light color, and the websafe version is hex `CCCCCC`. A complement of this color would be $81, 8.347, 180.299$, and the grayscale version is $78, 0.009, 296.813$.

A 20% lighter version of the original color is $96, 5.600, 352.532$, and $57, 8.857, 1.658$ is the 20% darker color. If you saturate the color by 10%, you get $71, 17.234, 3.307$, and if you desaturate by 10%, it is $83, 0.510, 0.253$.

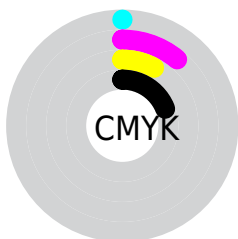
Distribution



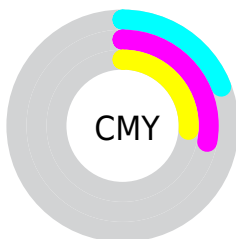
- Red (81%)
- Green (73%)
- Blue (75%)



- Red (81%)
- Yellow (73%)
- Blue (75%)



- Cyan (0%)
- Magenta (11%)
- Yellow (8%)
- Black (19%)



- Cyan (19%)
- Magenta (28%)
- Yellow (26%)

Brightness & Saturation Gradients

These gradients show how the CIELCh color 77, 8.678, 2.150 changes by changing the brightness by 10 percent. The first figure shows a shift by +10% for each color and the second figure -10%.

Similar to the brightness gradients but the following saturation gradients show a change of the CIELCh color 77, 8.678, 2.150 by changing the saturation by 10% instead.

 77, 8.678, 2.150

 77, 8.678, 2.150

 100, 8.678, 2.150

 67, 8.678, 2.150

 97, 8.678, 2.150

 57, 8.678, 2.150

 47, 8.678, 2.150

 37, 8.678, 2.150

 27, 8.678, 2.150

 17, 8.678, 2.150

 7, 8.678, 2.150

 0, 8.678, 2.150

 77, 8.678, 2.150

 77, 8.678, 2.150

71, 17.234, 3.307

83, 0.510, 0.253

66, 26.118, 4.648

88, 7.242, 180.501

61, 35.189, 6.268

94, 14.587,
179.734

56, 44.223, 8.268

97, 16.090,
195.994

52, 52.901, 10.781

49, 60.852, 13.962

97, 16.018,
198.441

46, 67.765, 17.961

44, 73.539, 22.821

43, 78.259, 27.809

Harmonies

Complementary

The Complementary color scheme is a pair of colors which are on the opposite of each other on the color wheel.



77, 8.678, 2.150



81, 8.347, 180.299

Rectangle

The Rectangle color scheme consists of four colors that form a rectangle on the color wheel.



77, 8.678, 2.150



77, 8.678, 52.150



77, 8.678, 182.150



77, 8.678, 232.150

Sweetspot

The Sweet Spot groups the original color and five complimentary colors.



77, 8.676, 2.159



98, 2.849, 1.267



77, 13.355, 318.247



52, 2.163, 1.387



0, 0.000, 0.000



53, 0.007, 296.813

Same Dimension

The Same Dimension uses a secret algorithm to generate beautiful new colors.



77, 8.676, 2.159



91, 12.649, 2.436



78, 6.852, 46.843



41, 4.657, 2.027



35, 66.685, 26.918



4, 20.275, 8.975

Inverse Universe

The Inverse Universe completely reimagines the original color for something new.



77, 8.676, 2.159



91, 12.649, 2.436



80, 6.444, 228.179



41, 4.657, 2.027



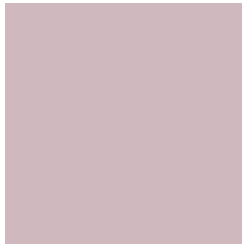
35, 66.685, 26.918



4, 20.275, 8.975

Previews

White Background



This preview shows how the CIELCh color 77, 8.678, 2.150 looks on a white background.

Color Contrast Check

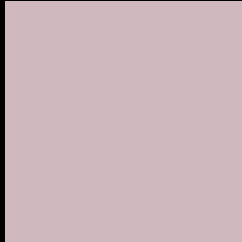
Large Text (above 18pt) WCAG AA × Fail

Any Text WCAG AA × Fail

Large Text (above 18pt) WCAG AAA × Fail

Any Text WCAG AAA × Fail

Black Background



This preview shows how the CIELCh color 77, 8.678, 2.150 looks on a black background.

Color Contrast Check

Large Text (above 18pt) WCAG AA ✓ Pass

Any Text WCAG AA ✓ Pass

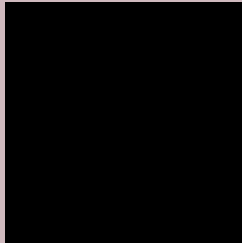
Large Text (above 18pt) WCAG AAA ✓ Pass

Any Text WCAG AAA ✓ Pass

If you want to check with other color combinations, try the [Color Contrast Checker](#).

CIELCh 77, 8.678, 2.150

Background



This preview shows how black text looks on a background with the CIELCh color 77, 8.678, 2.150.



This preview shows how white text looks on a background with the CIELCh color 77, 8.678, 2.150.

Color Blindness Simulation

Color vision deficiency is a very complex topic, and I could not describe the different causes any better than Wikipedia does, so if you want to learn more, you should check out their [article about color blindness](#).

Dichromacy



Original Color

77, 8.678, 2.150

Protanopia

77, 2.203, 332.329

Deuteranopia

77, 9.566, 0.580



Tritanopia
77, 12.278, 339.517

Trichromacy



Original Color

77, 8.678, 2.150

Protanomaly

77, 4.632, 352.110

Deuteranomaly

77, 9.566, 0.580

Tritanomaly

77, 10.710, 346.930

Monochromacy



Original Color

77, 8.678, 2.150

Achromatopsia

78, 0.009, 296.813

Achromatomaly

77, 3.166, 359.736

CSS Examples

Text

The CSS property to change the color of the text to CIELCh 77, 8.678, 2.150 is called "color". The color property can be set on classes, ids or directly on the HTML element.

This example shows how text in the color `rgb(207, 185, 190)` looks like.

```
.text, #text, p{  
    color:rgb(207, 185, 190)  
}
```

If you want to add a text shadow in that color use the text-shadow property, you can generate a text shadow directly with our [CSS Text Shadow Generator](#).

Here you see how black text with a 4 pixel rgb(207, 185, 190) colored shadow looks like.

```
.shadow{ text-shadow: 4px 4px 2px rgb(207, 185, 190) }
```

Border

The CSS property to change the border of an element to CIELCh 77, 8.678, 2.150 is called "border". The border property can be set on classes, ids or directly on the HTML element.

This example shows the color as border, it can be applied via the CSS property "border" or "border-color".

```
.border, #border, table{ border:4px solid rgb(207, 185, 190) }
```

If only the border color should be changed use the property `border-color`.

```
.border{ border-color:rgb(207, 185, 190) }
```

If you want to add a box shadow in that color use:

Here you see how a box with a 4 pixel `rgb(207, 185, 190)` colored shadow looks like.

```
.boxshadow{ -moz-box-shadow:4px 4px 4px  
4px rgb(207, 185, 190); -webkit-box-  
shadow:4px 4px 4px 4px rgb(207, 185, 190);  
box-shadow:4px 4px 4px 4px rgb(207, 185,  
190) }
```

Background

The CSS property to change the background color of an element to CIELCh 77, 8.678, 2.150 is called "background". The background property can be set on classes, ids or directly on the HTML element.

```
.background, #background, body{  
background: rgb(207, 185, 190) }
```

If only the background color should be changed can be used:

```
.background{ background-color: rgb(207,  
185, 190) }
```

This example shows the color as background, it is applied via the CSS property "background".

To optimize and compress your CSS code, you can use our [online CSS compressor and optimizer](#) based on csstidy. If you want to create a linear or radial gradient as background or border, check our [CSS Gradient Generator](#).

Hey! You found this booklet interesting? Support Converting Colors with the new Membership Option!

The pro membership hides all ads, plus gives you double the colors in the color bucket, and more awesome pro features!

[Learn more, Memberships starting at \\$2.50/m!](#)

**Follow me
on Twitter!**

@ConvertingColor