

Converting Colors

CIELCh(77, 9.001, 74.414)

Have a look what the booklet for
CIELCh(77, 9.001, 74.414) contains.

CIELCh(77, 9.000, 75.699)	3
<i>Conversions</i>	4
<i>Details</i>	6
<i>Harmonies</i>	11
<i>Previews</i>	20
<i>Color Blindness Simulation</i>	23
<i>CSS Examples</i>	26

Color

CIELCh(77, 9.000, 75.699)

Conversions

Conversions Part 1

Format	Color
Hex	C9BCAE
RGB	201, 188, 174
RGB Percent	79%, 74%, 68%
CMY	0.2112, 0.2621, 0.3171
CMYK	0.00, 0.06, 0.13, 0.21
HSL	31°, 20%, 74%
HSV	31°, 13%, 79%
XYZ	49.7988, 51.5317, 47.4429
YIQ	190.2910, 12.2420, -1.5980

Conversions

Conversions Part 2

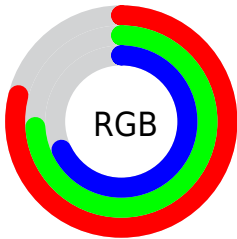
Format	Color
RYB	199, 201, 174
Decimal	13221038
CIELab	77.00, 2.22, 8.72
CIELCh	77, 9.000, 75.699
Yxy	51.5317, 0.3347, 0.3464
Android (android.graphics.Color)	4291411118 (0xFFC9BCAE)
YUV	190.2910, -8.0315, 9.3918
Hunter-Lab	71.7856, -1.7966, 11.0653

Details

The CIELCh color $77, 9.000, 75.699$ is a light color, and the websafe version is hex `CCCCCC`. A complement of this color would be $75, 8.740, 259.273$, and the grayscale version is $77, 0.009, 296.813$.

A 20% lighter version of the original color is $97, 8.612, 81.919$, and $57, 8.900, 75.461$ is the 20% darker color. If you saturate the color by 10%, you get $74, 16.055, 74.464$, and if you desaturate by 10%, it is $80, 2.242, 76.837$.

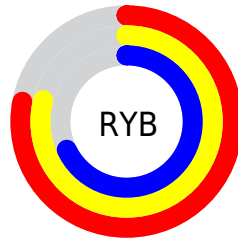
Distribution



Red (79%)

Green (74%)

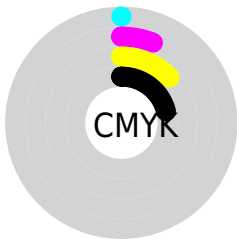
Blue (68%)



Red (78%)

Yellow (79%)

Blue (68%)

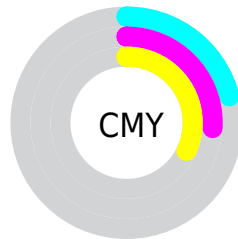


Cyan (0%)

Magenta (6%)

Yellow (13%)

Black (21%)



Cyan (21%)

Magenta (26%)

Yellow (32%)

Brightness & Saturation Gradients

These gradients show how the CIELCh color 77, 9.000, 75.699 changes by changing the brightness by 10 percent. The first figure shows a shift by +10% for each color and the second figure -10%.

Similar to the brightness gradients but the following saturation gradients show a change of the CIELCh color 77, 9.000, 75.699 by changing the saturation by 10% instead.

 77, 9.000, 75.699  77, 9.000, 75.699

 100, 9.000, 75.699  67, 9.000, 75.699

 97, 9.000, 75.699  57, 9.000, 75.699

 47, 9.000, 75.699

 37, 9.000, 75.699

 27, 9.000, 75.699

 17, 9.000, 75.699

 7, 9.000, 75.699

 0, 9.000, 75.699

 77, 9.000, 75.699  77, 9.000, 75.699

74, 16.055, 74.464

80, 2.242, 76.837

71, 23.419, 73.184

83, 4.243, 258.289

68, 31.089, 71.884

86, 10.482,
259.412

66, 39.019, 70.561

89, 16.501,
260.530

63, 47.085, 69.188

60, 55.012, 67.701

92, 14.820,
239.104

58, 62.260, 65.951

94, 15.387,
215.651

56, 67.947, 63.660

54, 70.852, 61.915

96, 17.748,
198.330

Harmonies

Complementary

The Complementary color scheme is a pair of colors which are on the opposite of each other on the color wheel.



77, 9.000, 75.699



75, 8.740, 259.273

Rectangle

The Rectangle color scheme consists of four colors that form a rectangle on the color wheel.



77, 9.000, 75.699



77, 9.000, 125.699



77, 9.000, 255.699



77, 9.000, 305.699

Sweetspot

The Sweet Spot groups the original color and five complimentary colors.



77, 9.001, 75.714



99, 3.182, 76.784



74, 12.351, 345.683



52, 2.266, 76.712



0, 0.000, 0.000



53, 0.007, 296.813

Same Dimension

The Same Dimension uses a secret algorithm to generate beautiful new colors.



77, 9.001, 75.714



94, 13.086, 75.368



80, 14.283, 109.579



40, 3.734, 76.203



45, 60.502, 62.528



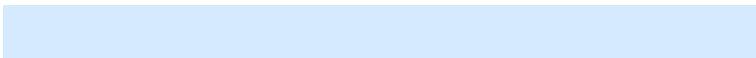
7, 12.973, 59.753

Inverse Universe

The Inverse Universe completely reimagines the original color for something new.



75, 8.740, 259.273



92, 12.616, 259.699



72, 14.727, 292.220



40, 3.664, 258.698



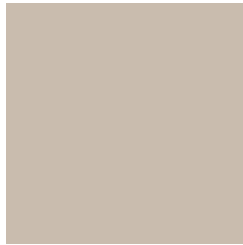
34, 53.168, 285.402



5, 14.322, 271.863

Previews

White Background



This preview shows how the CIELCh color 77, 9.000, 75.699 looks on a white background.

Color Contrast Check

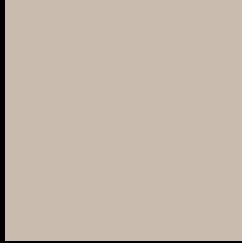
Large Text (above 18pt) WCAG AA × Fail

Any Text WCAG AA × Fail

Large Text (above 18pt) WCAG AAA × Fail

Any Text WCAG AAA × Fail

Black Background



This preview shows how the CIELCh color 77, 9.000, 75.699 looks on a black background.

Color Contrast Check

Large Text (above 18pt) WCAG AA ✓ Pass

Any Text WCAG AA ✓ Pass

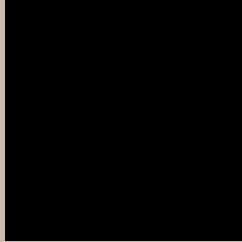
Large Text (above 18pt) WCAG AAA ✓ Pass

Any Text WCAG AAA ✓ Pass

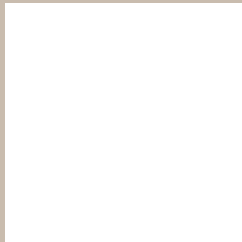
If you want to check with other color combinations, try the [Color Contrast Checker](#).

CIELCh 77, 9.000, 75.699

Background



This preview shows how black text looks on a background with the CIELCh color 77, 9.000, 75.699.



This preview shows how white text looks on a background with the CIELCh color 77, 9.000, 75.699.

Color Blindness Simulation

Color vision deficiency is a very complex topic, and I could not describe the different causes any better than Wikipedia does, so if you want to learn more, you should check out their [article about color blindness](#).

Dichromacy



Original Color

77, 9.000, 75.699

Protanopia

77, 8.078, 87.196

Deuteranopia

77, 12.793, 39.717



Tritanopia
77, 11.197, 334.374

Trichromacy



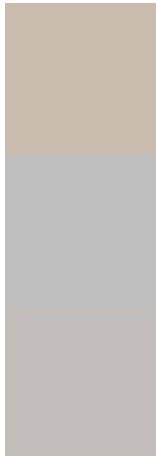
Original Color
77, 9.000, 75.699

Protanomaly
77, 8.400, 82.313

Deuteranomaly
77, 10.727, 49.797

Tritanomaly
77, 7.074, 2.328

Monochromacy



Original Color
77, 9.000, 75.699

Achromatopsia
77, 0.009, 296.813

Achromatomaly
77, 3.250, 74.690

CSS Examples

Text

The CSS property to change the color of the text to CIELCh 77, 9.000, 75.699 is called "color". The color property can be set on classes, ids or directly on the HTML element.

This example shows how text in the color `rgb(201, 188, 174)` looks like.

```
.text, #text, p{  
    color:rgb(201, 188, 174)  
}
```

If you want to add a text shadow in that color use the text-shadow property, you can generate a text shadow directly with our [CSS Text Shadow Generator](#).

Here you see how black text with a 4 pixel rgb(201, 188, 174) colored shadow looks like.

```
.shadow{ text-shadow: 4px 4px 2px rgb(201, 188, 174) }
```

Border

The CSS property to change the border of an element to CIELCh 77, 9.000, 75.699 is called "border". The border property can be set on classes, ids or directly on the HTML element.

This example shows the color as border, it can be applied via the CSS property "border" or "border-color".

```
.border, #border, table{ border:4px solid rgb(201, 188, 174) }
```

If only the border color should be changed use the property `border-color`.

```
.border{ border-color:rgb(201, 188, 174) }
```

If you want to add a box shadow in that color use:

Here you see how a box with a 4 pixel `rgb(201, 188, 174)` colored shadow looks like.

```
.boxshadow{ -moz-box-shadow:4px 4px 4px  
4px rgb(201, 188, 174); -webkit-box-  
shadow:4px 4px 4px 4px rgb(201, 188, 174);  
box-shadow:4px 4px 4px 4px rgb(201, 188,  
174) }
```

Background

The CSS property to change the background color of an element to CIELCh 77, 9.000, 75.699 is called "background". The background property can be set on classes, ids or directly on the HTML element.

```
.background, #background, body{  
background: rgb(201, 188, 174) }
```

If only the background color should be changed can be used:

```
.background{ background-color: rgb(201,  
188, 174) }
```

This example shows the color as background, it is applied via the CSS property "background".

To optimize and compress your CSS code, you can use our [online CSS compressor and optimizer](#) based on csstidy. If you want to create a linear or radial gradient as background or border, check our [CSS Gradient Generator](#).

Hey! You found this booklet interesting? Support Converting Colors with the new Membership Option!

The pro membership hides all ads, plus gives you double the colors in the color bucket, and more awesome pro features!

[Learn more, Memberships starting at \\$2.50/m!](#)

**Follow me
on Twitter!**

@ConvertingColor