

Converting Colors

CIELCh(77, 9.290, 6.840)

Have a look what the booklet for
CIELCh(77, 9.290, 6.840) contains.

CIELCh(77, 9.290, 6.840)	3
<i>Conversions</i>	4
<i>Details</i>	6
<i>Harmonies</i>	11
<i>Previews</i>	20
<i>Color Blindness Simulation</i>	23
<i>CSS Examples</i>	26

Color

CIELCh(77, 9.290, 6.840)

Conversions

Conversions Part 1

Format	Color
Hex	D0B8BC
RGB	208, 184, 188
RGB Percent	82%, 72%, 74%
CMY	0.1829, 0.2771, 0.2614
CMYK	0.00, 0.12, 0.10, 0.18
HSL	350°, 20%, 77%
HSV	350°, 12%, 82%
XYZ	52.4388, 51.5317, 54.9558
YIQ	191.6320, 13.0200, 6.3320

Conversions

Conversions Part 2

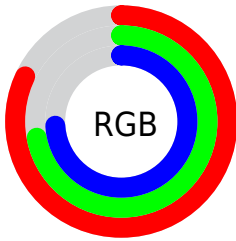
Format	Color
R _Y B	208, 184, 188
Decimal	13678780
CIE Lab	77.00, 9.22, 1.11
CIE LCh	77, 9.290, 6.840
Yxy	51.5317, 0.3300, 0.3242
Android (android.graphics.Color)	4291868860 (0xFFD0B8BC)
YUV	191.6320, -1.7906, 14.3547
Hunter-Lab	71.7856, 4.7680, 4.8602

Details

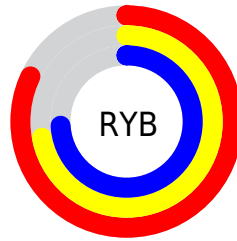
The CIELCh color $77, 9.290, 6.840$ is a light color, and the websafe version is hex `CCCCCC`. A complement of this color would be $82, 8.835, 184.904$, and the grayscale version is $78, 0.009, 296.813$.

A 20% lighter version of the original color is $96, 5.723, 358.764$, and $57, 9.117, 5.951$ is the 20% darker color. If you saturate the color by 10%, you get $71, 17.834, 7.991$, and if you desaturate by 10%, it is $83, 1.194, 5.521$.

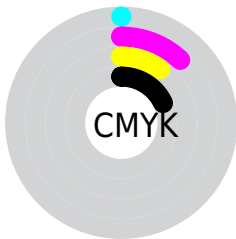
Distribution



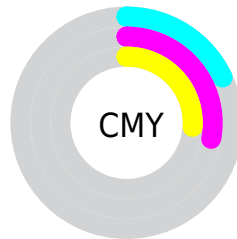
- Red (82%)
- Green (72%)
- Blue (74%)



- Red (82%)
- Yellow (72%)
- Blue (74%)



- Cyan (0%)
- Magenta (12%)
- Yellow (10%)
- Black (18%)



- Cyan (18%)
- Magenta (28%)
- Yellow (26%)

Brightness & Saturation Gradients

These gradients show how the CIELCh color 77, 9.290, 6.840 changes by changing the brightness by 10 percent. The first figure shows a shift by +10% for each color and the second figure -10%.

Similar to the brightness gradients but the following saturation gradients show a change of the CIELCh color 77, 9.290, 6.840 by changing the saturation by 10% instead.

77, 9.290, 6.840

77, 9.290, 6.840

100, 9.290, 6.840

67, 9.290, 6.840

97, 9.290, 6.840

57, 9.290, 6.840

47, 9.290, 6.840

37, 9.290, 6.840

27, 9.290, 6.840

17, 9.290, 6.840

7, 9.290, 6.840

0, 9.290, 6.840

77, 9.290, 6.840

77, 9.290, 6.840

71, 17.834, 7.991

83, 1.194, 5.521

66, 26.776, 9.349

89, 6.439, 185.252

61, 35.992, 11.015

94, 13.627,
184.513

56, 45.273, 13.098

97, 15.516,
198.473

52, 54.319, 15.735

49, 62.786, 19.071

46, 70.384, 23.208

44, 76.986, 28.072

44, 81.954, 32.305

Harmonies

Complementary

The Complementary color scheme is a pair of colors which are on the opposite of each other on the color wheel.



77, 9.290, 6.840



82, 8.835, 184.904

Rectangle

The Rectangle color scheme consists of four colors that form a rectangle on the color wheel.



77, 9.290, 6.840



77, 9.290, 56.840



77, 9.290, 186.840



77, 9.290, 236.840

Sweetspot

The Sweet Spot groups the original color and five complimentary colors.



77, 9.288, 6.850



98, 2.783, 5.878



77, 14.840, 320.306



52, 2.114, 5.998



0, 0.000, 0.000



53, 0.007, 296.813

Same Dimension

The Same Dimension uses a secret algorithm to generate beautiful new colors.



77, 9.288, 6.850



91, 13.397, 7.136



79, 7.409, 54.729



41, 4.560, 6.625



35, 69.340, 31.460



4, 20.147, 11.740

Inverse Universe

The Inverse Universe completely reimagines the original color for something new.



77, 9.288, 6.850



91, 13.397, 7.136



80, 6.992, 236.814



41, 4.560, 6.625



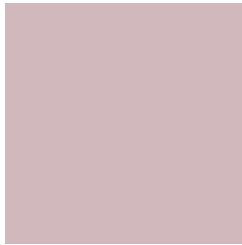
35, 69.340, 31.460



4, 20.147, 11.740

Previews

White Background



This preview shows how the CIELCh color 77, 9.290, 6.840 looks on a white background.

Color Contrast Check

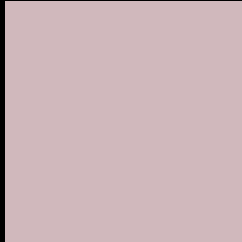
Large Text (above 18pt) WCAG AA × Fail

Any Text WCAG AA × Fail

Large Text (above 18pt) WCAG AAA × Fail

Any Text WCAG AAA × Fail

Black Background



This preview shows how the CIE LCh color 77, 9.290, 6.840 looks on a black background.

Color Contrast Check

Large Text (above 18pt) WCAG AA ✓ Pass

Any Text WCAG AA ✓ Pass

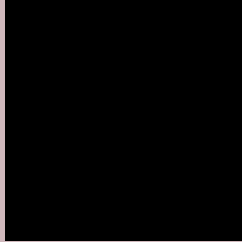
Large Text (above 18pt) WCAG AAA ✓ Pass

Any Text WCAG AAA ✓ Pass

If you want to check with other color combinations, try the [Color Contrast Checker](#).

CIELCh 77, 9.290, 6.840

Background



This preview shows how black text looks on a background with the CIELCh color 77, 9.290, 6.840.



This preview shows how white text looks on a background with the CIELCh color 77, 9.290, 6.840.

Color Blindness Simulation

Color vision deficiency is a very complex topic, and I could not describe the different causes any better than Wikipedia does, so if you want to learn more, you should check out their [article about color blindness](#).

Dichromacy



Original Color

77, 9.290, 6.840

Protanopia

77, 1.842, 343.604

Deuteranopia

77, 9.663, 7.401



Tritanopia
77, 12.529, 343.706

Trichromacy



Original Color

77, 9.290, 6.840

Protanomaly

77, 4.761, 359.974

Deuteranomaly

77, 9.663, 7.401

Tritanomaly

77, 11.354, 349.105

Monochromacy



Original Color

77, 9.290, 6.840

Achromatopsia

78, 0.009, 296.813

Achromatomaly

77, 3.520, 1.844

CSS Examples

Text

The CSS property to change the color of the text to CIELCh 77, 9.290, 6.840 is called "color". The color property can be set on classes, ids or directly on the HTML element.

This example shows how text in the color `rgb(208, 184, 188)` looks like.

```
.text, #text, p{  
    color:rgb(208, 184, 188)  
}
```

If you want to add a text shadow in that color use the text-shadow property, you can generate a text shadow directly with our [CSS Text Shadow Generator](#).

Here you see how black text with a 4 pixel rgb(208, 184, 188) colored shadow looks like.

```
.shadow{ text-shadow: 4px 4px 2px rgb(208, 184, 188) }
```

Border

The CSS property to change the border of an element to CIELCh 77, 9.290, 6.840 is called "border". The border property can be set on classes, ids or directly on the HTML element.

This example shows the color as border, it can be applied via the CSS property "border" or "border-color".

```
.border, #border, table{ border:4px solid rgb(208, 184, 188) }
```

If only the border color should be changed use the property border-color.

```
.border{ border-color:rgb(208, 184, 188) }
```

If you want to add a box shadow in that color use:

Here you see how a box with a 4 pixel rgb(208, 184, 188) colored shadow looks like.

```
.boxshadow{ -moz-box-shadow:4px 4px 4px  
4px rgb(208, 184, 188); -webkit-box-  
shadow:4px 4px 4px 4px rgb(208, 184, 188);  
box-shadow:4px 4px 4px 4px rgb(208, 184,  
188) }
```

Background

The CSS property to change the background color of an element to CIELCh 77, 9.290, 6.840 is called "background". The background property can be set on classes, ids or directly on the HTML element.

```
.background, #background, body{  
background: rgb(208, 184, 188) }
```

If only the background color should be changed can be used:

```
.background{ background-color: rgb(208,  
184, 188) }
```

This example shows the color as background, it is applied via the CSS property "background".

To optimize and compress your CSS code, you can use our [online CSS compressor and optimizer](#) based on csstidy. If you want to create a linear or radial gradient as background or border, check our [CSS Gradient Generator](#).

Hey! You found this booklet interesting? Support Converting Colors with the new Membership Option!

The pro membership hides all ads, plus gives you double the colors in the color bucket, and more awesome pro features!

[Learn more, Memberships starting at \\$2.50/m!](#)

**Follow me
on Twitter!**

@ConvertingColor