

Converting Colors

CIELCh(77, 9.755, 357.609)

Have a look what the booklet for
CIELCh(77, 9.755, 357.609) contains.

CIELCh(77, 9.746, 357.603)	3
<i>Conversions</i>	4
<i>Details</i>	6
<i>Harmonies</i>	11
<i>Previews</i>	20
<i>Color Blindness Simulation</i>	23
<i>CSS Examples</i>	26

Color

CIELCh(77, 9.746, 357.603)

Conversions

Conversions Part 1

Format	Color
Hex	D0B8BF
RGB	208, 184, 191
RGB Percent	82%, 72%, 75%
CMY	0.1838, 0.2779, 0.2505
CMYK	0.00, 0.12, 0.08, 0.18
HSL	343°, 20%, 77%
HSV	343°, 12%, 82%
XYZ	52.6361, 51.5317, 56.5383
YIQ	191.9740, 12.0570, 7.2650

Conversions

Conversions Part 2

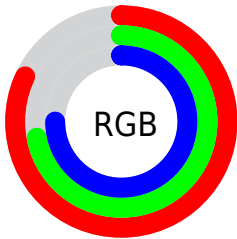
Format	Color
RYB	208, 184, 191
Decimal	13678783
CIELab	77.00, 9.74, -0.41
CIELCh	77, 9.746, 357.603
Yxy	51.5317, 0.3275, 0.3207
Android (android.graphics.Color)	4291868863 (0xFFD0B8BF)
YUV	191.9740, -0.4802, 14.0548
Hunter-Lab	71.7856, 5.2586, 3.5532

Details

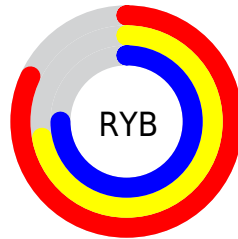
The CIELCh color $77, 9.746, 357.603$ is a light color, and the websafe version is hex `CCCCCC`. A complement of this color would be $82, 9.418, 175.532$, and the grayscale version is $78, 0.009, 296.813$.

A 20% lighter version of the original color is $96, 6.429, 345.912$, and $57, 9.627, 356.043$ is the 20% darker color. If you saturate the color by 10%, you get $71, 18.551, 358.758$, and if you desaturate by 10%, it is $83, 1.270, 356.298$.

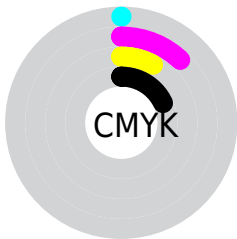
Distribution



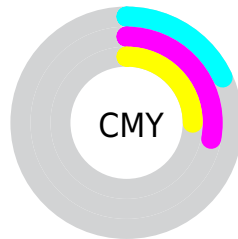
- Red (82%)
- Green (72%)
- Blue (75%)



- Red (82%)
- Yellow (72%)
- Blue (75%)



- Cyan (0%)
- Magenta (12%)
- Yellow (8%)
- Black (18%)



- Cyan (18%)
- Magenta (28%)
- Yellow (25%)

Brightness & Saturation Gradients

These gradients show how the CIELCh color 77, 9.746, 357.603 changes by changing the brightness by 10 percent. The first figure shows a shift by +10% for each color and the second figure -10%.

Similar to the brightness gradients but the following saturation gradients show a change of the CIELCh color 77, 9.746, 357.603 by changing the saturation by 10% instead.

■ 77, 9.746, 357.603

■ 77, 9.746, 357.603

■ 100, 9.746,
357.603

■ 67, 9.746, 357.603

■ 97, 9.746, 357.603

■ 57, 9.746, 357.603

■ 47, 9.746, 357.603

■ 37, 9.746, 357.603

■ 27, 9.746, 357.603

■ 17, 9.746, 357.603

■ 7, 9.746, 357.603

■ 0, 9.746, 357.603

■ 77, 9.746, 357.603

■ 77, 9.746, 357.603

71, 18.551,
358.758

83, 1.270, 356.298

66, 27.598, 0.088

88, 6.831, 175.906

61, 36.719, 1.678

94, 14.553,
175.108

56, 45.651, 3.623

97, 15.984,
189.391

52, 54.034, 6.051

97, 15.585,
198.469

49, 61.461, 9.122

46, 67.600, 13.006

45, 72.374, 17.808

44, 75.766, 22.374

Harmonies

Complementary

The Complementary color scheme is a pair of colors which are on the opposite of each other on the color wheel.



77, 9.746, 357.603



82, 9.418, 175.532

Rectangle

The Rectangle color scheme consists of four colors that form a rectangle on the color wheel.



77, 9.746, 357.603



77, 9.746, 47.603



77, 9.746, 177.603



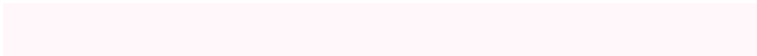
77, 9.746, 227.603

Sweetspot

The Sweet Spot groups the original color and five complimentary colors.



77, 9.744, 357.610



98, 2.938, 356.630



77, 14.317, 316.204



52, 2.231, 356.747



0, 0.000, 0.000



53, 0.007, 296.813

Same Dimension

The Same Dimension uses a secret algorithm to generate beautiful new colors.



77, 9.744, 357.610



91, 14.024, 357.900



78, 7.720, 39.200



41, 4.791, 357.381



35, 64.347, 21.435



4, 20.464, 5.975

Inverse Universe

The Inverse Universe completely reimagines the original color for something new.



77, 9.744, 357.610



91, 14.024, 357.900



81, 7.179, 219.899



41, 4.791, 357.381



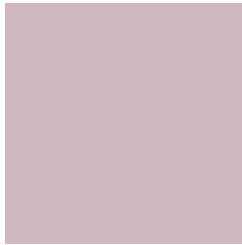
35, 64.347, 21.435



4, 20.464, 5.975

Previews

White Background



This preview shows how the CIELCh color 77, 9.746, 357.603 looks on a white background.

Color Contrast Check

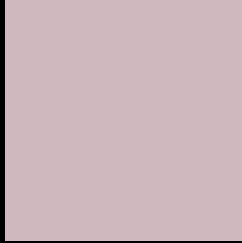
Large Text (above 18pt) WCAG AA × Fail

Any Text WCAG AA × Fail

Large Text (above 18pt) WCAG AAA × Fail

Any Text WCAG AAA × Fail

Black Background



This preview shows how the CIELCh color 77, 9.746, 357.603 looks on a black background.

Color Contrast Check

Large Text (above 18pt) WCAG AA ✓ Pass

Any Text WCAG AA ✓ Pass

Large Text (above 18pt) WCAG AAA ✓ Pass

Any Text WCAG AAA ✓ Pass

If you want to check with other color combinations, try the [Color Contrast Checker](#).

CIELCh 77, 9.746, 357.603

Background



This preview shows how black text looks on a background with the CIELCh color 77, 9.746, 357.603.



This preview shows how white text looks on a background with the CIELCh color 77, 9.746, 357.603.

Color Blindness Simulation

Color vision deficiency is a very complex topic, and I could not describe the different causes any better than Wikipedia does, so if you want to learn more, you should check out their [article about color blindness](#).

Dichromacy



Original Color

77, 9.746, 357.603

Protanopia

77, 2.922, 312.538

Deuteranopia

77, 9.746, 357.603



Tritanopia
77, 12.234, 342.617

Trichromacy



Original Color
77, 9.746, 357.603

Protanomaly
77, 5.215, 341.642

Deuteranomaly
77, 9.746, 357.603

Tritanomaly
77, 11.629, 346.832

Monochromacy



Original Color
77, 9.746, 357.603

Achromatopsia
78, 0.009, 296.813

Achromatomaly
77, 3.718, 353.982

CSS Examples

Text

The CSS property to change the color of the text to CIELCh 77, 9.746, 357.603 is called "color". The color property can be set on classes, ids or directly on the HTML element.

This example shows how text in the color `rgb(208, 184, 191)` looks like.

```
.text, #text, p{  
    color:rgb(208, 184, 191)  
}
```

If you want to add a text shadow in that color use the text-shadow property, you can generate a text shadow directly with our [CSS Text Shadow Generator](#).

Here you see how black text with a 4 pixel rgb(208, 184, 191) colored shadow looks like.

```
.shadow{ text-shadow: 4px 4px 2px rgb(208, 184, 191) }
```

Border

The CSS property to change the border of an element to CIELCh 77, 9.746, 357.603 is called "border". The border property can be set on classes, ids or directly on the HTML element.

This example shows the color as border, it can be applied via the CSS property "border" or "border-color".

```
.border, #border, table{ border:4px solid rgb(208, 184, 191) }
```

If only the border color should be changed use the property `border-color`.

```
.border{ border-color:rgb(208, 184, 191) }
```

If you want to add a box shadow in that color use:

Here you see how a box with a 4 pixel `rgb(208, 184, 191)` colored shadow looks like.

```
.boxshadow{ -moz-box-shadow:4px 4px 4px  
4px rgb(208, 184, 191); -webkit-box-  
shadow:4px 4px 4px 4px rgb(208, 184, 191);  
box-shadow:4px 4px 4px 4px rgb(208, 184,  
191) }
```

Background

The CSS property to change the background color of an element to CIELCh 77, 9.746, 357.603 is called "background". The background property can be set on classes, ids or directly on the HTML element.

```
.background, #background, body{  
background: rgb(208, 184, 191) }
```

If only the background color should be changed can be used:

```
.background{ background-color: rgb(208,  
184, 191) }
```

This example shows the color as background, it is applied via the CSS property "background".

To optimize and compress your CSS code, you can use our [online CSS compressor and optimizer](#) based on csstidy. If you want to create a linear or radial gradient as background or border, check our [CSS Gradient Generator](#).

Hey! You found this booklet interesting? Support Converting Colors with the new Membership Option!

The pro membership hides all ads, plus gives you double the colors in the color bucket, and more awesome pro features!

[Learn more, Memberships starting at \\$2.50/m!](#)

**Follow me
on Twitter!**

@ConvertingColor