

Converting Colors

CIELCh(78, 12.513, 65.845)

Have a look what the booklet for
CIELCh(78, 12.513, 65.845) contains.

CIELCh(78, 12.502, 66.092)	3
<i>Conversions</i>	4
<i>Details</i>	6
<i>Harmonies</i>	11
<i>Previews</i>	20
<i>Color Blindness Simulation</i>	23
<i>CSS Examples</i>	26

Color

CIELCh(78, 12.502, 66.092)

Conversions

Conversions Part 1

Format	Color
Hex	D3BDAC
RGB	211, 189, 172
RGB Percent	83%, 74%, 67%
CMY	0.1726, 0.2589, 0.3256
CMYK	0.00, 0.10, 0.18, 0.17
HSL	26°, 31%, 75%
HSV	26°, 18%, 83%
XYZ	52.4976, 53.2120, 46.5252
YIQ	193.6400, 18.5690, -0.6230

Conversions

Conversions Part 2

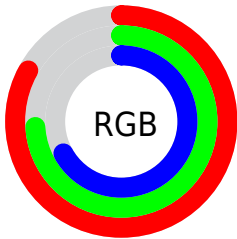
Format	Color
R _Y B	211, 202, 172
Decimal	13876652
CIE Lab	78.00, 5.07, 11.43
CIE LCh	78, 12.502, 66.092
Yxy	53.2120, 0.3448, 0.3495
Android (android.graphics.Color)	4292066732 (0xFFD3BDAC)
YUV	193.6400, -10.6685, 15.2247
Hunter-Lab	72.9466, 0.8050, 13.2475

Details

The CIELCh color **78, 12.502, 66.092** is a light color, and the websafe version is hex **CCCCCC**. A complement of this color would be **77, 11.680, 250.640**, and the grayscale version is **78, 0.009, 296.813**.

A 20% lighter version of the original color is **97, 9.853, 87.751**, and **58, 12.387, 66.597** is the 20% darker color. If you saturate the color by 10%, you get **75, 19.838, 65.013**, and if you desaturate by 10%, it is **82, 5.575, 67.171**.

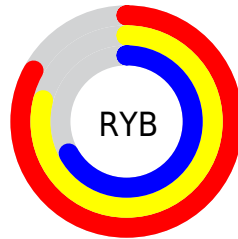
Distribution



Red (83%)

Green (74%)

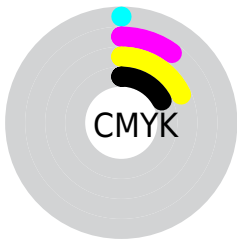
Blue (67%)



Red (83%)

Yellow (79%)

Blue (67%)

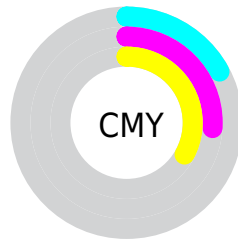


Cyan (0%)

Magenta (10%)

Yellow (18%)

Black (17%)



Cyan (17%)

Magenta (26%)

Yellow (33%)


Brightness & Saturation Gradients

These gradients show how the CIELCh color 78, 12.502, 66.092 changes by changing the brightness by 10 percent. The first figure shows a shift by +10% for each color and the second figure -10%.

Similar to the brightness gradients but the following saturation gradients show a change of the CIELCh color 78, 12.502, 66.092 by changing the saturation by 10% instead.

 78, 12.502, 66.092

 78, 12.502, 66.092

 100, 12.502,
66.092

 68, 12.502, 66.092

 98, 12.502, 66.092

 58, 12.502, 66.092

 48, 12.502, 66.092

 38, 12.502, 66.092

 28, 12.502, 66.092

 18, 12.502, 66.092

 8, 12.502, 66.092

 0, 12.502, 66.092

 78, 12.502, 66.092

 78, 12.502, 66.092

75, 19.838, 65.013

82, 5.575, 67.171

71, 27.607, 63.932

85, 0.977, 248.801

68, 35.808, 62.869

89, 7.195, 249.509

65, 44.387, 61.816

92, 12.598,
248.327

62, 53.184, 60.733

95, 12.858,
213.834

59, 61.826, 59.508

56, 69.562, 57.894

97, 14.689,
198.527

54, 75.451, 55.594

53, 76.317, 55.274

Harmonies

Complementary

The Complementary color scheme is a pair of colors which are on the opposite of each other on the color wheel.



78, 12.502, 66.092



77, 11.680, 250.640

Rectangle

The Rectangle color scheme consists of four colors that form a rectangle on the color wheel.



78, 12.502, 66.092



78, 12.502, 116.092



78, 12.502, 246.092



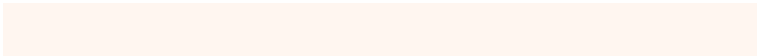
78, 12.502, 296.092

Sweetspot

The Sweet Spot groups the original color and five complimentary colors.



78, 12.502, 66.104



97, 4.566, 67.408



74, 18.770, 341.709



52, 3.034, 67.346



0, 0.000, 0.000



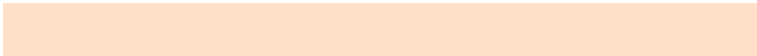
53, 0.007, 296.813

Same Dimension

The Same Dimension uses a secret algorithm to generate beautiful new colors.



78, 12.502, 66.104



91, 17.544, 65.694



83, 19.120, 105.474



42, 3.711, 67.077



43, 64.205, 55.914



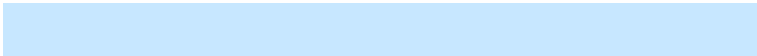
8, 15.855, 50.802

Inverse Universe

The Inverse Universe completely reimagines the original color for something new.



77, 11.680, 250.640



90, 16.138, 251.235



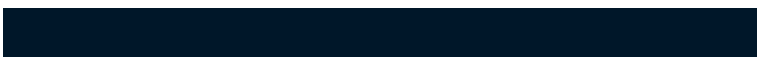
72, 19.829, 289.519



42, 3.596, 249.385



40, 46.164, 276.666



7, 14.847, 265.200

Previews

White Background



This preview shows how the CIELCh color 78, 12.502, 66.092 looks on a white background.

Color Contrast Check

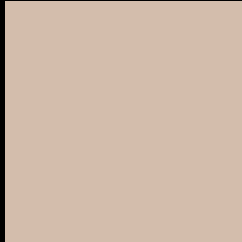
Large Text (above 18pt) WCAG AA × Fail

Any Text WCAG AA × Fail

Large Text (above 18pt) WCAG AAA × Fail

Any Text WCAG AAA × Fail

Black Background



This preview shows how the CIELCh color 78, 12.502, 66.092 looks on a black background.

Color Contrast Check

Large Text (above 18pt) WCAG AA ✓ Pass

Any Text WCAG AA ✓ Pass

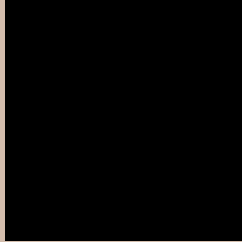
Large Text (above 18pt) WCAG AAA ✓ Pass

Any Text WCAG AAA ✓ Pass

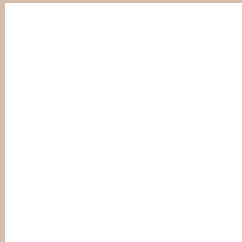
If you want to check with other color combinations, try the [Color Contrast Checker](#).

CIELCh 78, 12.502, 66.092

Background



This preview shows how black text looks on a background with the CIELCh color 78, 12.502, 66.092.



This preview shows how white text looks on a background with the CIELCh color 78, 12.502, 66.092.

Color Blindness Simulation

Color vision deficiency is a very complex topic, and I could not describe the different causes any better than Wikipedia does, so if you want to learn more, you should check out their [article about color blindness](#).

Dichromacy



Original Color

78, 12.502, 66.092

Protanopia

78, 10.194, 89.431

Deuteranopia

78, 14.700, 48.240



Tritanopia
78, 13.109, 345.733

Trichromacy



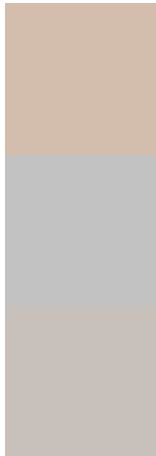
Original Color
78, 12.502, 66.092

Protanomaly
78, 11.021, 79.861

Deuteranomaly
78, 13.601, 53.234

Tritanomaly
78, 10.312, 11.308

Monochromacy



Original Color
78, 12.502, 66.092

Achromatopsia
78, 0.009, 296.813

Achromatomaly
78, 4.371, 66.457

CSS Examples

Text

The CSS property to change the color of the text to CIELCh 78, 12.502, 66.092 is called "color". The color property can be set on classes, ids or directly on the HTML element.

This example shows how text in the color `rgb(211, 189, 172)` looks like.

```
.text, #text, p{  
    color:rgb(211, 189, 172)  
}
```

If you want to add a text shadow in that color use the text-shadow property, you can generate a text shadow directly with our [CSS Text Shadow Generator](#).

Here you see how black text with a 4 pixel rgb(211, 189, 172) colored shadow looks like.

```
.shadow{ text-shadow: 4px 4px 2px rgb(211, 189, 172) }
```

Border

The CSS property to change the border of an element to CIELCh 78, 12.502, 66.092 is called "border". The border property can be set on classes, ids or directly on the HTML element.

This example shows the color as border, it can be applied via the CSS property "border" or "border-color".

```
.border, #border, table{ border:4px solid rgb(211, 189, 172) }
```

If only the border color should be changed use the property `border-color`.

```
.border{ border-color:rgb(211, 189, 172) }
```

If you want to add a box shadow in that color use:

Here you see how a box with a 4 pixel `rgb(211, 189, 172)` colored shadow looks like.

```
.boxshadow{ -moz-box-shadow:4px 4px 4px  
4px rgb(211, 189, 172); -webkit-box-  
shadow:4px 4px 4px 4px rgb(211, 189, 172);  
box-shadow:4px 4px 4px 4px rgb(211, 189,  
172) }
```

Background

The CSS property to change the background color of an element to CIELCh 78, 12.502, 66.092 is called "background". The background property can be set on classes, ids or directly on the HTML element.

```
.background, #background, body{  
background: rgb(211, 189, 172) }
```

If only the background color should be changed can be used:

```
.background{ background-color: rgb(211,  
189, 172) }
```

This example shows the color as background, it is applied via the CSS property "background".

To optimize and compress your CSS code, you can use our [online CSS compressor and optimizer](#) based on csstidy. If you want to create a linear or radial gradient as background or border, check our [CSS Gradient Generator](#).

Hey! You found this booklet
interesting? Support Converting
Colors with the new Membership
Option!

The pro membership hides all ads, plus gives you
double the colors in the color bucket, and more
awesome pro features!

[Learn more, Memberships starting at \\$2.50/m!](#)

**Follow me
on Twitter!**

@ConvertingColor