

Converting Colors

CIELCh(78, 13.266, 43.976)

Have a look what the booklet for
CIELCh(78, 13.266, 43.976) contains.

CIELCh(78, 13.196, 43.958)	3
<i>Conversions</i>	4
<i>Details</i>	6
<i>Harmonies</i>	11
<i>Previews</i>	20
<i>Color Blindness Simulation</i>	23
<i>CSS Examples</i>	26

Color

CIELCh(78, 13.196, 43.958)

Conversions

Conversions Part 1

Format	Color
Hex	D9BAB0
RGB	217, 186, 176
RGB Percent	85%, 73%, 69%
CMY	0.1477, 0.2693, 0.3085
CMYK	0.00, 0.14, 0.19, 0.15
HSL	15°, 35%, 77%
HSV	15°, 19%, 85%
XYZ	54.2177, 53.2120, 48.6599
YIQ	194.1290, 21.6860, 3.4620

Conversions

Conversions Part 2

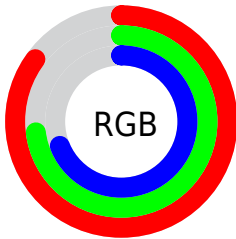
Format	Color
R _Y B	217, 189, 176
Decimal	14269104
CIE Lab	78.00, 9.50, 9.16
CIE LCh	78, 13.196, 43.958
Yxy	53.2120, 0.3473, 0.3409
Android (android.graphics.Color)	4292459184 (0xFFD9BAB0)
YUV	194.1290, -8.9376, 20.0579
Hunter-Lab	72.9466, 5.0141, 11.5125

Details

The CIELCh color **78, 13.196, 43.958** is a light color, and the websafe version is hex **FFCCCC**. A complement of this color would be **81, 11.721, 225.831**, and the grayscale version is **79, 0.010, 296.813**.

A 20% lighter version of the original color is **96, 6.921, 66.965**, and **58, 13.173, 43.093** is the 20% darker color. If you saturate the color by 10%, you get **73, 21.031, 43.762**, and if you desaturate by 10%, it is **83, 5.958, 44.244**.

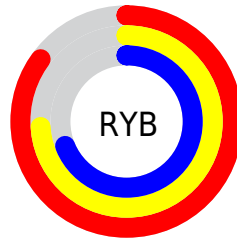
Distribution



Red (85%)

Green (73%)

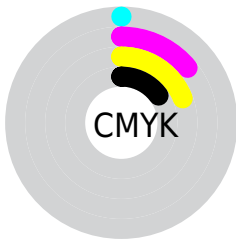
Blue (69%)



Red (85%)

Yellow (74%)

Blue (69%)

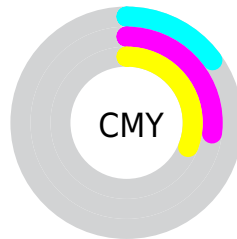


Cyan (0%)

Magenta (14%)

Yellow (19%)

Black (15%)



Cyan (15%)

Magenta (27%)

Yellow (31%)


Brightness & Saturation Gradients

These gradients show how the CIELCh color 78, 13.196, 43.958 changes by changing the brightness by 10 percent. The first figure shows a shift by +10% for each color and the second figure -10%.

Similar to the brightness gradients but the following saturation gradients show a change of the CIELCh color 78, 13.196, 43.958 by changing the saturation by 10% instead.

 78, 13.196, 43.958

 78, 13.196, 43.958

 100, 13.196,
43.958

 68, 13.196, 43.958

 98, 13.196, 43.958

 58, 13.196, 43.958

 48, 13.196, 43.958

 38, 13.196, 43.958

 28, 13.196, 43.958

 18, 13.196, 43.958

 8, 13.196, 43.958

 0, 13.196, 43.958

 78, 13.196, 43.958

 78, 13.196, 43.958

73, 21.031, 43.762

83, 5.958, 44.244

69, 29.505, 43.680

87, 0.733, 225.511

65, 38.626, 43.757

92, 6.934, 225.282

61, 48.351, 44.013

97, 11.729,
206.115

57, 58.531, 44.435

97, 12.659,
198.660

54, 68.799, 44.923

51, 78.321, 45.167

49, 85.767, 44.721

49, 86.564, 44.714

Harmonies

Complementary

The Complementary color scheme is a pair of colors which are on the opposite of each other on the color wheel.



78, 13.196, 43.958



81, 11.721, 225.831

Rectangle

The Rectangle color scheme consists of four colors that form a rectangle on the color wheel.



78, 13.196, 43.958



78, 13.196, 93.958



78, 13.196, 223.958



78, 13.196, 273.958

Sweetspot

The Sweet Spot groups the original color and five complimentary colors.



78, 13.195, 43.969



97, 4.536, 44.305



76, 22.558, 332.940



51, 3.017, 44.294



0, 0.000, 0.000



53, 0.007, 296.813

Same Dimension

The Same Dimension uses a secret algorithm to generate beautiful new colors.



78, 13.195, 43.969



88, 18.635, 43.867



83, 16.366, 93.796



44, 3.849, 44.229



39, 72.736, 45.151



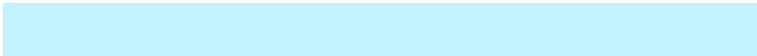
7, 20.387, 34.259

Inverse Universe

The Inverse Universe completely reimagines the original color for something new.



81, 11.721, 225.831



92, 16.057, 226.174



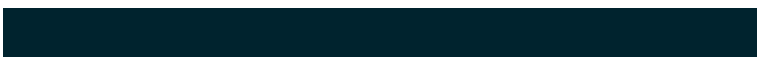
76, 16.525, 278.662



45, 3.640, 225.251



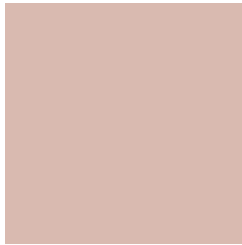
51, 34.003, 244.761



12, 13.222, 235.801

Previews

White Background



This preview shows how the CIELCh color 78, 13.196, 43.958 looks on a white background.

Color Contrast Check

Large Text (above 18pt) WCAG AA × Fail

Any Text WCAG AA × Fail

Large Text (above 18pt) WCAG AAA × Fail

Any Text WCAG AAA × Fail

Black Background



This preview shows how the CIELCh color 78, 13.196, 43.958 looks on a black background.

Color Contrast Check

Large Text (above 18pt) WCAG AA ✓ Pass

Any Text WCAG AA ✓ Pass

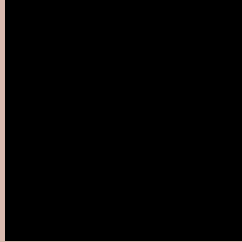
Large Text (above 18pt) WCAG AAA ✓ Pass

Any Text WCAG AAA ✓ Pass

If you want to check with other color combinations, try the [Color Contrast Checker](#).

CIELCh 78, 13.196, 43.958

Background



This preview shows how black text looks on a background with the CIELCh color 78, 13.196, 43.958.



This preview shows how white text looks on a background with the CIELCh color 78, 13.196, 43.958.

Color Blindness Simulation

Color vision deficiency is a very complex topic, and I could not describe the different causes any better than Wikipedia does, so if you want to learn more, you should check out their [article about color blindness](#).

Dichromacy



Original Color

78, 13.196, 43.958

Protanopia

78, 7.071, 84.119

Deuteranopia

78, 13.561, 43.304



Tritanopia
78, 15.693, 352.359

Trichromacy



Original Color
78, 13.196, 43.958

Protanomaly
78, 8.477, 63.383

Deuteranomaly
78, 13.561, 43.304

Tritanomaly
78, 13.514, 9.175

Monochromacy



Original Color
78, 13.196, 43.958

Achromatopsia
78, 0.009, 296.813

Achromatomaly
78, 4.410, 40.842

CSS Examples

Text

The CSS property to change the color of the text to CIELCh 78, 13.196, 43.958 is called "color". The color property can be set on classes, ids or directly on the HTML element.

This example shows how text in the color `rgb(217, 186, 176)` looks like.

```
.text, #text, p{  
    color:rgb(217, 186, 176)  
}
```

If you want to add a text shadow in that color use the text-shadow property, you can generate a text shadow directly with our [CSS Text Shadow Generator](#).

Here you see how black text with a 4 pixel rgb(217, 186, 176) colored shadow looks like.

```
.shadow{ text-shadow: 4px 4px 2px rgb(217, 186, 176) }
```

Border

The CSS property to change the border of an element to CIELCh 78, 13.196, 43.958 is called "border". The border property can be set on classes, ids or directly on the HTML element.

This example shows the color as border, it can be applied via the CSS property "border" or "border-color".

```
.border, #border, table{ border:4px solid rgb(217, 186, 176) }
```

If only the border color should be changed use the property `border-color`.

```
.border{ border-color:rgb(217, 186, 176) }
```

If you want to add a box shadow in that color use:

Here you see how a box with a 4 pixel `rgb(217, 186, 176)` colored shadow looks like.

```
.boxshadow{ -moz-box-shadow:4px 4px 4px  
4px rgb(217, 186, 176); -webkit-box-  
shadow:4px 4px 4px 4px rgb(217, 186, 176);  
box-shadow:4px 4px 4px 4px rgb(217, 186,  
176) }
```

Background

The CSS property to change the background color of an element to CIELCh 78, 13.196, 43.958 is called "background". The background property can be set on classes, ids or directly on the HTML element.

```
.background, #background, body{  
background: rgb(217, 186, 176) }
```

If only the background color should be changed can be used:

```
.background{ background-color: rgb(217,  
186, 176) }
```

This example shows the color as background, it is applied via the CSS property "background".

To optimize and compress your CSS code, you can use our [online CSS compressor and optimizer](#) based on csstidy. If you want to create a linear or radial gradient as background or border, check our [CSS Gradient Generator](#).

Hey! You found this booklet interesting? Support Converting Colors with the new Membership Option!

The pro membership hides all ads, plus gives you double the colors in the color bucket, and more awesome pro features!

[Learn more, Memberships starting at \\$2.50/m!](#)

**Follow me
on Twitter!**

@ConvertingColor