

Converting Colors

CIELCh(78, 13.334, 48.314)

Have a look what the booklet for
CIELCh(78, 13.334, 48.314) contains.

CIELCh(78, 13.346, 48.670)	3
<i>Conversions</i>	4
<i>Details</i>	6
<i>Harmonies</i>	11
<i>Previews</i>	20
<i>Color Blindness Simulation</i>	23
<i>CSS Examples</i>	26

Color

CIELCh(78, 13.346, 48.670)

Conversions

Conversions Part 1

Format	Color
Hex	D9BBAF
RGB	217, 187, 175
RGB Percent	85%, 73%, 69%
CMY	0.1502, 0.2678, 0.3148
CMYK	0.00, 0.14, 0.19, 0.15
HSL	17°, 35%, 77%
HSV	17°, 19%, 85%
XYZ	53.9493, 53.2120, 47.8416
YIQ	194.6020, 21.7320, 2.6280

Conversions

Conversions Part 2

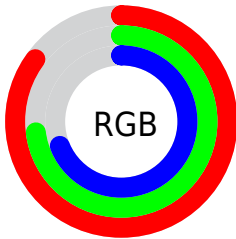
Format	Color
R _Y B	217, 192, 175
Decimal	14269359
CIE Lab	78.00, 8.81, 10.02
CIE LCh	78, 13.346, 48.670
Yxy	53.2120, 0.3481, 0.3433
Android (android.graphics.Color)	4292459439 (0xFFD9BBAF)
YUV	194.6020, -9.6638, 19.6430
Hunter-Lab	72.9466, 4.3572, 12.1776

Details

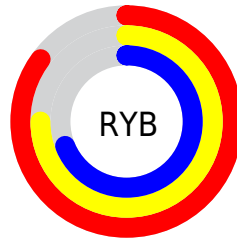
The CIELCh color **78, 13.346, 48.670** is a light color, and the websafe version is hex **FFCCCC**. A complement of this color would be **81, 11.905, 231.377**, and the grayscale version is **79, 0.010, 296.813**.

A 20% lighter version of the original color is **96, 7.490, 74.205**, and **58, 13.319, 48.066** is the 20% darker color. If you saturate the color by 10%, you get **74, 21.048, 48.247**, and if you desaturate by 10%, it is **82, 6.212, 49.166**.

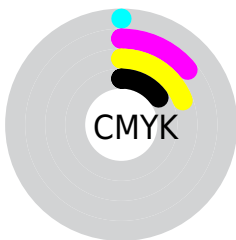
Distribution



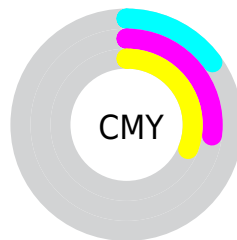
- Red (85%)
- Green (73%)
- Blue (69%)



- Red (85%)
- Yellow (75%)
- Blue (69%)



- Cyan (0%)
- Magenta (14%)
- Yellow (19%)
- Black (15%)



- Cyan (15%)
- Magenta (27%)
- Yellow (31%)


Brightness & Saturation Gradients

These gradients show how the CIELCh color 78, 13.346, 48.670 changes by changing the brightness by 10 percent. The first figure shows a shift by +10% for each color and the second figure -10%.

Similar to the brightness gradients but the following saturation gradients show a change of the CIELCh color 78, 13.346, 48.670 by changing the saturation by 10% instead.

 78, 13.346, 48.670

 78, 13.346, 48.670

 100, 13.346,
48.670

 68, 13.346, 48.670

 98, 13.346, 48.670

 58, 13.346, 48.670

 48, 13.346, 48.670

 38, 13.346, 48.670

 28, 13.346, 48.670

 18, 13.346, 48.670

 8, 13.346, 48.670

 0, 13.346, 48.670

 78, 13.346, 48.670

 78, 13.346, 48.670

74, 21.048, 48.247

82, 6.212, 49.166

70, 29.358, 47.912

87, 0.404, 231.191

65, 38.289, 47.702

91, 6.556, 230.560

62, 47.797, 47.627

96, 11.125,
215.952

58, 57.734, 47.662

97, 12.865,
198.647

55, 67.724, 47.694

52, 76.917, 47.411

50, 84.139, 46.462

50, 84.579, 46.428

Harmonies

Complementary

The Complementary color scheme is a pair of colors which are on the opposite of each other on the color wheel.



78, 13.346, 48.670



81, 11.905, 231.377

Rectangle

The Rectangle color scheme consists of four colors that form a rectangle on the color wheel.



78, 13.346, 48.670



78, 13.346, 98.670



78, 13.346, 228.670



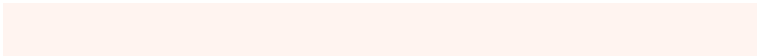
78, 13.346, 278.670

Sweetspot

The Sweet Spot groups the original color and five complimentary colors.



78, 13.345, 48.681



97, 4.479, 49.307



76, 22.311, 334.943



51, 2.979, 49.282



0, 0.000, 0.000



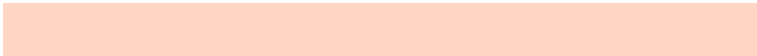
53, 0.007, 296.813

Same Dimension

The Same Dimension uses a secret algorithm to generate beautiful new colors.



78, 13.345, 48.681



88, 18.353, 48.505



83, 17.620, 97.113



43, 3.726, 49.164



39, 70.412, 46.951



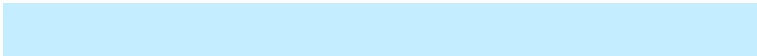
7, 18.482, 36.658

Inverse Universe

The Inverse Universe completely reimagines the original color for something new.



81, 11.905, 231.377



92, 15.963, 231.772



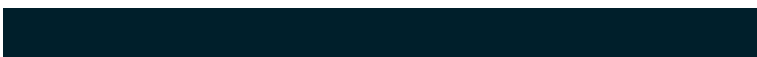
75, 17.953, 281.934



43, 3.537, 230.543



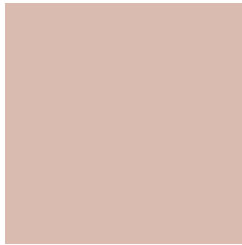
48, 35.413, 253.108



10, 13.056, 242.542

Previews

White Background



This preview shows how the CIELCh color 78, 13.346, 48.670 looks on a white background.

Color Contrast Check

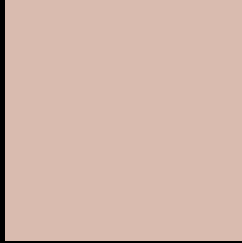
Large Text (above 18pt) WCAG AA × Fail

Any Text WCAG AA × Fail

Large Text (above 18pt) WCAG AAA × Fail

Any Text WCAG AAA × Fail

Black Background



This preview shows how the CIELCh color 78, 13.346, 48.670 looks on a black background.

Color Contrast Check

Large Text (above 18pt) WCAG AA ✓ Pass

Any Text WCAG AA ✓ Pass

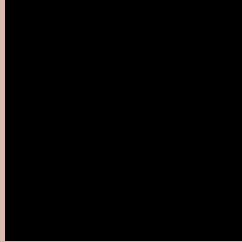
Large Text (above 18pt) WCAG AAA ✓ Pass

Any Text WCAG AAA ✓ Pass

If you want to check with other color combinations, try the [Color Contrast Checker](#).

CIELCh 78, 13.346, 48.670

Background



This preview shows how black text looks on a background with the CIELCh color 78, 13.346, 48.670.



This preview shows how white text looks on a background with the CIELCh color 78, 13.346, 48.670.

Color Blindness Simulation

Color vision deficiency is a very complex topic, and I could not describe the different causes any better than Wikipedia does, so if you want to learn more, you should check out their [article about color blindness](#).

Dichromacy



Original Color

78, 13.346, 48.670

Protanopia

78, 8.053, 87.216

Deuteranopia

78, 13.807, 45.266



Tritanopia
78, 15.933, 350.648

Trichromacy



Original Color
78, 13.346, 48.670

Protanomaly
78, 9.267, 67.977

Deuteranomaly
78, 13.807, 45.266

Tritanomaly
78, 13.604, 6.967

Monochromacy



Original Color
78, 13.346, 48.670

Achromatopsia
78, 0.009, 296.813

Achromatomaly
78, 4.635, 46.961

CSS Examples

Text

The CSS property to change the color of the text to CIELCh 78, 13.346, 48.670 is called "color". The color property can be set on classes, ids or directly on the HTML element.

This example shows how text in the color `rgb(217, 187, 175)` looks like.

```
.text, #text, p{  
    color:rgb(217, 187, 175)  
}
```

If you want to add a text shadow in that color use the text-shadow property, you can generate a text shadow directly with our [CSS Text Shadow Generator](#).

Here you see how black text with a 4 pixel rgb(217, 187, 175) colored shadow looks like.

```
.shadow{ text-shadow: 4px 4px 2px rgb(217, 187, 175) }
```

Border

The CSS property to change the border of an element to CIELCh 78, 13.346, 48.670 is called "border". The border property can be set on classes, ids or directly on the HTML element.

This example shows the color as border, it can be applied via the CSS property "border" or "border-color".

```
.border, #border, table{ border:4px solid rgb(217, 187, 175) }
```

If only the border color should be changed use the property border-color.

```
.border{ border-color:rgb(217, 187, 175) }
```

If you want to add a box shadow in that color use:

Here you see how a box with a 4 pixel rgb(217, 187, 175) colored shadow looks like.

```
.boxshadow{ -moz-box-shadow:4px 4px 4px  
4px rgb(217, 187, 175); -webkit-box-  
shadow:4px 4px 4px 4px rgb(217, 187, 175);  
box-shadow:4px 4px 4px 4px rgb(217, 187,  
175) }
```

Background

The CSS property to change the background color of an element to CIELCh 78, 13.346, 48.670 is called "background". The background property can be set on classes, ids or directly on the HTML element.

```
.background, #background, body{  
background: rgb(217, 187, 175) }
```

If only the background color should be changed can be used:

```
.background{ background-color: rgb(217,  
187, 175) }
```

This example shows the color as background, it is applied via the CSS property "background".

To optimize and compress your CSS code, you can use our [online CSS compressor and optimizer](#) based on csstidy. If you want to create a linear or radial gradient as background or border, check our [CSS Gradient Generator](#).

Hey! You found this booklet interesting? Support Converting Colors with the new Membership Option!

The pro membership hides all ads, plus gives you double the colors in the color bucket, and more awesome pro features!

[Learn more, Memberships starting at \\$2.50/m!](#)

**Follow me
on Twitter!**

@ConvertingColor