

Converting Colors

CIELCh(78, 13.545, 32.314)

Have a look what the booklet for
CIELCh(78, 13.545, 32.314) contains.

CIELCh(78, 13.396, 31.815)	3
<i>Conversions</i>	4
<i>Details</i>	6
<i>Harmonies</i>	11
<i>Previews</i>	20
<i>Color Blindness Simulation</i>	23
<i>CSS Examples</i>	26

Color

CIELCh(78, 13.396, 31.815)

Conversions

Conversions Part 1

Format	Color
Hex	DBB9B4
RGB	219, 185, 180
RGB Percent	86%, 73%, 71%
CMY	0.1401, 0.2735, 0.2931
CMYK	0.00, 0.16, 0.18, 0.14
HSL	8°, 35%, 78%
HSV	8°, 18%, 86%
XYZ	54.9601, 53.2120, 50.6901
YIQ	194.5960, 21.8690, 5.6530

Conversions

Conversions Part 2

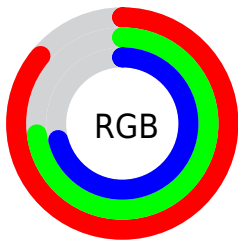
Format	Color
R_{YB}	219, 186, 180
Decimal	14399924
CIE _{Lab}	78.00, 11.38, 7.06
CIE _{LCh}	78, 13.396, 31.815
Yxy	53.2120, 0.3460, 0.3350
Android (android.graphics.Color)	4292590004 (0xFFDDBB9B4)
YUV	194.5960, -7.1958, 21.4023
Hunter-Lab	72.9466, 6.8308, 9.8624

Details

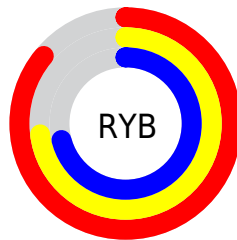
The CIELCh color **78, 13.396, 31.815** is a light color, and the websafe version is hex **FFCCCC**. A complement of this color would be **83, 11.881, 211.562**, and the grayscale version is **79, 0.010, 296.813**.

A 20% lighter version of the original color is **96, 5.628, 46.539**, and **58, 13.584, 32.638** is the 20% darker color. If you saturate the color by 10%, you get **73, 21.818, 32.245**, and if you desaturate by 10%, it is **83, 5.627, 31.523**.

Distribution



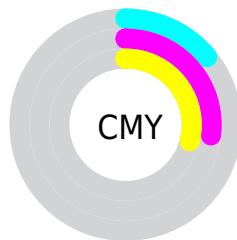
- Red (86%)
- Green (73%)
- Blue (71%)



- Red (86%)
- Yellow (73%)
- Blue (71%)



- Cyan (0%)
- Magenta (16%)
- Yellow (18%)
- Black (14%)



- Cyan (14%)
- Magenta (27%)
- Yellow (29%)

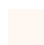
Brightness & Saturation Gradients

These gradients show how the CIELCh color 78, 13.396, 31.815 changes by changing the brightness by 10 percent. The first figure shows a shift by +10% for each color and the second figure -10%.

Similar to the brightness gradients but the following saturation gradients show a change of the CIELCh color 78, 13.396, 31.815 by changing the saturation by 10% instead.

 78, 13.396, 31.815

 78, 13.396, 31.815

 100, 13.396,
31.815

 68, 13.396, 31.815

 98, 13.396, 31.815

 58, 13.396, 31.815

 48, 13.396, 31.815

 38, 13.396, 31.815

 28, 13.396, 31.815

 18, 13.396, 31.815

 8, 13.396, 31.815

 0, 13.396, 31.815

 78, 13.396, 31.815

 78, 13.396, 31.815

73, 21.818, 32.245

83, 5.627, 31.523

68, 30.918, 32.866

89, 1.532, 211.898

63, 40.674, 33.751

94, 8.139, 211.557

59, 51.000, 34.954

98, 12.040,
198.702

55, 61.702, 36.505

52, 72.396, 38.336

49, 82.261, 40.133

47, 89.702, 41.210

47, 91.124, 41.501

Harmonies

Complementary

The Complementary color scheme is a pair of colors which are on the opposite of each other on the color wheel.



78, 13.396, 31.815



83, 11.881, 211.562

Rectangle

The Rectangle color scheme consists of four colors that form a rectangle on the color wheel.



78, 13.396, 31.815



78, 13.396, 81.815



78, 13.396, 211.815



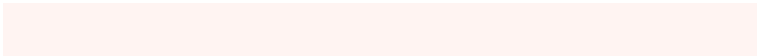
78, 13.396, 261.815

Sweetspot

The Sweet Spot groups the original color and five complimentary colors.



78, 13.395, 31.825



97, 4.035, 31.420



78, 23.233, 328.817



51, 2.761, 31.452



0, 0.000, 0.000



53, 0.007, 296.813

Same Dimension

The Same Dimension uses a secret algorithm to generate beautiful new colors.



78, 13.395, 31.825



87, 18.125, 31.949



83, 13.921, 84.617



43, 4.128, 31.572



37, 76.164, 41.762



6, 21.897, 27.012

Inverse Universe

The Inverse Universe completely reimagines the original color for something new.



83, 11.881, 211.562



95, 15.678, 211.594



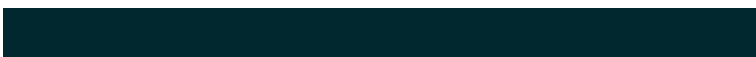
78, 13.716, 269.476



45, 3.884, 211.569



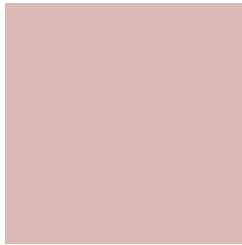
57, 32.869, 219.906



14, 13.369, 215.354

Previews

White Background



This preview shows how the CIELCh color 78, 13.396, 31.815 looks on a white background.

Color Contrast Check

Large Text (above 18pt) WCAG AA × Fail

Any Text WCAG AA × Fail

Large Text (above 18pt) WCAG AAA × Fail

Any Text WCAG AAA × Fail

Black Background



This preview shows how the CIELCh color 78, 13.396, 31.815 looks on a black background.

Color Contrast Check

Large Text (above 18pt) WCAG AA ✓ Pass

Any Text WCAG AA ✓ Pass

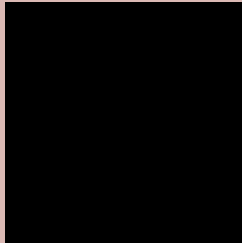
Large Text (above 18pt) WCAG AAA ✓ Pass

Any Text WCAG AAA ✓ Pass

If you want to check with other color combinations, try the [Color Contrast Checker](#).

CIELCh 78, 13.396, 31.815

Background



This preview shows how black text looks on a background with the CIELCh color 78, 13.396, 31.815.



This preview shows how white text looks on a background with the CIELCh color 78, 13.396, 31.815.

Color Blindness Simulation

Color vision deficiency is a very complex topic, and I could not describe the different causes any better than Wikipedia does, so if you want to learn more, you should check out their [article about color blindness](#).

Dichromacy



Original Color

78, 13.396, 31.815

Protanopia

78, 4.999, 77.941

Deuteranopia

78, 11.996, 35.649



Tritanopia
78, 16.026, 353.044

Trichromacy



Original Color
78, 13.396, 31.815

Protanomaly
78, 7.123, 51.286

Deuteranomaly
78, 12.377, 35.190

Tritanomaly
78, 14.085, 5.257

Monochromacy



Original Color
78, 13.396, 31.815

Achromatopsia
79, 0.010, 296.813

Achromatomaly
78, 4.886, 25.933

CSS Examples

Text

The CSS property to change the color of the text to CIELCh 78, 13.396, 31.815 is called "color". The color property can be set on classes, ids or directly on the HTML element.

This example shows how text in the color `rgb(219, 185, 180)` looks like.

```
.text, #text, p{  
    color:rgb(219, 185, 180)  
}
```

If you want to add a text shadow in that color use the text-shadow property, you can generate a text shadow directly with our [CSS Text Shadow Generator](#).

Here you see how black text with a 4 pixel rgb(219, 185, 180) colored shadow looks like.

```
.shadow{ text-shadow: 4px 4px 2px rgb(219, 185, 180) }
```

Border

The CSS property to change the border of an element to CIELCh 78, 13.396, 31.815 is called "border". The border property can be set on classes, ids or directly on the HTML element.

This example shows the color as border, it can be applied via the CSS property "border" or "border-color".

```
.border, #border, table{ border:4px solid rgb(219, 185, 180) }
```

If only the border color should be changed use the property `border-color`.

```
.border{ border-color:rgb(219, 185, 180) }
```

If you want to add a box shadow in that color use:

Here you see how a box with a 4 pixel `rgb(219, 185, 180)` colored shadow looks like.

```
.boxshadow{ -moz-box-shadow:4px 4px 4px  
4px rgb(219, 185, 180); -webkit-box-  
shadow:4px 4px 4px 4px rgb(219, 185, 180);  
box-shadow:4px 4px 4px 4px rgb(219, 185,  
180) }
```

Background

The CSS property to change the background color of an element to CIELCh 78, 13.396, 31.815 is called "background". The background property can be set on classes, ids or directly on the HTML element.

```
.background, #background, body{  
background: rgb(219, 185, 180) }
```

If only the background color should be changed can be used:

```
.background{ background-color: rgb(219,  
185, 180) }
```

This example shows the color as background, it is applied via the CSS property "background".

To optimize and compress your CSS code, you can use our [online CSS compressor and optimizer](#) based on csstidy. If you want to create a linear or radial gradient as background or border, check our [CSS Gradient Generator](#).

Hey! You found this booklet interesting? Support Converting Colors with the new Membership Option!

The pro membership hides all ads, plus gives you double the colors in the color bucket, and more awesome pro features!

[Learn more, Memberships starting at \\$2.50/m!](#)

**Follow me
on Twitter!**

@ConvertingColor