

Converting Colors

CIELCh(78, 13.598, 30.091)

Have a look what the booklet for
CIELCh(78, 13.598, 30.091) contains.

CIELCh(78, 13.660, 29.369)	3
<i>Conversions</i>	4
<i>Details</i>	6
<i>Harmonies</i>	11
<i>Previews</i>	20
<i>Color Blindness Simulation</i>	23
<i>CSS Examples</i>	26

Color

CIELCh(78, 13.660, 29.369)

Conversions

Conversions Part 1

Format	Color
Hex	DCB9B5
RGB	220, 185, 181
RGB Percent	86%, 73%, 71%
CMY	0.1375, 0.2747, 0.2904
CMYK	0.00, 0.16, 0.18, 0.14
HSL	6°, 36%, 79%
HSV	6°, 18%, 86%
XYZ	55.1666, 53.2120, 51.0468
YIQ	195.0090, 22.1440, 6.1760

Conversions

Conversions Part 2

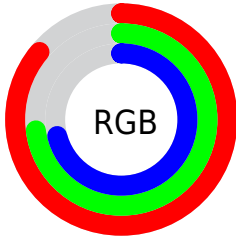
Format	Color
R _Y B	220, 185, 181
Decimal	14465461
CIE Lab	78.00, 11.90, 6.70
CIE LCh	78, 13.660, 29.369
Yxy	53.2120, 0.3460, 0.3338
Android (android.graphics.Color)	4292655541 (0xFFDCB9B5)
YUV	195.0090, -6.9064, 21.9171
Hunter-Lab	72.9466, 7.3361, 9.5724

Details

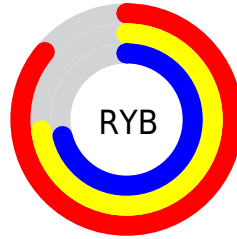
The CIELCh color **78, 13.660, 29.369** is a light color, and the websafe version is hex **FFCCCC**. A complement of this color would be **84, 12.119, 208.703**, and the grayscale version is **79, 0.010, 296.813**.

A 20% lighter version of the original color is **96, 5.410, 41.752**, and **58, 13.854, 30.090** is the 20% darker color. If you saturate the color by 10%, you get **73, 22.267, 29.930**, and if you desaturate by 10%, it is **83, 5.713, 28.959**.

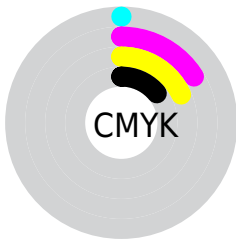
Distribution



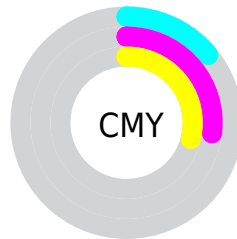
- Red (86%)
- Green (73%)
- Blue (71%)



- Red (86%)
- Yellow (73%)
- Blue (71%)



- Cyan (0%)
- Magenta (16%)
- Yellow (18%)
- Black (14%)



- Cyan (14%)
- Magenta (27%)
- Yellow (29%)


Brightness & Saturation Gradients

These gradients show how the CIELCh color 78, 13.660, 29.369 changes by changing the brightness by 10 percent. The first figure shows a shift by +10% for each color and the second figure -10%.

Similar to the brightness gradients but the following saturation gradients show a change of the CIELCh color 78, 13.660, 29.369 by changing the saturation by 10% instead.

 78, 13.660, 29.369

 78, 13.660, 29.369

 100, 13.660,
29.369

 68, 13.660, 29.369

 98, 13.660, 29.369

 58, 13.660, 29.369

 48, 13.660, 29.369

 38, 13.660, 29.369

 28, 13.660, 29.369

 18, 13.660, 29.369

 8, 13.660, 29.369

 0, 13.660, 29.369

 78, 13.660, 29.369

 78, 13.660, 29.369

73, 22.267, 29.930

83, 5.713, 28.959

68, 31.553, 30.702

89, 1.611, 209.208

63, 41.483, 31.763

95, 8.369, 208.782

58, 51.949, 33.179

98, 11.823,
198.716

54, 62.740, 34.988

51, 73.454, 37.129

49, 83.267, 39.276

47, 90.549, 40.692

47, 91.953, 41.060

Harmonies

Complementary

The Complementary color scheme is a pair of colors which are on the opposite of each other on the color wheel.



78, 13.660, 29.369



84, 12.119, 208.703

Rectangle

The Rectangle color scheme consists of four colors that form a rectangle on the color wheel.



78, 13.660, 29.369



78, 13.660, 79.369



78, 13.660, 209.369



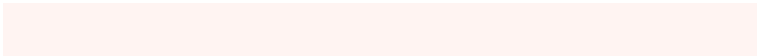
78, 13.660, 259.369

Sweetspot

The Sweet Spot groups the original color and five complimentary colors.



78, 13.659, 29.379



97, 4.120, 28.829



78, 23.480, 328.290



51, 2.819, 28.868



0, 0.000, 0.000



53, 0.007, 296.813

Same Dimension

The Same Dimension uses a secret algorithm to generate beautiful new colors.



78, 13.659, 29.379



87, 18.502, 29.548



83, 13.712, 83.121



43, 4.215, 29.029



37, 76.706, 41.272



6, 22.265, 25.565

Inverse Universe

The Inverse Universe completely reimagines the original color for something new.



84, 12.119, 208.703



95, 16.003, 208.688



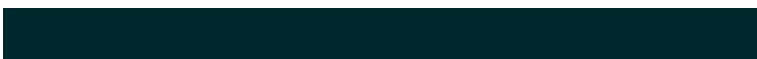
79, 13.456, 267.979



45, 3.965, 208.813



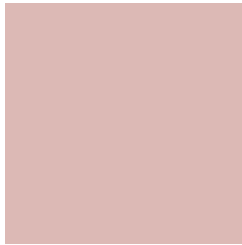
59, 33.372, 214.635



14, 13.598, 211.146

Previews

White Background



This preview shows how the CIELCh color 78, 13.660, 29.369 looks on a white background.

Color Contrast Check

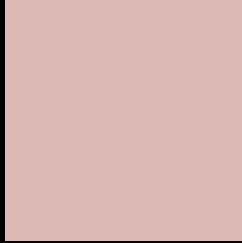
Large Text (above 18pt) WCAG AA × Fail

Any Text WCAG AA × Fail

Large Text (above 18pt) WCAG AAA × Fail

Any Text WCAG AAA × Fail

Black Background



This preview shows how the CIE LCh color 78, 13.660, 29.369 looks on a black background.

Color Contrast Check

Large Text (above 18pt) WCAG AA ✓ Pass

Any Text WCAG AA ✓ Pass

Large Text (above 18pt) WCAG AAA ✓ Pass

Any Text WCAG AAA ✓ Pass

If you want to check with other color combinations, try the [Color Contrast Checker](#).

CIELCh 78, 13.660, 29.369

Background



This preview shows how black text looks on a background with the CIELCh color 78, 13.660, 29.369.

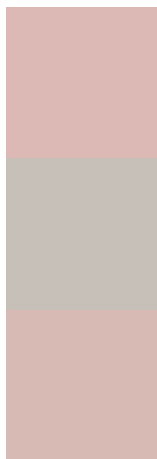


This preview shows how white text looks on a background with the CIELCh color 78, 13.660, 29.369.

Color Blindness Simulation

Color vision deficiency is a very complex topic, and I could not describe the different causes any better than Wikipedia does, so if you want to learn more, you should check out their [article about color blindness](#).

Dichromacy



Original Color

78, 13.660, 29.369

Protanopia

78, 4.344, 78.577

Deuteranopia

78, 11.839, 33.214



Tritanopia
78, 16.361, 353.704

Trichromacy



Original Color
78, 13.660, 29.369

Protanomaly
78, 6.966, 42.275

Deuteranomaly
78, 12.223, 32.828

Tritanomaly
78, 14.456, 5.699

Monochromacy



Original Color
78, 13.660, 29.369

Achromatopsia
79, 0.010, 296.813

Achromatomaly
78, 4.886, 25.933

CSS Examples

Text

The CSS property to change the color of the text to CIELCh 78, 13.660, 29.369 is called "color". The color property can be set on classes, ids or directly on the HTML element.

This example shows how text in the color `rgb(220, 185, 181)` looks like.

```
.text, #text, p{  
    color:rgb(220, 185, 181)  
}
```

If you want to add a text shadow in that color use the text-shadow property, you can generate a text shadow directly with our [CSS Text Shadow Generator](#).

Here you see how black text with a 4 pixel rgb(220, 185, 181) colored shadow looks like.

```
.shadow{ text-shadow: 4px 4px 2px rgb(220, 185, 181) }
```

Border

The CSS property to change the border of an element to CIELCh 78, 13.660, 29.369 is called "border". The border property can be set on classes, ids or directly on the HTML element.

This example shows the color as border, it can be applied via the CSS property "border" or "border-color".

```
.border, #border, table{ border:4px solid rgb(220, 185, 181) }
```

If only the border color should be changed use the property border-color.

```
.border{ border-color:rgb(220, 185, 181) }
```

If you want to add a box shadow in that color use:

Here you see how a box with a 4 pixel rgb(220, 185, 181) colored shadow looks like.

```
.boxshadow{ -moz-box-shadow:4px 4px 4px  
4px rgb(220, 185, 181); -webkit-box-  
shadow:4px 4px 4px 4px rgb(220, 185, 181);  
box-shadow:4px 4px 4px 4px rgb(220, 185,  
181) }
```

Background

The CSS property to change the background color of an element to CIELCh 78, 13.660, 29.369 is called "background". The background property can be set on classes, ids or directly on the HTML element.

```
.background, #background, body{  
background: rgb(220, 185, 181) }
```

If only the background color should be changed can be used:

```
.background{ background-color: rgb(220,  
185, 181) }
```

This example shows the color as background, it is applied via the CSS property "background".

To optimize and compress your CSS code, you can use our [online CSS compressor and optimizer](#) based on csstidy. If you want to create a linear or radial gradient as background or border, check our [CSS Gradient Generator](#).

Hey! You found this booklet interesting? Support Converting Colors with the new Membership Option!

The pro membership hides all ads, plus gives you double the colors in the color bucket, and more awesome pro features!

[Learn more, Memberships starting at \\$2.50/m!](#)

**Follow me
on Twitter!**

@ConvertingColor