

Converting Colors

CIELCh(78, 13.819, 20.907)

Have a look what the booklet for
CIELCh(78, 13.819, 20.907) contains.

CIELCh(78, 14.171, 20.537)	3
<i>Conversions</i>	4
<i>Details</i>	6
<i>Harmonies</i>	11
<i>Previews</i>	20
<i>Color Blindness Simulation</i>	23
<i>CSS Examples</i>	26

Color

CIELCh(78, 14.171, 20.537)

Conversions

Conversions Part 1

Format	Color
Hex	DDB8B8
RGB	221, 184, 184
RGB Percent	87%, 72%, 72%
CMY	0.1327, 0.2778, 0.2778
CMYK	0.00, 0.17, 0.17, 0.13
HSL	0°, 35%, 79%
HSV	0°, 17%, 87%
XYZ	55.7104, 53.2120, 52.7690
YIQ	195.0630, 22.0520, 7.8440

Conversions

Conversions Part 2

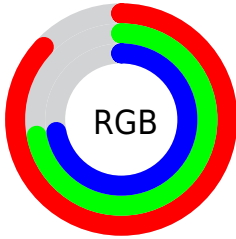
Format	Color
RYB	221, 184, 184
Decimal	14530744
CIELab	78.00, 13.27, 4.97
CIELCh	78, 14.171, 20.537
Yxy	53.2120, 0.3445, 0.3291
Android (android.graphics.Color)	4292720824 (0xFFDDB8B8)
YUV	195.0630, -5.4541, 22.7467
Hunter-Lab	72.9466, 8.6668, 8.1726

Details

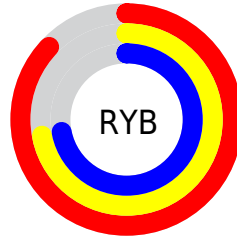
The CIELCh color **78, 14.171, 20.537** is a light color, and the websafe version is hex **FFCCCC**. A complement of this color would be **86, 12.710, 198.572**, and the grayscale version is **79, 0.010, 296.813**.

A 20% lighter version of the original color is **96, 5.358, 19.646**, and **58, 13.938, 20.855** is the 20% darker color. If you saturate the color by 10%, you get **72, 23.533, 21.542**, and if you desaturate by 10%, it is **84, 5.480, 19.724**.

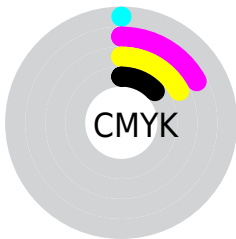
Distribution



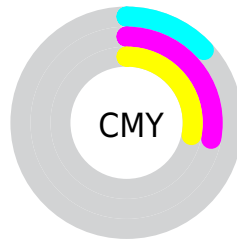
- Red (87%)
- Green (72%)
- Blue (72%)



- Red (87%)
- Yellow (72%)
- Blue (72%)



- Cyan (0%)
- Magenta (17%)
- Yellow (17%)
- Black (13%)



- Cyan (13%)
- Magenta (28%)
- Yellow (28%)


Brightness & Saturation Gradients

These gradients show how the CIELCh color 78, 14.171, 20.537 changes by changing the brightness by 10 percent. The first figure shows a shift by +10% for each color and the second figure -10%.

Similar to the brightness gradients but the following saturation gradients show a change of the CIELCh color 78, 14.171, 20.537 by changing the saturation by 10% instead.

 78, 14.171, 20.537

 78, 14.171, 20.537

 100, 14.171,
20.537

 68, 14.171, 20.537

 98, 14.171, 20.537

 58, 14.171, 20.537

 48, 14.171, 20.537

 38, 14.171, 20.537

 28, 14.171, 20.537

 18, 14.171, 20.537

 8, 14.171, 20.537

 0, 14.171, 20.537

 78, 14.171, 20.537

 78, 14.171, 20.537

72, 23.533, 21.542

84, 5.480, 19.724

67, 33.540, 22.832

90, 2.555, 199.477

61, 44.085, 24.516

96, 9.984, 198.842

57, 54.961, 26.709

98, 11.425,
198.743

53, 65.851, 29.500

50, 76.314, 32.864

47, 85.610, 36.439

46, 92.157, 39.227

46, 93.913, 40.001

Harmonies

Complementary

The Complementary color scheme is a pair of colors which are on the opposite of each other on the color wheel.



78, 14.171, 20.537



86, 12.710, 198.572

Rectangle

The Rectangle color scheme consists of four colors that form a rectangle on the color wheel.



78, 14.171, 20.537



78, 14.171, 70.537



78, 14.171, 200.537



78, 14.171, 250.537

Sweetspot

The Sweet Spot groups the original color and five complimentary colors.



78, 14.169, 20.545



97, 4.538, 19.576



79, 23.822, 325.348



51, 3.105, 19.640



0, 0.000, 0.000



53, 0.007, 296.813

Same Dimension

The Same Dimension uses a secret algorithm to generate beautiful new colors.



78, 14.169, 20.545



86, 19.267, 20.860



83, 12.068, 73.333



43, 4.638, 19.940



36, 78.233, 39.930



5, 23.838, 20.274

Inverse Universe

The Inverse Universe completely reimagines the original color for something new.



86, 12.710, 198.572



97, 16.870, 198.396



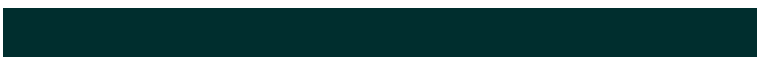
81, 11.558, 257.778



45, 4.370, 198.982



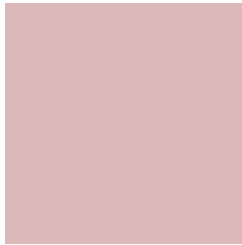
64, 37.525, 196.404



16, 15.072, 196.401

Previews

White Background



This preview shows how the CIELCh color 78, 14.171, 20.537 looks on a white background.

Color Contrast Check

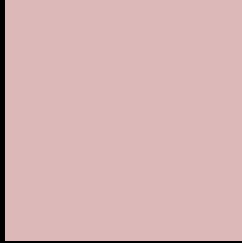
Large Text (above 18pt) WCAG AA × Fail

Any Text WCAG AA × Fail

Large Text (above 18pt) WCAG AAA × Fail

Any Text WCAG AAA × Fail

Black Background



This preview shows how the CIELCh color 78, 14.171, 20.537 looks on a black background.

Color Contrast Check

Large Text (above 18pt) WCAG AA ✓ Pass

Any Text WCAG AA ✓ Pass

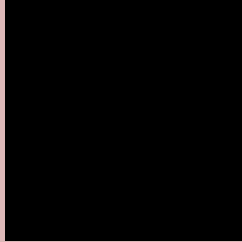
Large Text (above 18pt) WCAG AAA ✓ Pass

Any Text WCAG AAA ✓ Pass

If you want to check with other color combinations, try the [Color Contrast Checker](#).

CIELCh 78, 14.171, 20.537

Background



This preview shows how black text looks on a background with the CIELCh color 78, 14.171, 20.537.

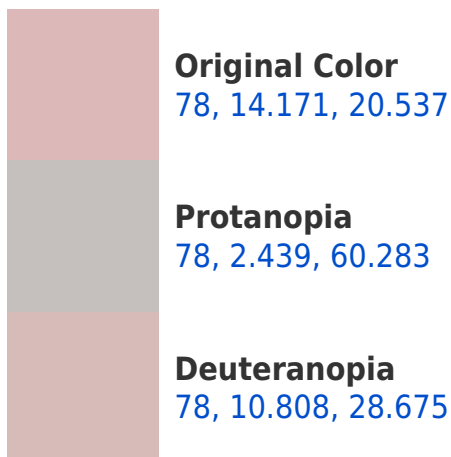


This preview shows how white text looks on a background with the CIELCh color 78, 14.171, 20.537.

Color Blindness Simulation

Color vision deficiency is a very complex topic, and I could not describe the different causes any better than Wikipedia does, so if you want to learn more, you should check out their [article about color blindness](#).

Dichromacy





Tritanopia
78, 17.054, 354.960

Trichromacy



Original Color
78, 14.171, 20.537

Protanomaly
78, 6.488, 29.272

Deuteranomaly
78, 11.897, 25.430

Tritanomaly
78, 15.458, 2.680

Monochromacy



Original Color
78, 14.171, 20.537

Achromatopsia
79, 0.010, 296.813

Achromatomaly
78, 5.229, 19.720

CSS Examples

Text

The CSS property to change the color of the text to CIELCh 78, 14.171, 20.537 is called "color". The color property can be set on classes, ids or directly on the HTML element.

This example shows how text in the color `rgb(221, 184, 184)` looks like.

```
.text, #text, p{  
    color:rgb(221, 184, 184)  
}
```

If you want to add a text shadow in that color use the text-shadow property, you can generate a text shadow directly with our [CSS Text Shadow Generator](#).

Here you see how black text with a 4 pixel rgb(221, 184, 184) colored shadow looks like.

```
.shadow{ text-shadow: 4px 4px 2px rgb(221, 184, 184) }
```

Border

The CSS property to change the border of an element to CIELCh 78, 14.171, 20.537 is called "border". The border property can be set on classes, ids or directly on the HTML element.

This example shows the color as border, it can be applied via the CSS property "border" or "border-color".

```
.border, #border, table{ border:4px solid rgb(221, 184, 184) }
```

If only the border color should be changed use the property `border-color`.

```
.border{ border-color:rgb(221, 184, 184) }
```

If you want to add a box shadow in that color use:

Here you see how a box with a 4 pixel `rgb(221, 184, 184)` colored shadow looks like.

```
.boxshadow{ -moz-box-shadow:4px 4px 4px 4px rgb(221, 184, 184); -webkit-box-shadow:4px 4px 4px 4px rgb(221, 184, 184); box-shadow:4px 4px 4px 4px rgb(221, 184, 184) }
```

Background

The CSS property to change the background color of an element to CIELCh 78, 14.171, 20.537 is called "background". The background property can be set on classes, ids or directly on the HTML element.

```
.background, #background, body{  
background: rgb(221, 184, 184) }
```

If only the background color should be changed can be used:

```
.background{ background-color: rgb(221,  
184, 184) }
```

This example shows the color as background, it is applied via the CSS property "background".

To optimize and compress your CSS code, you can use our [online CSS compressor and optimizer](#) based on csstidy. If you want to create a linear or radial gradient as background or border, check our [CSS Gradient Generator](#).

Hey! You found this booklet interesting? Support Converting Colors with the new Membership Option!

The pro membership hides all ads, plus gives you double the colors in the color bucket, and more awesome pro features!

[Learn more, Memberships starting at \\$2.50/m!](#)

**Follow me
on Twitter!**

@ConvertingColor