

Converting Colors

CIELCh(78, 14.592, 76.489)

Have a look what the booklet for
CIELCh(78, 14.592, 76.489) contains.

CIELCh(78, 14.592, 76.489)	3
<i>Conversions</i>	4
<i>Details</i>	6
<i>Harmonies</i>	11
<i>Previews</i>	20
<i>Color Blindness Simulation</i>	23
<i>CSS Examples</i>	26

Color

CIELCh(78, 14.592, 76.489)

Conversions

Conversions Part 1

Format	Color
Hex	D2BEA7
RGB	210, 190, 167
RGB Percent	82%, 75%, 65%
CMY	0.1772, 0.2556, 0.3457
CMYK	0.00, 0.10, 0.20, 0.18
HSL	32°, 32%, 74%
HSV	32°, 20%, 82%
XYZ	51.8638, 53.2120, 44.0155
YIQ	193.3580, 19.3030, -2.9130

Conversions

Conversions Part 2

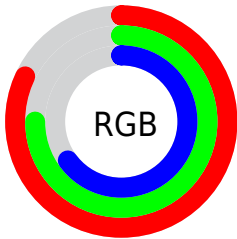
Format	Color
RYB	204, 210, 167
Decimal	13811367
CIELab	78.00, 3.41, 14.19
CIELCh	78, 14.592, 76.489
Yxy	53.2120, 0.3479, 0.3569
Android (android.graphics.Color)	4292001447 (0xFFD2BEA7)
YUV	193.3580, -12.9945, 14.5950
Hunter-Lab	72.9466, -0.7458, 15.2874

Details

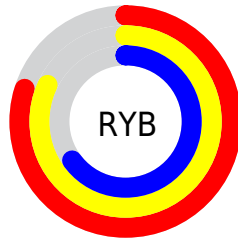
The CIELCh color $78, 14.592, 76.489$ is a light color, and the websafe version is hex `CCCCCC`. A complement of this color would be $75, 13.987, 262.120$, and the grayscale version is $78, 0.009, 296.813$.

A 20% lighter version of the original color is $97, 12.646, 94.080$, and $58, 14.645, 77.380$ is the 20% darker color. If you saturate the color by 10%, you get $75, 22.169, 75.201$, and if you desaturate by 10%, it is $81, 7.317, 77.756$.

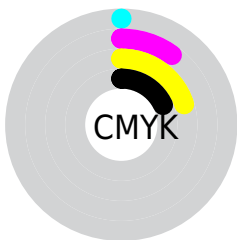
Distribution



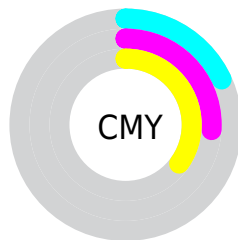
- Red (82%)
- Green (75%)
- Blue (65%)



- Red (80%)
- Yellow (82%)
- Blue (65%)



- Cyan (0%)
- Magenta (10%)
- Yellow (20%)
- Black (18%)



- Cyan (18%)
- Magenta (26%)
- Yellow (35%)

Brightness & Saturation Gradients

These gradients show how the CIELCh color 78, 14.592, 76.489 changes by changing the brightness by 10 percent. The first figure shows a shift by +10% for each color and the second figure -10%.

Similar to the brightness gradients but the following saturation gradients show a change of the CIELCh color 78, 14.592, 76.489 by changing the saturation by 10% instead.

■ 78, 14.592, 76.489

■ 78, 14.592, 76.489

■ 100, 14.592,
76.489

■ 68, 14.592, 76.489

■ 98, 14.592, 76.489

■ 58, 14.592, 76.489

■ 48, 14.592, 76.489

■ 38, 14.592, 76.489

■ 28, 14.592, 76.489

■ 18, 14.592, 76.489

■ 8, 14.592, 76.489

■ 0, 14.592, 76.489

■ 78, 14.592, 76.489

■ 78, 14.592, 76.489

75, 22.169, 75.201

81, 7.317, 77.756

72, 30.043, 73.877

84, 0.327, 77.973

69, 38.179, 72.527

87, 6.402, 260.320

67, 46.468, 71.131

90, 12.893,
261.463

64, 54.668, 69.640

93, 12.596,
241.324

62, 62.299, 67.933

59, 68.536, 65.781

95, 13.190,
213.681

57, 72.729, 63.210

97, 15.054,
198.503

Harmonies

Complementary

The Complementary color scheme is a pair of colors which are on the opposite of each other on the color wheel.



78, 14.592, 76.489



75, 13.987, 262.120

Rectangle

The Rectangle color scheme consists of four colors that form a rectangle on the color wheel.



78, 14.592, 76.489



78, 14.592, 126.489



78, 14.592, 256.489



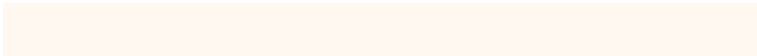
78, 14.592, 306.489

Sweetspot

The Sweet Spot groups the original color and five complimentary colors.



78, 14.593, 76.499



98, 4.857, 78.276



73, 19.452, 347.339



52, 3.226, 78.202



0, 0.000, 0.000



53, 0.007, 296.813

Same Dimension

The Same Dimension uses a secret algorithm to generate beautiful new colors.



78, 14.593, 76.499



91, 21.066, 75.881



83, 22.514, 109.619



43, 3.938, 77.887



47, 61.573, 63.828



9, 15.754, 62.980

Inverse Universe

The Inverse Universe completely reimagines the original color for something new.



75, 13.987, 262.120



87, 19.966, 262.972



70, 23.607, 293.673



42, 3.873, 260.412



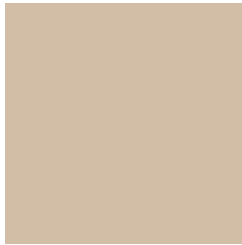
35, 56.289, 286.994



6, 16.967, 275.060

Previews

White Background



This preview shows how the CIELCh color 78, 14.592, 76.489 looks on a white background.

Color Contrast Check

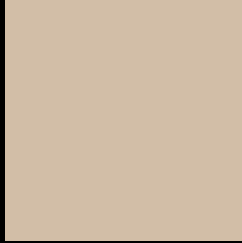
Large Text (above 18pt) WCAG AA × Fail

Any Text WCAG AA × Fail

Large Text (above 18pt) WCAG AAA × Fail

Any Text WCAG AAA × Fail

Black Background



This preview shows how the CIELCh color 78, 14.592, 76.489 looks on a black background.

Color Contrast Check

Large Text (above 18pt) WCAG AA ✓ Pass

Any Text WCAG AA ✓ Pass

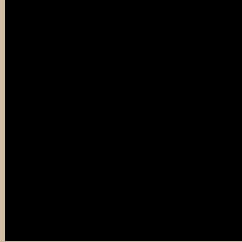
Large Text (above 18pt) WCAG AAA ✓ Pass

Any Text WCAG AAA ✓ Pass

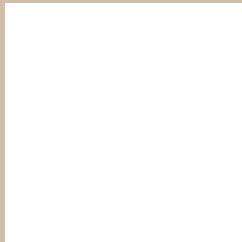
If you want to check with other color combinations, try the [Color Contrast Checker](#).

CIELCh 78, 14.592, 76.489

Background



This preview shows how black text looks on a background with the CIELCh color 78, 14.592, 76.489.



This preview shows how white text looks on a background with the CIELCh color 78, 14.592, 76.489.

Color Blindness Simulation

Color vision deficiency is a very complex topic, and I could not describe the different causes any better than Wikipedia does, so if you want to learn more, you should check out their [article about color blindness](#).

Dichromacy



Original Color


78, 14.592, 76.489

Protanopia

78, 13.367, 92.057

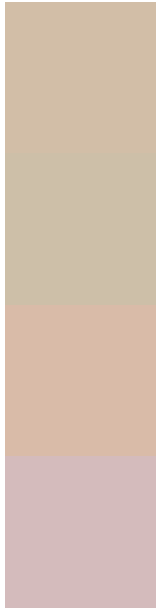
Deuteranopia

78, 16.925, 54.566



Tritanopia
78, 13.409, 343.839

Trichromacy



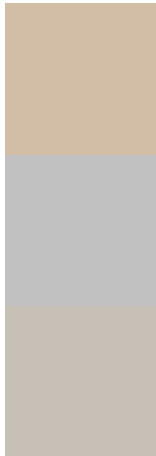
Original Color
78, 14.592, 76.489

Protanomaly
78, 13.432, 85.032

Deuteranomaly
78, 15.644, 60.192

Tritanomaly
78, 9.459, 16.901

Monochromacy



Original Color
78, 14.592, 76.489

Achromatopsia
78, 0.009, 296.813

Achromatomaly
78, 5.463, 80.806

CSS Examples

Text

The CSS property to change the color of the text to CIELCh 78, 14.592, 76.489 is called "color". The color property can be set on classes, ids or directly on the HTML element.

This example shows how text in the color `rgb(210, 190, 167)` looks like.

```
.text, #text, p{  
    color:rgb(210, 190, 167)  
}
```

If you want to add a text shadow in that color use the text-shadow property, you can generate a text shadow directly with our [CSS Text Shadow Generator](#).

Here you see how black text with a 4 pixel rgb(210, 190, 167) colored shadow looks like.

```
.shadow{ text-shadow: 4px 4px 2px rgb(210, 190, 167) }
```

Border

The CSS property to change the border of an element to CIELCh 78, 14.592, 76.489 is called "border". The border property can be set on classes, ids or directly on the HTML element.

This example shows the color as border, it can be applied via the CSS property "border" or "border-color".

```
.border, #border, table{ border:4px solid rgb(210, 190, 167) }
```

If only the border color should be changed use the property `border-color`.

```
.border{ border-color:rgb(210, 190, 167) }
```

If you want to add a box shadow in that color use:

Here you see how a box with a 4 pixel `rgb(210, 190, 167)` colored shadow looks like.

```
.boxshadow{ -moz-box-shadow:4px 4px 4px 4px rgb(210, 190, 167); -webkit-box-shadow:4px 4px 4px 4px rgb(210, 190, 167); box-shadow:4px 4px 4px 4px rgb(210, 190, 167) }
```

Background

The CSS property to change the background color of an element to CIELCh 78, 14.592, 76.489 is called "background". The background property can be set on classes, ids or directly on the HTML element.

```
.background, #background, body{  
background: rgb(210, 190, 167) }
```

If only the background color should be changed can be used:

```
.background{ background-color: rgb(210,  
190, 167) }
```

This example shows the color as background, it is applied via the CSS property "background".

To optimize and compress your CSS code, you can use our [online CSS compressor and optimizer](#) based on csstidy. If you want to create a linear or radial gradient as background or border, check our [CSS Gradient Generator](#).

Hey! You found this booklet interesting? Support Converting Colors with the new Membership Option!

The pro membership hides all ads, plus gives you double the colors in the color bucket, and more awesome pro features!

[Learn more, Memberships starting at \\$2.50/m!](#)

**Follow me
on Twitter!**

@ConvertingColor