

Converting Colors

CIELCh(78, 14.644, 60.719)

Have a look what the booklet for
CIELCh(78, 14.644, 60.719) contains.

CIELCh(78, 14.644, 60.719)	3
<i>Conversions</i>	4
<i>Details</i>	6
<i>Harmonies</i>	11
<i>Previews</i>	20
<i>Color Blindness Simulation</i>	23
<i>CSS Examples</i>	26

Color

CIELCh(78, 14.644, 60.719)

Conversions

Conversions Part 1

Format	Color
Hex	D8BCAA
RGB	216, 188, 170
RGB Percent	85%, 74%, 67%
CMY	0.1546, 0.2643, 0.3349
CMYK	0.00, 0.13, 0.21, 0.15
HSL	23°, 37%, 76%
HSV	23°, 21%, 85%
XYZ	53.3062, 53.2120, 45.2913
YIQ	194.3200, 22.4660, 0.3380

Conversions

Conversions Part 2

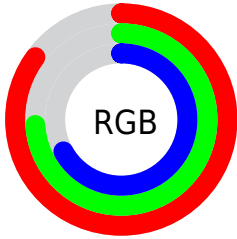
Format	Color
RYB	216, 200, 170
Decimal	14204074
CIELab	78.00, 7.16, 12.77
CIELCh	78, 14.644, 60.719
Yxy	53.2120, 0.3511, 0.3505
Android (android.graphics.Color)	4292394154 (0xFFD8BCAA)
YUV	194.3200, -11.9898, 19.0134
Hunter-Lab	72.9466, 2.7837, 14.2504

Details

The CIELCh color $78, 14.644, 60.719$ is a light color, and the websafe version is hex `FFCCCC`. A complement of this color would be $78, 13.308, 245.516$, and the grayscale version is $78, 0.009, 296.813$.

A 20% lighter version of the original color is $97, 10.474, 86.839$, and $58, 14.699, 60.718$ is the 20% darker color. If you saturate the color by 10%, you get $74, 22.233, 59.798$, and if you desaturate by 10%, it is $82, 7.530, 61.672$.

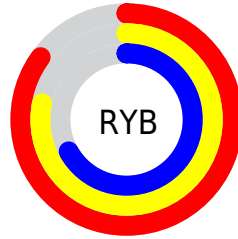
Distribution



Red (85%)

Green (74%)

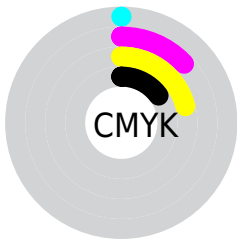
Blue (67%)



Red (85%)

Yellow (78%)

Blue (67%)

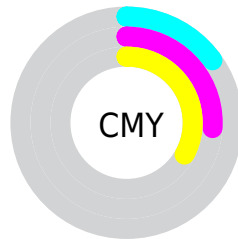


Cyan (0%)

Magenta (13%)

Yellow (21%)

Black (15%)



Cyan (15%)

Magenta (26%)

Yellow (33%)


Brightness & Saturation Gradients

These gradients show how the CIELCh color 78, 14.644, 60.719 changes by changing the brightness by 10 percent. The first figure shows a shift by +10% for each color and the second figure -10%.

Similar to the brightness gradients but the following saturation gradients show a change of the CIELCh color 78, 14.644, 60.719 by changing the saturation by 10% instead.

 78, 14.644, 60.719

 78, 14.644, 60.719

 100, 14.644,
60.719

 68, 14.644, 60.719

 98, 14.644, 60.719

 58, 14.644, 60.719

 48, 14.644, 60.719

 38, 14.644, 60.719

 28, 14.644, 60.719

 18, 14.644, 60.719

 8, 14.644, 60.719

 0, 14.644, 60.719

 78, 14.644, 60.719

 78, 14.644, 60.719

74, 22.233, 59.798

82, 7.530, 61.672

71, 30.324, 58.905

86, 0.851, 62.166

67, 38.914, 58.058

90, 5.438, 243.807

64, 47.935, 57.247

94, 11.100,
243.093

61, 57.193, 56.419

97, 12.630,
202.887

58, 66.230, 55.428

55, 74.125, 53.954

97, 13.228,
198.623

53, 79.483, 52.179

Harmonies

Complementary

The Complementary color scheme is a pair of colors which are on the opposite of each other on the color wheel.



78, 14.644, 60.719



78, 13.308, 245.516

Rectangle

The Rectangle color scheme consists of four colors that form a rectangle on the color wheel.



78, 14.644, 60.719



78, 14.644, 110.719



78, 14.644, 240.719



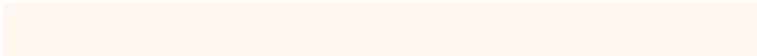
78, 14.644, 290.719

Sweetspot

The Sweet Spot groups the original color and five complimentary colors.



78, 14.644, 60.730



97, 4.493, 62.136



74, 22.838, 339.508



52, 2.987, 62.082



0, 0.000, 0.000



53, 0.007, 296.813

Same Dimension

The Same Dimension uses a secret algorithm to generate beautiful new colors.



78, 14.644, 60.730



89, 20.792, 60.268



84, 21.355, 102.693



43, 3.730, 61.847



42, 66.482, 52.802



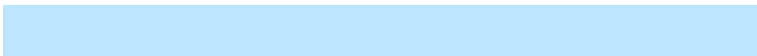
8, 17.457, 46.716

Inverse Universe

The Inverse Universe completely reimagines the original color for something new.



78, 13.308, 245.516



89, 18.428, 246.290



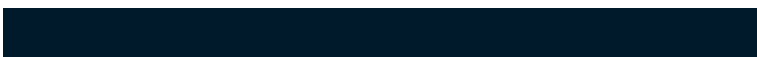
72, 22.145, 287.626



43, 3.589, 243.958



43, 42.707, 270.825



8, 14.656, 259.461

Previews

White Background



This preview shows how the CIELCh color 78, 14.644, 60.719 looks on a white background.

Color Contrast Check

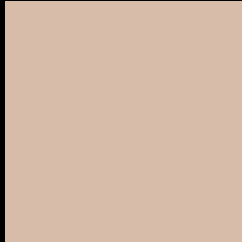
Large Text (above 18pt) WCAG AA × Fail

Any Text WCAG AA × Fail

Large Text (above 18pt) WCAG AAA × Fail

Any Text WCAG AAA × Fail

Black Background



This preview shows how the CIELCh color 78, 14.644, 60.719 looks on a black background.

Color Contrast Check

Large Text (above 18pt) WCAG AA ✓ Pass

Any Text WCAG AA ✓ Pass

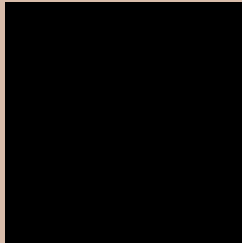
Large Text (above 18pt) WCAG AAA ✓ Pass

Any Text WCAG AAA ✓ Pass

If you want to check with other color combinations, try the [Color Contrast Checker](#).

CIELCh 78, 14.644, 60.719

Background



This preview shows how black text looks on a background with the CIELCh color 78, 14.644, 60.719.



This preview shows how white text looks on a background with the CIELCh color 78, 14.644, 60.719.

Color Blindness Simulation

Color vision deficiency is a very complex topic, and I could not describe the different causes any better than Wikipedia does, so if you want to learn more, you should check out their [article about color blindness](#).

Dichromacy



Original Color

78, 14.644, 60.719

Protanopia

78, 11.208, 91.123

Deuteranopia

78, 15.941, 52.408



Tritanopia
78, 15.610, 349.911

Trichromacy



Original Color
78, 14.644, 60.719

Protanomaly
78, 11.901, 77.741

Deuteranomaly
78, 15.250, 56.383

Tritanomaly
78, 12.615, 13.163

Monochromacy



Original Color
78, 14.644, 60.719

Achromatopsia
78, 0.009, 296.813

Achromatomaly
78, 5.287, 64.351

CSS Examples

Text

The CSS property to change the color of the text to CIELCh 78, 14.644, 60.719 is called "color". The color property can be set on classes, ids or directly on the HTML element.

This example shows how text in the color `rgb(216, 188, 170)` looks like.

```
.text, #text, p{  
    color:rgb(216, 188, 170)  
}
```

If you want to add a text shadow in that color use the text-shadow property, you can generate a text shadow directly with our [CSS Text Shadow Generator](#).

Here you see how black text with a 4 pixel rgb(216, 188, 170) colored shadow looks like.

```
.shadow{ text-shadow: 4px 4px 2px rgb(216, 188, 170) }
```

Border

The CSS property to change the border of an element to CIELCh 78, 14.644, 60.719 is called "border". The border property can be set on classes, ids or directly on the HTML element.

This example shows the color as border, it can be applied via the CSS property "border" or "border-color".

```
.border, #border, table{ border:4px solid rgb(216, 188, 170) }
```

If only the border color should be changed use the property `border-color`.

```
.border{ border-color:rgb(216, 188, 170) }
```

If you want to add a box shadow in that color use:

Here you see how a box with a 4 pixel `rgb(216, 188, 170)` colored shadow looks like.

```
.boxshadow{ -moz-box-shadow:4px 4px 4px  
4px rgb(216, 188, 170); -webkit-box-  
shadow:4px 4px 4px 4px rgb(216, 188, 170);  
box-shadow:4px 4px 4px 4px rgb(216, 188,  
170) }
```

Background

The CSS property to change the background color of an element to CIELCh 78, 14.644, 60.719 is called "background". The background property can be set on classes, ids or directly on the HTML element.

```
.background, #background, body{  
background: rgb(216, 188, 170) }
```

If only the background color should be changed can be used:

```
.background{ background-color: rgb(216,  
188, 170) }
```

This example shows the color as background, it is applied via the CSS property "background".

To optimize and compress your CSS code, you can use our [online CSS compressor and optimizer](#) based on csstidy. If you want to create a linear or radial gradient as background or border, check our [CSS Gradient Generator](#).

Hey! You found this booklet interesting? Support Converting Colors with the new Membership Option!

The pro membership hides all ads, plus gives you double the colors in the color bucket, and more awesome pro features!

[Learn more, Memberships starting at \\$2.50/m!](#)

**Follow me
on Twitter!**

@ConvertingColor