

Converting Colors

CIELCh(78, 14.745, 27.113)

Have a look what the booklet for
CIELCh(78, 14.745, 27.113) contains.

CIELCh(78, 14.750, 26.739)	3
<i>Conversions</i>	4
<i>Details</i>	6
<i>Harmonies</i>	11
<i>Previews</i>	20
<i>Color Blindness Simulation</i>	23
<i>CSS Examples</i>	26

Color

CIELCh(78, 14.750, 26.739)

Conversions

Conversions Part 1

Format	Color
Hex	DEB8B5
RGB	222, 184, 181
RGB Percent	87%, 72%, 71%
CMY	0.1290, 0.2780, 0.2898
CMYK	0.00, 0.17, 0.18, 0.13
HSL	4°, 38%, 79%
HSV	4°, 18%, 87%
XYZ	55.6715, 53.2120, 51.1088
YIQ	195.0200, 23.6110, 7.1230

Conversions

Conversions Part 2

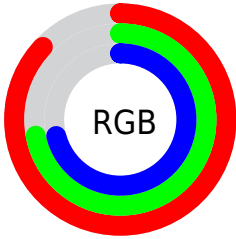
Format	Color
R _Y B	222, 184, 181
Decimal	14596277
CIE Lab	78.00, 13.17, 6.64
CIE LCh	78, 14.750, 26.739
Yxy	53.2120, 0.3480, 0.3326
Android (android.graphics.Color)	4292786357 (0xFFDEB8B5)
YUV	195.0200, -6.9119, 23.6615
Hunter-Lab	72.9466, 8.5714, 9.5220

Details

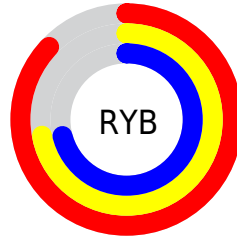
The CIELCh color **78, 14.750, 26.739** is a light color, and the websafe version is hex **FFCCCC**. A complement of this color would be **85, 13.022, 205.562**, and the grayscale version is **79, 0.010, 296.813**.

A 20% lighter version of the original color is **96, 5.587, 35.538**, and **58, 14.595, 27.500** is the 20% darker color. If you saturate the color by 10%, you get **73, 23.685, 27.460**, and if you desaturate by 10%, it is **84, 6.487, 26.195**.

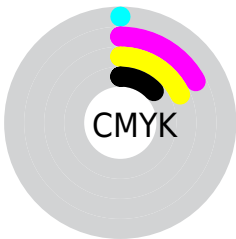
Distribution



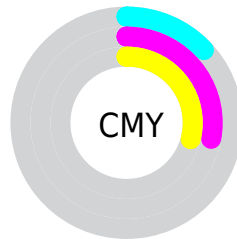
- Red (87%)
- Green (72%)
- Blue (71%)



- Red (87%)
- Yellow (72%)
- Blue (71%)



- Cyan (0%)
- Magenta (17%)
- Yellow (18%)
- Black (13%)



- Cyan (13%)
- Magenta (28%)
- Yellow (29%)


Brightness & Saturation Gradients

These gradients show how the CIELCh color 78, 14.750, 26.739 changes by changing the brightness by 10 percent. The first figure shows a shift by +10% for each color and the second figure -10%.

Similar to the brightness gradients but the following saturation gradients show a change of the CIELCh color 78, 14.750, 26.739 by changing the saturation by 10% instead.

 78, 14.750, 26.739

 78, 14.750, 26.739

 100, 14.750,
26.739

 68, 14.750, 26.739

 98, 14.750, 26.739

 58, 14.750, 26.739

 48, 14.750, 26.739

 38, 14.750, 26.739

 28, 14.750, 26.739

 18, 14.750, 26.739

 8, 14.750, 26.739

 0, 14.750, 26.739

 78, 14.750, 26.739

 78, 14.750, 26.739

73, 23.685, 27.460

84, 6.487, 26.195

67, 33.298, 28.421

89, 1.132, 206.466

62, 43.527, 29.710

95, 8.164, 205.766

58, 54.233, 31.402

98, 11.117,
198.764

54, 65.162, 33.546

51, 75.872, 36.069

48, 85.476, 38.595

47, 92.322, 40.347

47, 93.222, 40.657

Harmonies

Complementary

The Complementary color scheme is a pair of colors which are on the opposite of each other on the color wheel.



78, 14.750, 26.739



85, 13.022, 205.562

Rectangle

The Rectangle color scheme consists of four colors that form a rectangle on the color wheel.



78, 14.750, 26.739



78, 14.750, 76.739



78, 14.750, 206.739



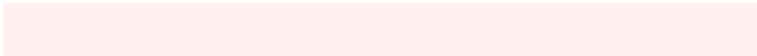
78, 14.750, 256.739

Sweetspot

The Sweet Spot groups the original color and five complimentary colors.



78, 14.748, 26.748



96, 5.095, 26.059



78, 25.220, 327.324



51, 3.388, 26.098



0, 0.000, 0.000



53, 0.007, 296.813

Same Dimension

The Same Dimension uses a secret algorithm to generate beautiful new colors.



78, 14.748, 26.748



86, 19.960, 26.988



83, 14.031, 79.886



44, 4.408, 26.247



37, 78.093, 40.816



6, 24.281, 24.694

Inverse Universe

The Inverse Universe completely reimagines the original color for something new.



85, 13.022, 205.562



95, 17.145, 205.495



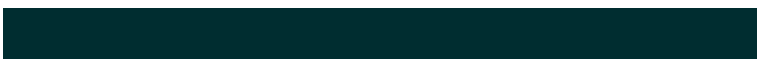
80, 13.634, 264.968



46, 4.146, 205.797



61, 34.609, 208.919



16, 14.397, 206.701

Previews

White Background



This preview shows how the CIELCh color 78, 14.750, 26.739 looks on a white background.

Color Contrast Check

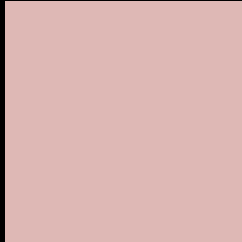
Large Text (above 18pt) WCAG AA × Fail

Any Text WCAG AA × Fail

Large Text (above 18pt) WCAG AAA × Fail

Any Text WCAG AAA × Fail

Black Background



This preview shows how the CIE LCh color 78, 14.750, 26.739 looks on a black background.

Color Contrast Check

Large Text (above 18pt) WCAG AA ✓ Pass

Any Text WCAG AA ✓ Pass

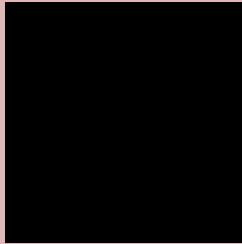
Large Text (above 18pt) WCAG AAA ✓ Pass

Any Text WCAG AAA ✓ Pass

If you want to check with other color combinations, try the [Color Contrast Checker](#).

CIELCh 78, 14.750, 26.739

Background



This preview shows how black text looks on a background with the CIELCh color 78, 14.750, 26.739.



This preview shows how white text looks on a background with the CIELCh color 78, 14.750, 26.739.

Color Blindness Simulation

Color vision deficiency is a very complex topic, and I could not describe the different causes any better than Wikipedia does, so if you want to learn more, you should check out their [article about color blindness](#).

Dichromacy



Original Color

78, 14.750, 26.739

Protanopia

78, 3.894, 74.596

Deuteranopia

78, 11.839, 33.214



Tritanopia
78, 17.395, 355.550

Trichromacy



Original Color
78, 14.750, 26.739

Protanomaly
78, 7.324, 41.146

Deuteranomaly
78, 12.881, 29.855

Tritanomaly
78, 15.699, 5.022

Monochromacy



Original Color
78, 14.750, 26.739

Achromatopsia
79, 0.010, 296.813

Achromatomaly
78, 5.262, 25.519

CSS Examples

Text

The CSS property to change the color of the text to CIELCh 78, 14.750, 26.739 is called "color". The color property can be set on classes, ids or directly on the HTML element.

This example shows how text in the color `rgb(222, 184, 181)` looks like.

```
.text, #text, p{  
    color:rgb(222, 184, 181)  
}
```

If you want to add a text shadow in that color use the text-shadow property, you can generate a text shadow directly with our [CSS Text Shadow Generator](#).

Here you see how black text with a 4 pixel rgb(222, 184, 181) colored shadow looks like.

```
.shadow{ text-shadow: 4px 4px 2px rgb(222, 184, 181) }
```

Border

The CSS property to change the border of an element to CIELCh 78, 14.750, 26.739 is called "border". The border property can be set on classes, ids or directly on the HTML element.

This example shows the color as border, it can be applied via the CSS property "border" or "border-color".

```
.border, #border, table{ border:4px solid rgb(222, 184, 181) }
```

If only the border color should be changed use the property border-color.

```
.border{ border-color:rgb(222, 184, 181) }
```

If you want to add a box shadow in that color use:

Here you see how a box with a 4 pixel rgb(222, 184, 181) colored shadow looks like.

```
.boxshadow{ -moz-box-shadow:4px 4px 4px  
4px rgb(222, 184, 181); -webkit-box-  
shadow:4px 4px 4px 4px rgb(222, 184, 181);  
box-shadow:4px 4px 4px 4px rgb(222, 184,  
181) }
```

Background

The CSS property to change the background color of an element to CIELCh 78, 14.750, 26.739 is called "background". The background property can be set on classes, ids or directly on the HTML element.

```
.background, #background, body{  
background: rgb(222, 184, 181) }
```

If only the background color should be changed can be used:

```
.background{ background-color: rgb(222,  
184, 181) }
```

This example shows the color as background, it is applied via the CSS property "background".

To optimize and compress your CSS code, you can use our [online CSS compressor and optimizer](#) based on csstidy. If you want to create a linear or radial gradient as background or border, check our [CSS Gradient Generator](#).

Hey! You found this booklet interesting? Support Converting Colors with the new Membership Option!

The pro membership hides all ads, plus gives you double the colors in the color bucket, and more awesome pro features!

[Learn more, Memberships starting at \\$2.50/m!](#)

**Follow me
on Twitter!**

@ConvertingColor