

Converting Colors

CIELCh(78, 15.154, 20.620)

Have a look what the booklet for
CIELCh(78, 15.154, 20.620) contains.

CIELCh(78, 14.956, 20.605)	3
<i>Conversions</i>	4
<i>Details</i>	6
<i>Harmonies</i>	11
<i>Previews</i>	20
<i>Color Blindness Simulation</i>	23
<i>CSS Examples</i>	26

Color

CIELCh(78, 14.956, 20.605)

Conversions

Conversions Part 1

Format	Color
Hex	DFB8B8
RGB	223, 184, 184
RGB Percent	87%, 72%, 72%
CMY	0.1269, 0.2798, 0.2798
CMYK	0.00, 0.18, 0.18, 0.13
HSL	0°, 38%, 80%
HSV	0°, 18%, 87%
XYZ	56.0021, 53.2120, 52.4753
YIQ	195.6610, 23.2440, 8.2680

Conversions

Conversions Part 2

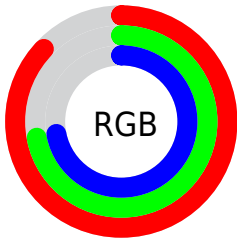
Format	Color
R _Y B	223, 184, 184
Decimal	14661816
CIE Lab	78.00, 14.00, 5.26
CIE LCh	78, 14.956, 20.605
Yxy	53.2120, 0.3464, 0.3291
Android (android.graphics.Color)	4292851896 (0xFFDFB8B8)
YUV	195.6610, -5.7489, 23.9763
Hunter-Lab	72.9466, 9.3804, 8.4114

Details

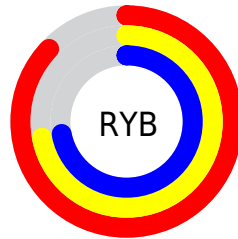
The CIELCh color **78, 14.956, 20.605** is a light color, and the websafe version is hex **FFCCCC**. A complement of this color would be **86, 13.341, 198.529**, and the grayscale version is **79, 0.010, 296.813**.

A 20% lighter version of the original color is **96, 5.358, 19.646**, and **58, 14.780, 20.947** is the 20% darker color. If you saturate the color by 10%, you get **72, 24.421, 21.630**, and if you desaturate by 10%, it is **84, 6.165, 19.785**.

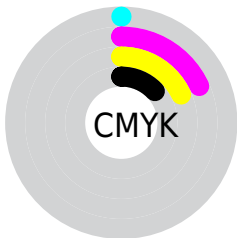
Distribution



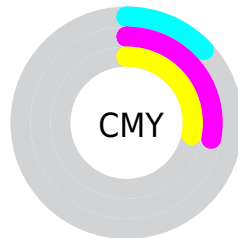
- Red (87%)
- Green (72%)
- Blue (72%)



- Red (87%)
- Yellow (72%)
- Blue (72%)



- Cyan (0%)
- Magenta (18%)
- Yellow (18%)
- Black (13%)



- Cyan (13%)
- Magenta (28%)
- Yellow (28%)


Brightness & Saturation Gradients

These gradients show how the CIELCh color 78, 14.956, 20.605 changes by changing the brightness by 10 percent. The first figure shows a shift by +10% for each color and the second figure -10%.

Similar to the brightness gradients but the following saturation gradients show a change of the CIELCh color 78, 14.956, 20.605 by changing the saturation by 10% instead.

 78, 14.956, 20.605

 78, 14.956, 20.605

 100, 14.956,
20.605

 68, 14.956, 20.605

 98, 14.956, 20.605

 58, 14.956, 20.605

 48, 14.956, 20.605

 38, 14.956, 20.605

 28, 14.956, 20.605

 18, 14.956, 20.605

 8, 14.956, 20.605

 0, 14.956, 20.605

 78, 14.956, 20.605

 78, 14.956, 20.605

72, 24.421, 21.630

84, 6.165, 19.785

67, 34.531, 22.947

90, 1.963, 199.587

61, 45.168, 24.669

96, 9.477, 198.875

57, 56.117, 26.908

98, 10.946,
198.775

53, 67.049, 29.750

50, 77.509, 33.153

48, 86.705, 36.712

47, 93.033, 39.408

46, 94.382, 40.001

Harmonies

Complementary

The Complementary color scheme is a pair of colors which are on the opposite of each other on the color wheel.



78, 14.956, 20.605



86, 13.341, 198.529

Rectangle

The Rectangle color scheme consists of four colors that form a rectangle on the color wheel.



78, 14.956, 20.605



78, 14.956, 70.605



78, 14.956, 200.605



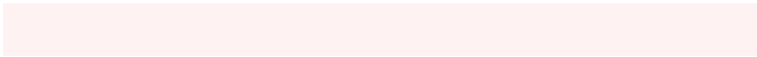
78, 14.956, 250.605

Sweetspot

The Sweet Spot groups the original color and five complimentary colors.



78, 14.954, 20.613



97, 4.538, 19.574



79, 25.069, 325.392



51, 3.105, 19.638



0, 0.000, 0.000



53, 0.007, 296.813

Same Dimension

The Same Dimension uses a secret algorithm to generate beautiful new colors.



78, 14.954, 20.613



86, 20.311, 20.956



83, 12.720, 73.237



44, 4.728, 19.940



36, 79.112, 39.953



6, 25.539, 20.943

Inverse Universe

The Inverse Universe completely reimagines the original color for something new.



86, 13.341, 198.529



96, 17.656, 198.344



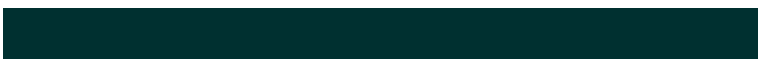
81, 12.155, 257.902



46, 4.454, 198.978



65, 37.935, 196.399



17, 15.583, 196.397

Previews

White Background



This preview shows how the CIELCh color 78, 14.956, 20.605 looks on a white background.

Color Contrast Check

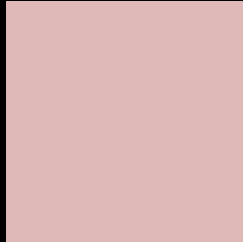
Large Text (above 18pt) WCAG AA × Fail

Any Text WCAG AA × Fail

Large Text (above 18pt) WCAG AAA × Fail

Any Text WCAG AAA × Fail

Black Background



This preview shows how the CIELCh color 78, 14.956, 20.605 looks on a black background.

Color Contrast Check

Large Text (above 18pt) WCAG AA ✓ Pass

Any Text WCAG AA ✓ Pass

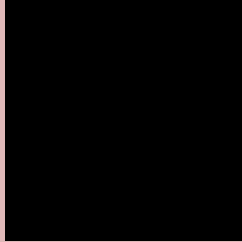
Large Text (above 18pt) WCAG AAA ✓ Pass

Any Text WCAG AAA ✓ Pass

If you want to check with other color combinations, try the [Color Contrast Checker](#).

CIELCh 78, 14.956, 20.605

Background



This preview shows how black text looks on a background with the CIELCh color 78, 14.956, 20.605.



This preview shows how white text looks on a background with the CIELCh color 78, 14.956, 20.605.

Color Blindness Simulation

Color vision deficiency is a very complex topic, and I could not describe the different causes any better than Wikipedia does, so if you want to learn more, you should check out their [article about color blindness](#).

Dichromacy



Original Color

78, 14.956, 20.605

Protanopia

78, 3.077, 63.243

Deuteranopia

78, 11.207, 28.413



Tritanopia
78, 17.395, 355.550

Trichromacy



Original Color
78, 14.956, 20.605

Protanomaly
78, 6.981, 33.076

Deuteranomaly
78, 12.691, 25.181

Tritanomaly
78, 16.190, 3.604

Monochromacy



Original Color
78, 14.956, 20.605

Achromatopsia
79, 0.010, 296.813

Achromatomaly
78, 5.229, 19.720

CSS Examples

Text

The CSS property to change the color of the text to CIELCh 78, 14.956, 20.605 is called "color". The color property can be set on classes, ids or directly on the HTML element.

This example shows how text in the color `rgb(223, 184, 184)` looks like.

```
.text, #text, p{  
    color:rgb(223, 184, 184)  
}
```

If you want to add a text shadow in that color use the text-shadow property, you can generate a text shadow directly with our [CSS Text Shadow Generator](#).

Here you see how black text with a 4 pixel rgb(223, 184, 184) colored shadow looks like.

```
.shadow{ text-shadow: 4px 4px 2px rgb(223, 184, 184) }
```

Border

The CSS property to change the border of an element to CIELCh 78, 14.956, 20.605 is called "border". The border property can be set on classes, ids or directly on the HTML element.

This example shows the color as border, it can be applied via the CSS property "border" or "border-color".

```
.border, #border, table{ border:4px solid rgb(223, 184, 184) }
```

If only the border color should be changed use the property `border-color`.

```
.border{ border-color:rgb(223, 184, 184) }
```

If you want to add a box shadow in that color use:

Here you see how a box with a 4 pixel `rgb(223, 184, 184)` colored shadow looks like.

```
.boxshadow{ -moz-box-shadow:4px 4px 4px  
4px rgb(223, 184, 184); -webkit-box-  
shadow:4px 4px 4px 4px rgb(223, 184, 184);  
box-shadow:4px 4px 4px 4px rgb(223, 184,  
184) }
```

Background

The CSS property to change the background color of an element to CIELCh 78, 14.956, 20.605 is called "background". The background property can be set on classes, ids or directly on the HTML element.

```
.background, #background, body{  
background: rgb(223, 184, 184) }
```

If only the background color should be changed can be used:

```
.background{ background-color: rgb(223,  
184, 184) }
```

This example shows the color as background, it is applied via the CSS property "background".

To optimize and compress your CSS code, you can use our [online CSS compressor and optimizer](#) based on csstidy. If you want to create a linear or radial gradient as background or border, check our [CSS Gradient Generator](#).

Hey! You found this booklet interesting? Support Converting Colors with the new Membership Option!

The pro membership hides all ads, plus gives you double the colors in the color bucket, and more awesome pro features!

[Learn more, Memberships starting at \\$2.50/m!](#)

**Follow me
on Twitter!**

@ConvertingColor