

Converting Colors

CIELCh(78, 16.419, 15.487)

Have a look what the booklet for
CIELCh(78, 16.419, 15.487) contains.

CIELCh(78, 16.535, 15.258)	3
<i>Conversions</i>	4
<i>Details</i>	6
<i>Harmonies</i>	11
<i>Previews</i>	20
<i>Color Blindness Simulation</i>	23
<i>CSS Examples</i>	26

Color

CIELCh(78, 16.535, 15.258)

Conversions

Conversions Part 1

Format	Color
Hex	E1B6B9
RGB	225, 182, 185
RGB Percent	88%, 71%, 73%
CMY	0.1160, 0.2847, 0.2730
CMYK	0.00, 0.19, 0.18, 0.12
HSL	356°, 42%, 80%
HSV	356°, 19%, 88%
XYZ	56.7885, 53.2120, 53.3961
YIQ	195.1990, 24.6650, 10.0490

Conversions

Conversions Part 2

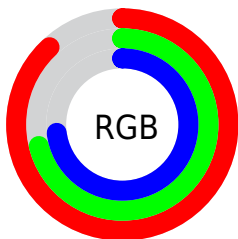
Format	Color
R _Y B	225, 182, 185
Decimal	14792377
CIE Lab	78.00, 15.95, 4.35
CIE LCh	78, 16.535, 15.258
Yxy	53.2120, 0.3475, 0.3257
Android (android.graphics.Color)	4292982457 (0xFFE1B6B9)
YUV	195.1990, -5.0281, 26.1355
Hunter-Lab	72.9466, 11.3047, 7.6629

Details

The CIELCh color **78, 16.535, 15.258** is a light color, and the websafe version is hex **FFCCCC**. A complement of this color would be **87, 14.829, 192.311**, and the grayscale version is **79, 0.010, 296.813**.

A 20% lighter version of the original color is **95, 6.267, 5.571**, and **58, 16.454, 15.312** is the 20% darker color. If you saturate the color by 10%, you get **72, 26.047, 16.468**, and if you desaturate by 10%, it is **84, 7.600, 14.269**.

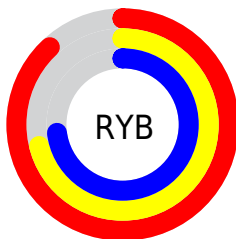
Distribution



Red (88%)

Green (71%)

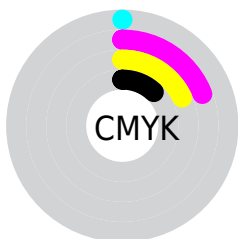
Blue (73%)



Red (88%)

Yellow (71%)

Blue (73%)

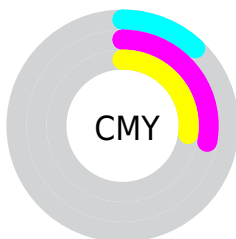


Cyan (0%)

Magenta (19%)

Yellow (18%)

Black (12%)



Cyan (12%)

Magenta (28%)

Yellow (27%)


Brightness & Saturation Gradients

These gradients show how the CIELCh color 78, 16.535, 15.258 changes by changing the brightness by 10 percent. The first figure shows a shift by +10% for each color and the second figure -10%.

Similar to the brightness gradients but the following saturation gradients show a change of the CIELCh color 78, 16.535, 15.258 by changing the saturation by 10% instead.

 78, 16.535, 15.258

 78, 16.535, 15.258

 100, 16.535,
15.258

 68, 16.535, 15.258

 98, 16.535, 15.258

 58, 16.535, 15.258

 48, 16.535, 15.258

 38, 16.535, 15.258

 28, 16.535, 15.258

 18, 16.535, 15.258

 8, 16.535, 15.258

 0, 16.535, 15.258

 78, 16.535, 15.258

 78, 16.535, 15.258

72, 26.047, 16.468

84, 7.600, 14.269

67, 36.068, 17.981

90, 0.739, 194.373

61, 46.436, 19.913

97, 8.508, 192.999

57, 56.893, 22.388

98, 10.036,
198.838

53, 67.101, 25.523

50, 76.691, 29.346

48, 85.231, 33.616

47, 91.943, 37.481

47, 92.453, 37.741

Harmonies

Complementary

The Complementary color scheme is a pair of colors which are on the opposite of each other on the color wheel.



78, 16.535, 15.258



87, 14.829, 192.311

Rectangle

The Rectangle color scheme consists of four colors that form a rectangle on the color wheel.



78, 16.535, 15.258



78, 16.535, 65.258



78, 16.535, 195.258



78, 16.535, 245.258

Sweetspot

The Sweet Spot groups the original color and five complimentary colors.



78, 16.533, 15.265



96, 5.491, 13.976



79, 26.948, 323.119



51, 3.650, 14.041



0, 0.000, 0.000



53, 0.007, 296.813

Same Dimension

The Same Dimension uses a secret algorithm to generate beautiful new colors.



78, 16.533, 15.265



85, 22.330, 15.724



82, 13.564, 63.837



44, 4.740, 14.303



36, 76.235, 37.121



6, 25.392, 18.008

Inverse Universe

The Inverse Universe completely reimagines the original color for something new.



78, 16.533, 15.265



85, 22.330, 15.724



82, 12.559, 248.371



44, 4.740, 14.303



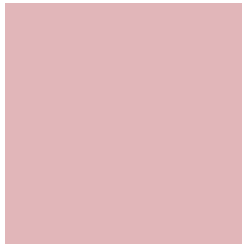
36, 76.235, 37.121



6, 25.392, 18.008

Previews

White Background



This preview shows how the CIELCh color 78, 16.535, 15.258 looks on a white background.

Color Contrast Check

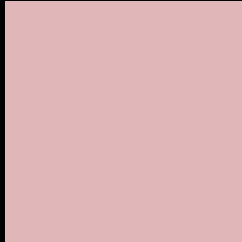
Large Text (above 18pt) WCAG AA × Fail

Any Text WCAG AA × Fail

Large Text (above 18pt) WCAG AAA × Fail

Any Text WCAG AAA × Fail

Black Background



This preview shows how the CIELCh color 78, 16.535, 15.258 looks on a black background.

Color Contrast Check

Large Text (above 18pt) WCAG AA ✓ Pass

Any Text WCAG AA ✓ Pass

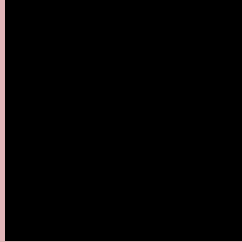
Large Text (above 18pt) WCAG AAA ✓ Pass

Any Text WCAG AAA ✓ Pass

If you want to check with other color combinations, try the [Color Contrast Checker](#).

CIELCh 78, 16.535, 15.258

Background



This preview shows how black text looks on a background with the CIELCh color 78, 16.535, 15.258.



This preview shows how white text looks on a background with the CIELCh color 78, 16.535, 15.258.

Color Blindness Simulation

Color vision deficiency is a very complex topic, and I could not describe the different causes any better than Wikipedia does, so if you want to learn more, you should check out their [article about color blindness](#).

Dichromacy



Original Color

78, 16.535, 15.258

Protanopia

78, 1.922, 35.386

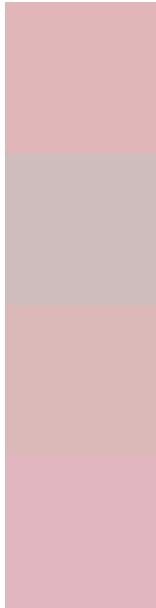
Deuteranopia

78, 10.719, 25.892



Tritanopia
78, 18.798, 357.721

Trichromacy



Original Color
78, 16.535, 15.258

Protanomaly
78, 6.760, 19.870

Deuteranomaly
78, 12.982, 20.430

Tritanomaly
78, 17.437, 3.169

Monochromacy



Original Color
78, 16.535, 15.258

Achromatopsia
79, 0.010, 296.813

Achromatomaly
79, 6.002, 14.714

CSS Examples

Text

The CSS property to change the color of the text to CIELCh 78, 16.535, 15.258 is called "color". The color property can be set on classes, ids or directly on the HTML element.

This example shows how text in the color `rgb(225, 182, 185)` looks like.

```
.text, #text, p{  
    color:rgb(225, 182, 185)  
}
```

If you want to add a text shadow in that color use the text-shadow property, you can generate a text shadow directly with our [CSS Text Shadow Generator](#).

Here you see how black text with a 4 pixel rgb(225, 182, 185) colored shadow looks like.

```
.shadow{ text-shadow: 4px 4px 2px rgb(225, 182, 185) }
```

Border

The CSS property to change the border of an element to CIELCh 78, 16.535, 15.258 is called "border". The border property can be set on classes, ids or directly on the HTML element.

This example shows the color as border, it can be applied via the CSS property "border" or "border-color".

```
.border, #border, table{ border:4px solid rgb(225, 182, 185) }
```

If only the border color should be changed use the property `border-color`.

```
.border{ border-color:rgb(225, 182, 185) }
```

If you want to add a box shadow in that color use:

Here you see how a box with a 4 pixel `rgb(225, 182, 185)` colored shadow looks like.

```
.boxshadow{ -moz-box-shadow:4px 4px 4px 4px rgb(225, 182, 185); -webkit-box-shadow:4px 4px 4px 4px rgb(225, 182, 185); box-shadow:4px 4px 4px 4px rgb(225, 182, 185) }
```

Background

The CSS property to change the background color of an element to CIELCh 78, 16.535, 15.258 is called "background". The background property can be set on classes, ids or directly on the HTML element.

```
.background, #background, body{  
background: rgb(225, 182, 185) }
```

If only the background color should be changed can be used:

```
.background{ background-color: rgb(225,  
182, 185) }
```

This example shows the color as background, it is applied via the CSS property "background".

To optimize and compress your CSS code, you can use our [online CSS compressor and optimizer](#) based on csstidy. If you want to create a linear or radial gradient as background or border, check our [CSS Gradient Generator](#).

Hey! You found this booklet interesting? Support Converting Colors with the new Membership Option!

The pro membership hides all ads, plus gives you double the colors in the color bucket, and more awesome pro features!

[Learn more, Memberships starting at \\$2.50/m!](#)

**Follow me
on Twitter!**

@ConvertingColor