

Converting Colors

CIELCh(78, 16.639, 7.432)

Have a look what the booklet for
CIELCh(78, 16.639, 7.432) contains.

CIELCh(78, 16.739, 7.997)	3
<i>Conversions</i>	4
<i>Details</i>	6
<i>Harmonies</i>	11
<i>Previews</i>	20
<i>Color Blindness Simulation</i>	23
<i>CSS Examples</i>	26

Color

CIELCh(78, 16.739, 7.997)

Conversions

Conversions Part 1

Format	Color
Hex	E1B6BD
RGB	225, 182, 189
RGB Percent	88%, 71%, 74%
CMY	0.1172, 0.2858, 0.2583
CMYK	0.00, 0.19, 0.16, 0.12
HSL	350°, 42%, 80%
HSV	350°, 19%, 88%
XYZ	57.0413, 53.2120, 55.4770
YIQ	195.6550, 23.3810, 11.2930

Conversions

Conversions Part 2

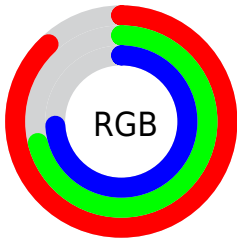
Format	Color
R _Y B	225, 182, 189
Decimal	14792381
CIE Lab	78.00, 16.58, 2.33
CIE LCh	78, 16.739, 7.997
Yxy	53.2120, 0.3442, 0.3211
Android (android.graphics.Color)	4292982461 (0xFFE1B6BD)
YUV	195.6550, -3.2809, 25.7356
Hunter-Lab	72.9466, 11.9234, 5.9716

Details

The CIELCh color **78, 16.739, 7.997** is a light color, and the websafe version is hex **FFCCCC**. A complement of this color would be **86, 15.357, 184.504**, and the grayscale version is **79, 0.010, 296.813**.

A 20% lighter version of the original color is **96, 7.041, 349.220**, and **58, 16.648, 7.570** is the 20% darker color. If you saturate the color by 10%, you get **72, 26.170, 9.307**, and if you desaturate by 10%, it is **84, 7.752, 6.893**.

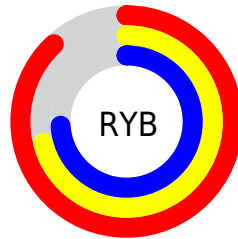
Distribution



Red (88%)

Green (71%)

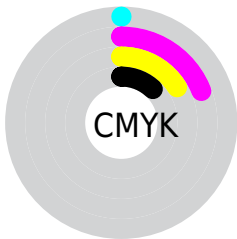
Blue (74%)



Red (88%)

Yellow (71%)

Blue (74%)

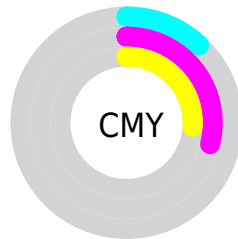


Cyan (0%)

Magenta (19%)

Yellow (16%)

Black (12%)



Cyan (12%)

Magenta (29%)

Yellow (26%)

Brightness & Saturation Gradients

These gradients show how the CIELCh color 78, 16.739, 7.997 changes by changing the brightness by 10 percent. The first figure shows a shift by +10% for each color and the second figure -10%.

Similar to the brightness gradients but the following saturation gradients show a change of the CIELCh color 78, 16.739, 7.997 by changing the saturation by 10% instead.

 78, 16.739, 7.997  78, 16.739, 7.997

 100, 16.739, 7.997  68, 16.739, 7.997

 98, 16.739, 7.997  58, 16.739, 7.997

 48, 16.739, 7.997

 38, 16.739, 7.997

 28, 16.739, 7.997

 18, 16.739, 7.997

 8, 16.739, 7.997

 0, 16.739, 7.997

 78, 16.739, 7.997  78, 16.739, 7.997

72, 26.170, 9.307

84, 7.752, 6.893

67, 35.941, 10.901

90, 0.739, 186.834

62, 45.848, 12.891

96, 8.737, 185.357

57, 55.590, 15.409

98, 10.131,
198.831

53, 64.804, 18.604

50, 73.153, 22.591

48, 80.458, 27.343

47, 86.763, 32.408

47, 87.316, 32.820

Harmonies

Complementary

The Complementary color scheme is a pair of colors which are on the opposite of each other on the color wheel.



78, 16.739, 7.997



86, 15.357, 184.504

Rectangle

The Rectangle color scheme consists of four colors that form a rectangle on the color wheel.



78, 16.739, 7.997



78, 16.739, 57.997



78, 16.739, 187.997



78, 16.739, 237.997

Sweetspot

The Sweet Spot groups the original color and five complimentary colors.



78, 16.737, 8.003



96, 5.605, 6.563



78, 26.337, 320.663



51, 3.725, 6.636



0, 0.000, 0.000



53, 0.007, 296.813

Same Dimension

The Same Dimension uses a secret algorithm to generate beautiful new colors.



78, 16.737, 8.003



85, 22.541, 8.503



81, 13.449, 54.186



44, 4.829, 6.930



37, 71.973, 31.913



6, 25.290, 14.059

Inverse Universe

The Inverse Universe completely reimagines the original color for something new.



78, 16.737, 8.003



85, 22.541, 8.503



83, 12.151, 237.648



44, 4.829, 6.930



37, 71.973, 31.913



6, 25.290, 14.059

Previews

White Background



This preview shows how the CIELCh color 78, 16.739, 7.997 looks on a white background.

Color Contrast Check

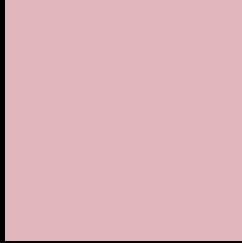
Large Text (above 18pt) WCAG AA × Fail

Any Text WCAG AA × Fail

Large Text (above 18pt) WCAG AAA × Fail

Any Text WCAG AAA × Fail

Black Background



This preview shows how the CIELCh color 78, 16.739, 7.997 looks on a black background.

Color Contrast Check

Large Text (above 18pt) WCAG AA ✓ Pass

Any Text WCAG AA ✓ Pass

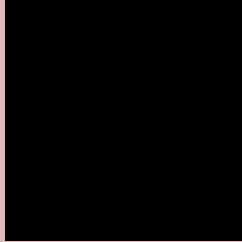
Large Text (above 18pt) WCAG AAA ✓ Pass

Any Text WCAG AAA ✓ Pass

If you want to check with other color combinations, try the [Color Contrast Checker](#).

CIELCh 78, 16.739, 7.997

Background



This preview shows how black text looks on a background with the CIELCh color 78, 16.739, 7.997.



This preview shows how white text looks on a background with the CIELCh color 78, 16.739, 7.997.

Color Blindness Simulation

Color vision deficiency is a very complex topic, and I could not describe the different causes any better than Wikipedia does, so if you want to learn more, you should check out their [article about color blindness](#).

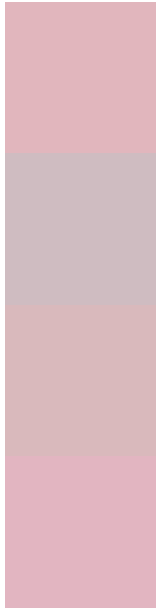
Dichromacy





Tritanopia
78, 18.449, 357.208

Trichromacy



Original Color
78, 16.739, 7.997

Protanomaly
78, 7.582, 359.371

Deuteranomaly
78, 12.231, 12.897

Tritanomaly
78, 18.106, 0.346

Monochromacy



Original Color
78, 16.739, 7.997

Achromatopsia
79, 0.010, 296.813

Achromatomaly
79, 6.065, 9.702

CSS Examples

Text

The CSS property to change the color of the text to CIELCh 78, 16.739, 7.997 is called "color". The color property can be set on classes, ids or directly on the HTML element.

This example shows how text in the color `rgb(225, 182, 189)` looks like.

```
.text, #text, p{  
    color:rgb(225, 182, 189)  
}
```

If you want to add a text shadow in that color use the text-shadow property, you can generate a text shadow directly with our [CSS Text Shadow Generator](#).

Here you see how black text with a 4 pixel rgb(225, 182, 189) colored shadow looks like.

```
.shadow{ text-shadow: 4px 4px 2px rgb(225, 182, 189) }
```

Border

The CSS property to change the border of an element to CIELCh 78, 16.739, 7.997 is called "border". The border property can be set on classes, ids or directly on the HTML element.

This example shows the color as border, it can be applied via the CSS property "border" or "border-color".

```
.border, #border, table{ border:4px solid rgb(225, 182, 189) }
```

If only the border color should be changed use the property `border-color`.

```
.border{ border-color:rgb(225, 182, 189) }
```

If you want to add a box shadow in that color use:

Here you see how a box with a 4 pixel `rgb(225, 182, 189)` colored shadow looks like.

```
.boxshadow{ -moz-box-shadow:4px 4px 4px  
4px rgb(225, 182, 189); -webkit-box-  
shadow:4px 4px 4px 4px rgb(225, 182, 189);  
box-shadow:4px 4px 4px 4px rgb(225, 182,  
189) }
```

Background

The CSS property to change the background color of an element to CIELCh 78, 16.739, 7.997 is called "background". The background property can be set on classes, ids or directly on the HTML element.

```
.background, #background, body{  
background: rgb(225, 182, 189) }
```

If only the background color should be changed can be used:

```
.background{ background-color: rgb(225,  
182, 189) }
```

This example shows the color as background, it is applied via the CSS property "background".

To optimize and compress your CSS code, you can use our [online CSS compressor and optimizer](#) based on csstidy. If you want to create a linear or radial gradient as background or border, check our [CSS Gradient Generator](#).

Hey! You found this booklet interesting? Support Converting Colors with the new Membership Option!

The pro membership hides all ads, plus gives you double the colors in the color bucket, and more awesome pro features!

[Learn more, Memberships starting at \\$2.50/m!](#)

**Follow me
on Twitter!**

@ConvertingColor