

Converting Colors

CIELCh(78, 17.478, 20.836)

Have a look what the booklet for
CIELCh(78, 17.478, 20.836) contains.

CIELCh(78, 17.359, 20.822)	3
<i>Conversions</i>	4
<i>Details</i>	6
<i>Harmonies</i>	11
<i>Previews</i>	20
<i>Color Blindness Simulation</i>	23
<i>CSS Examples</i>	26

Color

CIELCh(78, 17.359, 20.822)

Conversions

Conversions Part 1

Format	Color
Hex	E3B6B6
RGB	227, 182, 182
RGB Percent	89%, 71%, 71%
CMY	0.1095, 0.2860, 0.2860
CMYK	0.00, 0.20, 0.20, 0.11
HSL	0°, 45%, 80%
HSV	0°, 20%, 89%
XYZ	56.8990, 53.2120, 51.5698
YIQ	195.4550, 26.8200, 9.5400

Conversions

Conversions Part 2

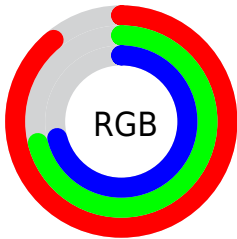
Format	Color
R _Y B	227, 182, 182
Decimal	14923446
CIE Lab	78.00, 16.23, 6.17
CIE LCh	78, 17.359, 20.822
Yxy	53.2120, 0.3519, 0.3291
Android (android.graphics.Color)	4293113526 (0xFFE3B6B6)
YUV	195.4550, -6.6333, 27.6650
Hunter-Lab	72.9466, 11.5753, 9.1473

Details

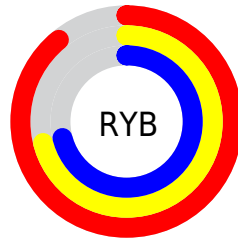
The CIELCh color **78, 17.359, 20.822** is a light color, and the websafe version is hex **FFCCCC**. A complement of this color would be **87, 15.231, 198.410**, and the grayscale version is **79, 0.010, 296.813**.

A 20% lighter version of the original color is **95, 6.091, 19.713**, and **58, 17.368, 21.251** is the 20% darker color. If you saturate the color by 10%, you get **72, 27.136, 21.909**, and if you desaturate by 10%, it is **84, 8.266, 19.971**.

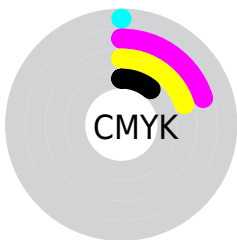
Distribution



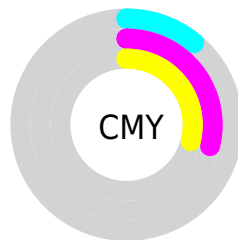
- Red (89%)
- Green (71%)
- Blue (71%)



- Red (89%)
- Yellow (71%)
- Blue (71%)



- Cyan (0%)
- Magenta (20%)
- Yellow (20%)
- Black (11%)



- Cyan (11%)
- Magenta (29%)
- Yellow (29%)

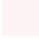
Brightness & Saturation Gradients

These gradients show how the CIELCh color 78, 17.359, 20.822 changes by changing the brightness by 10 percent. The first figure shows a shift by +10% for each color and the second figure -10%.

Similar to the brightness gradients but the following saturation gradients show a change of the CIELCh color 78, 17.359, 20.822 by changing the saturation by 10% instead.

 78, 17.359, 20.822

 78, 17.359, 20.822

 100, 17.359,
20.822

 68, 17.359, 20.822

 98, 17.359, 20.822

 58, 17.359, 20.822

 48, 17.359, 20.822

 38, 17.359, 20.822

 28, 17.359, 20.822

 18, 17.359, 20.822

 8, 17.359, 20.822

 0, 17.359, 20.822

 78, 17.359, 20.822

 78, 17.359, 20.822

72, 27.136, 21.909

84, 8.266, 19.971

66, 37.549, 23.313

90, 0.146, 203.557

61, 48.457, 25.149

97, 7.920, 198.988

57, 59.613, 27.528

98, 9.487, 198.876

53, 70.656, 30.519

50, 81.074, 34.021

48, 89.896, 37.489

47, 95.696, 39.957

47, 95.798, 40.001

Harmonies

Complementary

The Complementary color scheme is a pair of colors which are on the opposite of each other on the color wheel.



78, 17.359, 20.822



87, 15.231, 198.410

Rectangle

The Rectangle color scheme consists of four colors that form a rectangle on the color wheel.



78, 17.359, 20.822



78, 17.359, 70.822



78, 17.359, 200.822



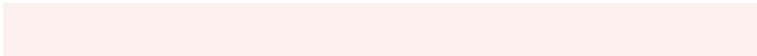
78, 17.359, 250.822

Sweetspot

The Sweet Spot groups the original color and five complimentary colors.



78, 17.357, 20.829



96, 5.467, 19.664



79, 28.846, 325.520



51, 3.636, 19.720



0, 0.000, 0.000



53, 0.007, 296.813

Same Dimension

The Same Dimension uses a secret algorithm to generate beautiful new colors.



78, 17.357, 20.829



84, 23.485, 21.264



84, 14.711, 72.949



45, 4.816, 19.943



37, 79.983, 39.973



6, 27.103, 21.762

Inverse Universe

The Inverse Universe completely reimagines the original color for something new.



87, 15.231, 198.410



96, 19.971, 198.198



81, 13.961, 258.284



47, 4.536, 198.977



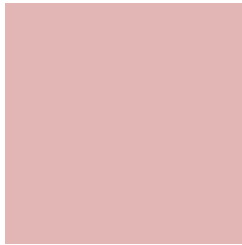
66, 38.341, 196.401



18, 16.090, 196.399

Previews

White Background



This preview shows how the CIELCh color 78, 17.359, 20.822 looks on a white background.

Color Contrast Check

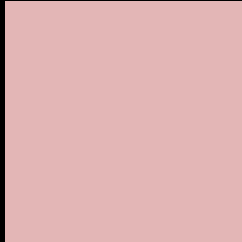
Large Text (above 18pt) WCAG AA × Fail

Any Text WCAG AA × Fail

Large Text (above 18pt) WCAG AAA × Fail

Any Text WCAG AAA × Fail

Black Background



This preview shows how the CIELCh color 78, 17.359, 20.822 looks on a black background.

Color Contrast Check

Large Text (above 18pt) WCAG AA ✓ Pass

Any Text WCAG AA ✓ Pass

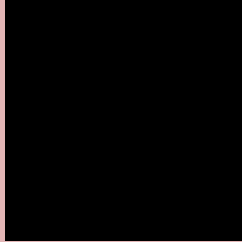
Large Text (above 18pt) WCAG AAA ✓ Pass

Any Text WCAG AAA ✓ Pass

If you want to check with other color combinations, try the [Color Contrast Checker](#).

CIELCh 78, 17.359, 20.822

Background



This preview shows how black text looks on a background with the CIELCh color 78, 17.359, 20.822.

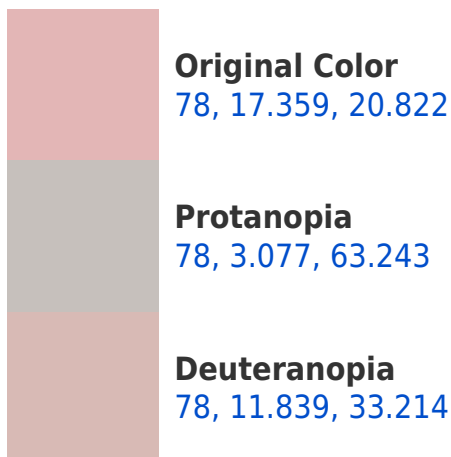


This preview shows how white text looks on a background with the CIELCh color 78, 17.359, 20.822.

Color Blindness Simulation

Color vision deficiency is a very complex topic, and I could not describe the different causes any better than Wikipedia does, so if you want to learn more, you should check out their [article about color blindness](#).

Dichromacy





Tritanopia
78, 19.874, 359.170

Trichromacy



Original Color
78, 17.359, 20.822

Protanomaly
78, 8.015, 27.596

Deuteranomaly
78, 13.660, 29.369

Tritanomaly
78, 18.450, 5.992

Monochromacy



Original Color
78, 17.359, 20.822

Achromatopsia
79, 0.010, 296.813

Achromatomaly
79, 5.986, 19.793

CSS Examples

Text

The CSS property to change the color of the text to CIELCh 78, 17.359, 20.822 is called "color". The color property can be set on classes, ids or directly on the HTML element.

This example shows how text in the color `rgb(227, 182, 182)` looks like.

```
.text, #text, p{  
    color:rgb(227, 182, 182)  
}
```

If you want to add a text shadow in that color use the text-shadow property, you can generate a text shadow directly with our [CSS Text Shadow Generator](#).

Here you see how black text with a 4 pixel rgb(227, 182, 182) colored shadow looks like.

```
.shadow{ text-shadow: 4px 4px 2px rgb(227, 182, 182) }
```

Border

The CSS property to change the border of an element to CIELCh 78, 17.359, 20.822 is called "border". The border property can be set on classes, ids or directly on the HTML element.

This example shows the color as border, it can be applied via the CSS property "border" or "border-color".

```
.border, #border, table{ border:4px solid rgb(227, 182, 182) }
```

If only the border color should be changed use the property `border-color`.

```
.border{ border-color:rgb(227, 182, 182) }
```

If you want to add a box shadow in that color use:

Here you see how a box with a 4 pixel `rgb(227, 182, 182)` colored shadow looks like.

```
.boxshadow{ -moz-box-shadow:4px 4px 4px 4px rgb(227, 182, 182); -webkit-box-shadow:4px 4px 4px 4px rgb(227, 182, 182); box-shadow:4px 4px 4px 4px rgb(227, 182, 182) }
```

Background

The CSS property to change the background color of an element to CIELCh 78, 17.359, 20.822 is called "background". The background property can be set on classes, ids or directly on the HTML element.

```
.background, #background, body{  
background: rgb(227, 182, 182) }
```

If only the background color should be changed can be used:

```
.background{ background-color: rgb(227,  
182, 182) }
```

This example shows the color as background, it is applied via the CSS property "background".

To optimize and compress your CSS code, you can use our [online CSS compressor and optimizer](#) based on csstidy. If you want to create a linear or radial gradient as background or border, check our [CSS Gradient Generator](#).

Hey! You found this booklet interesting? Support Converting Colors with the new Membership Option!

The pro membership hides all ads, plus gives you double the colors in the color bucket, and more awesome pro features!

[Learn more, Memberships starting at \\$2.50/m!](#)

**Follow me
on Twitter!**

@ConvertingColor