

Converting Colors

CIELCh(78, 17.536, 12.019)

Have a look what the booklet for
CIELCh(78, 17.536, 12.019) contains.

CIELCh(78, 17.373, 12.092)	3
<i>Conversions</i>	4
<i>Details</i>	6
<i>Harmonies</i>	11
<i>Previews</i>	20
<i>Color Blindness Simulation</i>	23
<i>CSS Examples</i>	26

Color

CIELCh(78, 17.373, 12.092)

Conversions

Conversions Part 1

Format	Color
Hex	E3B6BB
RGB	227, 182, 187
RGB Percent	89%, 71%, 73%
CMY	0.1109, 0.2873, 0.2677
CMYK	0.00, 0.20, 0.18, 0.11
HSL	353°, 44%, 80%
HSV	353°, 20%, 89%
XYZ	57.2084, 53.2120, 54.1227
YIQ	196.0250, 25.2150, 11.0950

Conversions

Conversions Part 2

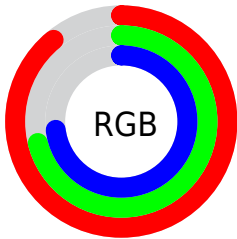
Format	Color
R _Y B	227, 182, 187
Decimal	14923451
CIE Lab	78.00, 16.99, 3.64
CIE LCh	78, 17.373, 12.092
Yxy	53.2120, 0.3477, 0.3234
Android (android.graphics.Color)	4293113531 (0xFFE3B6BB)
YUV	196.0250, -4.4493, 27.1651
Hunter-Lab	72.9466, 12.3322, 7.0724

Details

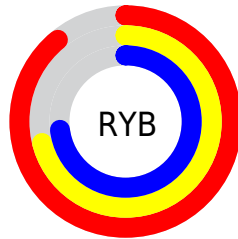
The CIELCh color $78, 17.373, 12.092$ is a light color, and the websafe version is hex `FFCCCC`. A complement of this color would be $87, 15.674, 188.708$, and the grayscale version is $79, 0.010, 296.813$.

A 20% lighter version of the original color is $96, 6.585, 356.912$, and $58, 17.333, 11.992$ is the 20% darker color. If you saturate the color by 10%, you get $72, 26.915, 13.379$, and if you desaturate by 10%, it is $84, 8.346, 11.029$.

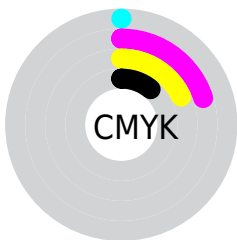
Distribution



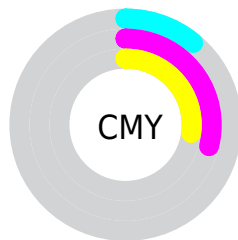
- Red (89%)
- Green (71%)
- Blue (73%)



- Red (89%)
- Yellow (71%)
- Blue (73%)



- Cyan (0%)
- Magenta (20%)
- Yellow (18%)
- Black (11%)



- Cyan (11%)
- Magenta (29%)
- Yellow (27%)


Brightness & Saturation Gradients

These gradients show how the CIELCh color 78, 17.373, 12.092 changes by changing the brightness by 10 percent. The first figure shows a shift by +10% for each color and the second figure -10%.

Similar to the brightness gradients but the following saturation gradients show a change of the CIELCh color 78, 17.373, 12.092 by changing the saturation by 10% instead.

 78, 17.373, 12.092

 78, 17.373, 12.092

 100, 17.373,
12.092

 68, 17.373, 12.092

 98, 17.373, 12.092

 58, 17.373, 12.092

 48, 17.373, 12.092

 38, 17.373, 12.092

 28, 17.373, 12.092

 18, 17.373, 12.092

 8, 17.373, 12.092

 0, 17.373, 12.092

 78, 17.373, 12.092

 78, 17.373, 12.092

72, 26.915, 13.379

84, 8.346, 11.029

67, 36.882, 14.971

90, 0.129, 194.806

61, 47.085, 16.983

97, 8.062, 189.597

57, 57.240, 19.546

98, 9.604, 198.868

53, 66.995, 22.793

50, 76.012, 26.787

48, 84.011, 31.372

47, 90.679, 35.822

47, 90.777, 35.881

Harmonies

Complementary

The Complementary color scheme is a pair of colors which are on the opposite of each other on the color wheel.



78, 17.373, 12.092



87, 15.674, 188.708

Rectangle

The Rectangle color scheme consists of four colors that form a rectangle on the color wheel.



78, 17.373, 12.092



78, 17.373, 62.092



78, 17.373, 192.092



78, 17.373, 242.092

Sweetspot

The Sweet Spot groups the original color and five complimentary colors.



78, 17.371, 12.098



96, 5.530, 10.640



79, 27.900, 322.185



51, 3.676, 10.709



0, 0.000, 0.000



53, 0.007, 296.813

Same Dimension

The Same Dimension uses a secret algorithm to generate beautiful new colors.



78, 17.371, 12.098



84, 23.421, 12.619



82, 14.109, 59.932



44, 4.770, 10.988



37, 74.426, 35.090



6, 25.333, 16.254

Inverse Universe

The Inverse Universe completely reimagines the original color for something new.



78, 17.371, 12.098



84, 23.421, 12.619



83, 12.879, 244.270



44, 4.770, 10.988



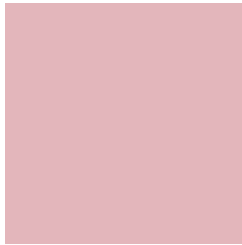
37, 74.426, 35.090



6, 25.333, 16.254

Previews

White Background



This preview shows how the CIELCh color 78, 17.373, 12.092 looks on a white background.

Color Contrast Check

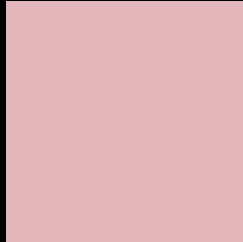
Large Text (above 18pt) WCAG AA × Fail

Any Text WCAG AA × Fail

Large Text (above 18pt) WCAG AAA × Fail

Any Text WCAG AAA × Fail

Black Background



This preview shows how the CIELCh color 78, 17.373, 12.092 looks on a black background.

Color Contrast Check

Large Text (above 18pt) WCAG AA ✓ Pass

Any Text WCAG AA ✓ Pass

Large Text (above 18pt) WCAG AAA ✓ Pass

Any Text WCAG AAA ✓ Pass

If you want to check with other color combinations, try the [Color Contrast Checker](#).

CIELCh 78, 17.373, 12.092

Background



This preview shows how black text looks on a background with the CIELCh color 78, 17.373, 12.092.

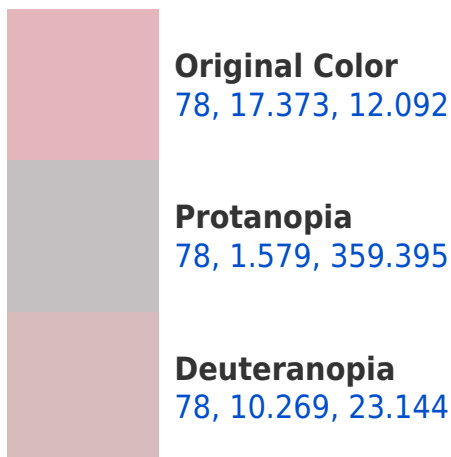


This preview shows how white text looks on a background with the CIELCh color 78, 17.373, 12.092.

Color Blindness Simulation

Color vision deficiency is a very complex topic, and I could not describe the different causes any better than Wikipedia does, so if you want to learn more, you should check out their [article about color blindness](#).

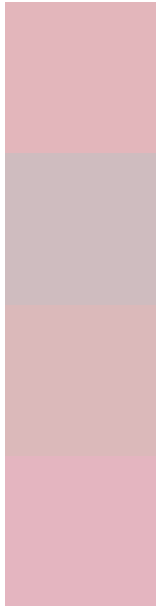
Dichromacy





Tritanopia
78, 19.149, 358.216

Trichromacy



Original Color
78, 17.373, 12.092

Protanomaly
78, 7.294, 7.270

Deuteranomaly
78, 12.965, 18.091

Tritanomaly
78, 18.686, 2.811

Monochromacy



Original Color
78, 17.373, 12.092

Achromatopsia
79, 0.010, 296.813

Achromatomaly
79, 6.065, 9.702

CSS Examples

Text

The CSS property to change the color of the text to CIELCh 78, 17.373, 12.092 is called "color". The color property can be set on classes, ids or directly on the HTML element.

This example shows how text in the color `rgb(227, 182, 187)` looks like.

```
.text, #text, p{  
    color:rgb(227, 182, 187)  
}
```

If you want to add a text shadow in that color use the text-shadow property, you can generate a text shadow directly with our [CSS Text Shadow Generator](#).

Here you see how black text with a 4 pixel rgb(227, 182, 187) colored shadow looks like.

```
.shadow{ text-shadow: 4px 4px 2px rgb(227, 182, 187) }
```

Border

The CSS property to change the border of an element to CIELCh 78, 17.373, 12.092 is called "border". The border property can be set on classes, ids or directly on the HTML element.

This example shows the color as border, it can be applied via the CSS property "border" or "border-color".

```
.border, #border, table{ border:4px solid rgb(227, 182, 187) }
```

If only the border color should be changed use the property `border-color`.

```
.border{ border-color:rgb(227, 182, 187) }
```

If you want to add a box shadow in that color use:

Here you see how a box with a 4 pixel `rgb(227, 182, 187)` colored shadow looks like.

```
.boxshadow{ -moz-box-shadow:4px 4px 4px  
4px rgb(227, 182, 187); -webkit-box-  
shadow:4px 4px 4px 4px rgb(227, 182, 187);  
box-shadow:4px 4px 4px 4px rgb(227, 182,  
187) }
```

Background

The CSS property to change the background color of an element to CIELCh 78, 17.373, 12.092 is called "background". The background property can be set on classes, ids or directly on the HTML element.

```
.background, #background, body{  
background: rgb(227, 182, 187) }
```

If only the background color should be changed can be used:

```
.background{ background-color: rgb(227,  
182, 187) }
```

This example shows the color as background, it is applied via the CSS property "background".

To optimize and compress your CSS code, you can use our [online CSS compressor and optimizer](#) based on csstidy. If you want to create a linear or radial gradient as background or border, check our [CSS Gradient Generator](#).

Hey! You found this booklet interesting? Support Converting Colors with the new Membership Option!

The pro membership hides all ads, plus gives you double the colors in the color bucket, and more awesome pro features!

[Learn more, Memberships starting at \\$2.50/m!](#)

**Follow me
on Twitter!**

@ConvertingColor