

Converting Colors

CIELCh(78, 17.577, 16.230)

Have a look what the booklet for
CIELCh(78, 17.577, 16.230) contains.

CIELCh(78, 17.314, 17.330)	3
<i>Conversions</i>	4
<i>Details</i>	6
<i>Harmonies</i>	11
<i>Previews</i>	20
<i>Color Blindness Simulation</i>	23
<i>CSS Examples</i>	26

Color

CIELCh(78, 17.314, 17.330)

Conversions

Conversions Part 1

Format	Color
Hex	E3B6B8
RGB	227, 182, 184
RGB Percent	89%, 71%, 72%
CMY	0.1100, 0.2865, 0.2786
CMYK	0.00, 0.20, 0.19, 0.11
HSL	357°, 44%, 80%
HSV	357°, 20%, 89%
XYZ	57.0218, 53.2120, 52.5817
YIQ	195.6830, 26.1780, 10.1620

Conversions

Conversions Part 2

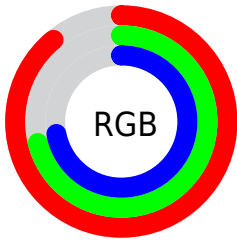
Format	Color
R _Y B	227, 182, 184
Decimal	14923448
CIE Lab	78.00, 16.53, 5.16
CIE LCh	78, 17.314, 17.330
Yxy	53.2120, 0.3502, 0.3268
Android (android.graphics.Color)	4293113528 (0xFFE3B6B8)
YUV	195.6830, -5.7597, 27.4650
Hunter-Lab	72.9466, 11.8756, 8.3248

Details

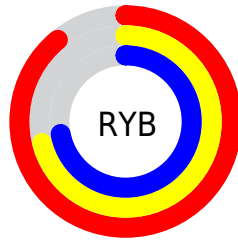
The CIELCh color **78, 17.314, 17.330** is a light color, and the websafe version is hex **FFCCCC**. A complement of this color would be **87, 15.358, 194.465**, and the grayscale version is **79, 0.010, 296.813**.

A 20% lighter version of the original color is **95, 6.166, 10.185**, and **58, 17.296, 17.554** is the 20% darker color. If you saturate the color by 10%, you get **72, 26.971, 18.515**, and if you desaturate by 10%, it is **84, 8.273, 16.377**.

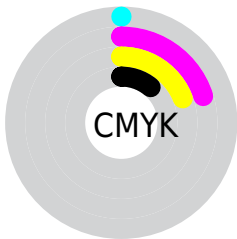
Distribution



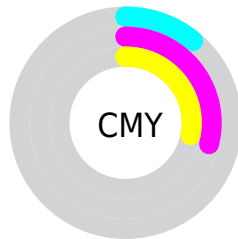
- Red (89%)
- Green (71%)
- Blue (72%)



- Red (89%)
- Yellow (71%)
- Blue (72%)



- Cyan (0%)
- Magenta (20%)
- Yellow (19%)
- Black (11%)



- Cyan (11%)
- Magenta (29%)
- Yellow (28%)


Brightness & Saturation Gradients

These gradients show how the CIELCh color 78, 17.314, 17.330 changes by changing the brightness by 10 percent. The first figure shows a shift by +10% for each color and the second figure -10%.

Similar to the brightness gradients but the following saturation gradients show a change of the CIELCh color 78, 17.314, 17.330 by changing the saturation by 10% instead.

 78, 17.314, 17.330

 78, 17.314, 17.330

 100, 17.314,
17.330

 68, 17.314, 17.330

 98, 17.314, 17.330

 58, 17.314, 17.330

 48, 17.314, 17.330

 38, 17.314, 17.330

 28, 17.314, 17.330

 18, 17.314, 17.330

 8, 17.314, 17.330

 0, 17.314, 17.330

 78, 17.314, 17.330

 78, 17.314, 17.330

72, 26.971, 18.515

84, 8.273, 16.377

67, 37.179, 20.014

90, 0.140, 200.012

61, 47.779, 21.944

97, 7.953, 195.186

57, 58.512, 24.426

98, 9.533, 198.873

53, 69.033, 27.560

50, 78.934, 31.323

48, 87.616, 35.359

47, 93.903, 38.586

47, 93.986, 38.621

Harmonies

Complementary

The Complementary color scheme is a pair of colors which are on the opposite of each other on the color wheel.



78, 17.314, 17.330



87, 15.358, 194.465

Rectangle

The Rectangle color scheme consists of four colors that form a rectangle on the color wheel.



78, 17.314, 17.330



78, 17.314, 67.330



78, 17.314, 197.330



78, 17.314, 247.330

Sweetspot

The Sweet Spot groups the original color and five complimentary colors.



78, 17.312, 17.337



96, 5.476, 16.032



79, 28.428, 324.114



51, 3.641, 16.094



0, 0.000, 0.000



53, 0.007, 296.813

Same Dimension

The Same Dimension uses a secret algorithm to generate beautiful new colors.



78, 17.312, 17.337



84, 23.393, 17.814



83, 14.360, 67.514



44, 4.730, 16.343



36, 77.216, 38.135



6, 25.439, 19.075

Inverse Universe

The Inverse Universe completely reimagines the original color for something new.



78, 17.312, 17.337



84, 23.393, 17.814



82, 13.401, 252.545



44, 4.730, 16.343



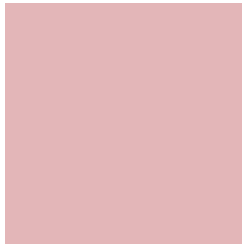
36, 77.216, 38.135



6, 25.439, 19.075

Previews

White Background



This preview shows how the CIELCh color 78, 17.314, 17.330 looks on a white background.

Color Contrast Check

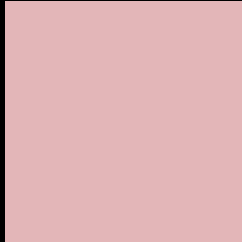
Large Text (above 18pt) WCAG AA × Fail

Any Text WCAG AA × Fail

Large Text (above 18pt) WCAG AAA × Fail

Any Text WCAG AAA × Fail

Black Background



This preview shows how the CIELCh color 78, 17.314, 17.330 looks on a black background.

Color Contrast Check

Large Text (above 18pt) WCAG AA ✓ Pass

Any Text WCAG AA ✓ Pass

Large Text (above 18pt) WCAG AAA ✓ Pass

Any Text WCAG AAA ✓ Pass

If you want to check with other color combinations, try the [Color Contrast Checker](#).

CIELCh 78, 17.314, 17.330

Background



This preview shows how black text looks on a background with the CIELCh color 78, 17.314, 17.330.

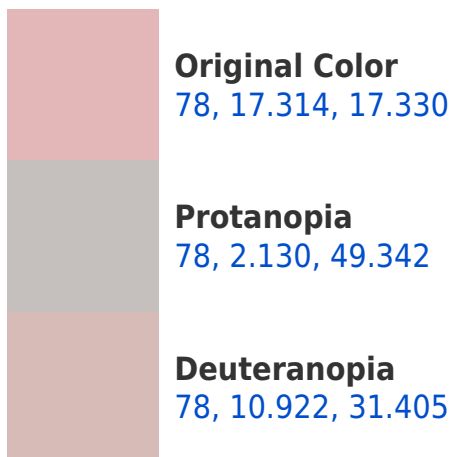



This preview shows how white text looks on a background with the CIELCh color 78, 17.314, 17.330.

Color Blindness Simulation

Color vision deficiency is a very complex topic, and I could not describe the different causes any better than Wikipedia does, so if you want to learn more, you should check out their [article about color blindness](#).

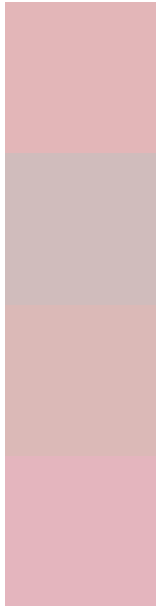
Dichromacy





Tritanopia
78, 19.520, 358.706

Trichromacy



Original Color
78, 17.314, 17.330

Protanomaly
78, 7.532, 19.943

Deuteranomaly
78, 13.082, 25.069

Tritanomaly
78, 18.450, 5.992

Monochromacy



Original Color
78, 17.314, 17.330

Achromatopsia
79, 0.010, 296.813

Achromatomaly
79, 6.002, 14.714

CSS Examples

Text

The CSS property to change the color of the text to CIELCh 78, 17.314, 17.330 is called "color". The color property can be set on classes, ids or directly on the HTML element.

This example shows how text in the color `rgb(227, 182, 184)` looks like.

```
.text, #text, p{  
    color:rgb(227, 182, 184)  
}
```

If you want to add a text shadow in that color use the text-shadow property, you can generate a text shadow directly with our [CSS Text Shadow Generator](#).

Here you see how black text with a 4 pixel rgb(227, 182, 184) colored shadow looks like.

```
.shadow{ text-shadow: 4px 4px 2px rgb(227, 182, 184) }
```

Border

The CSS property to change the border of an element to CIELCh 78, 17.314, 17.330 is called "border". The border property can be set on classes, ids or directly on the HTML element.

This example shows the color as border, it can be applied via the CSS property "border" or "border-color".

```
.border, #border, table{ border:4px solid rgb(227, 182, 184) }
```

If only the border color should be changed use the property `border-color`.

```
.border{ border-color:rgb(227, 182, 184) }
```

If you want to add a box shadow in that color use:

Here you see how a box with a 4 pixel `rgb(227, 182, 184)` colored shadow looks like.

```
.boxshadow{ -moz-box-shadow:4px 4px 4px 4px rgb(227, 182, 184); -webkit-box-shadow:4px 4px 4px 4px rgb(227, 182, 184); box-shadow:4px 4px 4px 4px rgb(227, 182, 184) }
```

Background

The CSS property to change the background color of an element to CIELCh 78, 17.314, 17.330 is called "background". The background property can be set on classes, ids or directly on the HTML element.

```
.background, #background, body{  
background: rgb(227, 182, 184) }
```

If only the background color should be changed can be used:

```
.background{ background-color: rgb(227,  
182, 184) }
```

This example shows the color as background, it is applied via the CSS property "background".

To optimize and compress your CSS code, you can use our [online CSS compressor and optimizer](#) based on csstidy. If you want to create a linear or radial gradient as background or border, check our [CSS Gradient Generator](#).

Hey! You found this booklet interesting? Support Converting Colors with the new Membership Option!

The pro membership hides all ads, plus gives you double the colors in the color bucket, and more awesome pro features!

[Learn more, Memberships starting at \\$2.50/m!](#)

**Follow me
on Twitter!**

@ConvertingColor