

Converting Colors

CIELCh(78, 17.891, 28.750)

Have a look what the booklet for
CIELCh(78, 17.891, 28.750) contains.

| | |
|--|----|
| CIELCh(78, 18.048, 27.561) | 3 |
| <i>Conversions</i> | 4 |
| <i>Details</i> | 6 |
| <i>Harmonies</i> | 11 |
| <i>Previews</i> | 20 |
| <i>Color Blindness Simulation</i> | 23 |
| <i>CSS Examples</i> | 26 |

Color

CIELCh(78, 18.048, 27.561)

Conversions

Conversions Part 1

| Format | Color |
|-------------|---------------------------|
| Hex | E4B6B2 |
| RGB | 228, 182, 178 |
| RGB Percent | 89%, 71%, 70% |
| CMY | 0.1056, 0.2860, 0.3017 |
| CMYK | 0.00, 0.20, 0.22, 0.11 |
| HSL | 5°, 48%, 80% |
| HSV | 5°, 22%, 89% |
| XYZ | 56.8078, 53.2120, 49.4364 |
| YIQ | 195.2980, 28.7000, 8.5080 |

Conversions

Conversions Part 2

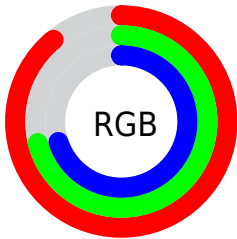
| Format | Color |
|-------------------------------------|-------------------------------|
| R _Y B | 228, 182, 178 |
| Decimal | 14988978 |
| CIE Lab | 78.00, 16.00, 8.35 |
| CIE LCh | 78, 18.048, 27.561 |
| Yxy | 53.2120, 0.3563, 0.3337 |
| Android (android.graphics.Color) | 4293179058 (0xFFE4B6B2) |
| YUV | 195.2980, -8.5279, 28.6797 |
| Hunter-Lab | 72.9466, 11.3520, 10.8813 |

Details

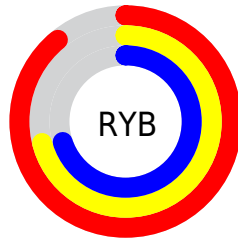
The CIELCh color **78, 18.048, 27.561** is a light color, and the websafe version is hex **FFCCCC**. A complement of this color would be **86, 15.523, 206.223**, and the grayscale version is **79, 0.010, 296.813**.

A 20% lighter version of the original color is **95, 6.452, 38.155**, and **58, 18.165, 28.340** is the 20% darker color. If you saturate the color by 10%, you get **73, 27.372, 28.325**, and if you desaturate by 10%, it is **84, 9.418, 27.004**.

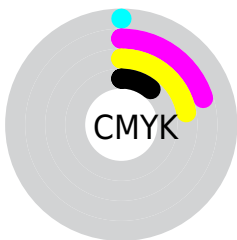
Distribution



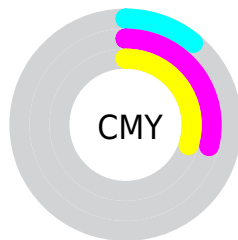
- Red (89%)
- Green (71%)
- Blue (70%)



- Red (89%)
- Yellow (71%)
- Blue (70%)



- Cyan (0%)
- Magenta (20%)
- Yellow (22%)
- Black (11%)



- Cyan (11%)
- Magenta (29%)
- Yellow (30%)


Brightness & Saturation Gradients

These gradients show how the CIELCh color 78, 18.048, 27.561 changes by changing the brightness by 10 percent. The first figure shows a shift by +10% for each color and the second figure -10%.

Similar to the brightness gradients but the following saturation gradients show a change of the CIELCh color 78, 18.048, 27.561 by changing the saturation by 10% instead.

 78, 18.048, 27.561

 78, 18.048, 27.561

 100, 18.048,
27.561

 68, 18.048, 27.561

 98, 18.048, 27.561

 58, 18.048, 27.561

 48, 18.048, 27.561

 38, 18.048, 27.561

 28, 18.048, 27.561

 18, 18.048, 27.561

 8, 18.048, 27.561

 0, 18.048, 27.561

 78, 18.048, 27.561

 78, 18.048, 27.561

73, 27.372, 28.325

84, 9.418, 27.004

67, 37.379, 29.353

89, 1.458, 26.276

62, 47.988, 30.729

95, 5.882, 206.549

58, 59.024, 32.521

98, 9.157, 198.899

54, 70.178, 34.746

51, 80.887, 37.254

49, 89.940, 39.488

48, 95.006, 40.722

Harmonies

Complementary

The Complementary color scheme is a pair of colors which are on the opposite of each other on the color wheel.



78, 18.048, 27.561



86, 15.523, 206.223

Rectangle

The Rectangle color scheme consists of four colors that form a rectangle on the color wheel.



78, 18.048, 27.561



78, 18.048, 77.561



78, 18.048, 207.561



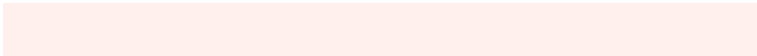
78, 18.048, 257.561

Sweetspot

The Sweet Spot groups the original color and five complimentary colors.



78, 18.046, 27.569



96, 5.932, 26.758



78, 30.617, 327.526



50, 3.864, 26.790



0, 0.000, 0.000



53, 0.007, 296.813

Same Dimension

The Same Dimension uses a secret algorithm to generate beautiful new colors.



78, 18.046, 27.569



84, 23.840, 27.861



84, 17.134, 79.428



45, 4.463, 26.881



38, 78.848, 40.908



7, 25.610, 25.975

Inverse Universe

The Inverse Universe completely reimagines the original color for something new.



86, 15.523, 206.223



94, 19.849, 206.179



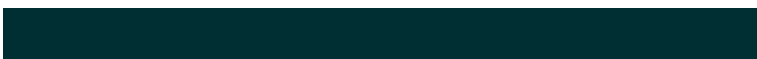
80, 16.544, 265.565



47, 4.197, 206.482



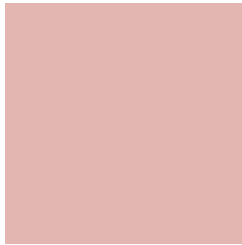
62, 34.745, 210.234



17, 14.762, 207.897

Previews

White Background



This preview shows how the CIELCh color 78, 18.048, 27.561 looks on a white background.

Color Contrast Check

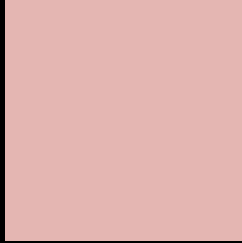
Large Text (above 18pt) WCAG AA × Fail

Any Text WCAG AA × Fail

Large Text (above 18pt) WCAG AAA × Fail

Any Text WCAG AAA × Fail

Black Background



This preview shows how the CIELCh color 78, 18.048, 27.561 looks on a black background.

Color Contrast Check

Large Text (above 18pt) WCAG AA ✓ Pass

Any Text WCAG AA ✓ Pass

Large Text (above 18pt) WCAG AAA ✓ Pass

Any Text WCAG AAA ✓ Pass

If you want to check with other color combinations, try the [Color Contrast Checker](#).

CIELCh 78, 18.048, 27.561

Background



This preview shows how black text looks on a background with the CIELCh color 78, 18.048, 27.561.

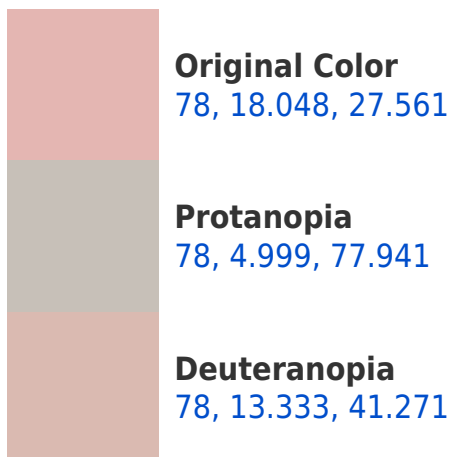


This preview shows how white text looks on a background with the CIELCh color 78, 18.048, 27.561.

Color Blindness Simulation

Color vision deficiency is a very complex topic, and I could not describe the different causes any better than Wikipedia does, so if you want to learn more, you should check out their [article about color blindness](#).

Dichromacy





Tritanopia
78, 20.230, 359.619

Trichromacy



Original Color
78, 18.048, 27.561

Protanomaly
78, 8.988, 40.767

Deuteranomaly
78, 15.036, 36.841

Tritanomaly
78, 18.658, 9.529

Monochromacy



Original Color
78, 18.048, 27.561

Achromatopsia
79, 0.010, 296.813

Achromatomaly
78, 6.404, 24.592

CSS Examples

Text

The CSS property to change the color of the text to CIELCh 78, 18.048, 27.561 is called "color". The color property can be set on classes, ids or directly on the HTML element.

This example shows how text in the color `rgb(228, 182, 178)` looks like.

```
.text, #text, p{  
    color:rgb(228, 182, 178)  
}
```

If you want to add a text shadow in that color use the text-shadow property, you can generate a text shadow directly with our [CSS Text Shadow Generator](#).

Here you see how black text with a 4 pixel rgb(228, 182, 178) colored shadow looks like.

```
.shadow{ text-shadow: 4px 4px 2px rgb(228, 182, 178) }
```

Border

The CSS property to change the border of an element to CIELCh 78, 18.048, 27.561 is called "border". The border property can be set on classes, ids or directly on the HTML element.

This example shows the color as border, it can be applied via the CSS property "border" or "border-color".

```
.border, #border, table{ border:4px solid rgb(228, 182, 178) }
```

If only the border color should be changed use the property `border-color`.

```
.border{ border-color:rgb(228, 182, 178) }
```

If you want to add a box shadow in that color use:

Here you see how a box with a 4 pixel `rgb(228, 182, 178)` colored shadow looks like.

```
.boxshadow{ -moz-box-shadow:4px 4px 4px 4px rgb(228, 182, 178); -webkit-box-shadow:4px 4px 4px 4px rgb(228, 182, 178); box-shadow:4px 4px 4px 4px rgb(228, 182, 178) }
```

Background

The CSS property to change the background color of an element to CIELCh 78, 18.048, 27.561 is called "background". The background property can be set on classes, ids or directly on the HTML element.

```
.background, #background, body{  
background: rgb(228, 182, 178) }
```

If only the background color should be changed can be used:

```
.background{ background-color: rgb(228,  
182, 178) }
```

This example shows the color as background, it is applied via the CSS property "background".

To optimize and compress your CSS code, you can use our [online CSS compressor and optimizer](#) based on csstidy. If you want to create a linear or radial gradient as background or border, check our [CSS Gradient Generator](#).

Hey! You found this booklet interesting? Support Converting Colors with the new Membership Option!

The pro membership hides all ads, plus gives you double the colors in the color bucket, and more awesome pro features!

[Learn more, Memberships starting at \\$2.50/m!](#)

**Follow me
on Twitter!**

@ConvertingColor