

Converting Colors

CIELCh(78, 18.560, 4.391)

Have a look what the booklet for
CIELCh(78, 18.560, 4.391) contains.

CIELCh(78, 18.560, 4.391)	3
<i>Conversions</i>	4
<i>Details</i>	6
<i>Harmonies</i>	11
<i>Previews</i>	20
<i>Color Blindness Simulation</i>	23
<i>CSS Examples</i>	26

Color

CIELCh(78, 18.560, 4.391)

Conversions

Conversions Part 1

Format	Color
Hex	E4B5BF
RGB	228, 181, 191
RGB Percent	89%, 71%, 75%
CMY	0.1065, 0.2907, 0.2516
CMYK	0.00, 0.21, 0.16, 0.11
HSL	347°, 46%, 80%
HSV	347°, 21%, 89%
XYZ	57.8277, 53.2120, 56.4281
YIQ	196.1930, 24.8020, 13.0740

Conversions

Conversions Part 2

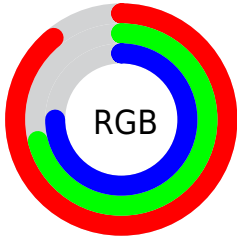
Format	Color
R_{YB}	228, 181, 191
Decimal	14988735
CIE _{Lab}	78.00, 18.51, 1.42
CIE _{LCh}	78, 18.560, 4.391
Yxy	53.2120, 0.3453, 0.3177
Android (android.graphics.Color)	4293178815 (0xFFE4B5BF)
YUV	196.1930, -2.5601, 27.8947
Hunter-Lab	72.9466, 13.8477, 5.1985

Details

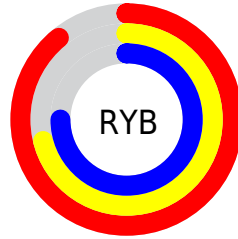
The CIELCh color **78, 18.560, 4.391** is a light color, and the websafe version is hex **FFCCCC**. A complement of this color would be **87, 17.121, 180.406**, and the grayscale version is **79, 0.010, 296.813**.

A 20% lighter version of the original color is **95, 8.208, 341.277**, and **58, 18.578, 3.889** is the 20% darker color. If you saturate the color by 10%, you get **72, 28.161, 5.750**, and if you desaturate by 10%, it is **84, 9.326, 3.242**.

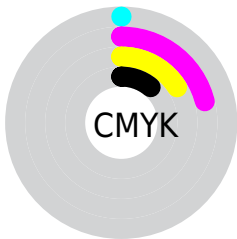
Distribution



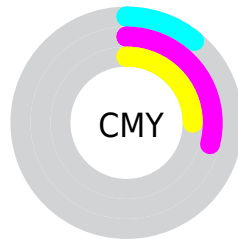
- Red (89%)
- Green (71%)
- Blue (75%)



- Red (89%)
- Yellow (71%)
- Blue (75%)



- Cyan (0%)
- Magenta (21%)
- Yellow (16%)
- Black (11%)



- Cyan (11%)
- Magenta (29%)
- Yellow (25%)

Brightness & Saturation Gradients

These gradients show how the CIELCh color 78, 18.560, 4.391 changes by changing the brightness by 10 percent. The first figure shows a shift by +10% for each color and the second figure -10%.

Similar to the brightness gradients but the following saturation gradients show a change of the CIELCh color 78, 18.560, 4.391 by changing the saturation by 10% instead.

 78, 18.560, 4.391  78, 18.560, 4.391

 100, 18.560, 4.391  68, 18.560, 4.391

 98, 18.560, 4.391  58, 18.560, 4.391

 48, 18.560, 4.391

 38, 18.560, 4.391

 28, 18.560, 4.391

 18, 18.560, 4.391

 8, 18.560, 4.391

 0, 18.560, 4.391

 78, 18.560, 4.391  78, 18.560, 4.391

72, 28.161, 5.750

84, 9.326, 3.242

67, 37.991, 7.393

90, 0.536, 1.303

62, 47.804, 9.431

96, 7.792, 181.587

57, 57.258, 11.999

98, 9.235, 198.894

53, 65.955, 15.256

51, 73.565, 19.342

49, 79.985, 24.274

48, 85.234, 29.297

Harmonies

Complementary

The Complementary color scheme is a pair of colors which are on the opposite of each other on the color wheel.



78, 18.560, 4.391



87, 17.121, 180.406

Rectangle

The Rectangle color scheme consists of four colors that form a rectangle on the color wheel.



78, 18.560, 4.391



78, 18.560, 54.391



78, 18.560, 184.391



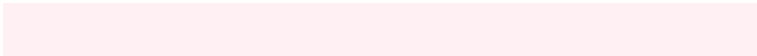
78, 18.560, 234.391

Sweetspot

The Sweet Spot groups the original color and five complimentary colors.



78, 18.558, 4.396



96, 5.704, 2.738



78, 28.368, 319.214



51, 3.790, 2.812



0, 0.000, 0.000



53, 0.007, 296.813

Same Dimension

The Same Dimension uses a secret algorithm to generate beautiful new colors.



78, 18.558, 4.396



83, 24.903, 4.980



81, 14.882, 48.337



45, 5.001, 3.115



37, 70.437, 28.332



7, 26.657, 12.863

Inverse Universe

The Inverse Universe completely reimagines the original color for something new.



78, 18.558, 4.396



83, 24.903, 4.980



84, 13.155, 231.176



45, 5.001, 3.115



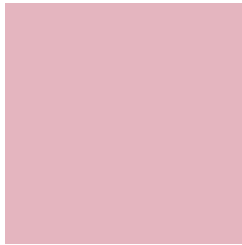
37, 70.437, 28.332



7, 26.657, 12.863

Previews

White Background



This preview shows how the CIELCh color 78, 18.560, 4.391 looks on a white background.

Color Contrast Check

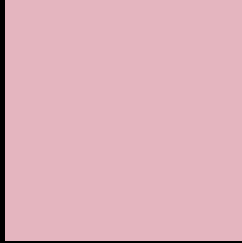
Large Text (above 18pt) WCAG AA × Fail

Any Text WCAG AA × Fail

Large Text (above 18pt) WCAG AAA × Fail

Any Text WCAG AAA × Fail

Black Background



This preview shows how the CIELCh color 78, 18.560, 4.391 looks on a black background.

Color Contrast Check

Large Text (above 18pt) WCAG AA ✓ Pass

Any Text WCAG AA ✓ Pass

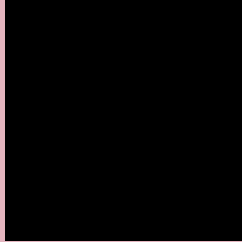
Large Text (above 18pt) WCAG AAA ✓ Pass

Any Text WCAG AAA ✓ Pass

If you want to check with other color combinations, try the [Color Contrast Checker](#).

CIELCh 78, 18.560, 4.391

Background



This preview shows how black text looks on a background with the CIELCh color 78, 18.560, 4.391.



This preview shows how white text looks on a background with the CIELCh color 78, 18.560, 4.391.

Color Blindness Simulation

Color vision deficiency is a very complex topic, and I could not describe the different causes any better than Wikipedia does, so if you want to learn more, you should check out their [article about color blindness](#).

Dichromacy



Original Color


78, 18.560, 4.391

Protanopia

78, 2.914, 312.536

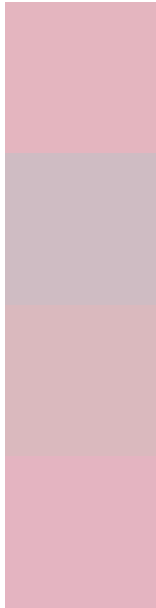
Deuteranopia

78, 9.922, 10.922



Tritanopia
78, 19.520, 358.706

Trichromacy



Original Color
78, 18.560, 4.391

Protanomaly
78, 8.006, 352.187

Deuteranomaly
78, 12.745, 8.408

Tritanomaly
78, 19.357, 0.188

Monochromacy



Original Color
78, 18.560, 4.391

Achromatopsia
79, 0.010, 296.813

Achromatomaly
79, 7.045, 2.311

CSS Examples

Text

The CSS property to change the color of the text to CIELCh 78, 18.560, 4.391 is called "color". The color property can be set on classes, ids or directly on the HTML element.

This example shows how text in the color `rgb(228, 181, 191)` looks like.

```
.text, #text, p{  
    color:rgb(228, 181, 191)  
}
```

If you want to add a text shadow in that color use the text-shadow property, you can generate a text shadow directly with our [CSS Text Shadow Generator](#).

Here you see how black text with a 4 pixel rgb(228, 181, 191) colored shadow looks like.

```
.shadow{ text-shadow: 4px 4px 2px rgb(228, 181, 191) }
```

Border

The CSS property to change the border of an element to CIELCh 78, 18.560, 4.391 is called "border". The border property can be set on classes, ids or directly on the HTML element.

This example shows the color as border, it can be applied via the CSS property "border" or "border-color".

```
.border, #border, table{ border:4px solid rgb(228, 181, 191) }
```

If only the border color should be changed use the property `border-color`.

```
.border{ border-color:rgb(228, 181, 191) }
```

If you want to add a box shadow in that color use:

Here you see how a box with a 4 pixel `rgb(228, 181, 191)` colored shadow looks like.

```
.boxshadow{ -moz-box-shadow:4px 4px 4px  
4px rgb(228, 181, 191); -webkit-box-  
shadow:4px 4px 4px 4px rgb(228, 181, 191);  
box-shadow:4px 4px 4px 4px rgb(228, 181,  
191) }
```

Background

The CSS property to change the background color of an element to CIELCh 78, 18.560, 4.391 is called "background". The background property can be set on classes, ids or directly on the HTML element.

```
.background, #background, body{  
background: rgb(228, 181, 191) }
```

If only the background color should be changed can be used:

```
.background{ background-color: rgb(228,  
181, 191) }
```

This example shows the color as background, it is applied via the CSS property "background".

To optimize and compress your CSS code, you can use our [online CSS compressor and optimizer](#) based on csstidy. If you want to create a linear or radial gradient as background or border, check our [CSS Gradient Generator](#).

Hey! You found this booklet interesting? Support Converting Colors with the new Membership Option!

The pro membership hides all ads, plus gives you double the colors in the color bucket, and more awesome pro features!

[Learn more, Memberships starting at \\$2.50/m!](#)

**Follow me
on Twitter!**

@ConvertingColor