

Converting Colors

CIELCh(78, 19.245, 78.168)

Have a look what the booklet for
CIELCh(78, 19.245, 78.168) contains.

CIELCh(78, 19.393, 77.606)	3
<i>Conversions</i>	4
<i>Details</i>	6
<i>Harmonies</i>	11
<i>Previews</i>	20
<i>Color Blindness Simulation</i>	23
<i>CSS Examples</i>	26

Color

CIELCh(78, 19.393, 77.606)

Conversions

Conversions Part 1

Format	Color
Hex	D6BD9E
RGB	214, 189, 158
RGB Percent	84%, 74%, 62%
CMY	0.1604, 0.2585, 0.3801
CMYK	0.00, 0.12, 0.26, 0.16
HSL	33°, 41%, 73%
HSV	33°, 26%, 84%
XYZ	52.1512, 53.2120, 39.9065
YIQ	192.9410, 24.8510, -4.3410

Conversions

Conversions Part 2

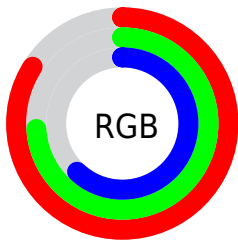
Format	Color
RYB	203, 214, 158
Decimal	14073246
CIELab	78.00, 4.16, 18.94
CIELCh	78, 19.393, 77.606
Yxy	53.2120, 0.3590, 0.3663
Android (android.graphics.Color)	4292263326 (0xFFD6BD9E)
YUV	192.9410, -17.2259, 18.4687
Hunter-Lab	72.9466, -0.0426, 18.6271

Details

The CIELCh color $78, 19.393, 77.606$ is a light color, and the websafe version is hex `CCCC99`. A complement of this color would be $74, 18.487, 265.039$, and the grayscale version is $78, 0.009, 296.813$.

A 20% lighter version of the original color is $97, 16.707, 96.041$, and $58, 19.291, 77.228$ is the 20% darker color. If you saturate the color by 10%, you get $75, 27.318, 76.278$, and if you desaturate by 10%, it is $81, 11.753, 78.916$.

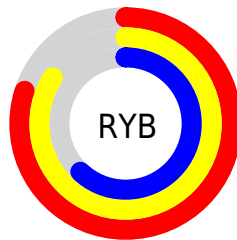
Distribution



Red (84%)

Green (74%)

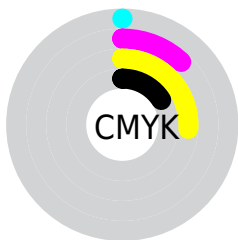
Blue (62%)



Red (80%)

Yellow (84%)

Blue (62%)

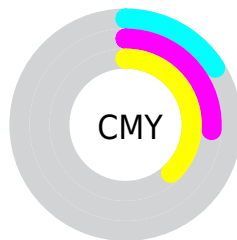


Cyan (0%)

Magenta (12%)

Yellow (26%)

Black (16%)



Cyan (16%)

Magenta (26%)

Yellow (38%)

Brightness & Saturation Gradients

These gradients show how the CIELCh color 78, 19.393, 77.606 changes by changing the brightness by 10 percent. The first figure shows a shift by +10% for each color and the second figure -10%.

Similar to the brightness gradients but the following saturation gradients show a change of the CIELCh color 78, 19.393, 77.606 by changing the saturation by 10% instead.

■ 78, 19.393, 77.606

■ 78, 19.393, 77.606

■ 100, 19.393,
77.606

■ 68, 19.393, 77.606

■ 98, 19.393, 77.606

■ 58, 19.393, 77.606

■ 48, 19.393, 77.606

■ 38, 19.393, 77.606

■ 28, 19.393, 77.606

■ 18, 19.393, 77.606

■ 8, 19.393, 77.606

■ 0, 19.393, 77.606

■ 78, 19.393, 77.606

■ 78, 19.393, 77.606

75, 27.318, 76.278

81, 11.753, 78.916

72, 35.500, 74.912

84, 4.393, 80.148

70, 43.859, 73.506

87, 2.703, 261.597

67, 52.207, 72.026

90, 9.557, 262.708

65, 60.162, 70.390

93, 11.911,
251.163

62, 67.033, 68.427

95, 11.575,
221.272

60, 71.865, 65.852

97, 13.703,
198.591

Harmonies

Complementary

The Complementary color scheme is a pair of colors which are on the opposite of each other on the color wheel.



78, 19.393, 77.606



74, 18.487, 265.039

Rectangle

The Rectangle color scheme consists of four colors that form a rectangle on the color wheel.



78, 19.393, 77.606



78, 19.393, 127.606



78, 19.393, 257.606



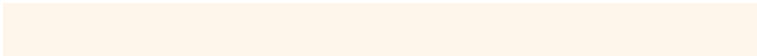
78, 19.393, 307.606

Sweetspot

The Sweet Spot groups the original color and five complimentary colors.



78, 19.394, 77.614



97, 6.601, 79.924



71, 25.120, 348.943



51, 4.705, 79.740



0, 0.000, 0.000



53, 0.007, 296.813

Same Dimension

The Same Dimension uses a secret algorithm to generate beautiful new colors.



78, 19.394, 77.614



90, 26.746, 76.930



84, 29.149, 109.819



44, 4.076, 79.762



48, 61.924, 65.414



10, 17.162, 65.696

Inverse Universe

The Inverse Universe completely reimagines the original color for something new.



74, 18.487, 265.039



84, 25.229, 266.054



67, 31.016, 294.983



43, 4.019, 262.304



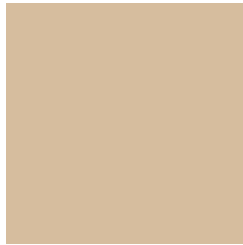
34, 59.063, 288.635



6, 18.529, 277.506

Previews

White Background



This preview shows how the CIELCh color 78, 19.393, 77.606 looks on a white background.

Color Contrast Check

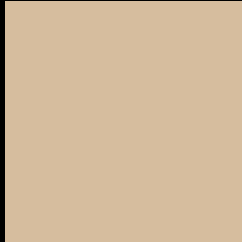
Large Text (above 18pt) WCAG AA × Fail

Any Text WCAG AA × Fail

Large Text (above 18pt) WCAG AAA × Fail

Any Text WCAG AAA × Fail

Black Background



This preview shows how the CIELCh color 78, 19.393, 77.606 looks on a black background.

Color Contrast Check

Large Text (above 18pt) WCAG AA ✓ Pass

Any Text WCAG AA ✓ Pass

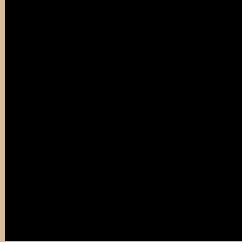
Large Text (above 18pt) WCAG AAA ✓ Pass

Any Text WCAG AAA ✓ Pass

If you want to check with other color combinations, try the [Color Contrast Checker](#).

CIELCh 78, 19.393, 77.606

Background



This preview shows how black text looks on a background with the CIELCh color 78, 19.393, 77.606.



This preview shows how white text looks on a background with the CIELCh color 78, 19.393, 77.606.

Color Blindness Simulation

Color vision deficiency is a very complex topic, and I could not describe the different causes any better than Wikipedia does, so if you want to learn more, you should check out their [article about color blindness](#).

Dichromacy



Original Color

78, 19.393, 77.606

Protanopia

78, 18.088, 94.638

Deuteranopia

78, 20.796, 61.689



Tritanopia
78, 15.021, 350.896

Trichromacy



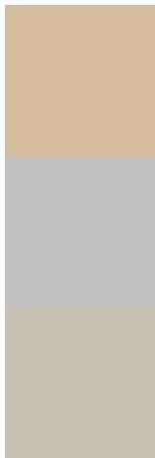
Original Color
78, 19.393, 77.606

Protanomaly
78, 18.699, 88.673

Deuteranomaly
78, 19.976, 65.815

Tritanomaly
78, 11.982, 27.940

Monochromacy



Original Color
78, 19.393, 77.606

Achromatopsia
78, 0.009, 296.813

Achromatomaly
78, 7.243, 81.379

CSS Examples

Text

The CSS property to change the color of the text to CIELCh 78, 19.393, 77.606 is called "color". The color property can be set on classes, ids or directly on the HTML element.

This example shows how text in the color `rgb(214, 189, 158)` looks like.

```
.text, #text, p{  
    color:rgb(214, 189, 158)  
}
```

If you want to add a text shadow in that color use the text-shadow property, you can generate a text shadow directly with our [CSS Text Shadow Generator](#).

Here you see how black text with a 4 pixel rgb(214, 189, 158) colored shadow looks like.

```
.shadow{ text-shadow: 4px 4px 2px rgb(214, 189, 158) }
```

Border

The CSS property to change the border of an element to CIELCh 78, 19.393, 77.606 is called "border". The border property can be set on classes, ids or directly on the HTML element.

This example shows the color as border, it can be applied via the CSS property "border" or "border-color".

```
.border, #border, table{ border:4px solid rgb(214, 189, 158) }
```

If only the border color should be changed use the property `border-color`.

```
.border{ border-color:rgb(214, 189, 158) }
```

If you want to add a box shadow in that color use:

Here you see how a box with a 4 pixel `rgb(214, 189, 158)` colored shadow looks like.

```
.boxshadow{ -moz-box-shadow:4px 4px 4px  
4px rgb(214, 189, 158); -webkit-box-  
shadow:4px 4px 4px 4px rgb(214, 189, 158);  
box-shadow:4px 4px 4px 4px rgb(214, 189,  
158) }
```

Background

The CSS property to change the background color of an element to CIELCh 78, 19.393, 77.606 is called "background". The background property can be set on classes, ids or directly on the HTML element.

```
.background, #background, body{  
background: rgb(214, 189, 158) }
```

If only the background color should be changed can be used:

```
.background{ background-color: rgb(214,  
189, 158) }
```

This example shows the color as background, it is applied via the CSS property "background".

To optimize and compress your CSS code, you can use our [online CSS compressor and optimizer](#) based on csstidy. If you want to create a linear or radial gradient as background or border, check our [CSS Gradient Generator](#).

Hey! You found this booklet interesting? Support Converting Colors with the new Membership Option!

The pro membership hides all ads, plus gives you double the colors in the color bucket, and more awesome pro features!

[Learn more, Memberships starting at \\$2.50/m!](#)

**Follow me
on Twitter!**

@ConvertingColor