

Converting Colors

CIELCh(78, 20.038, 52.835)

Have a look what the booklet for
CIELCh(78, 20.038, 52.835) contains.

CIELCh(78, 20.015, 52.408)	3
<i>Conversions</i>	4
<i>Details</i>	6
<i>Harmonies</i>	11
<i>Previews</i>	20
<i>Color Blindness Simulation</i>	23
<i>CSS Examples</i>	26

Color

CIELCh(78, 20.015, 52.408)

Conversions

Conversions Part 1

Format	Color
Hex	E2B8A4
RGB	226, 184, 164
RGB Percent	89%, 72%, 64%
CMY	0.1132, 0.2779, 0.3564
CMYK	0.00, 0.19, 0.27, 0.11
HSL	19°, 52%, 77%
HSV	19°, 27%, 89%
XYZ	55.2879, 53.2120, 42.5400
YIQ	194.2780, 31.4520, 2.6840

Conversions

Conversions Part 2

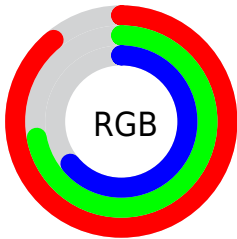
Format	Color
R _Y B	226, 194, 164
Decimal	14858404
CIE Lab	78.00, 12.21, 15.86
CIE LCh	78, 20.015, 52.408
Yxy	53.2120, 0.3660, 0.3523
Android (android.graphics.Color)	4293048484 (0xFFE2B8A4)
YUV	194.2780, -14.9271, 27.8202
Hunter-Lab	72.9466, 7.6329, 16.4866

Details

The CIELCh color **78, 20.015, 52.408** is a light color, and the websafe version is hex **FFCCCC**. A complement of this color would be **81, 17.122, 237.304**, and the grayscale version is **79, 0.010, 296.813**.

A 20% lighter version of the original color is **95, 12.071, 82.026**, and **58, 20.185, 52.599** is the 20% darker color. If you saturate the color by 10%, you get **74, 28.373, 51.848**, and if you desaturate by 10%, it is **82, 12.247, 53.055**.

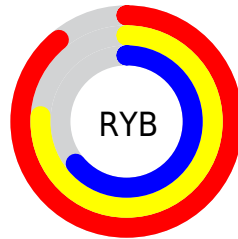
Distribution



Red (89%)

Green (72%)

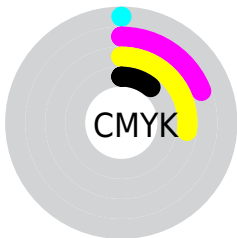
Blue (64%)



Red (89%)

Yellow (76%)

Blue (64%)

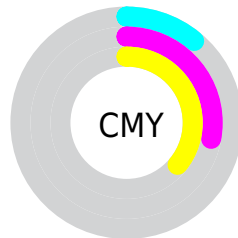


Cyan (0%)

Magenta (19%)

Yellow (27%)

Black (11%)



Cyan (11%)

Magenta (28%)

Yellow (36%)

Brightness & Saturation Gradients

These gradients show how the CIELCh color 78, 20.015, 52.408 changes by changing the brightness by 10 percent. The first figure shows a shift by +10% for each color and the second figure -10%.

Similar to the brightness gradients but the following saturation gradients show a change of the CIELCh color 78, 20.015, 52.408 by changing the saturation by 10% instead.

78, 20.015, 52.408

78, 20.015, 52.408

100, 20.015,
52.408

68, 20.015, 52.408

98, 20.015, 52.408

58, 20.015, 52.408

48, 20.015, 52.408

38, 20.015, 52.408

28, 20.015, 52.408

18, 20.015, 52.408

8, 20.015, 52.408

0, 20.015, 52.408

78, 20.015, 52.408

78, 20.015, 52.408

74, 28.373, 51.848

82, 12.247, 53.055

70, 37.342, 51.372

87, 5.028, 53.707

66, 46.892, 50.998

91, 1.694, 234.890

62, 56.894, 50.701

96, 7.973, 235.419

59, 67.010, 50.384

98, 9.798, 198.854

56, 76.478, 49.786

53, 83.955, 48.432

53, 85.704, 48.106

Harmonies

Complementary

The Complementary color scheme is a pair of colors which are on the opposite of each other on the color wheel.



78, 20.015, 52.408



81, 17.122, 237.304

Rectangle

The Rectangle color scheme consists of four colors that form a rectangle on the color wheel.



78, 20.015, 52.408



78, 20.015, 102.408



78, 20.015, 232.408



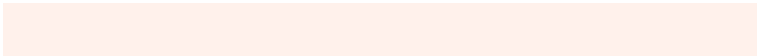
78, 20.015, 282.408

Sweetspot

The Sweet Spot groups the original color and five complimentary colors.



78, 20.014, 52.416



96, 5.989, 53.669



74, 31.994, 336.980



51, 4.280, 53.574



0, 0.000, 0.000



53, 0.007, 296.813

Same Dimension

The Same Dimension uses a secret algorithm to generate beautiful new colors.



78, 20.014, 52.416



84, 27.143, 52.076



86, 26.732, 98.227



45, 3.852, 53.583



41, 70.613, 48.686



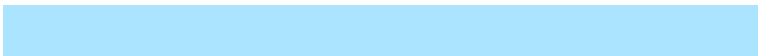
9, 20.724, 41.761

Inverse Universe

The Inverse Universe completely reimagines the original color for something new.



81, 17.122, 237.304



88, 22.351, 238.183



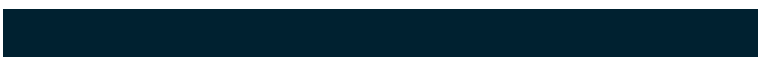
72, 27.690, 285.154



45, 3.671, 235.259



47, 38.417, 260.022



11, 14.563, 250.159

Previews

White Background



This preview shows how the CIELCh color 78, 20.015, 52.408 looks on a white background.

Color Contrast Check

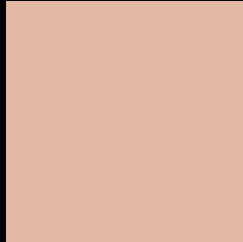
Large Text (above 18pt) WCAG AA × Fail

Any Text WCAG AA × Fail

Large Text (above 18pt) WCAG AAA × Fail

Any Text WCAG AAA × Fail

Black Background



This preview shows how the CIELCh color 78, 20.015, 52.408 looks on a black background.

Color Contrast Check

Large Text (above 18pt) WCAG AA ✓ Pass

Any Text WCAG AA ✓ Pass

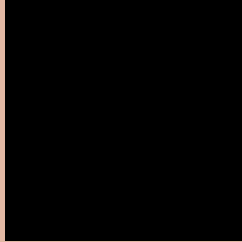
Large Text (above 18pt) WCAG AAA ✓ Pass

Any Text WCAG AAA ✓ Pass

If you want to check with other color combinations, try the [Color Contrast Checker](#).

CIELCh 78, 20.015, 52.408

Background



This preview shows how black text looks on a background with the CIELCh color 78, 20.015, 52.408.



This preview shows how white text looks on a background with the CIELCh color 78, 20.015, 52.408.

Color Blindness Simulation

Color vision deficiency is a very complex topic, and I could not describe the different causes any better than Wikipedia does, so if you want to learn more, you should check out their [article about color blindness](#).

Dichromacy



Original Color

78, 20.015, 52.408

Protanopia

78, 13.761, 94.197

Deuteranopia

78, 18.645, 58.907



Tritanopia
78, 19.874, 359.170

Trichromacy



Original Color
78, 20.015, 52.408

Protanomaly
78, 14.814, 75.201

Deuteranomaly
78, 19.297, 55.538

Tritanomaly
78, 17.723, 19.153

Monochromacy



Original Color
78, 20.015, 52.408

Achromatopsia
78, 0.009, 296.813

Achromatomaly
78, 7.123, 51.286

CSS Examples

Text

The CSS property to change the color of the text to CIELCh 78, 20.015, 52.408 is called "color". The color property can be set on classes, ids or directly on the HTML element.

This example shows how text in the color `rgb(226, 184, 164)` looks like.

```
.text, #text, p{  
    color:rgb(226, 184, 164)  
}
```

If you want to add a text shadow in that color use the text-shadow property, you can generate a text shadow directly with our [CSS Text Shadow Generator](#).

Here you see how black text with a 4 pixel rgb(226, 184, 164) colored shadow looks like.

```
.shadow{ text-shadow: 4px 4px 2px rgb(226, 184, 164) }
```

Border

The CSS property to change the border of an element to CIELCh 78, 20.015, 52.408 is called "border". The border property can be set on classes, ids or directly on the HTML element.

This example shows the color as border, it can be applied via the CSS property "border" or "border-color".

```
.border, #border, table{ border:4px solid rgb(226, 184, 164) }
```

If only the border color should be changed use the property `border-color`.

```
.border{ border-color:rgb(226, 184, 164) }
```

If you want to add a box shadow in that color use:

Here you see how a box with a 4 pixel `rgb(226, 184, 164)` colored shadow looks like.

```
.boxshadow{ -moz-box-shadow:4px 4px 4px  
4px rgb(226, 184, 164); -webkit-box-  
shadow:4px 4px 4px 4px rgb(226, 184, 164);  
box-shadow:4px 4px 4px 4px rgb(226, 184,  
164) }
```

Background

The CSS property to change the background color of an element to CIELCh 78, 20.015, 52.408 is called "background". The background property can be set on classes, ids or directly on the HTML element.

```
.background, #background, body{  
background: rgb(226, 184, 164) }
```

If only the background color should be changed can be used:

```
.background{ background-color: rgb(226,  
184, 164) }
```

This example shows the color as background, it is applied via the CSS property "background".

To optimize and compress your CSS code, you can use our [online CSS compressor and optimizer](#) based on csstidy. If you want to create a linear or radial gradient as background or border, check our [CSS Gradient Generator](#).

Hey! You found this booklet interesting? Support Converting Colors with the new Membership Option!

The pro membership hides all ads, plus gives you double the colors in the color bucket, and more awesome pro features!

[Learn more, Memberships starting at \\$2.50/m!](#)

**Follow me
on Twitter!**

@ConvertingColor