

Converting Colors

CIELCh(78, 20.489, 62.439)

Have a look what the booklet for
CIELCh(78, 20.489, 62.439) contains.

CIELCh(78, 20.464, 62.451)	3
<i>Conversions</i>	4
<i>Details</i>	6
<i>Harmonies</i>	11
<i>Previews</i>	20
<i>Color Blindness Simulation</i>	23
<i>CSS Examples</i>	26

Color

CIELCh(78, 20.464, 62.451)

Conversions

Conversions Part 1

Format	Color
Hex	DFBAA0
RGB	223, 186, 160
RGB Percent	87%, 73%, 63%
CMY	0.1264, 0.2714, 0.3734
CMYK	0.00, 0.17, 0.28, 0.13
HSL	25°, 49%, 75%
HSV	25°, 28%, 87%
XYZ	54.2042, 53.2120, 40.5771
YIQ	194.0990, 30.3980, -0.2420

Conversions

Conversions Part 2

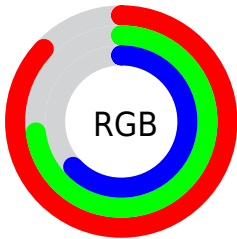
Format	Color
RYB	223, 204, 160
Decimal	14662304
CIELab	78.00, 9.46, 18.14
CIElCh	78, 20.464, 62.451
Yxy	53.2120, 0.3663, 0.3596
Android (android.graphics.Color)	4292852384 (0xFFDFBAA0)
YUV	194.0990, -16.8108, 25.3462
Hunter-Lab	72.9466, 4.9811, 18.0820

Details

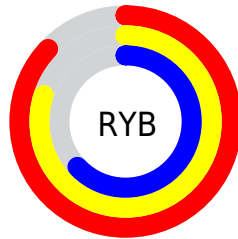
The CIELCh color **78, 20.464, 62.451** is a light color, and the websafe version is hex **FFCC99**. A complement of this color would be **78, 18.128, 249.395**, and the grayscale version is **78, 0.009, 296.813**.

A 20% lighter version of the original color is **96, 14.595, 89.788**, and **58, 20.674, 63.007** is the 20% darker color. If you saturate the color by 10%, you get **74, 28.593, 61.461**, and if you desaturate by 10%, it is **82, 12.818, 63.478**.

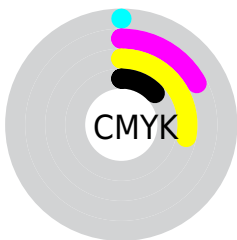
Distribution



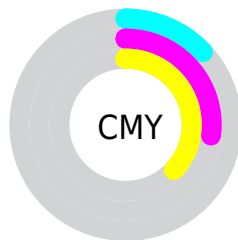
- Red (87%)
- Green (73%)
- Blue (63%)



- Red (87%)
- Yellow (80%)
- Blue (63%)



- Cyan (0%)
- Magenta (17%)
- Yellow (28%)
- Black (13%)



- Cyan (13%)
- Magenta (27%)
- Yellow (37%)


Brightness & Saturation Gradients

These gradients show how the CIELCh color 78, 20.464, 62.451 changes by changing the brightness by 10 percent. The first figure shows a shift by +10% for each color and the second figure -10%.

Similar to the brightness gradients but the following saturation gradients show a change of the CIELCh color 78, 20.464, 62.451 by changing the saturation by 10% instead.

 78, 20.464, 62.451

 78, 20.464, 62.451

 100, 20.464,
62.451

 68, 20.464, 62.451

 98, 20.464, 62.451

 58, 20.464, 62.451

 48, 20.464, 62.451

 38, 20.464, 62.451

 28, 20.464, 62.451

 18, 20.464, 62.451

 8, 20.464, 62.451

 0, 20.464, 62.451

 78, 20.464, 62.451

 78, 20.464, 62.451

74, 28.593, 61.461

82, 12.818, 63.478

71, 37.211, 60.495

86, 5.627, 64.481

67, 46.268, 59.556

89, 1.150, 246.029

64, 55.604, 58.603

93, 7.558, 246.729

61, 64.838, 57.525

97, 9.762, 210.397

58, 73.181, 56.065

98, 10.899,
198.779

56, 79.535, 53.870

55, 80.572, 53.513

Harmonies

Complementary

The Complementary color scheme is a pair of colors which are on the opposite of each other on the color wheel.



78, 20.464, 62.451



78, 18.128, 249.395

Rectangle

The Rectangle color scheme consists of four colors that form a rectangle on the color wheel.



78, 20.464, 62.451



78, 20.464, 112.451



78, 20.464, 242.451



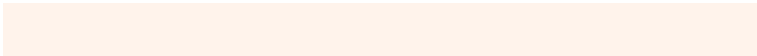
78, 20.464, 292.451

Sweetspot

The Sweet Spot groups the original color and five complimentary colors.



78, 20.464, 62.459



97, 6.069, 64.501



73, 30.812, 340.942



51, 4.333, 64.355



0, 0.000, 0.000



53, 0.007, 296.813

Same Dimension

The Same Dimension uses a secret algorithm to generate beautiful new colors.



78, 20.464, 62.459



86, 27.985, 61.858



86, 29.514, 102.795



45, 3.900, 64.368



44, 67.219, 54.140



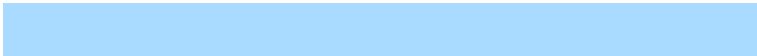
10, 19.915, 50.646

Inverse Universe

The Inverse Universe completely reimagines the original color for something new.



78, 18.128, 249.395



85, 24.071, 250.538



70, 31.122, 289.483



45, 3.764, 246.595



43, 45.642, 273.884



10, 16.442, 263.931

Previews

White Background



This preview shows how the CIELCh color 78, 20.464, 62.451 looks on a white background.

Color Contrast Check

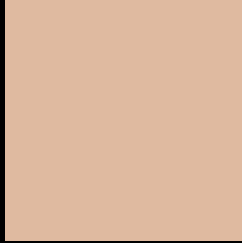
Large Text (above 18pt) WCAG AA × Fail

Any Text WCAG AA × Fail

Large Text (above 18pt) WCAG AAA × Fail

Any Text WCAG AAA × Fail

Black Background



This preview shows how the CIELCh color 78, 20.464, 62.451 looks on a black background.

Color Contrast Check

Large Text (above 18pt) WCAG AA ✓ Pass

Any Text WCAG AA ✓ Pass

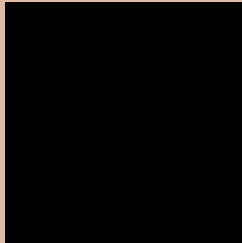
Large Text (above 18pt) WCAG AAA ✓ Pass

Any Text WCAG AAA ✓ Pass

If you want to check with other color combinations, try the [Color Contrast Checker](#).

CIELCh 78, 20.464, 62.451

Background



This preview shows how black text looks on a background with the CIELCh color 78, 20.464, 62.451.

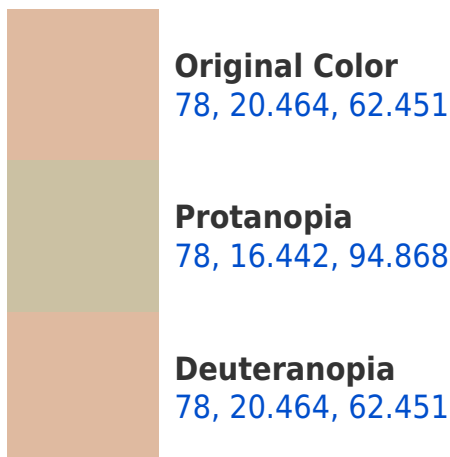


This preview shows how white text looks on a background with the CIELCh color 78, 20.464, 62.451.

Color Blindness Simulation

Color vision deficiency is a very complex topic, and I could not describe the different causes any better than Wikipedia does, so if you want to learn more, you should check out their [article about color blindness](#).

Dichromacy





Tritanopia
78, 18.798, 357.721

Trichromacy



Original Color
78, 20.464, 62.451

Protanomaly
78, 16.937, 80.907

Deuteranomaly
78, 20.464, 62.451

Tritanomaly
78, 16.201, 22.579

Monochromacy



Original Color
78, 20.464, 62.451

Achromatopsia
78, 0.009, 296.813

Achromatomaly
78, 6.874, 63.809

CSS Examples

Text

The CSS property to change the color of the text to CIELCh 78, 20.464, 62.451 is called "color". The color property can be set on classes, ids or directly on the HTML element.

This example shows how text in the color `rgb(223, 186, 160)` looks like.

```
.text, #text, p{  
    color:rgb(223, 186, 160)  
}
```

If you want to add a text shadow in that color use the text-shadow property, you can generate a text shadow directly with our [CSS Text Shadow Generator](#).

Here you see how black text with a 4 pixel rgb(223, 186, 160) colored shadow looks like.

```
.shadow{ text-shadow: 4px 4px 2px rgb(223, 186, 160) }
```

Border

The CSS property to change the border of an element to CIELCh 78, 20.464, 62.451 is called "border". The border property can be set on classes, ids or directly on the HTML element.

This example shows the color as border, it can be applied via the CSS property "border" or "border-color".

```
.border, #border, table{ border:4px solid rgb(223, 186, 160) }
```

If only the border color should be changed use the property `border-color`.

```
.border{ border-color:rgb(223, 186, 160) }
```

If you want to add a box shadow in that color use:

Here you see how a box with a 4 pixel `rgb(223, 186, 160)` colored shadow looks like.

```
.boxshadow{ -moz-box-shadow:4px 4px 4px 4px rgb(223, 186, 160); -webkit-box-shadow:4px 4px 4px 4px rgb(223, 186, 160); box-shadow:4px 4px 4px 4px rgb(223, 186, 160) }
```

Background

The CSS property to change the background color of an element to CIELCh 78, 20.464, 62.451 is called "background". The background property can be set on classes, ids or directly on the HTML element.

```
.background, #background, body{  
background: rgb(223, 186, 160) }
```

If only the background color should be changed can be used:

```
.background{ background-color: rgb(223,  
186, 160) }
```

This example shows the color as background, it is applied via the CSS property "background".

To optimize and compress your CSS code, you can use our [online CSS compressor and optimizer](#) based on csstidy. If you want to create a linear or radial gradient as background or border, check our [CSS Gradient Generator](#).

Hey! You found this booklet interesting? Support Converting Colors with the new Membership Option!

The pro membership hides all ads, plus gives you double the colors in the color bucket, and more awesome pro features!

[Learn more, Memberships starting at \\$2.50/m!](#)

**Follow me
on Twitter!**

@ConvertingColor