

Converting Colors

CIELCh(78, 21.913, 11.523)

Have a look what the booklet for
CIELCh(78, 21.913, 11.523) contains.

CIELCh(78, 21.777, 11.502)	3
<i>Conversions</i>	4
<i>Details</i>	6
<i>Harmonies</i>	11
<i>Previews</i>	20
<i>Color Blindness Simulation</i>	23
<i>CSS Examples</i>	26

Color

CIELCh(78, 21.777, 11.502)

Conversions

Conversions Part 1

Format	Color
Hex	EBB3BA
RGB	235, 179, 186
RGB Percent	92%, 70%, 73%
CMY	0.0800, 0.2995, 0.2721
CMYK	0.00, 0.24, 0.21, 0.08
HSL	353°, 58%, 81%
HSV	353°, 24%, 92%
XYZ	58.9960, 53.2120, 53.4054
YIQ	196.5420, 31.1290, 14.0490

Conversions

Conversions Part 2

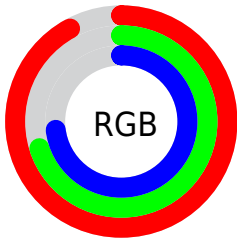
Format	Color
R _Y B	235, 179, 186
Decimal	15446970
CIE Lab	78.00, 21.34, 4.34
CIE LCh	78, 21.777, 11.502
Yxy	53.2120, 0.3562, 0.3213
Android (android.graphics.Color)	4293637050 (0xFFEBB3BA)
YUV	196.5420, -5.1972, 33.7277
Hunter-Lab	72.9466, 16.7065, 7.6554

Details

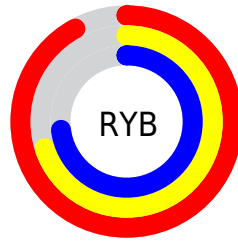
The CIELCh color **78, 21.777, 11.502** is a light color, and the websafe version is hex **FFCCCC**. A complement of this color would be **89, 19.286, 187.187**, and the grayscale version is **79, 0.010, 296.813**.

A 20% lighter version of the original color is **95, 8.001, 353.255**, and **58, 21.613, 11.412** is the 20% darker color. If you saturate the color by 10%, you get **72, 31.758, 12.919**, and if you desaturate by 10%, it is **84, 12.272, 10.347**.

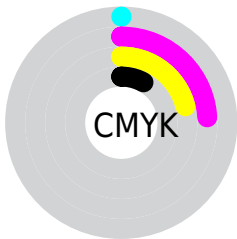
Distribution



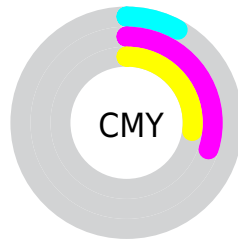
- Red (92%)
- Green (70%)
- Blue (73%)



- Red (92%)
- Yellow (70%)
- Blue (73%)



- Cyan (0%)
- Magenta (24%)
- Yellow (21%)
- Black (8%)



- Cyan (8%)
- Magenta (30%)
- Yellow (27%)


Brightness & Saturation Gradients

These gradients show how the CIELCh color 78, 21.777, 11.502 changes by changing the brightness by 10 percent. The first figure shows a shift by +10% for each color and the second figure -10%.

Similar to the brightness gradients but the following saturation gradients show a change of the CIELCh color 78, 21.777, 11.502 by changing the saturation by 10% instead.

 78, 21.777, 11.502

 78, 21.777, 11.502

 100, 21.777,
11.502

 68, 21.777, 11.502

 98, 21.777, 11.502

 58, 21.777, 11.502

 48, 21.777, 11.502

 38, 21.777, 11.502

 28, 21.777, 11.502

 18, 21.777, 11.502

 8, 21.777, 11.502

 0, 21.777, 11.502

 78, 21.777, 11.502

 78, 21.777, 11.502

72, 31.758, 12.919

84, 12.272, 10.347

67, 42.082, 14.681

90, 3.312, 9.275

62, 52.504, 16.914

97, 5.096, 188.782

57, 62.689, 19.757

99, 6.985, 199.058

54, 72.268, 23.335

51, 80.935, 27.665

50, 88.452, 32.470

49, 92.445, 35.228

Harmonies

Complementary

The Complementary color scheme is a pair of colors which are on the opposite of each other on the color wheel.



78, 21.777, 11.502



89, 19.286, 187.187

Rectangle

The Rectangle color scheme consists of four colors that form a rectangle on the color wheel.



78, 21.777, 11.502



78, 21.777, 61.502



78, 21.777, 191.502



78, 21.777, 241.502

Sweetspot

The Sweet Spot groups the original color and five complimentary colors.



78, 21.775, 11.507



95, 6.492, 9.637



79, 34.387, 321.886



50, 4.226, 9.700



0, 0.000, 0.000



53, 0.007, 296.813

Same Dimension

The Same Dimension uses a secret algorithm to generate beautiful new colors.



78, 21.775, 11.507



81, 28.743, 12.214



83, 17.662, 57.659



46, 4.962, 9.889



38, 75.443, 34.406



7, 28.079, 17.590

Inverse Universe

The Inverse Universe completely reimagines the original color for something new.



78, 21.775, 11.507



81, 28.743, 12.214



84, 15.688, 242.697



46, 4.962, 9.889



38, 75.443, 34.406



7, 28.079, 17.590

Previews

White Background



This preview shows how the CIELCh color 78, 21.777, 11.502 looks on a white background.

Color Contrast Check

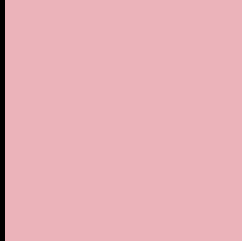
Large Text (above 18pt) WCAG AA × Fail

Any Text WCAG AA × Fail

Large Text (above 18pt) WCAG AAA × Fail

Any Text WCAG AAA × Fail

Black Background



This preview shows how the CIE LCh color 78, 21.777, 11.502 looks on a black background.

Color Contrast Check

Large Text (above 18pt) WCAG AA ✓ Pass

Any Text WCAG AA ✓ Pass

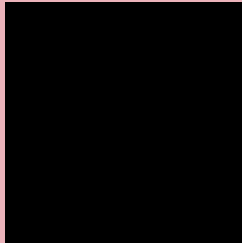
Large Text (above 18pt) WCAG AAA ✓ Pass

Any Text WCAG AAA ✓ Pass

If you want to check with other color combinations, try the [Color Contrast Checker](#).

CIELCh 78, 21.777, 11.502

Background



This preview shows how black text looks on a background with the CIELCh color 78, 21.777, 11.502.



This preview shows how white text looks on a background with the CIELCh color 78, 21.777, 11.502.

Color Blindness Simulation

Color vision deficiency is a very complex topic, and I could not describe the different causes any better than Wikipedia does, so if you want to learn more, you should check out their [article about color blindness](#).

Dichromacy



Original Color

78, 21.777, 11.502

Protanopia

78, 1.579, 359.395

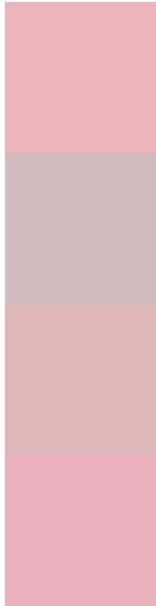
Deuteranopia

78, 10.808, 28.675



Tritanopia
78, 22.670, 3.722

Trichromacy



Original Color
78, 21.777, 11.502

Protanomaly
78, 8.792, 9.605

Deuteranomaly
78, 14.542, 18.489

Tritanomaly
78, 22.457, 6.348

Monochromacy



Original Color
78, 21.777, 11.502

Achromatopsia
79, 0.010, 296.813

Achromatomaly
79, 7.567, 11.873

CSS Examples

Text

The CSS property to change the color of the text to CIELCh 78, 21.777, 11.502 is called "color". The color property can be set on classes, ids or directly on the HTML element.

This example shows how text in the color `rgb(235, 179, 186)` looks like.

```
.text, #text, p{  
    color:rgb(235, 179, 186)  
}
```

If you want to add a text shadow in that color use the text-shadow property, you can generate a text shadow directly with our [CSS Text Shadow Generator](#).

Here you see how black text with a 4 pixel rgb(235, 179, 186) colored shadow looks like.

```
.shadow{ text-shadow: 4px 4px 2px rgb(235, 179, 186) }
```

Border

The CSS property to change the border of an element to CIELCh 78, 21.777, 11.502 is called "border". The border property can be set on classes, ids or directly on the HTML element.

This example shows the color as border, it can be applied via the CSS property "border" or "border-color".

```
.border, #border, table{ border:4px solid rgb(235, 179, 186) }
```

If only the border color should be changed use the property `border-color`.

```
.border{ border-color:rgb(235, 179, 186) }
```

If you want to add a box shadow in that color use:

Here you see how a box with a 4 pixel `rgb(235, 179, 186)` colored shadow looks like.

```
.boxshadow{ -moz-box-shadow:4px 4px 4px  
4px rgb(235, 179, 186); -webkit-box-  
shadow:4px 4px 4px 4px rgb(235, 179, 186);  
box-shadow:4px 4px 4px 4px rgb(235, 179,  
186) }
```

Background

The CSS property to change the background color of an element to CIELCh 78, 21.777, 11.502 is called "background". The background property can be set on classes, ids or directly on the HTML element.

```
.background, #background, body{  
background: rgb(235, 179, 186) }
```

If only the background color should be changed can be used:

```
.background{ background-color: rgb(235,  
179, 186) }
```

This example shows the color as background, it is applied via the CSS property "background".

To optimize and compress your CSS code, you can use our [online CSS compressor and optimizer](#) based on csstidy. If you want to create a linear or radial gradient as background or border, check our [CSS Gradient Generator](#).

Hey! You found this booklet interesting? Support Converting Colors with the new Membership Option!

The pro membership hides all ads, plus gives you double the colors in the color bucket, and more awesome pro features!

[Learn more, Memberships starting at \\$2.50/m!](#)

**Follow me
on Twitter!**

@ConvertingColor