

Converting Colors

CIELCh(78, 23.558, 1.383)

Have a look what the booklet for
CIELCh(78, 23.558, 1.383) contains.

CIELCh(78, 23.819, 0.673)	3
<i>Conversions</i>	4
<i>Details</i>	6
<i>Harmonies</i>	11
<i>Previews</i>	20
<i>Color Blindness Simulation</i>	23
<i>CSS Examples</i>	26

Color

CIELCh(78, 23.819, 0.673)

Conversions

Conversions Part 1

Format	Color
Hex	ECB1C1
RGB	236, 177, 193
RGB Percent	93%, 69%, 76%
CMY	0.0739, 0.3053, 0.2426
CMYK	0.00, 0.25, 0.18, 0.07
HSL	344°, 61%, 81%
HSV	344°, 25%, 93%
XYZ	60.0301, 53.2120, 57.6393
YIQ	196.4650, 30.0280, 17.4840

Conversions

Conversions Part 2

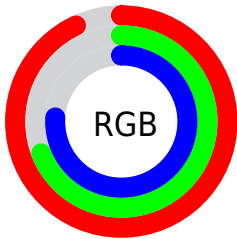
Format	Color
R_{YB}	236, 177, 193
Decimal	15512001
CIE _{Lab}	78.00, 23.82, 0.28
CIE _{LCh}	78, 23.819, 0.673
Yxy	53.2120, 0.3513, 0.3114
Android (android.graphics.Color)	4293702081 (0xFFECB1C1)
YUV	196.4650, -1.7082, 34.6722
Hunter-Lab	72.9466, 19.2370, 4.2141

Details

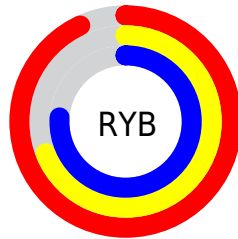
The CIELCh color **78, 23.819, 0.673** is a light color, and the websafe version is hex **FFCCCC**. A complement of this color would be **89, 21.949, 175.586**, and the grayscale version is **79, 0.010, 296.813**.

A 20% lighter version of the original color is **94, 11.350, 333.750**, and **58, 23.747, 359.975** is the 20% darker color. If you saturate the color by 10%, you get **72, 33.868, 2.121**, and if you desaturate by 10%, it is **84, 14.005, 359.453**.

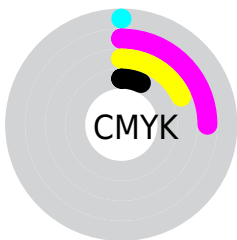
Distribution



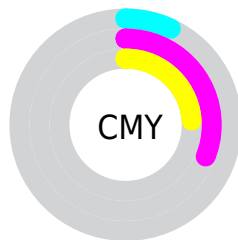
- Red (93%)
- Green (69%)
- Blue (76%)



- Red (93%)
- Yellow (69%)
- Blue (76%)



- Cyan (0%)
- Magenta (25%)
- Yellow (18%)
- Black (7%)



- Cyan (7%)
- Magenta (31%)
- Yellow (24%)

Brightness & Saturation Gradients

These gradients show how the CIELCh color 78, 23.819, 0.673 changes by changing the brightness by 10 percent. The first figure shows a shift by +10% for each color and the second figure -10%.

Similar to the brightness gradients but the following saturation gradients show a change of the CIELCh color 78, 23.819, 0.673 by changing the saturation by 10% instead.

 78, 23.819, 0.673

 78, 23.819, 0.673

 100, 23.819, 0.673

 68, 23.819, 0.673

 98, 23.819, 0.673

 58, 23.819, 0.673

 48, 23.819, 0.673

 38, 23.819, 0.673

 28, 23.819, 0.673

 18, 23.819, 0.673

 8, 23.819, 0.673

 0, 23.819, 0.673

 78, 23.819, 0.673

 78, 23.819, 0.673

72, 33.868, 2.121

84, 14.005,
359.453

67, 43.943, 3.873

90, 4.559, 358.338

62, 53.712, 6.044

97, 4.465, 177.684

58, 62.753, 8.781

99, 6.466, 199.098

54, 70.632, 12.255

52, 77.076, 16.614

50, 82.167, 21.870

50, 84.507, 24.649

Harmonies

Complementary

The Complementary color scheme is a pair of colors which are on the opposite of each other on the color wheel.



78, 23.819, 0.673



89, 21.949, 175.586

Rectangle

The Rectangle color scheme consists of four colors that form a rectangle on the color wheel.



78, 23.819, 0.673



78, 23.819, 50.673



78, 23.819, 180.673



78, 23.819, 230.673

Sweetspot

The Sweet Spot groups the original color and five complimentary colors.



78, 23.816, 0.677



95, 6.842, 358.573



78, 34.919, 317.332



50, 4.452, 358.640



0, 0.000, 0.000



53, 0.007, 296.813

Same Dimension

The Same Dimension uses a secret algorithm to generate beautiful new colors.



78, 23.816, 0.677



80, 30.696, 1.386



81, 19.430, 40.913



46, 5.218, 358.840



38, 68.779, 23.580



7, 27.811, 10.978

Inverse Universe

The Inverse Universe completely reimagines the original color for something new.



78, 23.816, 0.677



80, 30.696, 1.386



86, 16.432, 222.714



46, 5.218, 358.840



38, 68.779, 23.580



7, 27.811, 10.978

Previews

White Background



This preview shows how the CIELCh color 78, 23.819, 0.673 looks on a white background.

Color Contrast Check

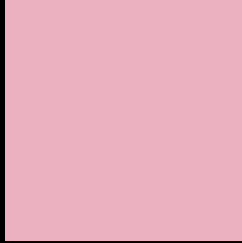
Large Text (above 18pt) WCAG AA × Fail

Any Text WCAG AA × Fail

Large Text (above 18pt) WCAG AAA × Fail

Any Text WCAG AAA × Fail

Black Background



This preview shows how the CIELCh color 78, 23.819, 0.673 looks on a black background.

Color Contrast Check

Large Text (above 18pt) WCAG AA ✓ Pass

Any Text WCAG AA ✓ Pass

Large Text (above 18pt) WCAG AAA ✓ Pass

Any Text WCAG AAA ✓ Pass

If you want to check with other color combinations, try the [Color Contrast Checker](#).

CIELCh 78, 23.819, 0.673

Background



This preview shows how black text looks on a background with the CIELCh color 78, 23.819, 0.673.

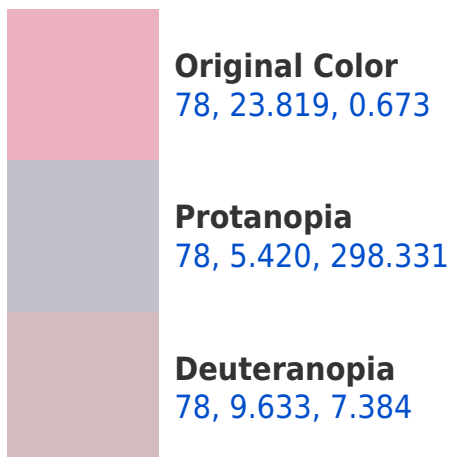



This preview shows how white text looks on a background with the CIELCh color 78, 23.819, 0.673.

Color Blindness Simulation

Color vision deficiency is a very complex topic, and I could not describe the different causes any better than Wikipedia does, so if you want to learn more, you should check out their [article about color blindness](#).

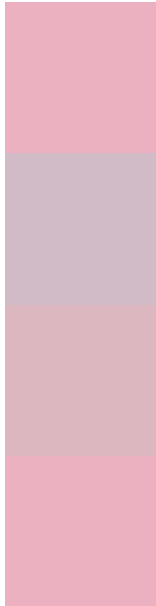
Dichromacy





Tritanopia
78, 23.549, 3.141

Trichromacy



Original Color
78, 23.819, 0.673

Protanomaly
78, 10.380, 342.087

Deuteranomaly
78, 15.094, 2.188

Tritanomaly
78, 23.678, 1.900

Monochromacy



Original Color
78, 23.819, 0.673

Achromatopsia
80, 0.010, 296.813

Achromatomaly
79, 8.453, 357.850

CSS Examples

Text

The CSS property to change the color of the text to CIELCh 78, 23.819, 0.673 is called "color". The color property can be set on classes, ids or directly on the HTML element.

This example shows how text in the color `rgb(236, 177, 193)` looks like.

```
.text, #text, p{  
    color:rgb(236, 177, 193)  
}
```

If you want to add a text shadow in that color use the text-shadow property, you can generate a text shadow directly with our [CSS Text Shadow Generator](#).

Here you see how black text with a 4 pixel rgb(236, 177, 193) colored shadow looks like.

```
.shadow{ text-shadow: 4px 4px 2px rgb(236, 177, 193) }
```

Border

The CSS property to change the border of an element to CIELCh 78, 23.819, 0.673 is called "border". The border property can be set on classes, ids or directly on the HTML element.

This example shows the color as border, it can be applied via the CSS property "border" or "border-color".

```
.border, #border, table{ border:4px solid rgb(236, 177, 193) }
```

If only the border color should be changed use the property `border-color`.

```
.border{ border-color:rgb(236, 177, 193) }
```

If you want to add a box shadow in that color use:

Here you see how a box with a 4 pixel `rgb(236, 177, 193)` colored shadow looks like.

```
.boxshadow{ -moz-box-shadow:4px 4px 4px  
4px rgb(236, 177, 193); -webkit-box-  
shadow:4px 4px 4px 4px rgb(236, 177, 193);  
box-shadow:4px 4px 4px 4px rgb(236, 177,  
193) }
```

Background

The CSS property to change the background color of an element to CIELCh 78, 23.819, 0.673 is called "background". The background property can be set on classes, ids or directly on the HTML element.

```
.background, #background, body{  
background: rgb(236, 177, 193) }
```

If only the background color should be changed can be used:

```
.background{ background-color: rgb(236,  
177, 193) }
```

This example shows the color as background, it is applied via the CSS property "background".

To optimize and compress your CSS code, you can use our [online CSS compressor and optimizer](#) based on csstidy. If you want to create a linear or radial gradient as background or border, check our [CSS Gradient Generator](#).

Hey! You found this booklet interesting? Support Converting Colors with the new Membership Option!

The pro membership hides all ads, plus gives you double the colors in the color bucket, and more awesome pro features!

[Learn more, Memberships starting at \\$2.50/m!](#)

**Follow me
on Twitter!**

@ConvertingColor