

Converting Colors

CIELCh(78, 27.829, 70.351)

Have a look what the booklet for
CIELCh(78, 27.829, 70.351) contains.

CIELCh(78, 27.737, 69.641)	3
<i>Conversions</i>	4
<i>Details</i>	6
<i>Harmonies</i>	11
<i>Previews</i>	20
<i>Color Blindness Simulation</i>	23
<i>CSS Examples</i>	26

Color

CIELCh(78, 27.737, 69.641)

Conversions

Conversions Part 1

Format	Color
Hex	E3B991
RGB	227, 185, 145
RGB Percent	89%, 73%, 57%
CMY	0.1089, 0.2736, 0.4305
CMYK	0.00, 0.18, 0.36, 0.11
HSL	29°, 60%, 73%
HSV	29°, 36%, 89%
XYZ	54.2768, 53.2120, 34.2852
YIQ	192.9980, 37.8720, -3.5360

Conversions

Conversions Part 2

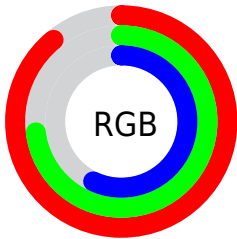
Format	Color
R _Y B	227, 223, 145
Decimal	14924177
CIE Lab	78.00, 9.65, 26.00
CIE LCh	78, 27.737, 69.641
Yxy	53.2120, 0.3828, 0.3753
Android (android.graphics.Color)	4293114257 (0xFFE3B991)
YUV	192.9980, -23.6630, 29.8198
Hunter-Lab	72.9466, 5.1587, 23.1961

Details

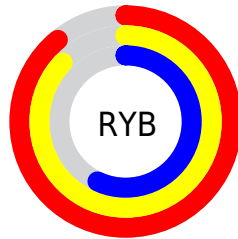
The CIELCh color **78, 27.737, 69.641** is a light color, and the websafe version is hex **FFCC99**. A complement of this color would be **74, 24.838, 260.079**, and the grayscale version is **78, 0.009, 296.813**.

A 20% lighter version of the original color is **95, 22.082, 94.554**, and **58, 27.762, 69.917** is the 20% darker color. If you saturate the color by 10%, you get **75, 36.299, 68.404**, and if you desaturate by 10%, it is **81, 19.557, 70.883**.

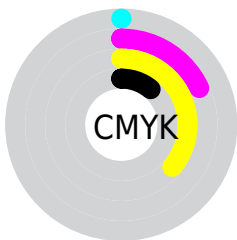
Distribution



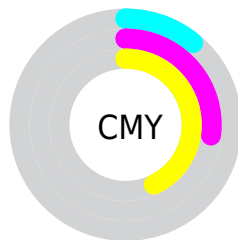
- Red (89%)
- Green (73%)
- Blue (57%)



- Red (89%)
- Yellow (87%)
- Blue (57%)



- Cyan (0%)
- Magenta (18%)
- Yellow (36%)
- Black (11%)



- Cyan (11%)
- Magenta (27%)
- Yellow (43%)


Brightness & Saturation Gradients

These gradients show how the CIELCh color 78, 27.737, 69.641 changes by changing the brightness by 10 percent. The first figure shows a shift by +10% for each color and the second figure -10%.

Similar to the brightness gradients but the following saturation gradients show a change of the CIELCh color 78, 27.737, 69.641 by changing the saturation by 10% instead.

 78, 27.737, 69.641

 78, 27.737, 69.641

 100, 27.737,
69.641

 68, 27.737, 69.641

 98, 27.737, 69.641

 58, 27.737, 69.641

 48, 27.737, 69.641

 38, 27.737, 69.641

 28, 27.737, 69.641

 18, 27.737, 69.641

 8, 27.737, 69.641

 0, 27.737, 69.641

 78, 27.737, 69.641

 78, 27.737, 69.641

75, 36.299, 68.404

81, 19.557, 70.883

72, 45.184, 67.145

85, 11.767, 72.103

69, 54.228, 65.836

88, 4.346, 73.263

66, 63.064, 64.384

92, 2.734, 254.707

63, 70.972, 62.591

95, 8.007, 247.302

61, 76.850, 60.105

98, 9.435, 198.880

60, 78.768, 59.053

Harmonies

Complementary

The Complementary color scheme is a pair of colors which are on the opposite of each other on the color wheel.



78, 27.737, 69.641



74, 24.838, 260.079

Rectangle

The Rectangle color scheme consists of four colors that form a rectangle on the color wheel.



78, 27.737, 69.641



78, 27.737, 119.641



78, 27.737, 249.641



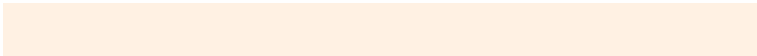
78, 27.737, 299.641

Sweetspot

The Sweet Spot groups the original color and five complimentary colors.



78, 27.737, 69.647



96, 8.721, 72.702



70, 37.928, 346.206



51, 5.880, 72.541



0, 0.000, 0.000



53, 0.007, 296.813

Same Dimension

The Same Dimension uses a secret algorithm to generate beautiful new colors.



78, 27.737, 69.647



84, 36.928, 68.755



88, 41.218, 105.962



46, 4.118, 72.889



47, 65.525, 59.703



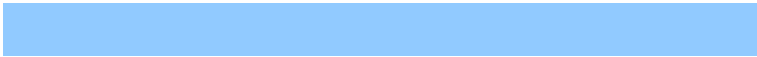
12, 20.925, 59.276

Inverse Universe

The Inverse Universe completely reimagines the original color for something new.



74, 24.838, 260.079



79, 32.264, 261.789



64, 45.038, 294.272



46, 4.020, 255.373



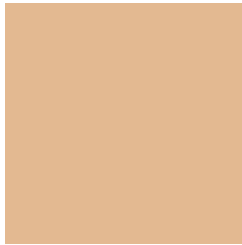
39, 53.794, 282.724



9, 19.371, 273.927

Previews

White Background



This preview shows how the CIELCh color 78, 27.737, 69.641 looks on a white background.

Color Contrast Check

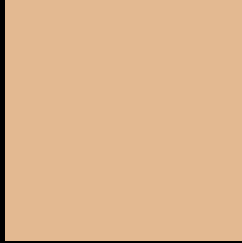
Large Text (above 18pt) WCAG AA × Fail

Any Text WCAG AA × Fail

Large Text (above 18pt) WCAG AAA × Fail

Any Text WCAG AAA × Fail

Black Background



This preview shows how the CIELCh color 78, 27.737, 69.641 looks on a black background.

Color Contrast Check

Large Text (above 18pt) WCAG AA ✓ Pass

Any Text WCAG AA ✓ Pass

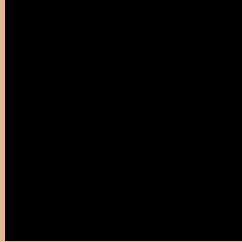
Large Text (above 18pt) WCAG AAA ✓ Pass

Any Text WCAG AAA ✓ Pass

If you want to check with other color combinations, try the [Color Contrast Checker](#).

CIELCh 78, 27.737, 69.641

Background



This preview shows how black text looks on a background with the CIELCh color 78, 27.737, 69.641.



This preview shows how white text looks on a background with the CIELCh color 78, 27.737, 69.641.

Color Blindness Simulation

Color vision deficiency is a very complex topic, and I could not describe the different causes any better than Wikipedia does, so if you want to learn more, you should check out their [article about color blindness](#).

Dichromacy





Tritanopia
78, 21.324, 0.897

Trichromacy



Original Color
78, 27.737, 69.641

Protanomaly
78, 24.466, 84.603

Deuteranomaly
78, 27.737, 69.641

Tritanomaly
78, 19.376, 28.772

Monochromacy



Original Color
78, 27.737, 69.641

Achromatopsia
78, 0.009, 296.813

Achromatomaly
78, 9.437, 71.797

CSS Examples

Text

The CSS property to change the color of the text to CIELCh 78, 27.737, 69.641 is called "color". The color property can be set on classes, ids or directly on the HTML element.

This example shows how text in the color `rgb(227, 185, 145)` looks like.

```
.text, #text, p{  
    color:rgb(227, 185, 145)  
}
```

If you want to add a text shadow in that color use the text-shadow property, you can generate a text shadow directly with our [CSS Text Shadow Generator](#).

Here you see how black text with a 4 pixel rgb(227, 185, 145) colored shadow looks like.

```
.shadow{ text-shadow: 4px 4px 2px rgb(227, 185, 145) }
```

Border

The CSS property to change the border of an element to CIELCh 78, 27.737, 69.641 is called "border". The border property can be set on classes, ids or directly on the HTML element.

This example shows the color as border, it can be applied via the CSS property "border" or "border-color".

```
.border, #border, table{ border:4px solid rgb(227, 185, 145) }
```

If only the border color should be changed use the property `border-color`.

```
.border{ border-color:rgb(227, 185, 145) }
```

If you want to add a box shadow in that color use:

Here you see how a box with a 4 pixel `rgb(227, 185, 145)` colored shadow looks like.

```
.boxshadow{ -moz-box-shadow:4px 4px 4px  
4px rgb(227, 185, 145); -webkit-box-  
shadow:4px 4px 4px 4px rgb(227, 185, 145);  
box-shadow:4px 4px 4px 4px rgb(227, 185,  
145) }
```

Background

The CSS property to change the background color of an element to CIELCh 78, 27.737, 69.641 is called "background". The background property can be set on classes, ids or directly on the HTML element.

```
.background, #background, body{  
background: rgb(227, 185, 145) }
```

If only the background color should be changed can be used:

```
.background{ background-color: rgb(227,  
185, 145) }
```

This example shows the color as background, it is applied via the CSS property "background".

To optimize and compress your CSS code, you can use our [online CSS compressor and optimizer](#) based on csstidy. If you want to create a linear or radial gradient as background or border, check our [CSS Gradient Generator](#).

Hey! You found this booklet interesting? Support Converting Colors with the new Membership Option!

The pro membership hides all ads, plus gives you double the colors in the color bucket, and more awesome pro features!

[Learn more, Memberships starting at \\$2.50/m!](#)

**Follow me
on Twitter!**

@ConvertingColor