

# Converting Colors

CIELCh(78, 28.607, 7.905)

Have a look what the booklet for  
CIELCh(78, 28.607, 7.905) contains.

<b>CIELCh(78, 28.865, 7.203)</b> .....	3
<i><b>Conversions</b></i> .....	4
<i><b>Details</b></i> .....	6
<i><b>Harmonies</b></i> .....	11
<i><b>Previews</b></i> .....	20
<i><b>Color Blindness Simulation</b></i> .....	23
<i><b>CSS Examples</b></i> .....	26

# Color

**CIELCh(78, 28.865, 7.203)**

# Conversions

## Conversions Part 1

Format	Color
Hex	F6ADBB
RGB	246, 173, 187
RGB Percent	96%, 68%, 73%
CMY	0.0343, 0.3206, 0.2658
CMYK	0.00, 0.30, 0.24, 0.03
HSL	348°, 81%, 82%
HSV	348°, 30%, 97%
XYZ	62.0763, 53.2120, 54.1433
YIQ	196.4230, 39.0140, 19.8300

# Conversions

## Conversions Part 2

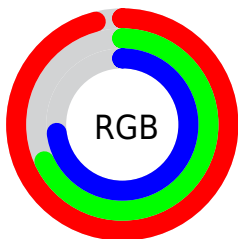
Format	Color
R <sub>Y</sub> B	246, 173, 187
Decimal	16166331
CIE Lab	78.00, 28.64, 3.62
CIE LCh	78, 28.865, 7.203
Yxy	53.2120, 0.3664, 0.3141
Android (android.graphics.Color)	4294356411 (0xFFF6ADBB)
YUV	196.4230, -4.6455, 43.4790
Hunter-Lab	72.9466, 24.2441, 7.0556

# Details

The CIELCh color **78, 28.865, 7.203** is a light color, and the websafe version is hex **FFCCCC**. A complement of this color would be **92, 25.402, 181.137**, and the grayscale version is **79, 0.010, 296.813**.

A 20% lighter version of the original color is **93, 11.757, 342.428**, and **58, 28.684, 7.060** is the 20% darker color. If you saturate the color by 10%, you get **72, 39.342, 8.835**, and if you desaturate by 10%, it is **84, 18.680, 5.869**.

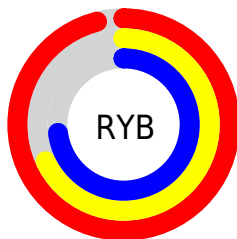
# Distribution



Red (96%)

Green (68%)

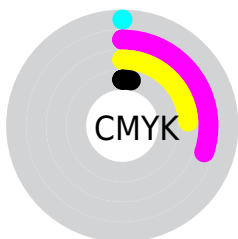
Blue (73%)



Red (96%)

Yellow (68%)

Blue (73%)

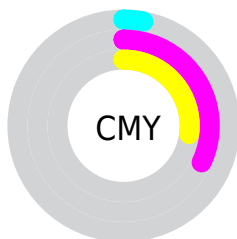


Cyan (0%)

Magenta (30%)

Yellow (24%)

Black (3%)



Cyan (3%)

Magenta (32%)

Yellow (27%)


# Brightness & Saturation Gradients

These gradients show how the CIELCh color 78, 28.865, 7.203 changes by changing the brightness by 10 percent. The first figure shows a shift by +10% for each color and the second figure -10%.

Similar to the brightness gradients but the following saturation gradients show a change of the CIELCh color 78, 28.865, 7.203 by changing the saturation by 10% instead.



 78, 28.865, 7.203       78, 28.865, 7.203

 100, 28.865, 7.203       68, 28.865, 7.203

 98, 28.865, 7.203       58, 28.865, 7.203

 48, 28.865, 7.203

 38, 28.865, 7.203

 28, 28.865, 7.203

 18, 28.865, 7.203

 8, 28.865, 7.203

 0, 28.865, 7.203

 78, 28.865, 7.203       78, 28.865, 7.203

72, 39.342, 8.835

84, 18.680, 5.869

67, 49.879, 10.862

91, 8.935, 4.729

62, 60.123, 13.421

97, 0.311, 185.787

58, 69.661, 16.672

99, 3.028, 199.432

55, 78.133, 20.745

53, 85.398, 25.639

52, 91.661, 30.941

52, 91.879, 31.114

# Harmonies

# Complementary

The Complementary color scheme is a pair of colors which are on the opposite of each other on the color wheel.



78, 28.865, 7.203



92, 25.402, 181.137

# Rectangle

The Rectangle color scheme consists of four colors that form a rectangle on the color wheel.



78, 28.865, 7.203



78, 28.865, 57.203



78, 28.865, 187.203



78, 28.865, 237.203

# Sweetspot

The Sweet Spot groups the original color and five complimentary colors.



78, 28.862, 7.207



94, 8.558, 4.661



78, 43.782, 320.134



49, 5.970, 4.819



0, 0.000, 0.000



53, 0.007, 296.813



# Same Dimension

The Same Dimension uses a secret algorithm to generate beautiful new colors.



78, 28.862, 7.207



77, 36.519, 8.212



83, 23.517, 49.777



48, 5.235, 4.711



39, 73.782, 30.102



9, 30.031, 17.102





# Inverse Universe

The Inverse Universe completely reimagines the original color for something new.



78, 28.862, 7.207



77, 36.519, 8.212



87, 19.636, 234.523



48, 5.235, 4.711



39, 73.782, 30.102



9, 30.031, 17.102



# Previews

## White Background



This preview shows how the CIELCh color 78, 28.865, 7.203 looks on a white background.

## Color Contrast Check

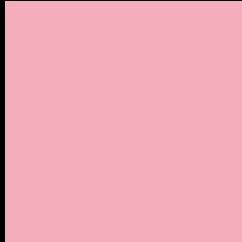
Large Text (above 18pt) WCAG AA × Fail

Any Text WCAG AA × Fail

Large Text (above 18pt) WCAG AAA × Fail

Any Text WCAG AAA × Fail

# Black Background



This preview shows how the CIELCh color 78, 28.865, 7.203 looks on a black background.

## Color Contrast Check

Large Text (above 18pt) WCAG AA ✓ Pass

Any Text WCAG AA ✓ Pass

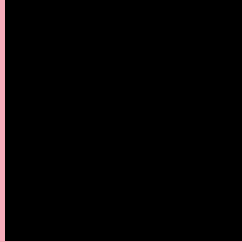
Large Text (above 18pt) WCAG AAA ✓ Pass

Any Text WCAG AAA ✓ Pass

If you want to check with other color combinations, try the [Color Contrast Checker](#).

# CIELCh 78, 28.865, 7.203

## Background



This preview shows how black text looks on a background with the CIELCh color 78, 28.865, 7.203.



This preview shows how white text looks on a background with the CIELCh color 78, 28.865, 7.203.

# Color Blindness Simulation

Color vision deficiency is a very complex topic, and I could not describe the different causes any better than Wikipedia does, so if you want to learn more, you should check out their [article about color blindness](#).

## Dichromacy



### Original Color

78, 28.865, 7.203

### Protanopia

78, 3.415, 309.165

### Deuteranopia

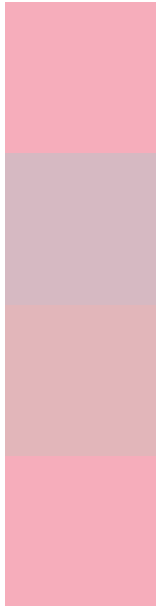
78, 10.719, 25.892



**Tritanopia**  
78, 28.865, 7.203



# Trichromacy



**Original Color**  
78, 28.865, 7.203

**Protanomaly**  
78, 11.867, 356.528

**Deuteranomaly**  
78, 16.948, 13.634

**Tritanomaly**  
78, 28.865, 7.203

# Monochromacy



**Original Color**  
78, 28.865, 7.203

**Achromatopsia**  
80, 0.010, 296.813

**Achromatomaly**  
79, 10.474, 5.531

# CSS Examples

## Text

The CSS property to change the color of the text to CIELCh 78, 28.865, 7.203 is called "color". The color property can be set on classes, ids or directly on the HTML element.

This example shows how text in the color `rgb(246, 173, 187)` looks like.

```
.text, #text, p{  
    color:rgb(246, 173, 187)  
}
```

If you want to add a text shadow in that color use the text-shadow property, you can generate a text shadow directly with our [CSS Text Shadow Generator](#).

Here you see how black text with a 4 pixel rgb(246, 173, 187) colored shadow looks like.

```
.shadow{ text-shadow: 4px 4px 2px rgb(246, 173, 187) }
```

## Border

The CSS property to change the border of an element to CIELCh 78, 28.865, 7.203 is called "border". The border property can be set on classes, ids or directly on the HTML element.

This example shows the color as border, it can be applied via the CSS property "border" or "border-color".

```
.border, #border, table{ border:4px solid rgb(246, 173, 187) }
```

If only the border color should be changed use the property `border-color`.

```
.border{ border-color:rgb(246, 173, 187) }
```

If you want to add a box shadow in that color use:

Here you see how a box with a 4 pixel `rgb(246, 173, 187)` colored shadow looks like.

```
.boxshadow{ -moz-box-shadow:4px 4px 4px  
4px rgb(246, 173, 187); -webkit-box-  
shadow:4px 4px 4px 4px rgb(246, 173, 187);  
box-shadow:4px 4px 4px 4px rgb(246, 173,  
187) }
```

# Background

The CSS property to change the background color of an element to CIELCh 78, 28.865, 7.203 is called "background". The background property can be set on classes, ids or directly on the HTML element.

```
.background, #background, body{  
background: rgb(246, 173, 187) }
```

If only the background color should be changed can be used:

```
.background{ background-color: rgb(246,  
173, 187) }
```

This example shows the color as background, it is applied via the CSS property "background".

To optimize and compress your CSS code, you can use our [online CSS compressor and optimizer](#) based on csstidy. If you want to create a linear or radial gradient as background or border, check our [CSS Gradient Generator](#).

Hey! You found this booklet interesting? Support Converting Colors with the new Membership Option!

The pro membership hides all ads, plus gives you double the colors in the color bucket, and more awesome pro features!

**[Learn more, Memberships starting at \\$2.50/m!](#)**

**Follow me  
on Twitter!**

@ConvertingColor