

Converting Colors

CIELCh(78, 29.062, 0.935)

Have a look what the booklet for
CIELCh(78, 29.062, 0.935) contains.

CIELCh(78, 29.145, 0.809)	3
<i>Conversions</i>	4
<i>Details</i>	6
<i>Harmonies</i>	11
<i>Previews</i>	20
<i>Color Blindness Simulation</i>	23
<i>CSS Examples</i>	26

Color

CIELCh(78, 29.145, 0.809)

Conversions

Conversions Part 1

Format	Color
Hex	F5ADC1
RGB	245, 173, 193
RGB Percent	96%, 68%, 76%
CMY	0.0388, 0.3212, 0.2427
CMYK	0.00, 0.29, 0.21, 0.04
HSL	343°, 78%, 82%
HSV	343°, 29%, 96%
XYZ	62.2933, 53.2120, 57.4986
YIQ	196.8080, 36.4920, 21.4840

Conversions

Conversions Part 2

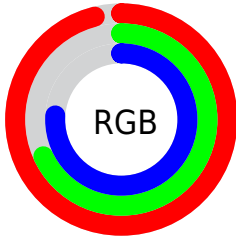
Format	Color
R _Y B	245, 173, 193
Decimal	16100801
CIE Lab	78.00, 29.14, 0.41
CIE LCh	78, 29.145, 0.809
Yxy	53.2120, 0.3601, 0.3076
Android (android.graphics.Color)	4294290881 (0xFFF5ADC1)
YUV	196.8080, -1.8773, 42.2644
Hunter-Lab	72.9466, 24.7751, 4.3285

Details

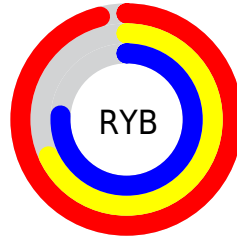
The CIELCh color $78, 29.145, 0.809$ is a light color, and the websafe version is hex `FFCCCC`. A complement of this color would be $92, 26.501, 174.625$, and the grayscale version is $79, 0.010, 296.813$.

A 20% lighter version of the original color is $94, 13.837, 332.258$, and $58, 29.323, 0.567$ is the 20% darker color. If you saturate the color by 10%, you get $72, 39.551, 2.378$, and if you desaturate by 10%, it is $84, 18.885, 359.501$.

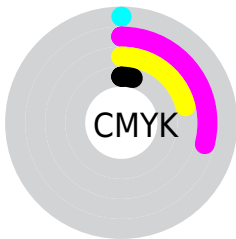
Distribution



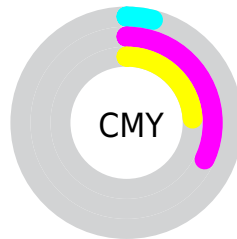
- Red (96%)
- Green (68%)
- Blue (76%)



- Red (96%)
- Yellow (68%)
- Blue (76%)



- Cyan (0%)
- Magenta (29%)
- Yellow (21%)
- Black (4%)



- Cyan (4%)
- Magenta (32%)
- Yellow (24%)

Brightness & Saturation Gradients

These gradients show how the CIELCh color 78, 29.145, 0.809 changes by changing the brightness by 10 percent. The first figure shows a shift by +10% for each color and the second figure -10%.

Similar to the brightness gradients but the following saturation gradients show a change of the CIELCh color 78, 29.145, 0.809 by changing the saturation by 10% instead.

 78, 29.145, 0.809

 78, 29.145, 0.809

 100, 29.145, 0.809

 68, 29.145, 0.809

 98, 29.145, 0.809

 58, 29.145, 0.809

 48, 29.145, 0.809

 38, 29.145, 0.809

 28, 29.145, 0.809

 18, 29.145, 0.809

 8, 29.145, 0.809

 0, 29.145, 0.809

 78, 29.145, 0.809

 78, 29.145, 0.809

72, 39.551, 2.378

84, 18.885,
359.501

67, 49.831, 4.295

90, 8.949, 358.363

62, 59.592, 6.690

97, 0.576, 178.451

58, 68.370, 9.725

99, 3.420, 199.382

55, 75.760, 13.572

53, 81.625, 18.344

52, 86.363, 23.865

52, 86.665, 24.204

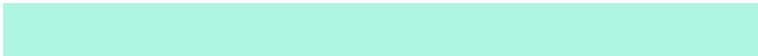
Harmonies

Complementary

The Complementary color scheme is a pair of colors which are on the opposite of each other on the color wheel.



78, 29.145, 0.809



92, 26.501, 174.625

Rectangle

The Rectangle color scheme consists of four colors that form a rectangle on the color wheel.



78, 29.145, 0.809



78, 29.145, 50.809



78, 29.145, 180.809



78, 29.145, 230.809

Sweetspot

The Sweet Spot groups the original color and five complimentary colors.



78, 29.142, 0.812



94, 8.863, 358.324



78, 42.419, 317.527



49, 6.179, 358.483



0, 0.000, 0.000



53, 0.007, 296.813

Same Dimension

The Same Dimension uses a secret algorithm to generate beautiful new colors.



78, 29.142, 0.812



77, 36.136, 1.668



81, 23.987, 40.909



48, 5.420, 358.375



39, 70.019, 23.129



9, 29.732, 12.590

Inverse Universe

The Inverse Universe completely reimagines the original color for something new.



78, 29.142, 0.812



77, 36.136, 1.668



88, 19.605, 223.063



48, 5.420, 358.375



39, 70.019, 23.129



9, 29.732, 12.590

Previews

White Background



This preview shows how the CIELCh color 78, 29.145, 0.809 looks on a white background.

Color Contrast Check

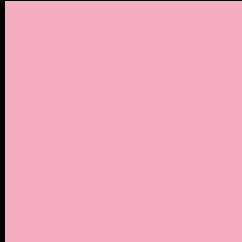
Large Text (above 18pt) WCAG AA × Fail

Any Text WCAG AA × Fail

Large Text (above 18pt) WCAG AAA × Fail

Any Text WCAG AAA × Fail

Black Background



This preview shows how the CIELCh color 78, 29.145, 0.809 looks on a black background.

Color Contrast Check

Large Text (above 18pt) WCAG AA ✓ Pass

Any Text WCAG AA ✓ Pass

Large Text (above 18pt) WCAG AAA ✓ Pass

Any Text WCAG AAA ✓ Pass

If you want to check with other color combinations, try the [Color Contrast Checker](#).

CIELCh 78, 29.145, 0.809

Background



This preview shows how black text looks on a background with the CIELCh color 78, 29.145, 0.809.



This preview shows how white text looks on a background with the CIELCh color 78, 29.145, 0.809.

Color Blindness Simulation

Color vision deficiency is a very complex topic, and I could not describe the different causes any better than Wikipedia does, so if you want to learn more, you should check out their [article about color blindness](#).

Dichromacy



Original Color

78, 29.145, 0.809

Protanopia

78, 6.448, 293.965

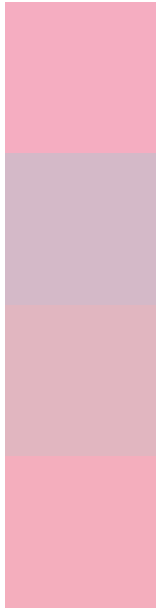
Deuteranopia

78, 10.005, 7.907



Tritanopia
78, 27.628, 7.516

Trichromacy



Original Color
78, 29.145, 0.809

Protanomaly
78, 12.823, 341.765

Deuteranomaly
78, 17.072, 2.734

Tritanomaly
78, 27.799, 5.366

Monochromacy



Original Color
78, 29.145, 0.809

Achromatopsia
80, 0.010, 296.813

Achromatomaly
79, 10.597, 356.558

CSS Examples

Text

The CSS property to change the color of the text to CIELCh 78, 29.145, 0.809 is called "color". The color property can be set on classes, ids or directly on the HTML element.

This example shows how text in the color `rgb(245, 173, 193)` looks like.

```
.text, #text, p{  
    color:rgb(245, 173, 193)  
}
```

If you want to add a text shadow in that color use the text-shadow property, you can generate a text shadow directly with our [CSS Text Shadow Generator](#).

Here you see how black text with a 4 pixel rgb(245, 173, 193) colored shadow looks like.

```
.shadow{ text-shadow: 4px 4px 2px rgb(245, 173, 193) }
```

Border

The CSS property to change the border of an element to CIELCh 78, 29.145, 0.809 is called "border". The border property can be set on classes, ids or directly on the HTML element.

This example shows the color as border, it can be applied via the CSS property "border" or "border-color".

```
.border, #border, table{ border:4px solid rgb(245, 173, 193) }
```

If only the border color should be changed use the property `border-color`.

```
.border{ border-color:rgb(245, 173, 193) }
```

If you want to add a box shadow in that color use:

Here you see how a box with a 4 pixel `rgb(245, 173, 193)` colored shadow looks like.

```
.boxshadow{ -moz-box-shadow:4px 4px 4px 4px rgb(245, 173, 193); -webkit-box-shadow:4px 4px 4px 4px rgb(245, 173, 193); box-shadow:4px 4px 4px 4px rgb(245, 173, 193) }
```

Background

The CSS property to change the background color of an element to CIELCh 78, 29.145, 0.809 is called "background". The background property can be set on classes, ids or directly on the HTML element.

```
.background, #background, body{  
background: rgb(245, 173, 193) }
```

If only the background color should be changed can be used:

```
.background{ background-color: rgb(245,  
173, 193) }
```

This example shows the color as background, it is applied via the CSS property "background".

To optimize and compress your CSS code, you can use our [online CSS compressor and optimizer](#) based on csstidy. If you want to create a linear or radial gradient as background or border, check our [CSS Gradient Generator](#).

Hey! You found this booklet interesting? Support Converting Colors with the new Membership Option!

The pro membership hides all ads, plus gives you double the colors in the color bucket, and more awesome pro features!

[Learn more, Memberships starting at \\$2.50/m!](#)

**Follow me
on Twitter!**

@ConvertingColor