

Converting Colors

CIELCh(78, 29.286, 75.829)

Have a look what the booklet for
CIELCh(78, 29.286, 75.829) contains.

CIELCh(78, 29.104, 76.199)	3
<i>Conversions</i>	4
<i>Details</i>	6
<i>Harmonies</i>	11
<i>Previews</i>	20
<i>Color Blindness Simulation</i>	23
<i>CSS Examples</i>	26

Color

CIELCh(78, 29.104, 76.199)

Conversions

Conversions Part 1

Format	Color
Hex	E0BB8D
RGB	224, 187, 141
RGB Percent	88%, 73%, 55%
CMY	0.1222, 0.2673, 0.4477
CMYK	0.00, 0.17, 0.37, 0.12
HSL	33°, 57%, 72%
HSV	33°, 37%, 88%
XYZ	53.2211, 53.2120, 32.6054
YIQ	192.8190, 36.8180, -6.4620

Conversions

Conversions Part 2

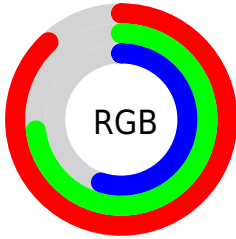
Format	Color
R _Y B	208, 224, 141
Decimal	14728077
CIE Lab	78.00, 6.94, 28.26
CIE LCh	78, 29.104, 76.199
Yxy	53.2120, 0.3828, 0.3827
Android (android.graphics.Color)	4292918157 (0xFFE0BB8D)
YUV	192.8190, -25.5468, 27.3457
Hunter-Lab	72.9466, 2.5755, 24.5614

Details

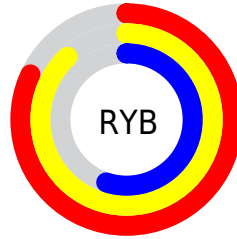
The CIELCh color **78, 29.104, 76.199** is a light color, and the websafe version is hex **FFCC99**. A complement of this color would be **71, 27.139, 267.388**, and the grayscale version is **78, 0.009, 296.813**.

A 20% lighter version of the original color is **96, 24.862, 97.646**, and **58, 29.189, 76.718** is the 20% darker color. If you saturate the color by 10%, you get **75, 37.612, 74.831**, and if you desaturate by 10%, it is **81, 20.858, 77.548**.

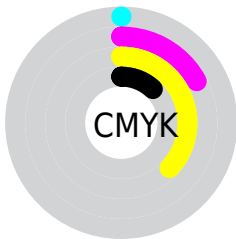
Distribution



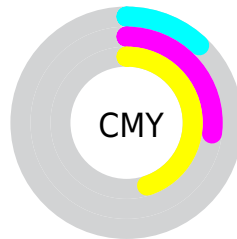
- Red (88%)
- Green (73%)
- Blue (55%)



- Red (82%)
- Yellow (88%)
- Blue (55%)



- Cyan (0%)
- Magenta (17%)
- Yellow (37%)
- Black (12%)



- Cyan (12%)
- Magenta (27%)
- Yellow (45%)


Brightness & Saturation Gradients

These gradients show how the CIELCh color 78, 29.104, 76.199 changes by changing the brightness by 10 percent. The first figure shows a shift by +10% for each color and the second figure -10%.

Similar to the brightness gradients but the following saturation gradients show a change of the CIELCh color 78, 29.104, 76.199 by changing the saturation by 10% instead.

 78, 29.104, 76.199

 78, 29.104, 76.199

 100, 29.104,
76.199

 68, 29.104, 76.199

 98, 29.104, 76.199

 58, 29.104, 76.199

 48, 29.104, 76.199

 38, 29.104, 76.199

 28, 29.104, 76.199

 18, 29.104, 76.199

 8, 29.104, 76.199

 0, 29.104, 76.199

 78, 29.104, 76.199

 78, 29.104, 76.199

75, 37.612, 74.831

81, 20.858, 77.548

72, 46.289, 73.414

84, 12.905, 78.858

70, 54.921, 71.918

87, 5.243, 80.106

67, 63.082, 70.251

90, 2.142, 261.590

65, 70.009, 68.228

93, 9.274, 262.672

63, 74.736, 65.566

96, 8.745, 228.235

62, 75.916, 64.755

98, 10.555,
198.802

Harmonies

Complementary

The Complementary color scheme is a pair of colors which are on the opposite of each other on the color wheel.



78, 29.104, 76.199



71, 27.139, 267.388

Rectangle

The Rectangle color scheme consists of four colors that form a rectangle on the color wheel.



78, 29.104, 76.199



78, 29.104, 126.199



78, 29.104, 256.199



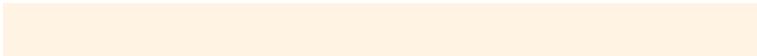
78, 29.104, 306.199

Sweetspot

The Sweet Spot groups the original color and five complimentary colors.



78, 29.104, 76.205



96, 9.135, 79.619



68, 37.073, 350.295



51, 6.154, 79.448



0, 0.000, 0.000



53, 0.007, 296.813

Same Dimension

The Same Dimension uses a secret algorithm to generate beautiful new colors.



78, 29.104, 76.205



85, 38.895, 75.213



87, 42.458, 108.853



46, 4.237, 79.821



49, 63.292, 65.386



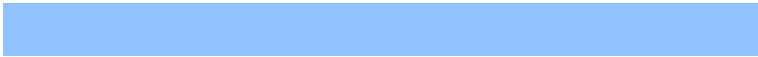
12, 19.782, 66.376

Inverse Universe

The Inverse Universe completely reimagines the original color for something new.



71, 27.139, 267.388



77, 35.755, 269.141



62, 46.643, 296.568



45, 4.178, 262.376



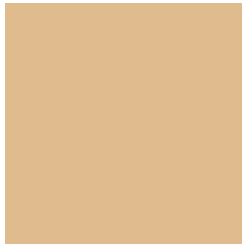
35, 60.578, 288.790



7, 20.709, 279.669

Previews

White Background



This preview shows how the CIELCh color 78, 29.104, 76.199 looks on a white background.

Color Contrast Check

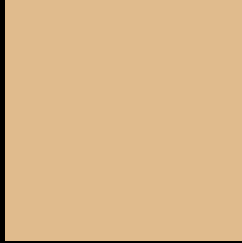
Large Text (above 18pt) WCAG AA × Fail

Any Text WCAG AA × Fail

Large Text (above 18pt) WCAG AAA × Fail

Any Text WCAG AAA × Fail

Black Background



This preview shows how the CIELCh color 78, 29.104, 76.199 looks on a black background.

Color Contrast Check

Large Text (above 18pt) WCAG AA ✓ Pass

Any Text WCAG AA ✓ Pass

Large Text (above 18pt) WCAG AAA ✓ Pass

Any Text WCAG AAA ✓ Pass

If you want to check with other color combinations, try the [Color Contrast Checker](#).

CIELCh 78, 29.104, 76.199

Background



This preview shows how black text looks on a background with the CIELCh color 78, 29.104, 76.199.



This preview shows how white text looks on a background with the CIELCh color 78, 29.104, 76.199.

Color Blindness Simulation

Color vision deficiency is a very complex topic, and I could not describe the different causes any better than Wikipedia does, so if you want to learn more, you should check out their [article about color blindness](#).

Dichromacy



Original Color

78, 29.104, 76.199

Protanopia

78, 27.132, 95.583

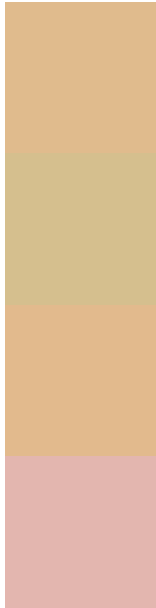
Deuteranopia

78, 29.759, 71.227



Tritanopia
78, 19.874, 359.170

Trichromacy



Original Color
78, 29.104, 76.199

Protanomaly
78, 27.606, 88.696

Deuteranomaly
78, 29.401, 73.684

Tritanomaly
78, 18.039, 32.620

Monochromacy



Original Color
78, 29.104, 76.199

Achromatopsia
78, 0.009, 296.813

Achromatomaly
78, 10.358, 80.382

CSS Examples

Text

The CSS property to change the color of the text to CIELCh 78, 29.104, 76.199 is called "color". The color property can be set on classes, ids or directly on the HTML element.

This example shows how text in the color `rgb(224, 187, 141)` looks like.

```
.text, #text, p{  
    color:rgb(224, 187, 141)  
}
```

If you want to add a text shadow in that color use the text-shadow property, you can generate a text shadow directly with our [CSS Text Shadow Generator](#).

Here you see how black text with a 4 pixel rgb(224, 187, 141) colored shadow looks like.

```
.shadow{ text-shadow: 4px 4px 2px rgb(224, 187, 141) }
```

Border

The CSS property to change the border of an element to CIELCh 78, 29.104, 76.199 is called "border". The border property can be set on classes, ids or directly on the HTML element.

This example shows the color as border, it can be applied via the CSS property "border" or "border-color".

```
.border, #border, table{ border:4px solid rgb(224, 187, 141) }
```

If only the border color should be changed use the property `border-color`.

```
.border{ border-color:rgb(224, 187, 141) }
```

If you want to add a box shadow in that color use:

Here you see how a box with a 4 pixel `rgb(224, 187, 141)` colored shadow looks like.

```
.boxshadow{ -moz-box-shadow:4px 4px 4px  
4px rgb(224, 187, 141); -webkit-box-  
shadow:4px 4px 4px 4px rgb(224, 187, 141);  
box-shadow:4px 4px 4px 4px rgb(224, 187,  
141) }
```

Background

The CSS property to change the background color of an element to CIELCh 78, 29.104, 76.199 is called "background". The background property can be set on classes, ids or directly on the HTML element.

```
.background, #background, body{  
background: rgb(224, 187, 141) }
```

If only the background color should be changed can be used:

```
.background{ background-color: rgb(224,  
187, 141) }
```

This example shows the color as background, it is applied via the CSS property "background".

To optimize and compress your CSS code, you can use our [online CSS compressor and optimizer](#) based on csstidy. If you want to create a linear or radial gradient as background or border, check our [CSS Gradient Generator](#).

Hey! You found this booklet interesting? Support Converting Colors with the new Membership Option!

The pro membership hides all ads, plus gives you double the colors in the color bucket, and more awesome pro features!

[Learn more, Memberships starting at \\$2.50/m!](#)

**Follow me
on Twitter!**

@ConvertingColor