

Converting Colors

CIELCh(78, 30.148, 4.869)

Have a look what the booklet for
CIELCh(78, 30.148, 4.869) contains.

CIELCh(78, 30.275, 4.956)	3
<i>Conversions</i>	4
<i>Details</i>	6
<i>Harmonies</i>	11
<i>Previews</i>	20
<i>Color Blindness Simulation</i>	23
<i>CSS Examples</i>	26

Color

CIELCh(78, 30.275, 4.956)

Conversions

Conversions Part 1

Format	Color
Hex	F8ACBD
RGB	248, 172, 189
RGB Percent	97%, 67%, 74%
CMY	0.0269, 0.3250, 0.2583
CMYK	0.00, 0.31, 0.24, 0.03
HSL	347°, 85%, 82%
HSV	347°, 31%, 97%
XYZ	62.7331, 53.2120, 55.1788
YIQ	196.6620, 39.8390, 21.3990

Conversions

Conversions Part 2

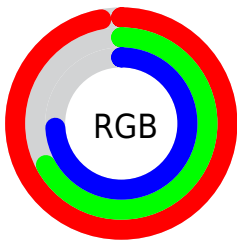
Format	Color
R _Y B	248, 172, 189
Decimal	16297149
CIE Lab	78.00, 30.16, 2.62
CIE LCh	78, 30.275, 4.956
Yxy	53.2120, 0.3666, 0.3110
Android (android.graphics.Color)	4294487229 (0xFFF8ACBD)
YUV	196.6620, -3.7774, 45.0234
Hunter-Lab	72.9466, 25.8513, 6.2140

Details

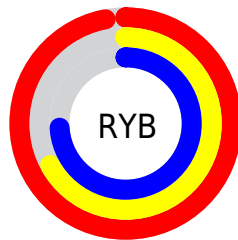
The CIELCh color $78, 30.275, 4.956$ is a light color, and the websafe version is hex `FFCCCC`. A complement of this color would be $92, 26.857, 178.521$, and the grayscale version is $79, 0.010, 296.813$.

A 20% lighter version of the original color is $93, 13.014, 338.032$, and $58, 30.145, 4.754$ is the 20% darker color. If you saturate the color by 10%, you get $72, 40.798, 6.611$, and if you desaturate by 10%, it is $84, 19.967, 3.597$.

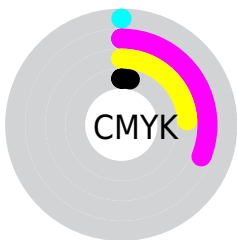
Distribution



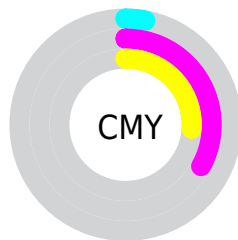
- Red (97%)
- Green (67%)
- Blue (74%)



- Red (97%)
- Yellow (67%)
- Blue (74%)



- Cyan (0%)
- Magenta (31%)
- Yellow (24%)
- Black (3%)



- Cyan (3%)
- Magenta (33%)
- Yellow (26%)

Brightness & Saturation Gradients

These gradients show how the CIELCh color 78, 30.275, 4.956 changes by changing the brightness by 10 percent. The first figure shows a shift by +10% for each color and the second figure -10%.

Similar to the brightness gradients but the following saturation gradients show a change of the CIELCh color 78, 30.275, 4.956 by changing the saturation by 10% instead.

 78, 30.275, 4.956

 78, 30.275, 4.956

 100, 30.275, 4.956

 68, 30.275, 4.956

 98, 30.275, 4.956

 58, 30.275, 4.956

 48, 30.275, 4.956

 38, 30.275, 4.956

 28, 30.275, 4.956

 18, 30.275, 4.956

 8, 30.275, 4.956

 0, 30.275, 4.956

 78, 30.275, 4.956

 78, 30.275, 4.956

72, 40.798, 6.611

84, 19.967, 3.597

67, 51.274, 8.658

91, 10.044, 2.434

62, 61.320, 11.239

97, 0.585, 0.515

58, 70.500, 14.515

100, 2.380,
199.533

55, 78.458, 18.634

53, 85.101, 23.621

52, 90.477, 28.741

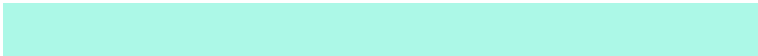
Harmonies

Complementary

The Complementary color scheme is a pair of colors which are on the opposite of each other on the color wheel.



78, 30.275, 4.956



92, 26.857, 178.521

Rectangle

The Rectangle color scheme consists of four colors that form a rectangle on the color wheel.



78, 30.275, 4.956



78, 30.275, 54.956



78, 30.275, 184.956



78, 30.275, 234.956

Sweetspot

The Sweet Spot groups the original color and five complimentary colors.



78, 30.272, 4.959



94, 8.659, 2.257



78, 45.180, 319.148



49, 6.039, 2.417



0, 0.000, 0.000



53, 0.007, 296.813

Same Dimension

The Same Dimension uses a secret algorithm to generate beautiful new colors.



78, 30.272, 4.959



76, 37.796, 5.981



82, 24.810, 46.132



49, 5.386, 2.310



39, 73.044, 27.718



9, 30.879, 16.582

Inverse Universe

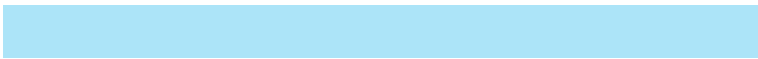
The Inverse Universe completely reimagines the original color for something new.



78, 30.272, 4.959



76, 37.796, 5.981



87, 20.335, 230.031



49, 5.386, 2.310



39, 73.044, 27.718



9, 30.879, 16.582

Previews

White Background



This preview shows how the CIELCh color 78, 30.275, 4.956 looks on a white background.

Color Contrast Check

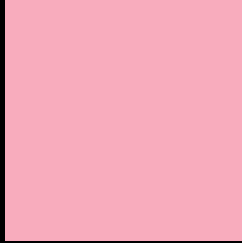
Large Text (above 18pt) WCAG AA × Fail

Any Text WCAG AA × Fail

Large Text (above 18pt) WCAG AAA × Fail

Any Text WCAG AAA × Fail

Black Background



This preview shows how the CIELCh color 78, 30.275, 4.956 looks on a black background.

Color Contrast Check

Large Text (above 18pt) WCAG AA ✓ Pass

Any Text WCAG AA ✓ Pass

Large Text (above 18pt) WCAG AAA ✓ Pass

Any Text WCAG AAA ✓ Pass

If you want to check with other color combinations, try the [Color Contrast Checker](#).

CIELCh 78, 30.275, 4.956

Background



This preview shows how black text looks on a background with the CIELCh color 78, 30.275, 4.956.

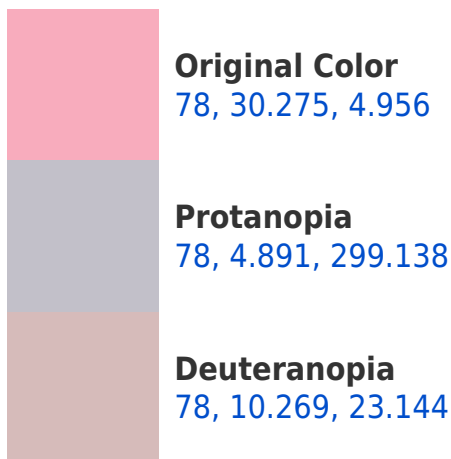


This preview shows how white text looks on a background with the CIELCh color 78, 30.275, 4.956.

Color Blindness Simulation

Color vision deficiency is a very complex topic, and I could not describe the different causes any better than Wikipedia does, so if you want to learn more, you should check out their [article about color blindness](#).

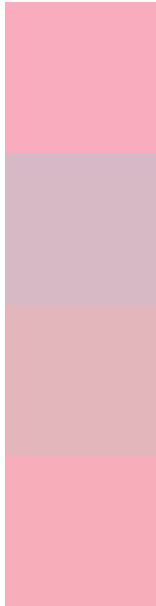
Dichromacy





Tritanopia
78, 29.554, 8.687

Trichromacy



Original Color
78, 30.275, 4.956

Protanomaly
78, 12.558, 349.786

Deuteranomaly
78, 16.987, 11.853

Tritanomaly
78, 29.620, 7.675

Monochromacy



Original Color
78, 30.275, 4.956

Achromatopsia
80, 0.010, 296.813

Achromatomaly
79, 10.968, 3.377

CSS Examples

Text

The CSS property to change the color of the text to CIELCh 78, 30.275, 4.956 is called "color". The color property can be set on classes, ids or directly on the HTML element.

This example shows how text in the color `rgb(248, 172, 189)` looks like.

```
.text, #text, p{  
    color:rgb(248, 172, 189)  
}
```

If you want to add a text shadow in that color use the text-shadow property, you can generate a text shadow directly with our [CSS Text Shadow Generator](#).

Here you see how black text with a 4 pixel rgb(248, 172, 189) colored shadow looks like.

```
.shadow{ text-shadow: 4px 4px 2px rgb(248, 172, 189) }
```

Border

The CSS property to change the border of an element to CIELCh 78, 30.275, 4.956 is called "border". The border property can be set on classes, ids or directly on the HTML element.

This example shows the color as border, it can be applied via the CSS property "border" or "border-color".

```
.border, #border, table{ border:4px solid rgb(248, 172, 189) }
```

If only the border color should be changed use the property `border-color`.

```
.border{ border-color:rgb(248, 172, 189) }
```

If you want to add a box shadow in that color use:

Here you see how a box with a 4 pixel `rgb(248, 172, 189)` colored shadow looks like.

```
.boxshadow{ -moz-box-shadow:4px 4px 4px  
4px rgb(248, 172, 189); -webkit-box-  
shadow:4px 4px 4px 4px rgb(248, 172, 189);  
box-shadow:4px 4px 4px 4px rgb(248, 172,  
189) }
```

Background

The CSS property to change the background color of an element to CIELCh 78, 30.275, 4.956 is called "background". The background property can be set on classes, ids or directly on the HTML element.

```
.background, #background, body{  
background: rgb(248, 172, 189) }
```

If only the background color should be changed can be used:

```
.background{ background-color: rgb(248,  
172, 189) }
```

This example shows the color as background, it is applied via the CSS property "background".

To optimize and compress your CSS code, you can use our [online CSS compressor and optimizer](#) based on csstidy. If you want to create a linear or radial gradient as background or border, check our [CSS Gradient Generator](#).

Hey! You found this booklet interesting? Support Converting Colors with the new Membership Option!

The pro membership hides all ads, plus gives you double the colors in the color bucket, and more awesome pro features!

[Learn more, Memberships starting at \\$2.50/m!](#)

**Follow me
on Twitter!**

@ConvertingColor