

Converting Colors

CIELCh(78, 32.181, 6.901)

Have a look what the booklet for
CIELCh(78, 32.181, 6.901) contains.

CIELCh(78, 32.085, 7.147)	3
<i>Conversions</i>	4
<i>Details</i>	6
<i>Harmonies</i>	11
<i>Previews</i>	20
<i>Color Blindness Simulation</i>	23
<i>CSS Examples</i>	26

Color

CIELCh(78, 32.085, 7.147)

Conversions

Conversions Part 1

Format	Color
Hex	FCABBB
RGB	252, 171, 187
RGB Percent	99%, 67%, 73%
CMY	0.0131, 0.3306, 0.2679
CMYK	0.00, 0.32, 0.26, 0.01
HSL	348°, 92%, 83%
HSV	348°, 32%, 99%
XYZ	63.4595, 53.2120, 53.7622
YIQ	197.0430, 43.1400, 22.1480

Conversions

Conversions Part 2

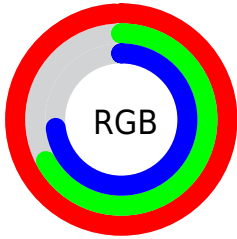
Format	Color
R _Y B	252, 171, 187
Decimal	16559035
CIE Lab	78.00, 31.84, 3.99
CIE LCh	78, 32.085, 7.147
Yxy	53.2120, 0.3723, 0.3122
Android (android.graphics.Color)	4294749115 (0xFFFCABBB)
YUV	197.0430, -4.9512, 48.1973
Hunter-Lab	72.9466, 27.6288, 7.3654

Details

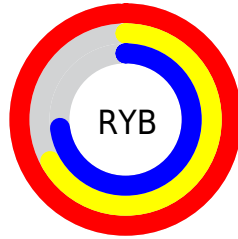
The CIELCh color **78, 32.085, 7.147** is a light color, and the websafe version is hex **FF9999**. A complement of this color would be **93, 27.966, 180.404**, and the grayscale version is **79, 0.010, 296.813**.

A 20% lighter version of the original color is **93, 12.962, 340.828**, and **58, 32.054, 7.229** is the 20% darker color. If you saturate the color by 10%, you get **72, 42.780, 8.870**, and if you desaturate by 10%, it is **84, 21.623, 5.745**.

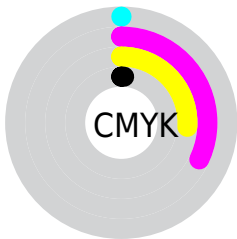
Distribution



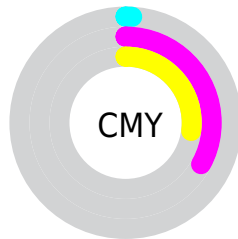
- Red (99%)
- Green (67%)
- Blue (73%)



- Red (99%)
- Yellow (67%)
- Blue (73%)



- Cyan (0%)
- Magenta (32%)
- Yellow (26%)
- Black (1%)



- Cyan (1%)
- Magenta (33%)
- Yellow (27%)

Brightness & Saturation Gradients

These gradients show how the CIELCh color 78, 32.085, 7.147 changes by changing the brightness by 10 percent. The first figure shows a shift by +10% for each color and the second figure -10%.

Similar to the brightness gradients but the following saturation gradients show a change of the CIELCh color 78, 32.085, 7.147 by changing the saturation by 10% instead.

 78, 32.085, 7.147

 78, 32.085, 7.147

 100, 32.085, 7.147

 68, 32.085, 7.147

 98, 32.085, 7.147

 58, 32.085, 7.147

 48, 32.085, 7.147

 38, 32.085, 7.147

 28, 32.085, 7.147

 18, 32.085, 7.147

 8, 32.085, 7.147

 0, 32.085, 7.147

 78, 32.085, 7.147

 78, 32.085, 7.147

72, 42.780, 8.870

84, 21.623, 5.745

67, 53.440, 11.018

91, 11.573, 4.562

62, 63.676, 13.738

97, 2.014, 3.333

58, 73.065, 17.189

100, 1.161,
199.902

55, 81.281, 21.487

54, 88.261, 26.578

53, 93.093, 30.758

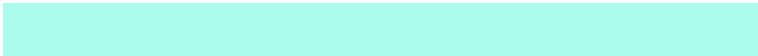
Harmonies

Complementary

The Complementary color scheme is a pair of colors which are on the opposite of each other on the color wheel.



78, 32.085, 7.147



93, 27.966, 180.404

Rectangle

The Rectangle color scheme consists of four colors that form a rectangle on the color wheel.



78, 32.085, 7.147



78, 32.085, 57.147



78, 32.085, 187.147



78, 32.085, 237.147

Sweetspot

The Sweet Spot groups the original color and five complimentary colors.



78, 32.082, 7.150



93, 9.554, 4.324



78, 48.367, 320.246



49, 6.542, 4.478



0, 0.000, 0.000



53, 0.007, 296.813

Same Dimension

The Same Dimension uses a secret algorithm to generate beautiful new colors.



78, 32.082, 7.150



75, 39.799, 8.289



83, 26.236, 49.660



49, 5.335, 4.268



39, 74.283, 29.725



9, 31.004, 17.893

Inverse Universe

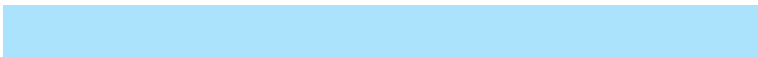
The Inverse Universe completely reimagines the original color for something new.



78, 32.082, 7.150



75, 39.799, 8.289



87, 21.517, 234.888



49, 5.335, 4.268



39, 74.283, 29.725



9, 31.004, 17.893

Previews

White Background



This preview shows how the CIELCh color 78, 32.085, 7.147 looks on a white background.

Color Contrast Check

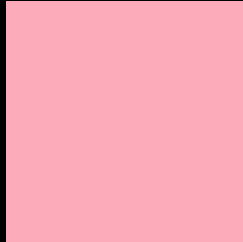
Large Text (above 18pt) WCAG AA × Fail

Any Text WCAG AA × Fail

Large Text (above 18pt) WCAG AAA × Fail

Any Text WCAG AAA × Fail

Black Background



This preview shows how the CIELCh color 78, 32.085, 7.147 looks on a black background.

Color Contrast Check

Large Text (above 18pt) WCAG AA ✓ Pass

Any Text WCAG AA ✓ Pass

Large Text (above 18pt) WCAG AAA ✓ Pass

Any Text WCAG AAA ✓ Pass

If you want to check with other color combinations, try the [Color Contrast Checker](#).

CIELCh 78, 32.085, 7.147

Background



This preview shows how black text looks on a background with the CIELCh color 78, 32.085, 7.147.



This preview shows how white text looks on a background with the CIELCh color 78, 32.085, 7.147.

Color Blindness Simulation

Color vision deficiency is a very complex topic, and I could not describe the different causes any better than Wikipedia does, so if you want to learn more, you should check out their [article about color blindness](#).

Dichromacy



Original Color

78, 32.085, 7.147

Protanopia

78, 3.925, 306.676

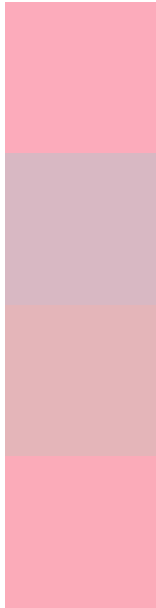
Deuteranopia

78, 10.808, 28.675



Tritanopia
78, 31.526, 9.760

Trichromacy



Original Color
78, 32.085, 7.147

Protanomaly
78, 13.325, 354.404

Deuteranomaly
78, 18.134, 14.220

Tritanomaly
78, 31.578, 8.809

Monochromacy



Original Color
78, 32.085, 7.147

Achromatopsia
80, 0.010, 296.813

Achromatomaly
79, 11.711, 4.547

CSS Examples

Text

The CSS property to change the color of the text to CIELCh 78, 32.085, 7.147 is called "color". The color property can be set on classes, ids or directly on the HTML element.

This example shows how text in the color `rgb(252, 171, 187)` looks like.

```
.text, #text, p{  
    color:rgb(252, 171, 187)  
}
```

If you want to add a text shadow in that color use the text-shadow property, you can generate a text shadow directly with our [CSS Text Shadow Generator](#).

Here you see how black text with a 4 pixel rgb(252, 171, 187) colored shadow looks like.

```
.shadow{ text-shadow: 4px 4px 2px rgb(252, 171, 187) }
```

Border

The CSS property to change the border of an element to CIELCh 78, 32.085, 7.147 is called "border". The border property can be set on classes, ids or directly on the HTML element.

This example shows the color as border, it can be applied via the CSS property "border" or "border-color".

```
.border, #border, table{ border:4px solid rgb(252, 171, 187) }
```

If only the border color should be changed use the property `border-color`.

```
.border{ border-color:rgb(252, 171, 187) }
```

If you want to add a box shadow in that color use:

Here you see how a box with a 4 pixel `rgb(252, 171, 187)` colored shadow looks like.

```
.boxshadow{ -moz-box-shadow:4px 4px 4px  
4px rgb(252, 171, 187); -webkit-box-  
shadow:4px 4px 4px 4px rgb(252, 171, 187);  
box-shadow:4px 4px 4px 4px rgb(252, 171,  
187) }
```

Background

The CSS property to change the background color of an element to CIELCh 78, 32.085, 7.147 is called "background". The background property can be set on classes, ids or directly on the HTML element.

```
.background, #background, body{  
background: rgb(252, 171, 187) }
```

If only the background color should be changed can be used:

```
.background{ background-color: rgb(252,  
171, 187) }
```

This example shows the color as background, it is applied via the CSS property "background".

To optimize and compress your CSS code, you can use our [online CSS compressor and optimizer](#) based on csstidy. If you want to create a linear or radial gradient as background or border, check our [CSS Gradient Generator](#).

Hey! You found this booklet interesting? Support Converting Colors with the new Membership Option!

The pro membership hides all ads, plus gives you double the colors in the color bucket, and more awesome pro features!

[Learn more, Memberships starting at \\$2.50/m!](#)

**Follow me
on Twitter!**

@ConvertingColor