

Converting Colors

CIELCh(78, 34.418, 24.167)

Have a look what the booklet for
CIELCh(78, 34.418, 24.167) contains.

CIELCh(78, 33.970, 24.136)	3
<i>Conversions</i>	4
<i>Details</i>	6
<i>Harmonies</i>	11
<i>Previews</i>	20
<i>Color Blindness Simulation</i>	23
<i>CSS Examples</i>	26

Color

CIELCh(78, 33.970, 24.136)

Conversions

Conversions Part 1

Format	Color
Hex	FFABA9
RGB	255, 171, 169
RGB Percent	100%, 67%, 66%
CMY	0.0000, 0.3309, 0.3388
CMYK	0.00, 0.33, 0.34, 0.00
HSL	1°, 100%, 83%
HSV	1°, 34%, 100%
XYZ	63.0963, 53.2120, 44.2818
YIQ	195.8880, 50.7060, 17.1860

Conversions

Conversions Part 2

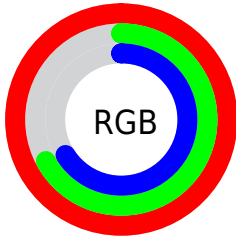
Format	Color
R _Y B	255, 171, 169
Decimal	16755625
CIE Lab	78.00, 31.00, 13.89
CIE LCh	78, 33.970, 24.136
Yxy	53.2120, 0.3929, 0.3314
Android (android.graphics.Color)	4294945705 (0xFFFFABA9)
YUV	195.8880, -13.2558, 51.8412
Hunter-Lab	72.9466, 26.7399, 15.0709

Details

The CIELCh color **78, 33.970, 24.136** is a light color, and the websafe version is hex **FF9999**. A complement of this color would be **94, 26.476, 200.051**, and the grayscale version is **79, 0.010, 296.813**.

A 20% lighter version of the original color is **92, 10.373, 28.580**, and **58, 33.372, 24.184** is the 20% darker color. If you saturate the color by 10%, you get **72, 45.225, 25.583**, and if you desaturate by 10%, it is **84, 22.852, 23.028**.

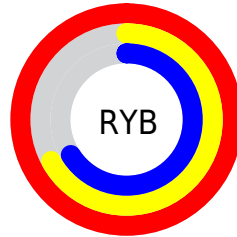
Distribution



Red (100%)

Green (67%)

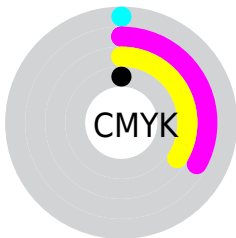
Blue (66%)



Red (100%)

Yellow (67%)

Blue (66%)

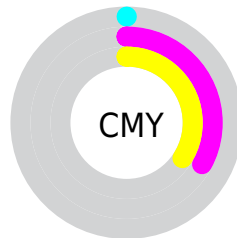


Cyan (0%)

Magenta (33%)

Yellow (34%)

Black (0%)



Cyan (0%)

Magenta (33%)

Yellow (34%)


Brightness & Saturation Gradients

These gradients show how the CIELCh color 78, 33.970, 24.136 changes by changing the brightness by 10 percent. The first figure shows a shift by +10% for each color and the second figure -10%.

Similar to the brightness gradients but the following saturation gradients show a change of the CIELCh color 78, 33.970, 24.136 by changing the saturation by 10% instead.

 78, 33.970, 24.136

 78, 33.970, 24.136

 100, 33.970,
24.136

 68, 33.970, 24.136

 98, 33.970, 24.136

 58, 33.970, 24.136

 48, 33.970, 24.136

 38, 33.970, 24.136

 28, 33.970, 24.136

 18, 33.970, 24.136

 8, 33.970, 24.136

 0, 33.970, 24.136

 78, 33.970, 24.136

 78, 33.970, 24.136

72, 45.225, 25.583

84, 22.852, 23.028

67, 57.260, 27.487

91, 12.761, 22.178

62, 69.509, 29.933

97, 3.429, 21.409

58, 81.528, 32.931

100, 0.012,
296.813

55, 92.581, 36.232

54, 101.064,
39.012

53, 104.296,
40.164

Harmonies

Complementary

The Complementary color scheme is a pair of colors which are on the opposite of each other on the color wheel.



78, 33.970, 24.136



94, 26.476, 200.051

Rectangle

The Rectangle color scheme consists of four colors that form a rectangle on the color wheel.



78, 33.970, 24.136



78, 33.970, 74.136



78, 33.970, 204.136



78, 33.970, 254.136

Sweetspot

The Sweet Spot groups the original color and five complimentary colors.



78, 33.698, 24.131



93, 9.048, 21.893



80, 53.362, 326.750



49, 6.208, 21.994



0, 0.000, 0.000



53, 0.007, 296.813

Same Dimension

The Same Dimension uses a secret algorithm to generate beautiful new colors.



78, 33.698, 24.131



74, 41.838, 25.123



88, 28.813, 72.862



50, 5.134, 21.857



40, 83.907, 40.235



10, 32.888, 28.314

Inverse Universe

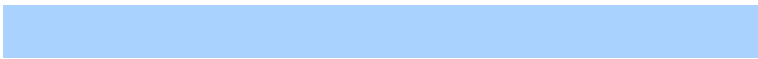
The Inverse Universe completely reimagines the original color for something new.



94, 26.476, 200.051



93, 31.003, 199.857



83, 26.439, 262.836



52, 4.829, 201.031



69, 39.066, 200.111



23, 18.041, 199.648

Previews

White Background



This preview shows how the CIELCh color 78, 33.970, 24.136 looks on a white background.

Color Contrast Check

Large Text (above 18pt) WCAG AA × Fail

Any Text WCAG AA × Fail

Large Text (above 18pt) WCAG AAA × Fail

Any Text WCAG AAA × Fail

Black Background



This preview shows how the CIELCh color 78, 33.970, 24.136 looks on a black background.

Color Contrast Check

Large Text (above 18pt) WCAG AA ✓ Pass

Any Text WCAG AA ✓ Pass

Large Text (above 18pt) WCAG AAA ✓ Pass

Any Text WCAG AAA ✓ Pass

If you want to check with other color combinations, try the [Color Contrast Checker](#).

CIELCh 78, 33.970, 24.136

Background



This preview shows how black text looks on a background with the CIELCh color 78, 33.970, 24.136.

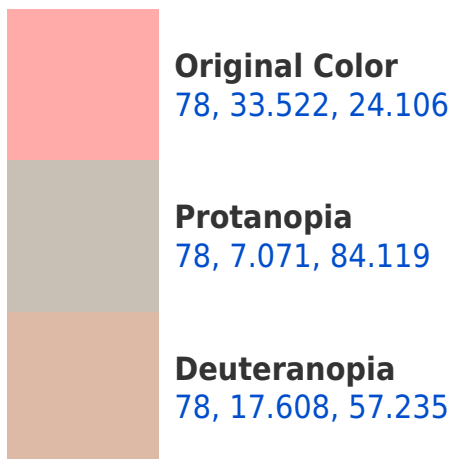


This preview shows how white text looks on a background with the CIELCh color 78, 33.970, 24.136.

Color Blindness Simulation

Color vision deficiency is a very complex topic, and I could not describe the different causes any better than Wikipedia does, so if you want to learn more, you should check out their [article about color blindness](#).

Dichromacy



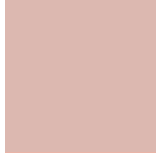


Tritanopia
78, 33.898, 10.919

Trichromacy



Original Color
78, 33.522, 24.106



Protanomaly
78, 14.671, 37.256



Deuteranomaly
78, 22.343, 38.896



Tritanomaly
78, 33.432, 16.129

Monochromacy



Original Color
78, 33.522, 24.106



Achromatopsia
79, 0.010, 296.813



Achromatomaly
78, 11.433, 22.939

CSS Examples

Text

The CSS property to change the color of the text to CIELCh 78, 33.970, 24.136 is called "color". The color property can be set on classes, ids or directly on the HTML element.

This example shows how text in the color `rgb(255, 171, 169)` looks like.

```
.text, #text, p{  
    color:rgb(255, 171, 169)  
}
```

If you want to add a text shadow in that color use the text-shadow property, you can generate a text shadow directly with our [CSS Text Shadow Generator](#).

Here you see how black text with a 4 pixel rgb(255, 171, 169) colored shadow looks like.

```
.shadow{ text-shadow: 4px 4px 2px rgb(255, 171, 169) }
```

Border

The CSS property to change the border of an element to CIELCh 78, 33.970, 24.136 is called "border". The border property can be set on classes, ids or directly on the HTML element.

This example shows the color as border, it can be applied via the CSS property "border" or "border-color".

```
.border, #border, table{ border:4px solid rgb(255, 171, 169) }
```

If only the border color should be changed use the property `border-color`.

```
.border{ border-color:rgb(255, 171, 169) }
```

If you want to add a box shadow in that color use:

Here you see how a box with a 4 pixel `rgb(255, 171, 169)` colored shadow looks like.

```
.boxshadow{ -moz-box-shadow:4px 4px 4px  
4px rgb(255, 171, 169); -webkit-box-  
shadow:4px 4px 4px 4px rgb(255, 171, 169);  
box-shadow:4px 4px 4px 4px rgb(255, 171,  
169) }
```

Background

The CSS property to change the background color of an element to CIELCh 78, 33.970, 24.136 is called "background". The background property can be set on classes, ids or directly on the HTML element.

```
.background, #background, body{  
background: rgb(255, 171, 169) }
```

If only the background color should be changed can be used:

```
.background{ background-color: rgb(255,  
171, 169) }
```

This example shows the color as background, it is applied via the CSS property "background".

To optimize and compress your CSS code, you can use our [online CSS compressor and optimizer](#) based on csstidy. If you want to create a linear or radial gradient as background or border, check our [CSS Gradient Generator](#).

Hey! You found this booklet interesting? Support Converting Colors with the new Membership Option!

The pro membership hides all ads, plus gives you double the colors in the color bucket, and more awesome pro features!

[Learn more, Memberships starting at \\$2.50/m!](#)

**Follow me
on Twitter!**

@ConvertingColor