

Converting Colors

CIELCh(78, 5.925, 37.365)

Have a look what the booklet for
CIELCh(78, 5.925, 37.365) contains.

CIELCh(78, 6.037, 40.395)	3
<i>Conversions</i>	4
<i>Details</i>	6
<i>Harmonies</i>	11
<i>Previews</i>	20
<i>Color Blindness Simulation</i>	23
<i>CSS Examples</i>	26

Color

CIELCh(78, 6.037, 40.395)

Conversions

Conversions Part 1

Format	Color
Hex	CDBEBA
RGB	205, 190, 186
RGB Percent	80%, 75%, 73%
CMY	0.1970, 0.2558, 0.2715
CMYK	0.00, 0.07, 0.09, 0.20
HSL	13°, 16%, 77%
HSV	13°, 9%, 80%
XYZ	52.3178, 53.2120, 53.8434
YIQ	194.0290, 10.2240, 1.9360

Conversions

Conversions Part 2

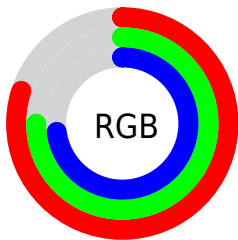
Format	Color
RYB	205, 191, 186
Decimal	13483706
CIELab	78.00, 4.60, 3.91
CIELCh	78, 6.037, 40.395
Yxy	53.2120, 0.3283, 0.3339
Android (android.graphics.Color)	4291673786 (0xFFCDBEBA)
YUV	194.0290, -3.9583, 9.6216
Hunter-Lab	72.9466, 0.3650, 7.2994

Details

The CIELCh color $78, 6.037, 40.395$ is a light color, and the websafe version is hex `CCCCCC`. A complement of this color would be $80, 5.703, 221.134$, and the grayscale version is $78, 0.009, 296.813$.

A 20% lighter version of the original color is $97, 3.779, 51.998$, and $58, 6.076, 41.683$ is the 20% darker color. If you saturate the color by 10%, you get $73, 13.069, 40.314$, and if you desaturate by 10%, it is $83, 0.456, 221.958$.

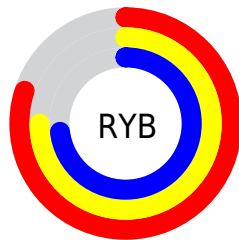
Distribution



Red (80%)

Green (75%)

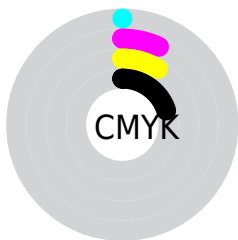
Blue (73%)



Red (80%)

Yellow (75%)

Blue (73%)

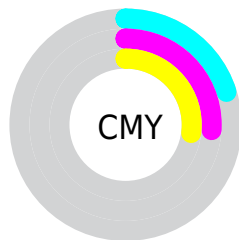


Cyan (0%)

Magenta (7%)

Yellow (9%)

Black (20%)



Cyan (20%)

Magenta (26%)

Yellow (27%)

Brightness & Saturation Gradients

These gradients show how the CIELCh color 78, 6.037, 40.395 changes by changing the brightness by 10 percent. The first figure shows a shift by +10% for each color and the second figure -10%.

Similar to the brightness gradients but the following saturation gradients show a change of the CIELCh color 78, 6.037, 40.395 by changing the saturation by 10% instead.

 78, 6.037, 40.395

 78, 6.037, 40.395

 100, 6.037, 40.395

 68, 6.037, 40.395

 98, 6.037, 40.395

 58, 6.037, 40.395

 48, 6.037, 40.395

 38, 6.037, 40.395

 28, 6.037, 40.395

 18, 6.037, 40.395

 8, 6.037, 40.395

 0, 6.037, 40.395

 78, 6.037, 40.395

 78, 6.037, 40.395

73, 13.069, 40.314

83, 0.456, 221.958

69, 20.691, 40.299

87, 6.461, 221.148

65, 28.935, 40.432

92, 12.033,
221.468

60, 37.803, 40.753

97, 16.438,
199.439

57, 47.245, 41.291

53, 57.106, 42.039

97, 16.633,
198.401

50, 67.028, 42.900

47, 76.199, 43.557

45, 83.420, 43.622

Harmonies

Complementary

The Complementary color scheme is a pair of colors which are on the opposite of each other on the color wheel.



78, 6.037, 40.395



80, 5.703, 221.134

Rectangle

The Rectangle color scheme consists of four colors that form a rectangle on the color wheel.



78, 6.037, 40.395



78, 6.037, 90.395



78, 6.037, 220.395



78, 6.037, 270.395

Sweetspot

The Sweet Spot groups the original color and five complimentary colors.



78, 6.036, 40.417



98, 2.273, 40.366



77, 10.761, 331.074



52, 1.729, 40.406



0, 0.000, 0.000



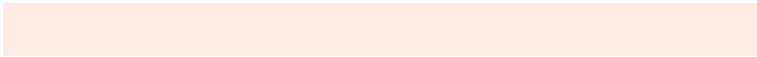
53, 0.007, 296.813

Same Dimension

The Same Dimension uses a secret algorithm to generate beautiful new colors.



78, 6.036, 40.417



94, 8.618, 40.397



80, 7.354, 92.543



41, 3.682, 40.416



37, 71.350, 44.049



5, 15.927, 31.234

Inverse Universe

The Inverse Universe completely reimagines the original color for something new.



80, 5.703, 221.134



97, 8.042, 221.195



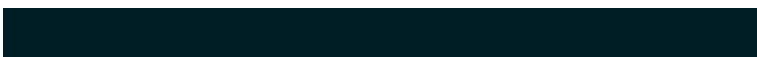
77, 7.377, 274.912



42, 3.476, 221.137



51, 31.984, 237.531



10, 11.737, 228.130

Previews

White Background



This preview shows how the CIELCh color 78, 6.037, 40.395 looks on a white background.

Color Contrast Check

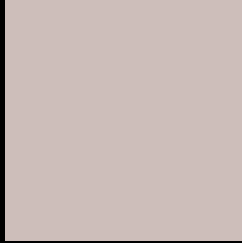
Large Text (above 18pt) WCAG AA × Fail

Any Text WCAG AA × Fail

Large Text (above 18pt) WCAG AAA × Fail

Any Text WCAG AAA × Fail

Black Background



This preview shows how the CIELCh color 78, 6.037, 40.395 looks on a black background.

Color Contrast Check

Large Text (above 18pt) WCAG AA ✓ Pass

Any Text WCAG AA ✓ Pass

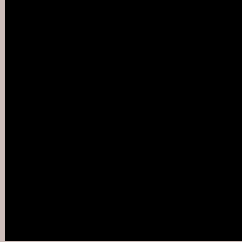
Large Text (above 18pt) WCAG AAA ✓ Pass

Any Text WCAG AAA ✓ Pass

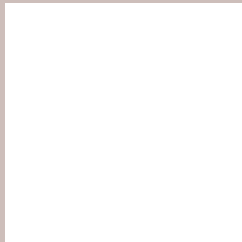
If you want to check with other color combinations, try the [Color Contrast Checker](#).

CIELCh 78, 6.037, 40.395

Background



This preview shows how black text looks on a background with the CIELCh color 78, 6.037, 40.395.



This preview shows how white text looks on a background with the CIELCh color 78, 6.037, 40.395.

Color Blindness Simulation

Color vision deficiency is a very complex topic, and I could not describe the different causes any better than Wikipedia does, so if you want to learn more, you should check out their [article about color blindness](#).

Dichromacy



Original Color

78, 6.037, 40.395

Protanopia

78, 3.468, 69.594

Deuteranopia

78, 10.633, 20.224



Tritanopia
78, 10.915, 332.936

Trichromacy



Original Color
78, 6.037, 40.395

Protanomaly
78, 3.976, 51.942

Deuteranomaly
78, 9.110, 23.425

Tritanomaly
78, 7.946, 347.466

Monochromacy



Original Color
78, 6.037, 40.395

Achromatopsia
78, 0.009, 296.813

Achromatomaly
78, 2.283, 32.853

CSS Examples

Text

The CSS property to change the color of the text to CIELCh 78, 6.037, 40.395 is called "color". The color property can be set on classes, ids or directly on the HTML element.

This example shows how text in the color `rgb(205, 190, 186)` looks like.

```
.text, #text, p{  
    color:rgb(205, 190, 186)  
}
```

If you want to add a text shadow in that color use the text-shadow property, you can generate a text shadow directly with our [CSS Text Shadow Generator](#).

Here you see how black text with a 4 pixel rgb(205, 190, 186) colored shadow looks like.

```
.shadow{ text-shadow: 4px 4px 2px rgb(205, 190, 186) }
```

Border

The CSS property to change the border of an element to CIELCh 78, 6.037, 40.395 is called "border". The border property can be set on classes, ids or directly on the HTML element.

This example shows the color as border, it can be applied via the CSS property "border" or "border-color".

```
.border, #border, table{ border:4px solid rgb(205, 190, 186) }
```

If only the border color should be changed use the property `border-color`.

```
.border{ border-color:rgb(205, 190, 186) }
```

If you want to add a box shadow in that color use:

Here you see how a box with a 4 pixel `rgb(205, 190, 186)` colored shadow looks like.

```
.boxshadow{ -moz-box-shadow:4px 4px 4px  
4px rgb(205, 190, 186); -webkit-box-  
shadow:4px 4px 4px 4px rgb(205, 190, 186);  
box-shadow:4px 4px 4px 4px rgb(205, 190,  
186) }
```

Background

The CSS property to change the background color of an element to CIELCh 78, 6.037, 40.395 is called "background". The background property can be set on classes, ids or directly on the HTML element.

```
.background, #background, body{  
background: rgb(205, 190, 186) }
```

If only the background color should be changed can be used:

```
.background{ background-color: rgb(205,  
190, 186) }
```

This example shows the color as background, it is applied via the CSS property "background".

To optimize and compress your CSS code, you can use our [online CSS compressor and optimizer](#) based on csstidy. If you want to create a linear or radial gradient as background or border, check our [CSS Gradient Generator](#).

Hey! You found this booklet interesting? Support Converting Colors with the new Membership Option!

The pro membership hides all ads, plus gives you double the colors in the color bucket, and more awesome pro features!

[Learn more, Memberships starting at \\$2.50/m!](#)

**Follow me
on Twitter!**

@ConvertingColor